



**IMMEDIATE POSSESSION**



# THE REGENT 1344 SQ.FT.

**113 - 285 Chelsea Court**



2 Bedrooms



3½ Bathrooms



Single Garage

## OPTIONS INCLUDED IN THIS HOME ARE:

- Hardie Board siding exterior
- Entry level flex room with full bathroom
- Moonlight colour palette
- Open concept main floor
- Upgraded semi-built-in kitchen with appliances
- Gas line in kitchen
- Upgraded flush mounted LED lights in great room
- Zebra blinds
- Main floor balcony
- Dual bedrooms with separate ensuites & walk-in closets
- 4-Piece owner's ensuite
- Stacked washer & dryer on upper floor
- A/C rough-ins
- Gas line to deck

## COME VISIT OUR SHOWHOME

**115 & 116 - 285 Chelsea Court, Chestermere, AB**

Call Sam Bibanco today at 825.540.0437 or

email at [chelseacourt@tricohomes.com](mailto:chelseacourt@tricohomes.com)



THE MONARCH



THE REGENT

## SHOWHOME HOURS:

**Mon - Thurs: 2pm - 8pm**

**Fri: Closed**

**Sat - Sun: 12pm - 5pm**

## PLUS RECEIVE YOUR OWN TRICO RED CARD



**& ENJOY INCREDIBLE  
ONGOING SAVINGS &  
REWARDS FROM OUR  
PARTNERS & RETAILERS**



**Chelsea  
Court**  
TOWNHOMES

**Trico  
Homes™**  
The Heart of Homebuilding®

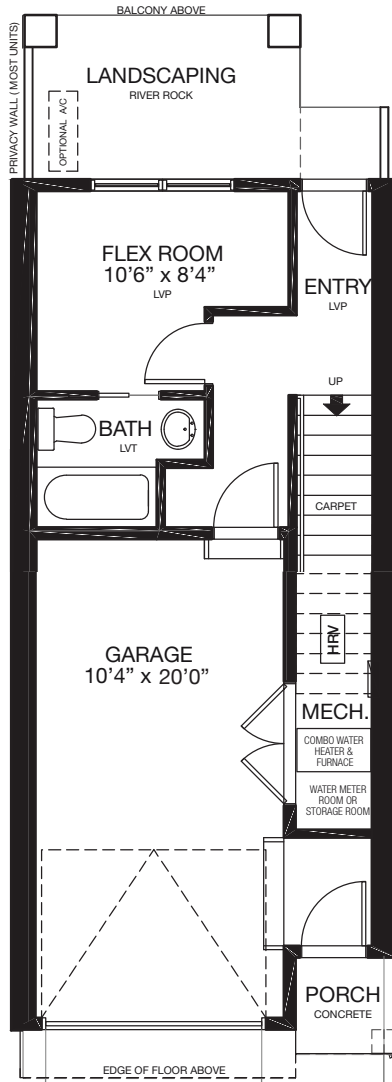


[tricohomes.com](http://tricohomes.com)

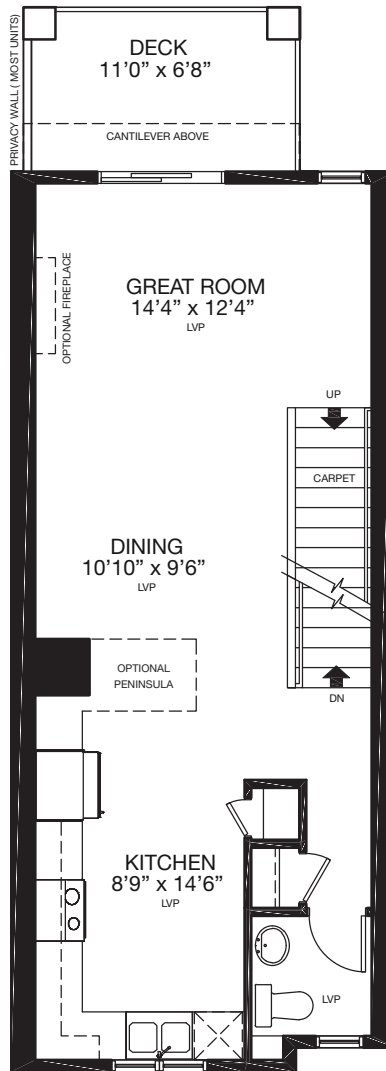


# THE REGENT 1344 SQ.FT.

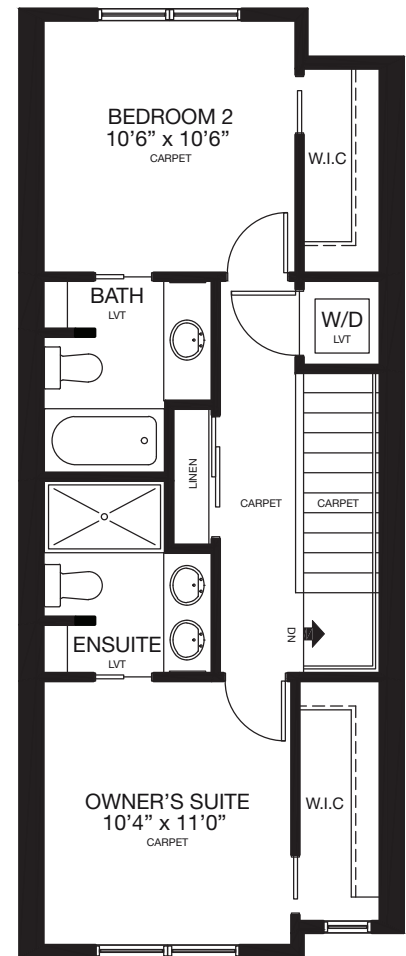
113 - 285 Chelsea Court



**ENTRY**  
203 SQ.FT.



**MAIN**  
559 SQ.FT.



**UPPER**  
582 SQ.FT.



Platinum member  
2004 - 2025



Renderings are artist's conceptions only and may vary by community and lot selection. Prices, floorplans, specifications and dimensions are approximate and are subject to change without notice. E.&O.E. © All rights reserved, including the right if reproduction in the whole or in part without the permission of Trico Homes.

Plan updated September 22, 2025

**Trico  
Homes™**  
The Heart of Homebuilding®



tricohomes.com