






 ← 25' →
 Min. Lot Width

 3 Bedrooms

 2½ Bathrooms

THE
McKENZIE ZLL
 1640 SQ.FT.

Elements Specification

Elite Specification

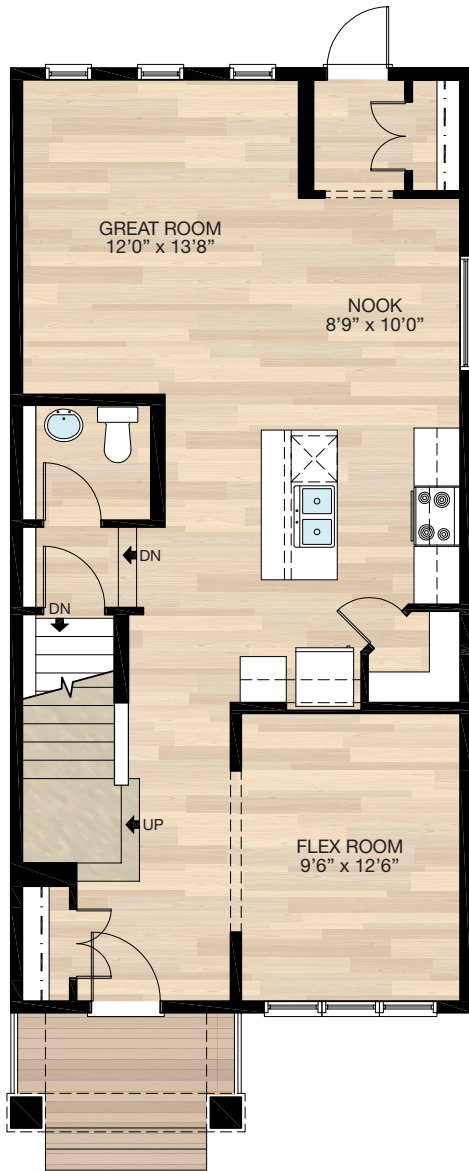


Trico Homes™

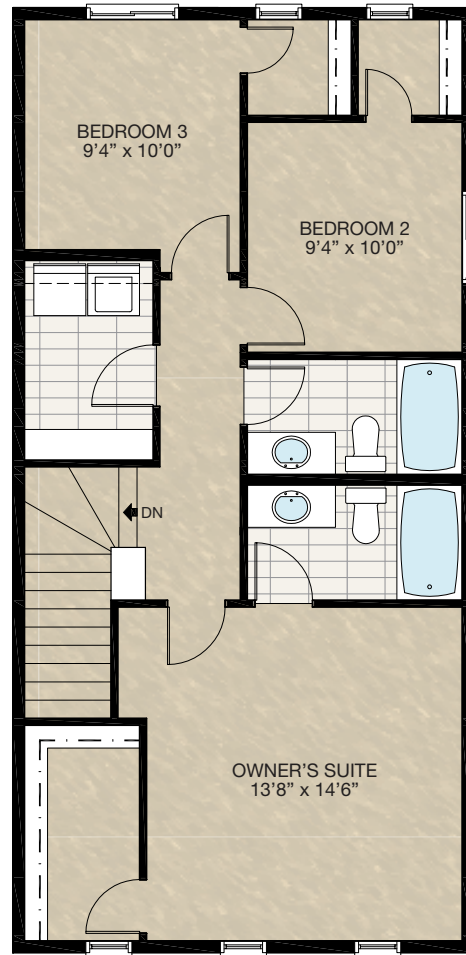
The Heart of Homebuilding®

STANDARD PLAN

THE
McKENZIE
ZLL
1640 SQ.FT.



MAIN
820 SQ.FT.



UPPER
820 SQ.FT.

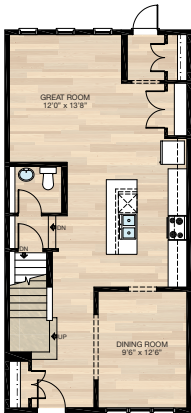
HARDWOOD	DECK	CARPET	CONCRETE	TILE	LAMINATE	LINO
----------	------	--------	----------	------	----------	------

FEATURED OPTIONS



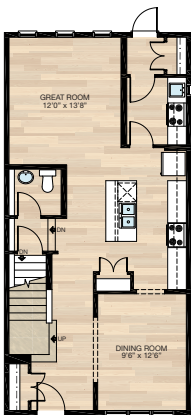
SELECT-1 KITCHEN OPTION

- Delete nook & 60" x 24" P window
- Flex room becomes dining room
- Flex room flooring from carpet to laminate
- Additional 36" of upper & lower cabinetry
- Additional 18" of kitchen island with 2-sided eating bar



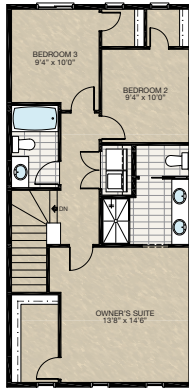
SELECT-2 SPICE KITCHEN OPTION

- Spice kitchen includes
 - 24" Upper & lower cabinetry
 - 33" Lower cabinetry with sink
 - Stove & hoodfan
 - 16" x 30" VSL window
- Delete nook & 60" x 24" P window
- Flex room becomes dining room
- Flex room flooring from carpet to laminate
- Additional 24" upper & lower cabinet to main kitchen
- Rear entry closet reduced to 10" in length



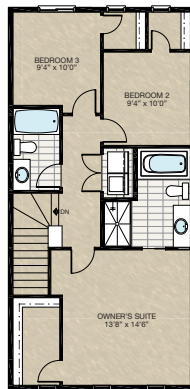
SELECT-3 ENSUITE OPTION 1

- 84" Dual vanity to ensuite
- Water closet with 2'6" pocket door
- Add 24" x 36" VSL window to water closet
- 36" x 60" Acrylic shower base w/tiled walls & 6mm glass
- Laundry closet in lieu of laundry room



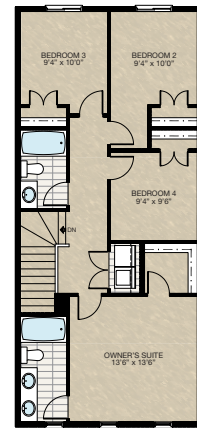
SELECT-4 ENSUITE OPTION 2

- 60" x 32" Soaker tub comes with 4" tile deck
- 36" x 60" Acrylic shower base w/tiled walls & 6mm glass
- Add 48" x 30" HSL window to ensuite
- 54" Vanity to ensuite
- Laundry closet in lieu of laundry room



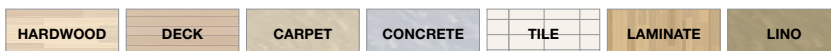
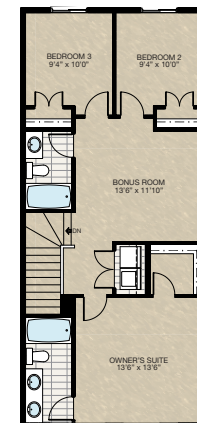
SELECT-5 FOUR BEDROOMS UPPER FLOOR OPTION

- Additional 80 sq.ft. to upper floor (2'0" x 20'0" cantilever to both front & rear of upper floor)
- 70" Dual vanity to ensuite
- 5'8" x 5'4" Walk-in closet to owner's suite
- Laundry closet in lieu of laundry room
- Add 48" x 48" HSL window to Bedroom 2
- Delete two 24" x 48" P windows from rear



SELECT-6 BONUS ROOM OPTION

- Additional 80 sq.ft. to upper floor (2'0" x 20'0" cantilever to both front & rear of upper floor)
- 70" Dual vanity to ensuite
- 5'8" x 5'4" Walk-in closet to owner's suite
- Laundry closet in lieu of laundry room
- Delete two 24" x 48" P windows from rear
- Add 48" x 24" HSL / 24" X 24" P windows to bonus room

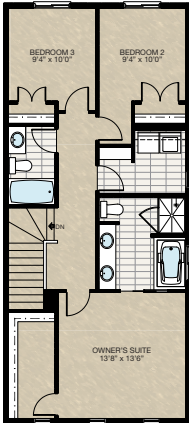


FEATURED OPTIONS

THE
**McKENZIE
ZLL**
1640 SQ.FT.

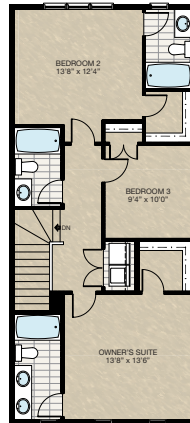
SELECT-7 4-PIECE ENSUITE WITH LAUNDRY ROOM OPTION

- Additional 80 sq.ft. to upper floor (2'0" x 20'0" cantilever to both front & rear of upper floor)
- 84" Dual vanity to ensuite
- 60" x 36" Soaker tub with 4" tile deck to ensuite
- 48" x 36" Fibreglass shower to ensuite
- Add 24" x 36" VSL in laundry room
- 5'0" x 11'4" Walk-in closet to master suite
- Delete two 24" x 48" P windows at rear
- Add 48" x 40" HSL window to ensuite



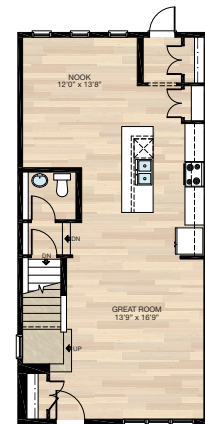
SELECT-8 3-BEDROOMS WITH DUAL OWNER'S SUITES OPTION

- Additional 80 sq.ft. to upper floor (2'0" x 20'0" cantilever to both front & rear of upper floor)
- 70" Dual vanity to ensuite
- 5'8" x 5'4" Walk-in closet to owner's suite
- Laundry closet in lieu of laundry room
- Delete 48" x 48" HSL window from Bedroom 2
- Delete two 24" x 48" P windows at rear
- Add 24" x 48" VSL window to Bedroom 2 bathroom
- Add three 30" x 60" VSL/P/P window to Bedroom 2



SELECT-9 FRONT GREAT ROOM OPTION

- Delete 60" x 24" P window from original nook location
- Additional 36" upper & lower cabinet to kitchen
- Additional 30" of kitchen island with 2-sided eating bar



Trico Homes is a local home builder, with new single and multi-family homes for sale in Calgary, Okotoks, Chestermere, Cochrane, Airdrie and DeWinton. Offering a great selection of starter, move-up, semi-estate and ultra-estate models in numerous communities, you'll find the house that's just right for you! Look for this model and many others in Ambleton, Arbour Lake, Belmont, Carrington, Chelsea, Cornerbrook, D'Arcy, Dawson's Landing, Glacier Ridge, Hamilton Heights, Homestead, Legacy, Midtown, Pine Creek, Precedence, Rivercrest, Seton, Sirocco, Verona West Townhomes, West83 Townhomes and Wolf Willow.



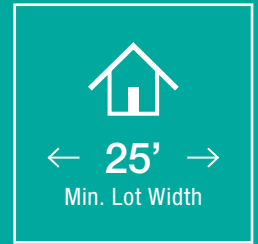
Renderings are artist's conceptions only and may vary by community and lot selection. Prices, floorplans, specifications and dimensions are approximate and are subject to change without notice. E.&O.E. © All rights reserved, including the right if reproduction in the whole or in part without the permission of Trico Homes.

Plan updated as of March 20, 2023.



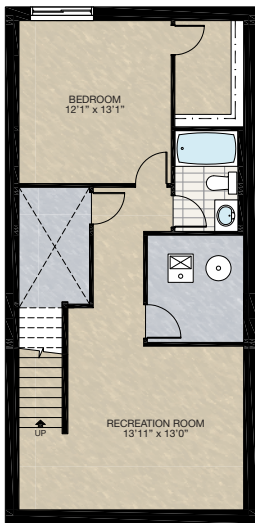
tricohomes.com

FEATURED McKENZIE ZLL OPTIONS



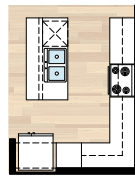
SELECT-10 BASEMENT DEVELOPMENT OPTION

- 577 Sq.Ft. of developed area
- Includes finished basement stairwell
- Delete 2'8" passage door top of stairwell
- Add one riser to stairwell for 9'0" basement ceiling (8'9" headroom clearance)



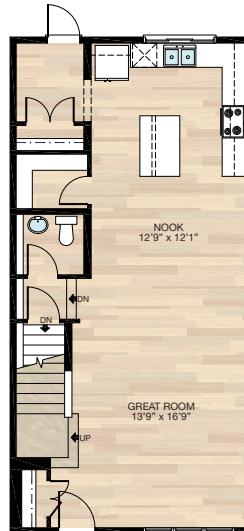
SELECT-11 PANTRY OPTION

- Delete pantry & wire shelving
- Add 24" cabinet pantry
- Add 2' x 6' wall next to fridge for relocating light switch



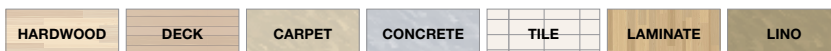
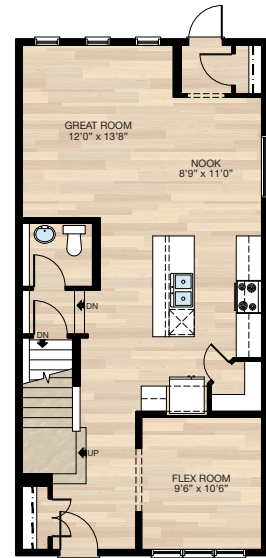
SELECT-13 REAR KITCHEN OPTION

- Deleted three - 24" x 72" (CSMT/P/P) windows to rear
- Add 72" x 48" HSL (3 pane) window to rear
- Relocate rear entry to opposite side
- Window in basement will be required to relocate due to main floor rear entry new location

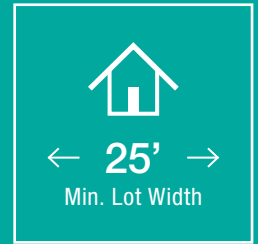


SELECT-12 DEN WITH LARGER KITCHEN OPTION

- Reduced mudroom & closet
- Reduced den 2'0"
- Additional 18" length to kitchen island
- Additional 24" upper & lower cabinetry to kitchen

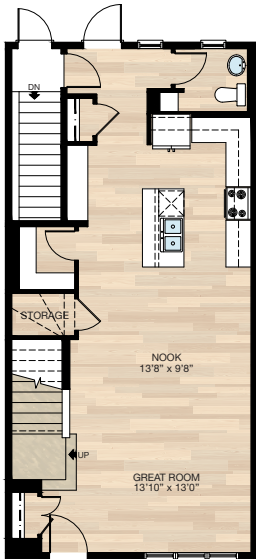


FEATURED McKENZIE ZLL OPTIONS



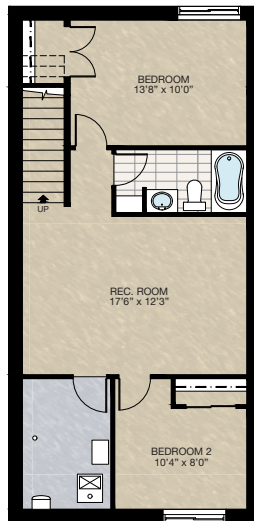
SELECT-14 REAR ENTRANCE OPTION

- Add 2nd set of stairs to basement
- Add 2'8" exterior door to rear
- Delete drop landing
- Relocate half bath to rear & add wire shelving
- Developed area under stair for storage
- Delete 1 rear 24" x 72" P window
- Additional 2'5½" of upper & lower cabinetry & countertop at kitchen
- Kitchen island 6" shorter
- Add MDF desk next to kitchen
- Main floor rear closet door changed from two 1'6" doors to single 2'6" door



SELECT-15 BASEMENT DEVELOPMENT OPTION

- *MUST combine with **SELECT-14 Rear Entrance** option
- 623 Sq.Ft. basement development
- Included finished basement stairwell
- Delete 2'8" passage door top of stairwell
- Add 1 riser to stairwell for 9'0" basement ceiling (8'9" headroom clearance)
- Upgrade rear basement window from 60" x 24" to 60" x 36"
- Add 60" x 36" HSL window to front



SECONDARY SUITE OPTION

- *MUST combine with **SELECT-14 Rear Entrance** option
- 598 Sq.Ft. basement development
- Included finished basement stairwell
- Add 1 riser to stairwell for 9'0" basement ceiling (8'9" headroom clearance)
- Upgrade rear basement window from 60" x 24" to 60" x 36"
- Add 60" x 36" HSL window to front

