  
← 34' →  
Min. Lot Width

-  1 Bedroom
-  1½ Bathrooms
-  Double Garage

# THE WYNWOOD 26'

1227 SQ.FT.

Elements Specification     Elite Specification     Elite Plus Specification

---

---

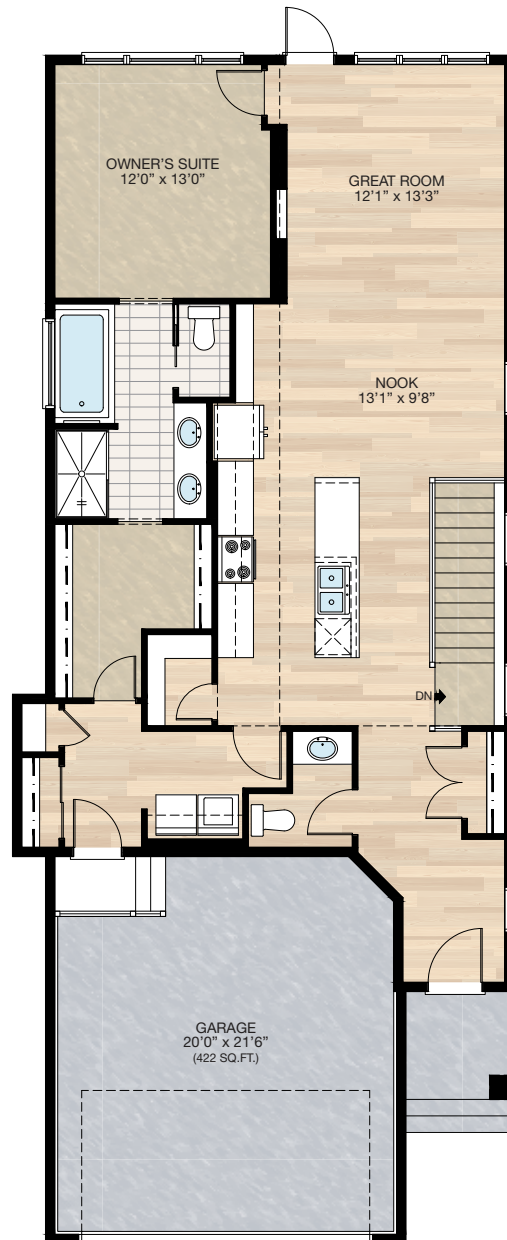
---



Trico Homes™  
The Heart of Homebuilding®

# STANDARD PLAN

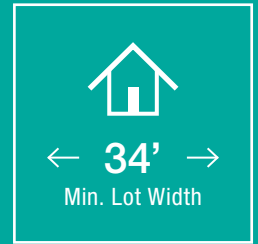
THE  
WYNWOOD  
1227 SQ.FT.



**MAIN**  
1227 SQ.FT.

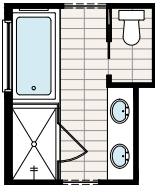


# FEATURED OPTIONS



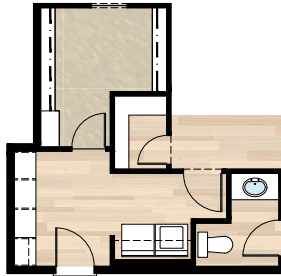
## SELECT-1 ENSUITE OPTION

- \*CANNOT be combined with **SELECT-3** or **4** option
- Delete standard 36" x 60" fiberglass shower
- Add 40" x 60" tiled shower with 10mm glass
- Extend tub tiled ledge by 3.5" next to shower
- Relocate towel bar to opposite side of tub



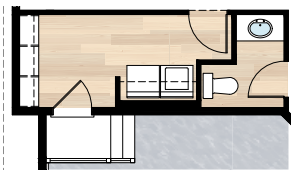
## SELECT-2 MUDROOM MDF LOCKER OPTION

- \*CANNOT be combined with **SELECT-3** or **4** option
- Delete coat closet & linen closet at mudroom
- Add 8'0" locker & coat hooks with MDF backing
- Replace 30" of closet shelving in master walk-in closet with four 30" wide & 16" deep wire shelving for linen



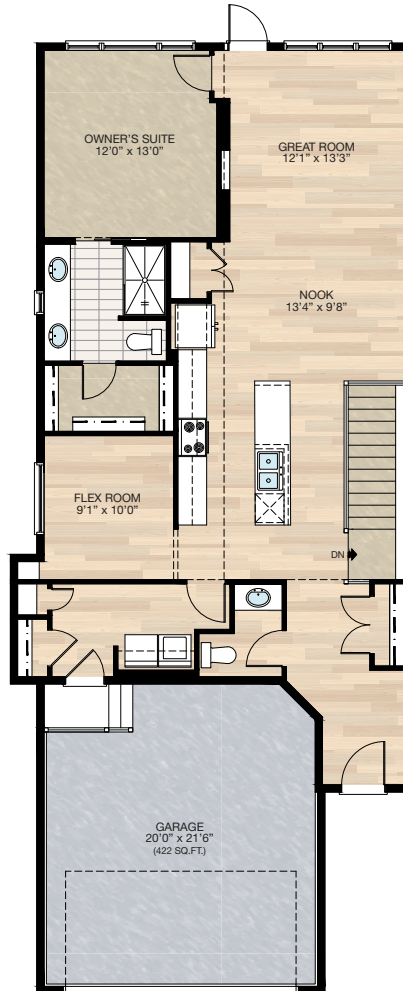
## SELECT-4A MUDROOM LOCKER OPTION

- \*MUST be combined with **SELECT-4** Flex Room option
- Delete coat & linen closet in mudroom
- Add 6'5½" MDF locker & coat hooks with MDF backing behind shelving



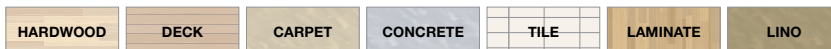
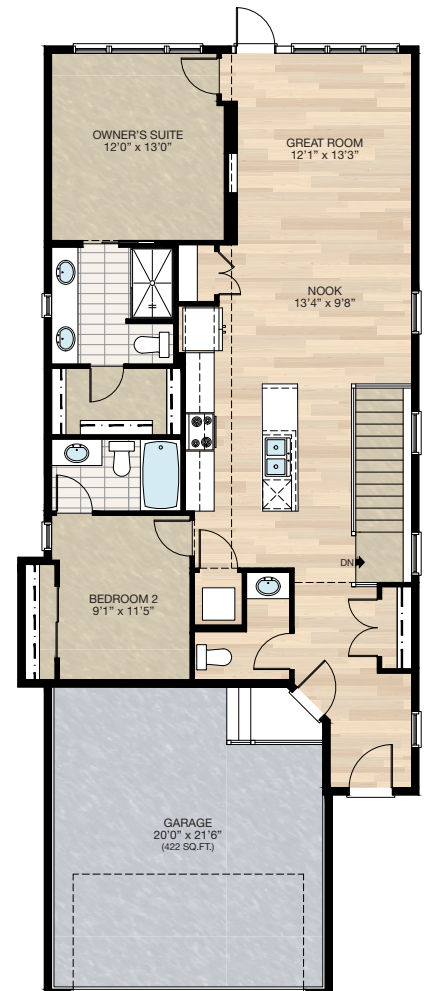
## SELECT-4 FLEX ROOM OPTION

- Delete 72" x 36" soaker tub at ensuite
- Delete 60" x 48" P frosted window at ensuite
- Add 20" x 48" P frosted window at ensuite between two sinks
- Vanity mirror to be two 24" x 42" centered over each sink
- Additional 22" of vanity at ensuite
- Reduced master walk-in closet & add 2'4" door
- Add 60" x 18" P window to flex room
- Delete 66" of the 12" deep cabinetry
- Add 15" cabinetry to main kitchen
- Delete walk-in pantry
- Add pantry closet with light outlet & switch - reduce mudroom closet & change door from 4'0" bi-pass doors to single 2'6" door
- Add four 18" deep MDF shelves to flex room



## SELECT-3 2 BEDROOMS WITH DUAL ENSUITES OPTION

- Delete 72" x 36" soaker tub at ensuite
- Delete 60" x 48" P frosted window at ensuite
- Add 20" x 48" P frosted window at ensuite between two sinks
- Vanity mirror to be two 24" x 42" centered over each sink
- Additional 20" of vanity at ensuite
- Reduced master walk-in closet & add 2'4" door
- Add 2nd bedroom with closet & 3-piece ensuite
- Add 24" x 72" VSL to Bedroom 2
- Delete 66" of 12" deep cabinetry at kitchen
- Delete walk-in pantry
- Add pantry closet
- Reduced kitchen island length by 14"
- Delete mudroom & relocate garage entrance
- Add stackable W/D laundry closet

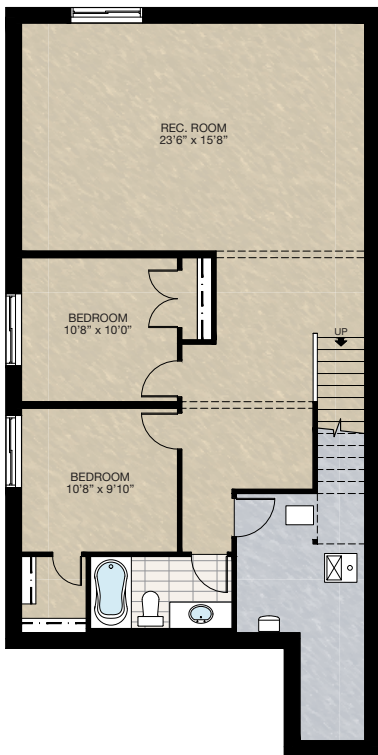


# FEATURED OPTIONS

THE  
**WYNWOOD**  
1227 SQ.FT.

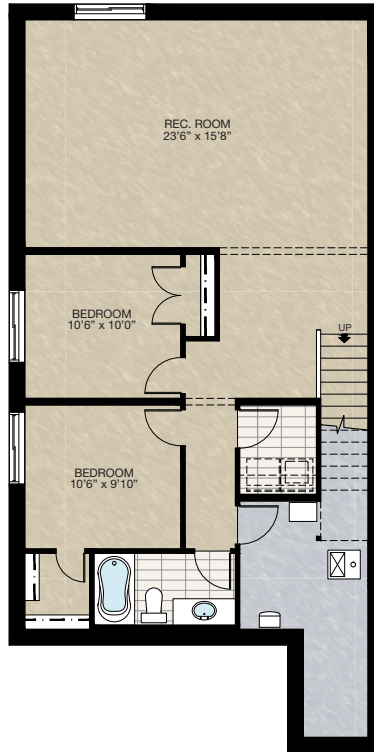
## SELECT-5 BASEMENT DEVELOPMENT OPTION 1

- 929 Sq.Ft. developed area
- Add 1 riser to finished stairwell for 9'0" basement ceiling (8'9" headroom clearance)
- All three basement windows upgraded from 24" High to 36" high
- 42" High stub wall added to stair



## SELECT-6 BASEMENT DEVELOPMENT OPTION 2

- 930 Sq.Ft. developed area
- Add laundry room with washer & dryer rough-in
- Add 1 riser to finished stairwell for 9'0" basement ceiling (8'9" headroom clearance)
- All three basement windows upgraded from 24" High to 36" high
- 42" High stub wall added to stair



Trico Homes is a local home builder, with new single and multi-family homes for sale in Calgary, Okotoks, Chestermere, Cochrane, and Airdrie. Offering a great selection of starter, move-up, semi-estate and ultra-estate models in numerous communities, you'll find the house that's just right for you! Look for this model and many others in Ambleton, Arbour Lake, Belmont, Brooklyn Townhomes, Carrington, Chelsea, Cornerbrook, D'Arcy, Dawson's Landing, Glacier Ridge, Hamilton Heights, Homestead, Legacy, Midtown, Pine Creek, Parallel Bloc Townhomes, Precedence, Precedence Street Towns, Rivercrest, Seton, Sirocco, Verona West Townhomes, West83 Townhomes and Wolf Willow.



Renderings are artist's conceptions only and may vary by community and lot selection. Prices, floorplans, specifications and dimensions are approximate and are subject to change without notice. E.&O.E. © All rights reserved, including the right if reproduction in the whole or in part without the permission of Trico Homes.

Plan updated as of Jan 18, 2023.



tricohomes.com