



FALL POSSESSION



THE REGENT 1179 SQ.FT.

72 - 285 Chelsea Court



2 Bedrooms



2½ Bathrooms



Tandem Garage

OPTIONS INCLUDED IN THIS HOME ARE:

- Minutes away from local amenities, including eco-park, green spaces, schools, plaza & East Hills Shopping Centre
- Hardie Board siding exterior
- Homesite facing main road
- Charcoal standard colour palette
- 9' Knock-down ceilings on entry & main level
- Open concept main floor
- Stainless steel appliances in kitchen
- Quartz countertops
- Zebra blinds
- 11' Wide deck on main level
- Dual bedrooms with separate ensuites & walk-in closets
- 4-Piece owner's ensuite
- A/C rough-ins

COME VISIT OUR SHOWHOME

115 & 116 - 285 Chelsea Court, Chestermere, AB

Call Sam Bibanco today at 825.540.0437 or email at chelseacourt@tricohomes.com



THE MONARCH



THE REGENT

SHOWHOME HOURS:

Mon - Thurs: 2pm - 8pm

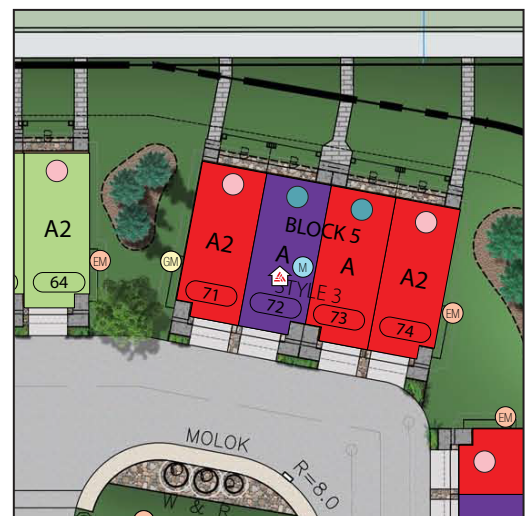
Fri: Closed

Sat - Sun: 12pm - 5pm

PLUS RECEIVE YOUR OWN
TRICO RED CARD



& ENJOY INCREDIBLE
ONGOING SAVINGS &
REWARDS FROM OUR
PARTNERS & RETAILERS



**Chelsea
Court**
TOWNHOMES

**Trico
Homes™**
The Heart of Homebuilding®

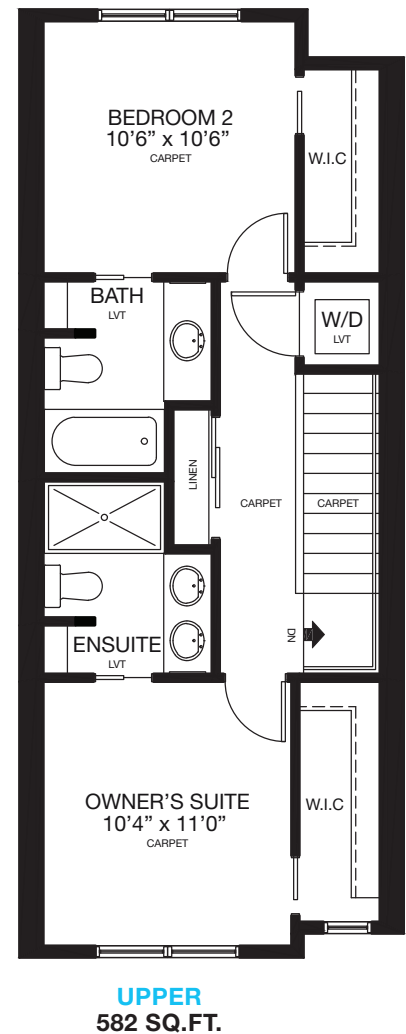
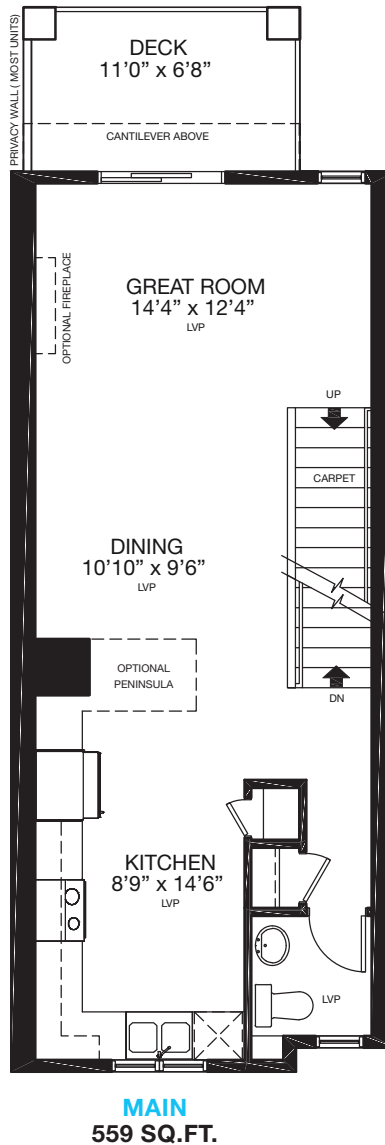
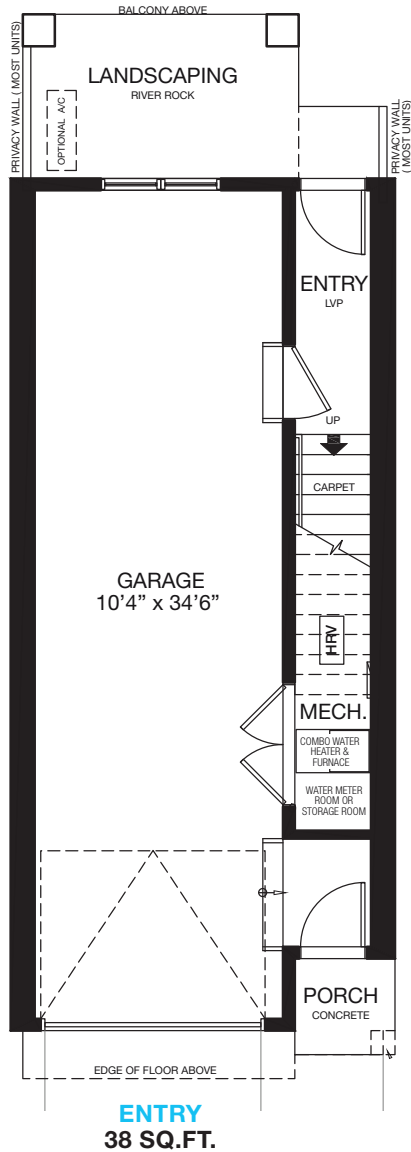


tricohomes.com



THE REGENT 1179 SQ.FT.

72 - 285 Chelsea Court



Renderings are artist's conceptions only and may vary by community and lot selection. Prices, floorplans, specifications and dimensions are approximate and are subject to change without notice. E.&O.E. © All rights reserved, including the right if reproduction in the whole or in part without the permission of Trico Homes.

Plan updated September 22, 2025



tricohomes.com