

# Document Management and Digital Takeoff Using AutoBid Estimating Essentials

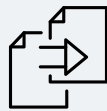


## Streamline Digital Takeoff with Easy-to-Use Document Management Tools

Streamlined takeoff requires a high level of control and productivity and estimators need a complete set of tools with capabilities designed to consistently deliver accurate estimates.

With the AutoBid and Advanced Image Manager (AIM) workflow available in AutoBid Estimating Essentials, estimators save valuable time processing documents for digital takeoff. This workflow also saves time when working through multi-page pdfs, simplifies document selection and streamlines the combination or separation of pdfs into a single file. Now, estimators can easily markup, annotate or edit the resolution of documents prior to takeoff. By using AutoBid and AIM together, estimators are more efficient across the entire estimating process.

## Benefits



### More flexibility in your takeoff

Choose the sheets from a multi-page pdf and combine or separate them as you need.



### More control provides clear, accurate takeoff

Edit file resolution to up to 600 dpi for clear, accurate takeoff.



### Better file organization

Easily organize and rename drawings to separate and combine pdfs to be used within the estimating software.

## Who Benefits?

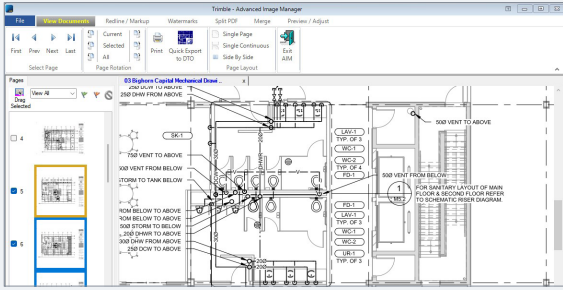
### Estimators

Spend less time processing takeoff files to start estimating faster.

### Project Managers

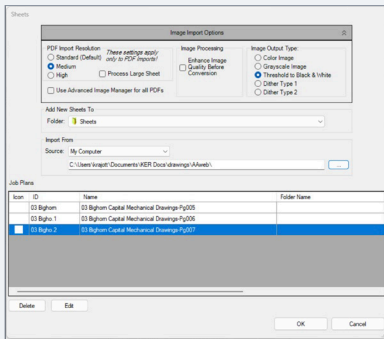
Get work done faster through better file restructuring and pdf organization.

# How does it work?



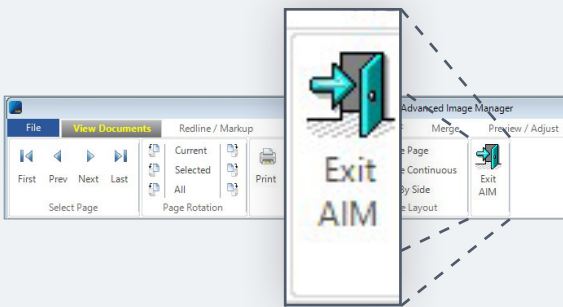
## 1. Open drawing files in AIM and make edits as needed

Use AIM to separate sheets into a PDF, adjust resolution, markup or annotate as needed.



## 2. Save the selected sheets for use in AutoBid Onscreen Takeoff

Save the selected drawings into a single pdf or separate files.



## 3. Open AutoBid Mechanical or SheetMetal

Select the saved drawing files from AIM, set the correct scale and begin takeoff.