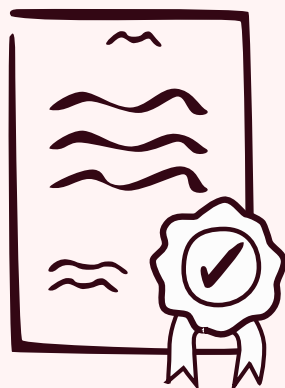


XL Bully Ban: Everything you need to know

What's the legal status?



Ban on XL Bully-type dogs is now in force across the UK



It's illegal to own an XL Bully without an exemption certificate



Selling, breeding, rehoming or abandoning these dogs is banned

If your dog is exempt, you must make sure they are:

- ✓ Registered on the Index of Exempted Dogs
- ✓ Neutered by the correct deadline:
 - If over 12 months old on 31 Jan 2024: by 30 June 2024
 - If 7–12 months old on 31 Jan 2024: by 31 Dec 2024
 - If under 7 months old on 31 Jan 2024: by 30 June 2025
- ✓ Microchipped, muzzled and on a lead in public
- ✓ Covered by third-party insurance
- ✓ Kept in a secure place at home to prevent escape

Rules

Rules vary slightly across England, Wales, Scotland and Northern Ireland. Check the official guidance for where you live.

Worried your dog may be an XL Bully?

Read our guide at www.pethealthclub.com to find out more about the XL Bully ban and to identify your dog's breed type.