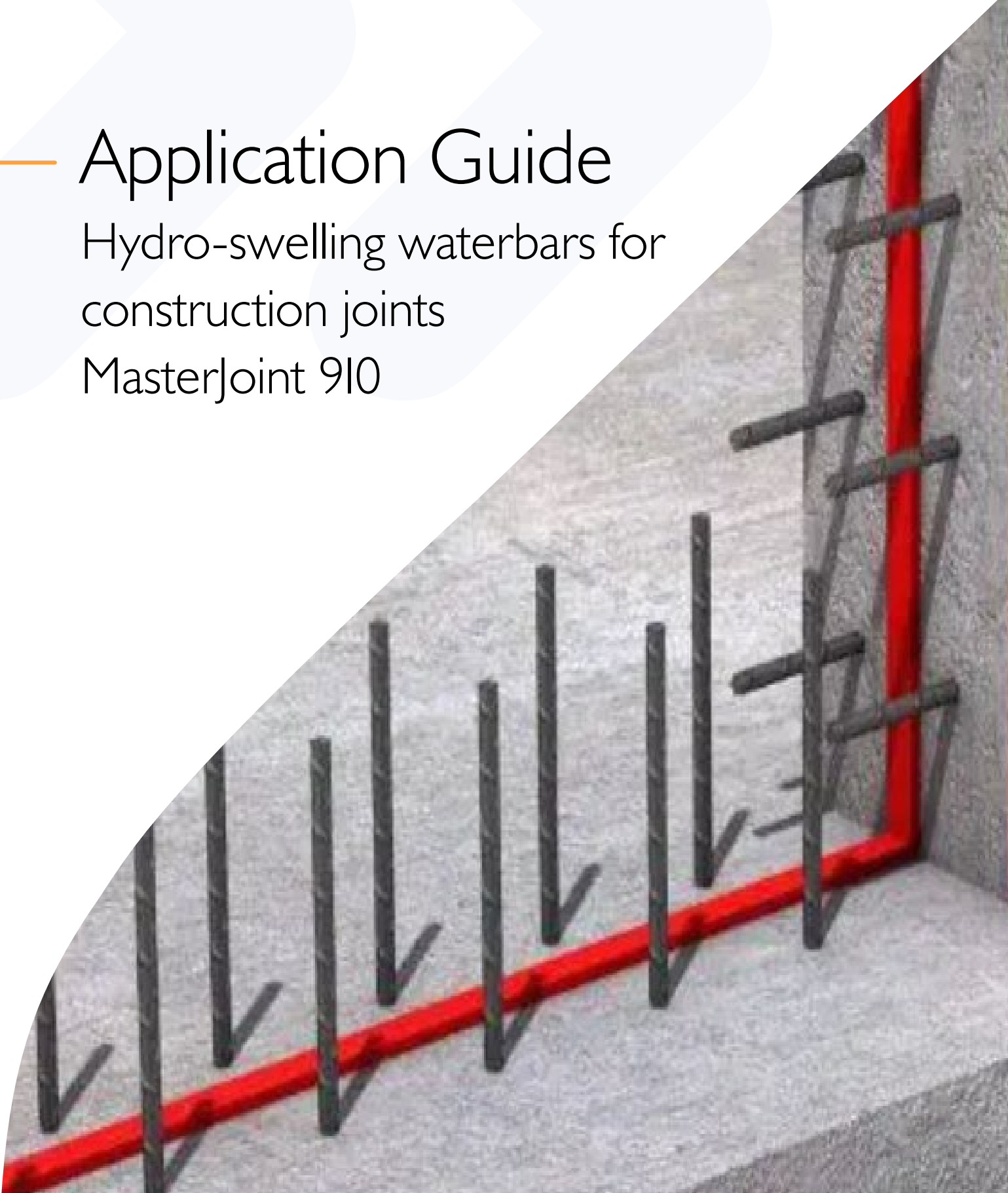


# Application Guide

Hydro-swelling waterbars for  
construction joints

MasterJoint 910



## Table of contents

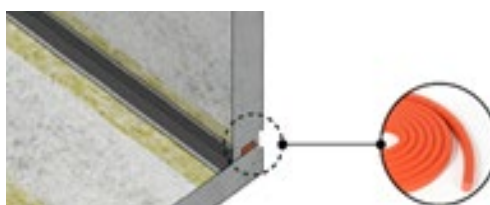
<b>GENERAL.....</b>	<b>2</b>
Product Info.....	2
Application Requirements.....	2
<b>APPLICATION .....</b>	<b>3</b>
Surface Preparation.....	3
Application of the waterbars.....	3
Connecting the waterbars.....	4
<b>OVERVIEW .....</b>	<b>4</b>
Other products application guide.....	5

## GENERAL

This application guide applies to the MB Solutions Australia Ltd Swellable waterstop system, known as MasterJoint 910. This application guide shall be read in conjunction with all project specifications (including drawings), by others, and the current material technical data sheets (TDS) and safety data sheets (SDS).

## Product Info

Renamed Brand	Formerly as	Description	Size
MasterJoint 910	MasterSeal 910	Acrylic Hydro-swelling waterbars for construction joints	20mm x 10mm x 20Lm rolls. 5 x 20Lm rolls in one box



## Application Requirements

**Training:** All work must be conducted by adequately trained and skilled subcontractors under appropriate supervision.

**Safety:** Always ensure the appropriate use of adequate PPE (gloves, goggles, long sleeves etc) and comply with all other safety related requirements when applying Master Builders materials.

**Quality Systems:** The applicator shall operate under a fully compliant quality system, to ensure the on-site quality of applied material. The applicator shall keep fully documented work records for all works undertaken.

**Quality Control:** If after application and/or testing, any applied material is deemed as unsatisfactory by the specifying consulting engineer and/or MB Solutions Australia Ltd, it may need to be rectified at the applicator's cost.

**Weather:** No product application work is to be carried out in temperatures below 5°C or above 35°C, unless special precautions are taken.

**Continuity of Process:** All applications shall be done in continuous operations.

**Useful Sources:** ICRI (International Concrete Repair Institute) Concrete Surface Profile Chips (CSP I-10)- Technical Guideline No. 310.2R-2013

## APPLICATION

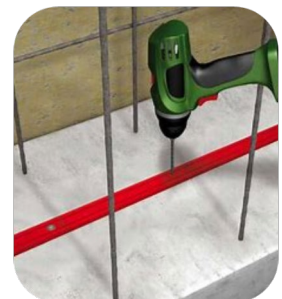
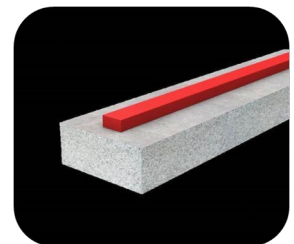
### Surface Preparation

- The substrate must be sustainable, mostly flat and a closed surface texture.
- Joint surfaces should be structurally sound, clean, and free from loose particles and sharp protrusions, oil, grease, or any other contaminant.
- It is essential that it is free from gravel pockets, cavities, gaping cracks, dust and be free from adhesion inhibiting substances.
- Bag up blowholes, especially on vertical surfaces, and carry out any necessary repairs in good time prior to application of adhesive. “Bagging up” should be carried out using a suitable MasterCrete repair mortar or MasterStrength epoxy adhesives.
- To vertical surfaces, all form release agent must be removed prior to applying any adhesive.
- During the application of MasterJoint 910, the substrate may be matt damp, but puddles of water must be avoided.
- Clear any standing water on the surface.

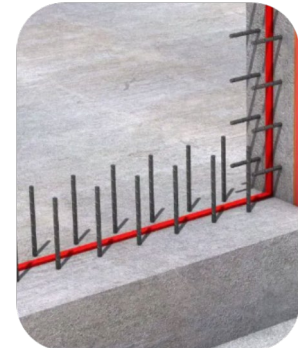


### Application of the Waterbars

- Completely cover the prepared substrate with the mounting adhesive and press the MasterJoint 910 into the adhesive until it emerges out from beneath.
- Lay the MasterJoint 910 preferably along the middle of the slab.
- It is important to leave the minimum coverage from both the edges of concrete to provide sufficient concrete cover to absorb the swelling stresses approximately 30mm from the edge.
- Mechanical fastening at 20cm intervals (min. 5 nails per meter) can be employed as an alternative. Ensure that the MasterJoint 910 makes complete contact with the substrate, avoiding the formation of loops and hollows.
- An expanding joint paste may be used for bonding of MasterJoint 910 on very uneven or rough surfaces.
- The entire length of the MasterJoint 910 must be bonded flat onto the base to prevent any leakage at a later stage.
- The levelling adhesive needs to be in intimate contact with the concrete substrate and the underside of the MasterJoint 910.
- The concrete cover should be at least 80mm thick.



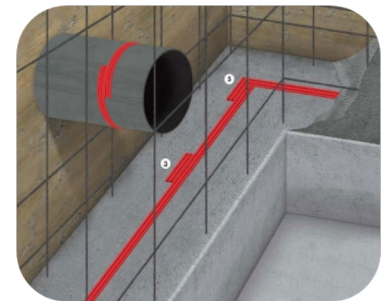
- The MasterJoint 910 should be placed at the centre of walls which are up to 300mm thick and on the water-facing side of the wall for thicker section walls Joints between MasterJoint 910 sections that involve a change or direction (horizontal to vertical or at corners) should be butt jointed.
- After installation, protect MasterJoint 910 and the joint area from dirt, sand, stones, rain, water and other liquids and inspect it visually. Very swollen bar are not suitable and must be removed.
- Earliest after 8 hours beginning to pour the concrete after bonding.



Note: MasterJoint 910 is unsuitable for movement joints.

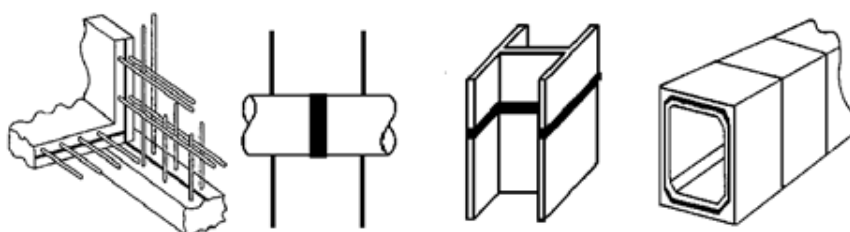
## Connecting the Waterbars

- Do not butt-join run of MasterJoint 910 going in the same direction (e.g. ends of rolls).
- The ends of MasterJoint 910 recommended to lap side-by-side by at least 50mm and not on top of one another.
- On wide joint surfaces (greater than 100 cm), two parallel MasterJoint 910 may be laid for added protection.



## OVERVIEW

- Used for inside waterproofing of construction joints in concrete, which are exposed to permanent or temporary loads to ground water, run-off water and/or surface water.
- The concrete cover should be at least 80mm thick.
- During the application of MasterJoint 910, the substrate may be matt damp, but puddles of water must be avoided.
- Make sure that the tape lies flat and planar on the concrete, without any contamination beneath the bar.
- Before concreting protect the bar from moisture and inspect the bar visually.
- Very swollen bars are not suitable and must be removed.
- Earliest after 8 hours beginning to pour the concrete after bonding.
- MasterSeal 910 is not suitable for movement joints.



## Other products application guide

- MasterCrete: "[Cementitious concrete Repair MasterCrete mortars](#)" application guide
- MasterFill ER/PR: "[Epoxy / PU injection resin](#)" Application Guide
- MasterStrength: "[Epoxy repair mortars](#)" Application Guide
- MasterStrength LAM/FIB/BAR/ANC: "[CFRP structural strengthening](#)" Application Guide
- MasterJoint CHR: "[Joint sealants](#)" Application Guide
- MasterJoint 930: "[FPO tape for joint waterproofing](#)" Application Guide
- MasterFlux: "[Cementitious grouts](#)" Application Guide
- MasterFlux ER: "[Epoxy grouts](#)" Application Guide
- MasterShield AKS: "[Chemical resistant HDPE liner](#)" Application Guide
- MasterShield AC: "[Anti-carbonation coatings](#)" Application Guide
- MasterShield CI: "[Impregnants and corrosion inhibitors](#)" Application Guide
- MasterShield CP: "[Galvanic cathodic protection systems](#)" Application Guide
- MasterShield WR: "[Pre-applied basement waterproofing membrane](#)" Application Guide
- MasterGeo: "[Geotechnical Soil nails and anchors](#)" Application Guide

## Disclaimer

Application Guide MasterJoint 910-ANZ VI-I 124

### STATEMENT OF RESPONSIBILITY

The technical information and application advice given in this MB Solutions Australia Pty Ltd publication are based on the present state of our best scientific and practical knowledge. As the information herein is of a general nature, no assumption can be made as to a product's suitability for a particular use or application and no warranty as to its accuracy, reliability or completeness either expressed or implied is given other than those required by law. The user is responsible for checking the suitability of products for their intended use and for ensuring that the application and use of the product is in accordance with the manufacturer's guidelines and recommendations.

### NOTE

Field service where provided does not constitute supervisory responsibility. Suggestions made by MB Solutions Australia Pty Ltd either orally or in writing may be followed, modified or rejected by the owner, engineer or contractor since they, and not MB Solutions Australia Pty Ltd, are responsible for carrying out procedures appropriate to a specific application.

### MB Solutions Australia Pty Ltd

ABN 69 634 934 419  
Suite 102, 2 Burbank Place  
Norwest NSW 2153

Freecall: 1300 227 300

[www.master-builders-solutions.com/en-au](http://www.master-builders-solutions.com/en-au)

### MB Solutions New Zealand Ltd

45C William Pickering Drive  
Albany, Auckland  
New Zealand

Freecall: +64 9414 7233

### Emergency Advice:

1300 954 583 within Australia (24hr)  
0800 001 607 within New Zealand

