

MasterLife 300D

Crystalline Capillary Waterproofing Admixture

MasterLife 300D is an integral crystalline waterproofing admixture that provides permanent protection against water penetration by reducing capillary absorption within concrete. Designed for above and below grade applications, it enhances long-term durability and is NSF/ANSI Standard 61 certified for use in properly cured concrete structures in contact with potable water.

Product Benefits

- Reduced permeability for enhanced durability
- Minimises water and liquid ingress
- Breathable waterproofing protection
- Self-seals hairline cracks
- Resists positive and negative hydrostatic pressure
- Resistant to sewage and aggressive chemicals



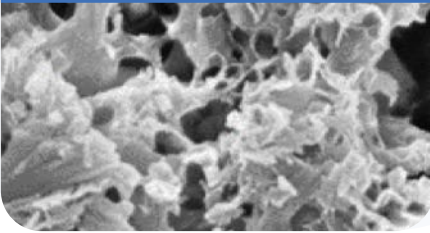
Scan the QR Code
For the Technical Data Sheet



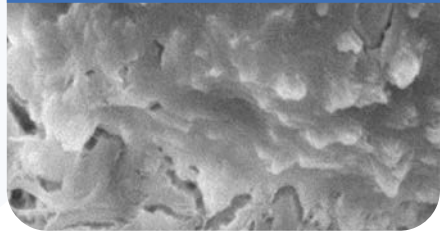
Designed for Long-Term Protection & Durability

MasterLife 300D forms a permanent crystalline barrier within concrete that resists water ingress and self-seals hairline cracks up to 0.4 mm, while allowing the concrete to remain breathable.

Concrete without MasterLife 300D



Densification of Concrete Voids Using MasterLife 300D



Areas of Application:

- Sewage and water treatment plants
- Liquid retaining structures
- Water reservoirs and tanks for potable water
- Swimming pools
- Foundations, basements, lift pits, podiums, balconies and roofs
- Parking structures
- Precast, pre-stressed and post-tensioned concrete
- Culverts
- Blockfill
- Tunnel and subway systems
- Shotcrete
- Concrete subjected to wet, harsh and aggressive environments

