

MasterLife WP 70 System - Application Guidelines

Hydrophilic swellable strips with installation mesh system for waterproofing construction joints

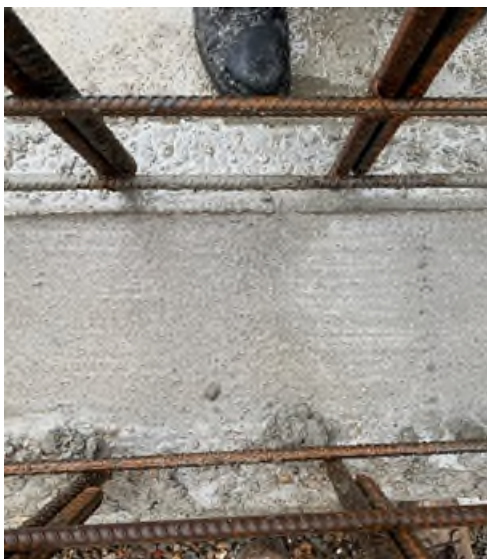
Introduction

This Method Statement describes the application and installation procedure of the MasterLife WP 70 System. The installation should only be carried out by operatives authorised by Master Builders Solutions using the correct application procedures and who can demonstrate a repeatable high standard to the satisfaction of the site supervisors. Master Builders Solutions has the authority to vary the method statement to suit the contract drawings and actual site conditions encountered. This document should be read in conjunction with the appropriate TDS.

System Brief

MasterLife WP 70 Part A is a hydrophilic waterbar which swells when in contact with water. It is fixed in place with MasterLife WP 70 Part B, a steel installation mesh strip. The system is suitable for the permanent sealing of construction joints and pipe/service penetrations in concrete structures.

Substrate Preparation



It is essential for all concrete surfaces to be clean, free of debris and as smooth as reasonably possible. Carefully remove all loose particles and dust by appropriate measures. It is recommended that MasterLife WP 85 (Crystalline Slurry) be brush applied to the substrate with a 1-2mm coat.. This ensures an excellent key for the subsequent concrete pour and stops any water from reaching the steel reinforcement.

- Must be regular and smooth with minimal gaps and voids.
- Free from oil and grease, dust and any loose particles (tie wire).
- Large voids to be filled before application.
- A damp, moist environment is acceptable but ponding water must be avoided.
- Concrete temp above 5°C

MasterLife WP 70 System - Application Guidelines

Hydrophilic swellable strips with installation mesh system for waterproofing construction joints

The MasterLife WP 70 system consists of the following components:

MasterLife WP 70 Part A

Material:

Specially formulated bentonite butyl rubber.

Coverage:

Application requirements can vary according to the total consumption of the project.

Packaging:

Each box contains 6 x 5m strips.

Each strip is 20mm x 25mm.

Field of application:

Main component of a Type B waterbar system.



MasterLife WP 70 Part B

Material:

U-Shaped galvanised steel installation mesh strip.

Coverage:

Application requirements can vary according to the total consumption of the project.

Packaging:

Supplied in a box of 30 x 1m lengths.

Fields of Application:

To secure in place MasterLife WP 70 Part A and fixed with nails.



MasterLife WP 70 System - Application Guidelines

Hydrophilic swellable strips with installation mesh system for waterproofing construction joints

Application Procedure

Once the concrete surface has been prepared according to the guidelines above, the intended route of the MasterLife WP 70 Part A will have to be assessed. This is typically along the centre of the joint in between steel reinforcement with at least 80mm coverage to provide sufficient concrete cover to absorb the swelling stresses. There is no need for scabbling or precast recess to be used. The MasterLife WP 70 Part A must not be applied in wet conditions as this will cause pre-swell which can lead to leaks at the joint.

Apply the Part A waterbar to the substrate and cover with a strip of Part B steel mesh, secure this in place with a nail and washer at no more than 25cm spaces. It is recommended to use a nail gun for this.



MasterLife WP 70 System - Application Guidelines

Hydrophilic swellable strips with installation mesh system for waterproofing construction joints

Corner and Overlap Detailing

Where possible at joints, MasterLife WP 70 should be overlapped by at least 10cm. However, depending on site conditions and access, butt joints are possible, please consult with your technical representative.



Concrete Pouring

Ensure the waterbar is not sat in ponded water for periods of time (hours) and kept dry whenever possible. It is advised to plan ahead to ensure the waterbar can be covered in the event of rainfall. Ideally the waterbar should be placed immediately before the next planned concrete pour. This will help prevent any pre-swell and avoid potential leaks at the construction joint.