



# MasterTop® Epoxy Floors

Colour Chart

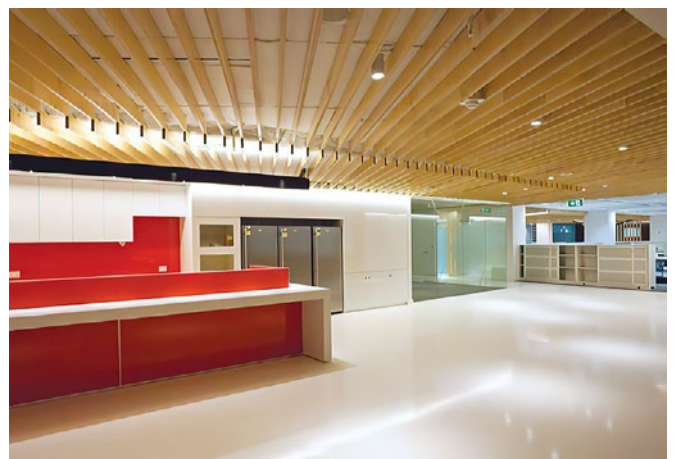


# MasterTop Epoxy Flooring Systems

MasterTop epoxy flooring systems have been protecting and beautifying floors since 1925. From chemical resistant floors to decorative aggregate systems, MasterTop materials offer the diversity and time-tested performance required by today's building owners.

MasterTop resinous flooring systems combine ease of maintenance with the toughness and durability required in challenging commercial, institutional and industrial environments. In addition, MasterTop flooring systems can be installed in a variety of attractive colors, finishes and surface profiles.

All MasterTop flooring systems are available in a variety of textures to provide slip resistance for enhanced safety. The full product line of MasterTop epoxy and polyurethane flooring materials are customized to your specific needs. Create unique systems for your facility that consider available downtime, durability, construction schedules and budgets.





# MasterTop Epoxy Standard Colours



Pewter



Brilliant Blue



Safety Yellow



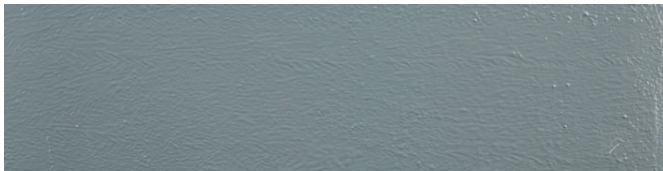
White



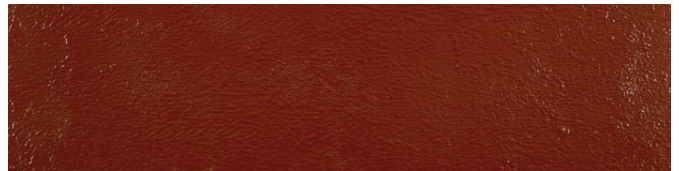
Black



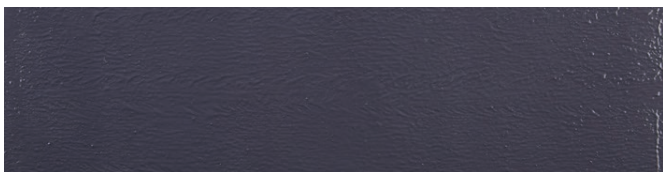
Polished Grey



Silver Grey



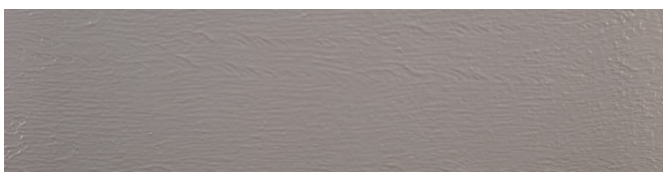
Oxide Red



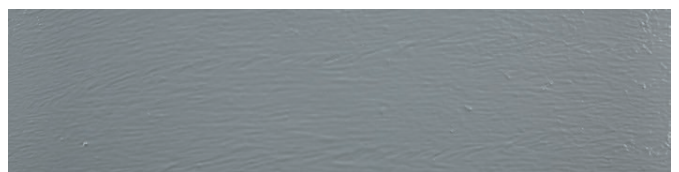
Curtain Call



Pale Green



Koala Grey



Blue Grey

This colour chart is intended as a guide only. Actual colours may vary from those shown due to limitations of the printing process and other environmental factors, including lighting conditions and variances in the condition, type and colour of the surface to which the product is to be applied. No responsibility can be accepted once the products have been applied. It is strongly recommended that a sample is first inspected then a site sample trial applied and approved.



# Master Builders Solutions for the Construction Industry

**MasterAir**

Complete solutions for air entrained concrete

**MasterBrace**

Solutions for concrete strengthening

**MasterCast**

Solutions for the manufactured concrete product industry

**MasterCem**

Solutions for cement manufacture

**MasterEmaco**

Solutions for concrete repair

**MasterFinish**

Solutions for formwork treatment and surface improvement

**MasterFlow**

Solutions for precision grouting

**MasterFiber**

Comprehensive solutions for fiber reinforced concrete

**MasterGlenium**

Solutions for hyperplasticized concrete

**MasterInject**

Solutions for concrete injection

**MasterKure**

Solutions for concrete curing

**MasterLife**

Solutions for enhanced durability

**MasterMatrix**

Advanced rheology control solutions for self-consolidating concrete

**MasterPel**

Solutions for water tight concrete

**MasterPolyheed**

Solutions for high performance concrete

**MasterPozzolith**

Solutions for water-reduced concrete

**MasterProtect**

Solutions for concrete protection

**MasterRheobuild**

Solutions for superplasticized

**MasterSeal**

Solutions for waterproofing and sealing

**MasterRoc**

Solutions for underground construction

**MasterSet**

Solutions for retardation control

**MasterSure**

Solutions for workability control

**MasterTop**

Solutions for industrial and commercial floors

**Master X-Seed**

Advanced accelerator solutions for pre-cast concrete

**Ucrete**

Flooring solutions for harsh environments

## Australia

1300 227 300

[www.master-builders-solutions.com/en-au](http://www.master-builders-solutions.com/en-au)

## New Zealand

0800 334 877

The technical information and application advice given in this MB Solutions Australia Pty Ltd publication are based on the present state of our best scientific and practical knowledge. As the information herein is of a general nature, no assumption can be made as to a product's suitability for a particular use or application and no warranty as to its accuracy, reliability or completeness either expressed or implied is given other than those required by law. The user is responsible for checking the suitability of products for their intended use and for ensuring that the application and use of the product is in accordance with the manufacturer's guidelines and recommendations. For detailed information on the product and application refer to the Technical Data Sheet and Application Guide available in our website: [www.master-builders-solutions.com/en-au](http://www.master-builders-solutions.com/en-au)

® = registered trademark