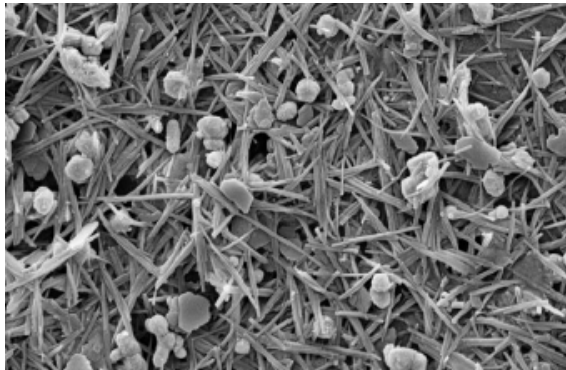


# MasterMatrix 220

Rheology modifying additive for concrete and shotcrete

## Material Description

**MasterMatrix 220** is an innovative additive that modifies rheology in a wide variety of concrete products and cement based applications. **MasterMatrix 220** is an ultra-fine mineral based powder containing bundles of sub-micron particles. When well dispersed in wet cementitious materials, the particles interact to form a network that entraps liquid and smaller cementitious particles and keeps larger particles suspended as shown below.



MasterMatrix 220 meets AS 1478.1 - 2000 Type SN and chloride free.

## Areas of Application

**MasterMatrix 220** is recommended for use in a variety of applications requiring rheology modification and control such as:

- Tremie concrete for piles & diaphragm walls
- Super Workable Concrete & Self Compacting Concrete
- Shotcrete
- Precast concrete
- Manufactured concrete products (blocks, pavers & retaining walls)
- Underwater concrete
- Mortar and grouts
- Geopolymer concrete

## Characteristics and Benefits

- Reduces potential for segregation
- Improves paste quality, cohesion & rheology
- Imparts some anti-washout properties
- Improves pumpability of concrete & grouts
- Reduces shotcrete rebound
- Improves surface consolidation & finish

**MasterMatrix 220** may affect water content, target slump and admixture dosage, depending upon temperature and their proportions. Lab and field trials should be conducted to achieve desired performance.

## Properties

Measurement Example

Aspect	Grey-creamish**
Specific Gravity	2.4
pH (Deionised Water)	9.8
Chloride Content	No added chlorides

\*\* Color may vary slightly. However, this does not change the efficacy and product performance

## Dosage

The standard recommended dosage range of **MasterMatrix 220** is typically between 0.5 - 1.5 kg per m<sup>3</sup>, but can be increased or reduced depending on the specific application. The optimum dosage rate in such instances should be determined by correctly conducting trials using materials and conditions of use under the supervision of a Master Builders Solutions Technical Sales Representative.

## Compatibility

**MasterMatrix 220** is compatible with all Master Builders Solutions water reducers, mid-range water reducers, high range water reducers, set retarders, accelerators and slump retainers.

# MasterMatrix 220

Rheology modifying additive for concrete and shotcrete

## Packaging

MasterMatrix 220 is packaged in 1.5 kg water soluble bags (12 in a box). Can be supplied in bulk bags – contact your local Master Builder Solutions Technical Sales Representative.

## Storage & Shelf Life

MasterMatrix 220 has a shelf life of approximately 12 months when stored in a cool dry environment.

## Precautions

For the full health and safety hazard information and how to safely handle and use this product, make sure that you obtain a copy of the Safety Data Sheet (SDS) from our office or website.

## Disclaimer

MasterMatrix-220-ANZ-V5-0723

### STATEMENT OF RESPONSIBILITY

The technical information and application advice given in this MB Solutions Australia Pty Ltd publication are based on the present state of our best scientific and practical knowledge. As the information herein is of a general nature, no assumption can be made as to a product's suitability for a particular use or application and no warranty as to its accuracy, reliability or completeness either expressed or implied is given other than those required by law. The user is responsible for checking the suitability of products for their intended use and for ensuring that the application and use of the product is in accordance with the manufacturer's guidelines and recommendations.

### NOTE

Field service where provided does not constitute supervisory responsibility. Suggestions made by MB Solutions Australia Pty Ltd either orally or in writing may be followed, modified or rejected by the owner, engineer or contractor since they, and not MB Solutions Australia Pty Ltd, are responsible for carrying out procedures appropriate to a specific application.

### MB Solutions Australia Pty Ltd

ABN 69 634 934 419  
 Unit 102, 2 Burbank Place  
 Norwest NSW 2153

Freecall: 1300 227 300

[www.master-builders-solutions.com/en-au](http://www.master-builders-solutions.com/en-au)

### MB Solutions New Zealand Ltd

45C William Pickering Drive  
 Albany, Auckland  
 New Zealand

Phone: +64 9 414 7233

### Emergency Advice:

1300 954 583 within Australia (24hr)  
 0800 001 607 within New Zealand