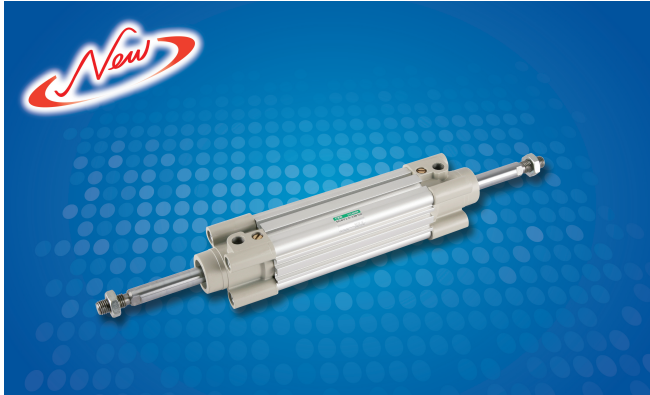


Double acting/ double rod cylinder SCW*2-D Series



Main Features

- Conforming to ISO15552 standard
- Switches can be optionally mounted

Specifications

Description	SCW*2-D						
	Bore size	mm	φ 32	φ 40	φ 50	φ 63	φ 80
Working fluid	Clean compressed air						
Max. working pressure	MPa	1.0					
Min. working pressure	MPa	0.1					
Withstanding pressure	MPa	1.5					
Ambient temperature	°C	-10 to 60 (No freezing)					
Stroke tolerance	mm	0 to 1.4					
Working piston speed	mm/s	50 to 1000					
Cushion	Air cushion						
Effective cushion length	mm	15	15	16.4	16.4	23.4	23.4
Lubrication	No						
Allowable absorption energy with cushion	J	2.5	6.0	9.0	14.4	25.4	45.6

Stroke length

Bore size (mm)	Standard stroke length (mm)	Max. stroke length (mm)	Available stroke length (mm)	Min. stroke length (mm)
φ 32	25,50,80,100, 125,160,200, 250,320,400, 500,600,700, 800	500	800 ^{Note}	1
φ 40		500		
φ 50		600		
φ 63		600		
φ 80		800		
φ 100		800		

Note: If the max. stroke length is exceeded, product specifications may not be met, depending on operating conditions. Contact CKD in this case.

Consumable parts list

S/N	Bore size	Kit number
1	φ 32	SCWP2-D-32K
2	φ 40	SCWP2-D-40K
3	φ 50	SCWP2-D-50K
4	φ 63	SCWP2-D-63K
5	φ 80	SCWP2-D-80K
6	φ 100	SCWP2-D-100K

Note: applicable to both SCWP2-D and SCWT2-D.

Cylinder mass

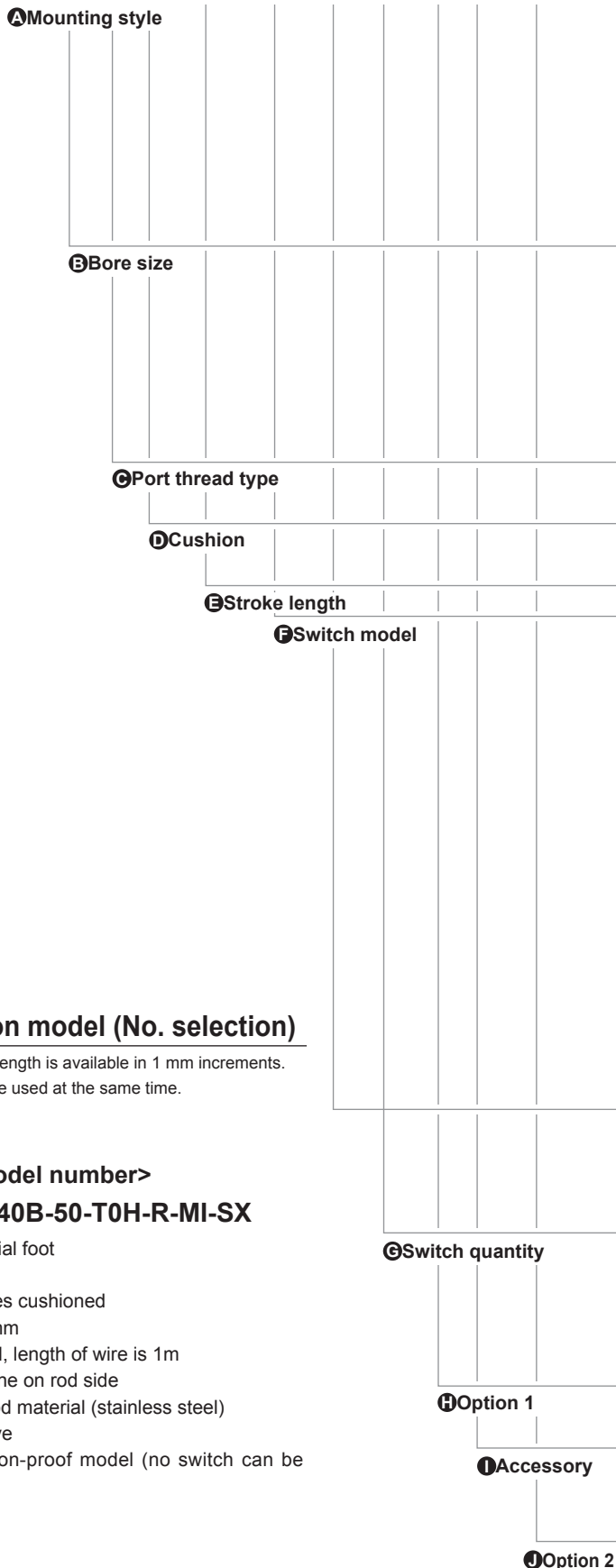
(Unit: kg)

Bore size (mm)	Product mass when stroke length(s)=0(mm)				Additional mass per S=50(mm)	Mass per TOH switch	Mass of switch mounting parts (T-shaped)	Accessory mass	
	Basic (00)	Foot (LB)	Flange (FA, FB)	Trunnion (TA, TB, TC)				I	Y
SCWP2-D- φ 32	0.64	0.75	0.98	—	0.20	0.018	—	0.07	0.10
φ 40	0.96	1.10	1.48	—	0.28		—	0.07	0.13
φ 50	1.64	1.80	2.16	—	0.41		—	0.20	0.30
φ 63	2.06	2.40	3.02	—	0.42		—	0.20	0.30
φ 80	3.09	3.52	4.98	—	0.74		—	0.52	0.94
φ 100	4.52	5.38	5.92	—	0.74		—	0.48	0.92
SCWT2-D- φ 32	0.61	0.72	0.95	0.91	0.13		0.024	0.07	0.10
φ 40	0.91	1.05	1.43	1.37	0.21		0.024	0.07	0.13
φ 50	1.55	1.71	2.07	2.20	0.30		0.022	0.20	0.30
φ 63	1.93	2.27	2.89	3.04	0.32		0.020	0.20	0.30
φ 80	2.78	3.21	4.67	5.03	0.58		0.026	0.52	0.94
φ 100	4.20	5.06	5.44	7.96	0.55		0.024	0.48	0.92

SCW*2-D Series

How to order

SCWP2-D - LB - 40 - B - 50 - T0H - R - M I - SX
 SCWT2-D



A Mounting style				
00	ISO type	Basic		
LB	MS1	Axial foot		
FA	MF1	Rod side flange		
FB	MF2	Head side flange		
TC	MT4	Intermediate trunnion (SCWT2-D only)		
TA		Rod side trunnion (SCWT2-D only)		
TB		Head side trunnion (SCWT2-D only)		
B Bore size (mm)				
32	φ 32			
40	φ 40			
50	φ 50			
63	φ 63			
80	φ 80			
100	φ 100			
C Port thread type				
Blank	Straight port thread			
D Cushion				
B	Both sides cushion (basic)			
E Stroke length (mm) (details in stroke length specification on the previous page)				
F Switch model				
Lead write Straight type	Lead write L-type	Contact	Display	Lead wire
T0H *	T0V *	Reed	1-color indicator	2-wire
T5H *	T5V *		Without indicator	
T8H *	T8V *		1-color indicator	
T1H *	T1V *	Proximity	1-color indicator	2-wire
T2H *	T2V *			2-wire
T3H *	T3V *		2-color indicator	
T2WH*	T2WV*			2-wire
T2YH*	T2YV*		3-wire	
T3WH*	T3WV*			1-color indicator
T3YH*	T3YV*		2-wire	
T3PH *	T3PV *			Switch for strong magnetic field
T2YD*	—		Off-delay	
T2YDT*	—			
T2JH*	T2JV*			
*Lead wire length				
Blank	1 m (standard)			
3	3 m (option)			
5	5 m (option)			
G Switch quantity				
R	One on rod side			
H	One on head side			
D	Two			
T	Three			
H Option 1				
M	Piston rod material (stainless steel)			
I Accessory				
I	ISO8139	Rod eye		
Y	ISO8140	Rod clevis (with shaft pin and cotter pin)		
J Option 2				
Blank	Standard cylinder			
SX	Explosion-proof model (no switch can be mounted)			

⚠ Cautions on model (No. selection)

- * 1: The custom stroke length is available in 1 mm increments.
- * 2: "I" and "Y" cannot be used at the same time.

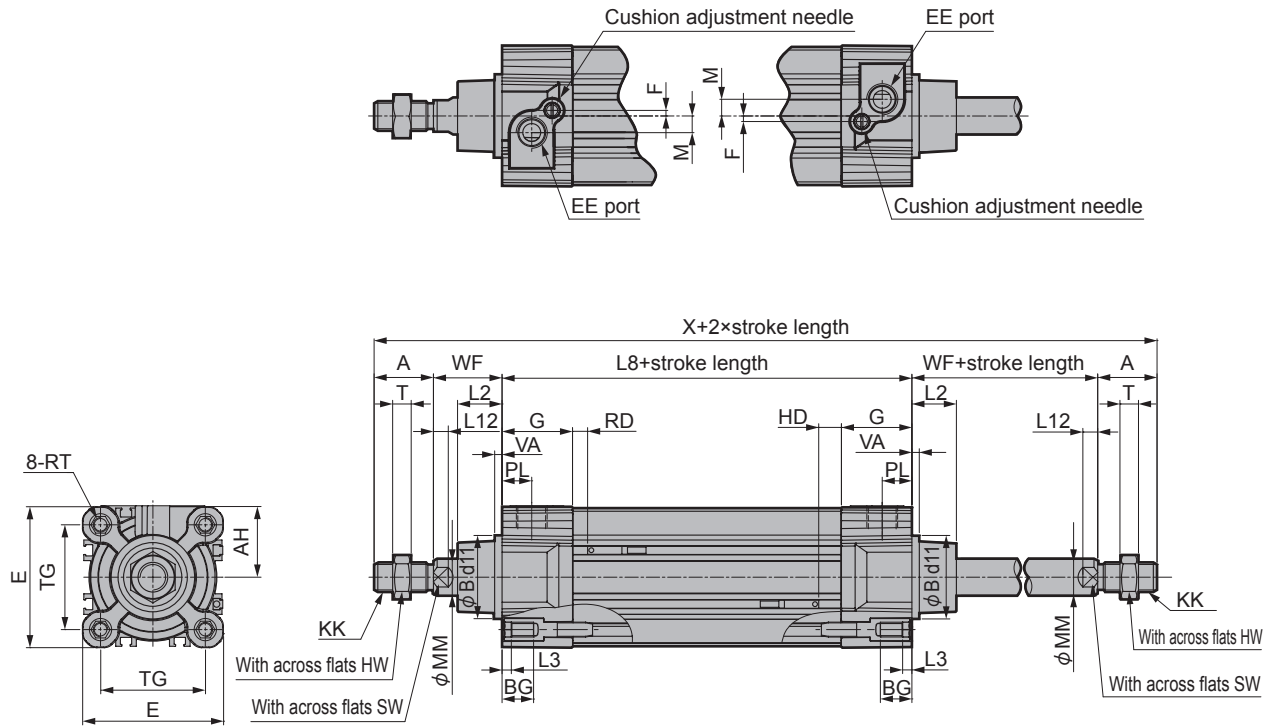
<Example of model number>

SCWT2-D-LB-40B-50-T0H-R-MI-SX

- A Mounting style: Axial foot
- B Bore size: φ 40
- D Cushion: Both sides cushioned
- E Stroke length: 50mm
- F Switch model: T0H, length of wire is 1m
- G Switch quantity: One on rod side
- H Option 1: Piston rod material (stainless steel)
- I Accessory: Rod eye
- J Option 2: Explosion-proof model (no switch can be mounted)

Dimensions

- SCWP2-D
Basic (00)



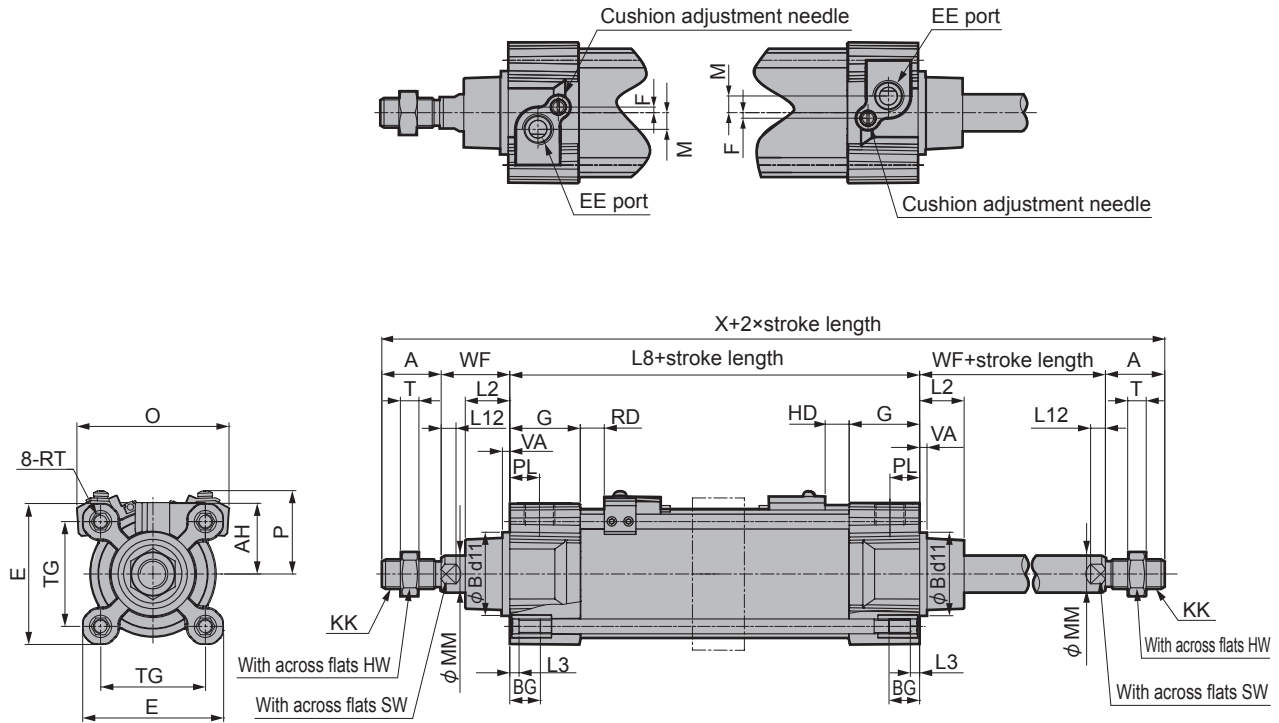
(Unit: mm)

Code	Basic (00) basic dimensions																			
Bore size	A	B	BG	E	AH	EE	F	G	HW	KK	L2	L3	L8	L12	M	MM	SW	PL	RT	T
φ 32	22	30	16	47.5	24.3	G1/8	-6.7	33	17	M10×1.25	15	5	94	6	4.9	12	10	13	M6	6
φ 40	24	35	16	53	27	G1/4	-10	35.8	18	M12×1.25	17	5	105	8	5.5	16	13	14	M6	6
φ 50	32	40	16	65	33	G1/4	0.6	37	24	M16×1.5	24	5	106	8	7	20	17	14	M8	10
φ 63	32	45	16	76	38.5	G3/8	3	38.3	24	M16×1.5	24	5	121	8	9	20	17	16	M8	10
φ 80	40	45	21	95	48	G3/8	0	40	30	M20×1.5	30	6	128	11	12	25	22	16	M10	12
φ 100	40	55	21	114	57.5	G1/2	4.5	43.2	30	M20×1.5	33	6	138	11	12	25	22	18	M10	12
Code	With switch																			
	T0, T5, T2, T3				T2W, T3W															
Bore size	TG	VA	WF	X	RD	HD	RD	HD												
φ 32	32.5	4	26	190	4.5	4.5	7	7												
φ 40	38	4	30	213	4.5	9.5	7	12												
φ 50	46.5	4	37	244	5.5	7.5	8	9.5												
φ 63	56.5	4	37	259	10	15.5	12.5	17.5												
φ 80	72	4	46	300	14.5	14.5	17	17												
φ 100	89	4	51	320	16.5	16.5	18.5	18.5												

SCWT2-D Series

Dimensions

- SCWT2-D
Basic (00)



(Unit: mm)

Code	Basic (00) basic dimensions																			
Bore size	A	B	BG	E	AH	EE	F	G	HW	KK	L2	L3	L8	L12	M	MM	SW	PL	RT	T
φ32	22	30	16	47.5	24.3	G1/8	-6.7	33	17	M10×1.25	15	5	94	6	4.9	12	10	13	M6	6
φ40	24	35	16	53	27	G1/4	-10	35.8	18	M12×1.25	17	5	105	8	5.5	16	13	14	M6	6
φ50	32	40	16	65	33	G1/4	0.6	37	24	M16×1.5	24	5	106	8	7	20	17	14	M8	10
φ63	32	45	16	76	38.5	G3/8	3	38.3	24	M16×1.5	24	5	121	8	9	20	17	16	M8	10
φ80	40	45	21	95	48	G3/8	0	40	30	M20×1.5	30	6	128	11	12	25	22	16	M10	12
φ100	40	55	21	114	57.5	G1/2	4.5	43.2	30	M20×1.5	33	6	138	11	12	25	22	18	M10	12

Code	With switch									
	T0, T5, T2, T3					T2W, T3W				
Bore size	TG	VA	WF	X	O	P	RD	HD	RD	HD
φ32	32.5	4	26	190	58	38	4.5	4.5	7	7
φ40	38	4	30	213	64	40	4.5	9.5	7	12
φ50	46.5	4	37	244	72	42	5.5	7.5	8	9.5
φ63	56.5	4	37	259	83	46	10	15.5	12.5	17.5
φ80	72	4	46	300	103	56	14.5	14.5	17	17
φ100	89	4	51	320	120	63	16.5	16.5	18.5	18.5

Note: Middle swing bracket (shown by dotted line) is added according to stroke. Refer to Page 10 of C-CC-1362C□ for the size.

If the goods and/or their replicas, the technology and/or software found in this catalog are to be exported from Japan, Japanese laws require that the exporter makes sure that they will never be used for the development and/or manufacture of weapons for mass destruction.

CKD (China) Corporation

Headquarters

Address: No.21 Xinhua Road, New District, Wuxi, Jiangsu Province China 214028

<Website>

Tel: +86(0510)85345300 Fax: +86(0510)85345310

<http://www.ckd.com.cn/>

● CKD maintains a policy of ongoing product development and improvement.

We therefore reserve the right to change dimensions, specifications and design without notice.

© CKD Corporation 2019 All copy rights reserved.

© Published by CKD (China) Corporation 2019

2019.5.ACNBC