

Flow Indicator WFI Series



Introduction

This product can be used to control and indicate the direction of the fluid. It can widely be applied to the field of "one-way fluid control system".

Its advantages of simple internal structure, easy to be installed, convenient to be observed makes it pop!

Main point

- The direction of the fluid can be indicated.
- Fluid can be prevented from flowing reversely.
- Indicator doesn't need to contact the fluid directly.

JIS

Symbol



Characteristics

Cleared window, Easy to confirm

The crystal cleared 3D observation room makes it possible to confirm the flow direction in any visual angle.

Waste resistance

The indicator is separated from the fluid. They will not interfere with each other.

Visual confirm water flow condition

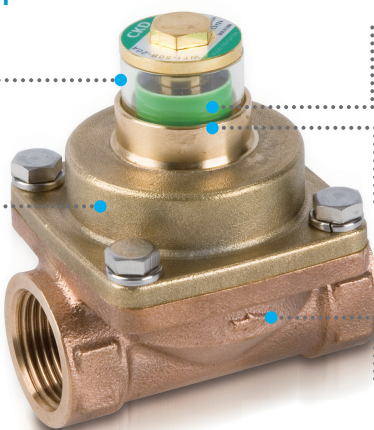
The flow direction can be observed from long distance due to indicator's bright colour.

High sensitivity, Easy to observe

The indicator is super sensitive. Obvious indication can easily be detected with tiny amount of fluid flowing by.

Standard built-in non-return valve

The flow direction can be controlled to prevent the adverse current of fluid caused by unpredictable situations.



Application

- The water-cooling system of auto-welding machine for vehicle industry.
- The water cooling system of welding equipment for electronics factories.
- The sprinkler system for fire fighting.

Related products

Water flow sensor WFK series



Flow range :

WFK5008 1.0 ~ 8.0 L/min (Rc3/8, Rc1/2, Rc3/4)

WFK7050 10 ~ 50 L/min (Rc3/4, Rc1)

WFK7100 20 ~ 100 L/min (Rc1, Rc1 1/4)

WFK7200 40 ~ 200 L/min (Rc1 1/4, Rc1 1/2)

Electrostatic capacitance electromagnetic flow sensor WFC series



Flow range :

WFC-150 0.5 ~ 15 L/min (Rc3/8, G3/8, 3/8NPT)

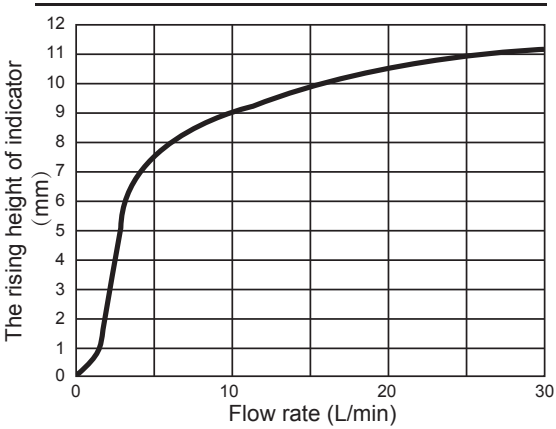
WFC-600 2.0 ~ 60 L/min (Rc1/2, G1/2, 1/2NPT)

(Rc3/4, G3/4, 3/4NPT)

Specifications

Descriptions		Content
Fluid		Water
Proof pressure	MPa	0.6
Working pressure	MPa	0.003~0.4
Ambient and fluid temperature	°C	-5~60(No freezing)
Operating flow	L/min	5
Max. flow	L/min	50
Port size		2-Rc3/4
Mounting attitude	Limited to vertical position with indicator facing upward	

Flow characteristics

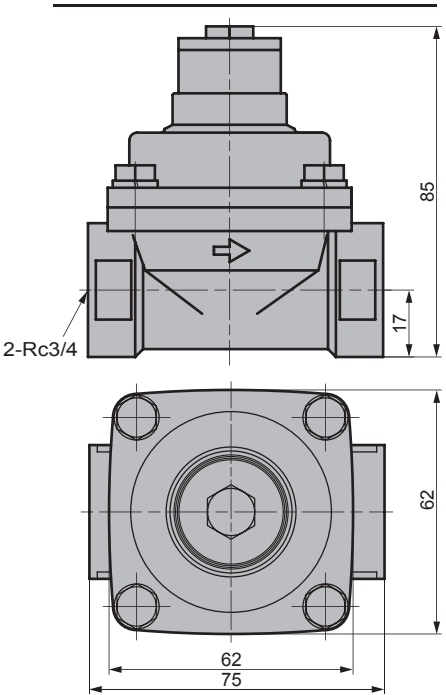


How to order

WFI - 50 - O - 20 - A

A Model Type		A Model Type	
		WFI	
B Flow rate		B Flow rate	
50	50L/min	●	
C Material of body and seal component		C Material of body and seal component	
Symbol	Body	O Ring	
O	Bronze	NBR	●
D Port size		D Port size	
20	3/4	●	
E Thread type		E Thread type	
A	Rc	●	

Dimensions



Caution

- As shown in figure 1, make sure the direction of the fluid is the same as the one that indicated on the body before installation.
- Product needs to be installed vertically with the indicator facing upward as shown in figure 1. It is forbidden to be installed obliquely or vertically downwards as shown in figure 2 and 3.
- Make sure to clean up cutting oil, dust and etc before piping. Any remain of dirt will possibly lead to the disfunction of the product.

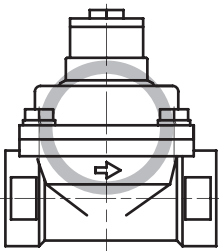


Figure 1

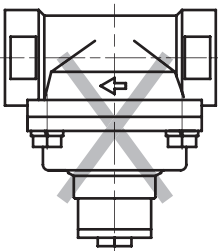


Figure 2

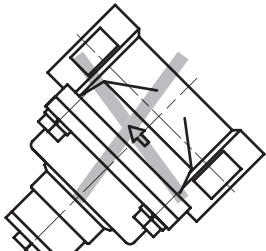


Figure 3

The goods and their replicas, or the technology and software in this catalog are subject to complementary export regulations by Foreign Exchange and Foreign Trade Law of Japan. If the goods and their replicas, or the technology and software in this catalog are to be exported, laws require the exporter to make sure they will never be used for the development or the manufacture of weapons for mass destruction.

CKD(China) Corporation

Headquarters

<Website>
[Http://www.ckd.com.cn](http://www.ckd.com.cn)

Adress: No. 21 Xinhua Road, New District, Wuxi,
Jiangsu Province China 214028
Tel: +86(0510)85345300 Fax: +86(0510)85345310

● CKD maintains a policy of ongoing product development and improvement.
We therefore reserve the right to change dimensions, specifications and design without notice
©CKD Corporation 2016 All copy rights reserved.
©Published by CKD (China) Corporation 2016