

# Compact mechanical valve MSE series

**New product**



### Overview

- A compact, lightweight, and space-saving 3-way pneumatic control valve that can be operated either manually, or by mechanical detection.
- Port size Rc1/8

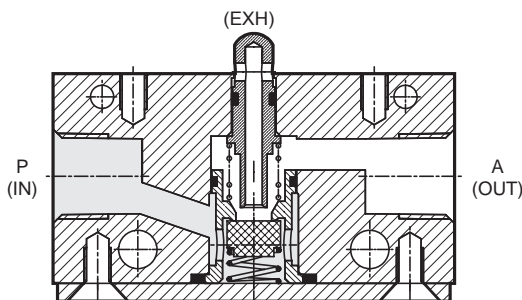
### Specifications

| Model no.                                | MSE-321         | MSE-321R | MSE-321PP       | MSE-321PB       |
|--|-----------------|----------|-----------------|-----------------|
| Working fluid                            | Compressed air  |          |                 |                 |
| Valve structure                          | Poppet valve    |          |                 |                 |
| Actuation                                | Normally closed |          |                 |                 |
| Working pressure                         | 0 to 1.0MPa     |          |                 |                 |
| Proof pressure                           | 1.5MPa          |          |                 |                 |
| Fluid temperature                        | -5 to 60°C      |          |                 |                 |
| Port size                                | Rc1/8           |          |                 |                 |
| Weight (g)                               | 48              | 59       | 94              | 103             |
| Effective sectional area mm <sup>2</sup> | 2.5             |          |                 |                 |
| Operating force Note N                   | 22              | 15       | 26              | 26              |
| Button color                             | -               | -        | Black/red/green | Black/red/green |
| Mounting orientation                     | Free            |          |                 |                 |

Note: Required force for operation at 0.5MPa pressure.

### Operational principle

- Operational explanation drawing
- During non-operating (OUT→EXH)



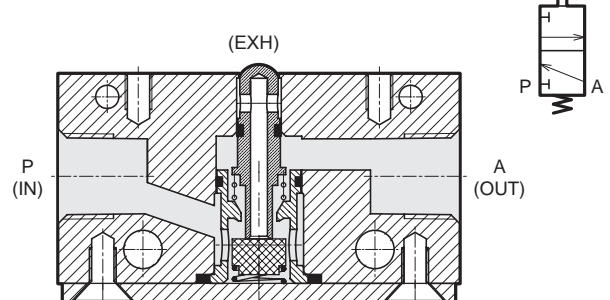
### How to order

**MSE - 321 R**

Ⓐ Actuator type

| Code  | Description            |
|---|------------------------|
| <b>Ⓐ Actuator type</b>  |                        |
| No code   | Pin plunger type       |
| R   | Roller lever type      |
| PP- *1  | Push button valve type |
| PB- *1  | Mushroom valve type    |
| <b>*1 Color-coded push-button type (PP) / mushroom button type (PB)</b> |                        |
| B   | Black                  |
| R   | Red                    |
| G   | Green                  |

Operation (IN→OUT)

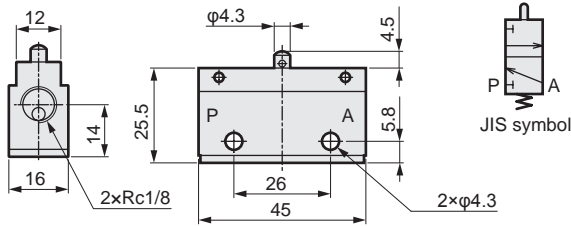


Note: Reverse-direction pressurizing (pressurizing from port "A") is not possible.

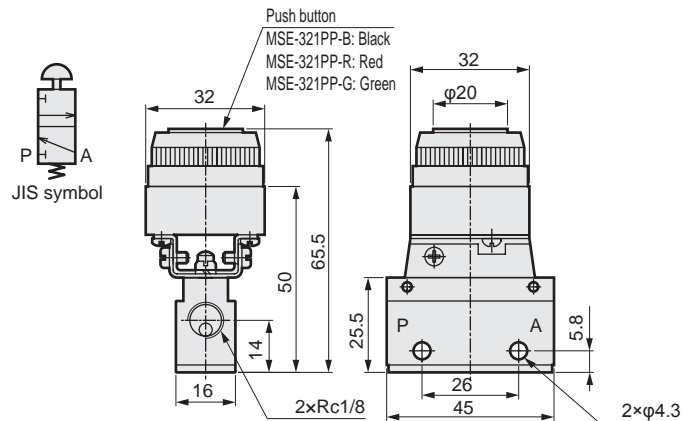
**⚠** Before starting use, be sure to read the safety precautions given on the rear face.



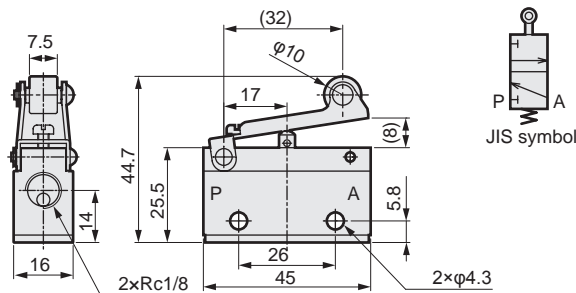
● MSE-321



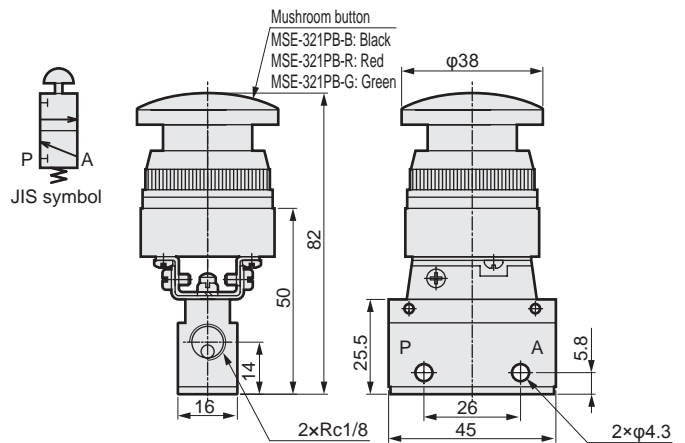
● MSE-321PP



● MSE-321R



● MSE-321PB



Safety precautions

⚠ Precautions

■ Piping

- Be sure to remove all dust and foreign matter, etc., from inside the piping before installing. Failing to do so could cause leakage inside the valve, and/or operation malfunctions.
- Using an excessive amount of sealant when installing the valve in the piping could allow sealant to enter the valve, possibly causing it to malfunction.

■ Operating

- When supplying compressed air after installation is completed, be sure to check all the piping connections to ensure that no air is leaking.
- Do not use the mechanical valve unit as a mechanical stopper.
- Operate in a manner which prevents an excessive force from being applied to the actuator.

■ Maintenance

- Before performing maintenance, always stop the air supply and verify that no residual pressure remains in the circuit.

If the goods and their replicas, or the technology and software in this catalog are to be exported, laws require the exporter to make sure they will never be used for the development or the manufacture of weapons for mass destruction.

CKD Corporation

<Website>  
http://www.ckd.co.jp/

Head Office•Plant  
Sales And Marketing Div.  
Tokyo Branch Office

Nagoya Branch Office  
Osaka Branch Office

2-250, Ouji, Komaki, Aichi 485-8551  
2-250, Ouji, Komaki, Aichi 485-8551  
4F, Bunkahousou Media Plus, 1-31-1, Hamamatsu-cho,  
Minato-ku, Tokyo 105-0013  
2-250, Ouji, Komaki, Aichi 485-8551  
1-3-20, Tosabori, Nishi-ku, Osaka 550-0001

TEL(0568)77-1111 FAX(0568)77-1123  
TEL(0568)74-1303 FAX(0568)77-3410  
TEL(03)5402-3620 FAX(03)5402-0120

TEL(0568)74-1356 FAX(0568)77-3317  
TEL(06)6459-5770 FAX(06)6446-1945