

XCAT Series

Small clamp cylinder

Features

- Clamping cylinder saving space.
- Cylinder switch can be mounted on the same surface as the piping port and can be mounting 4 side.



Specification

Descriptions	XCAT
Bore size (mm)	φ20
Actuation	Double acting
Working fluid	Compressed air
Max. working pressure (MPa)	1.0
Min. working pressure (MPa)	0.1
Proof pressure (MPa)	1.6
Ambient temperature (°C)	-10 to 60
Port thread	M5
Working piston speed (mm/s)	50 to 500
Cushion	Without cushion
Lubrication	Not require
Rotating angle	70°
Rotating direction'	Vertical

How to order

Without switch

XCAT - A L - 20 - 20 ----- FB - FL623097

With switch

XCAT - A L - 20 - 20 - T0H - R - FB - FL623097

Model no.

A Base type

B Bore size

C Stroke length

D Switch model

E Switch quantity

F Option

Symbol	Description
A. Base type	
A	Base for rod side flange type
B	Base for direct mount type

B. Bore size (mm)	
20	φ20

C. Stroke length (mm)	
Only 20 mm	

D. Switch model no.				
Axial lead wire	Radial lead wire	contact	Indicator	Lead wire
F2H*	F2V*	Proximity	1 color indicator type	2-wire
F3H*	F3V*			3-wire
F2YH*	F2YV*		Reed	2 color indicator type
F3YH*	F3YV*	3-wire		
T0H*	T0V*	Without light		1 color indicator type
T5H*	T5V*			
T1H*	-	Proximity	1 color indicator type	2-wire
T2H*	T2V*			3-wire
T3H*	T3V*		1 color indicator type (PNP Output/custom order)	
T3PH*	T3PV*			
T2WH*	-	2 color indicator type		
T2YH*	T2YV*			
T3WH*	-			3-wire
T3YH*	-	Strong magnetic field proof switch		
T2YD*	-			2-wire
T2YDT*	-			

* Lead wire length	
Blank	1m (standard)
3	3m (option)
5	5m (option)

E. Switch quantity	
R	One on rod end
H	One on head end
D	Two

F. Option	
Blank	Without mounting bracket
FB	Head end flange type (Base type B)

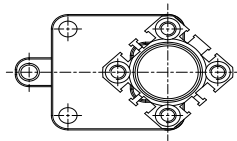
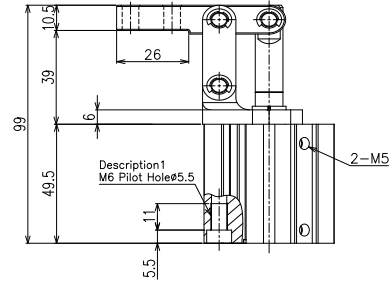
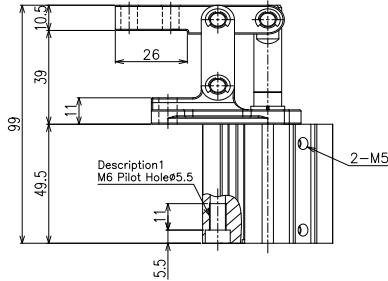
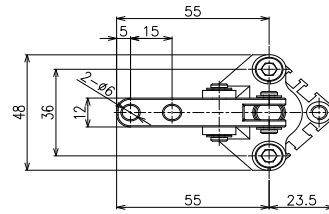
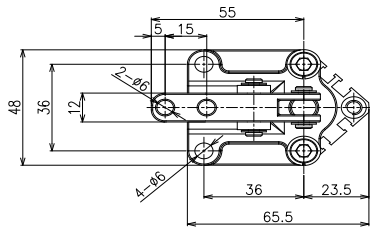
<Example of model no.>

XCAT-AL-20-20-T0H-R-FB-FL623097

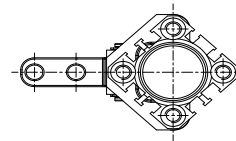
Model no: Small clamp cylinder.

- A** Base type : Base for rod side mounting
- B** Bore size : φ20
- C** Stroke length : 20 mm
- D** Switch model no. : Reed T0H switch/lead wire length 1 m
- E** Switch quantity : 1 (on rod end)
- F** Option : Head end flange type

XCAT Series

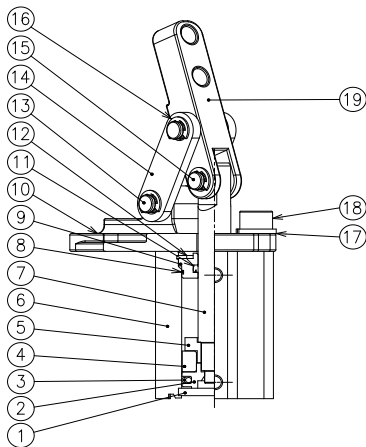


A : Rod side flange type (View 1)



B : Direct mount type (View 2)

Internal structure and parts list

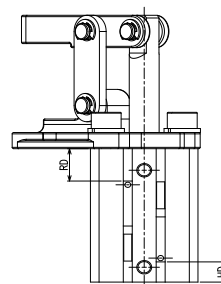
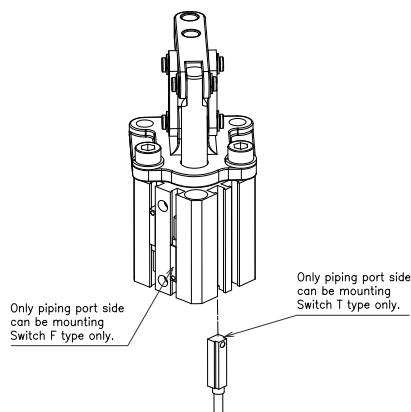


No.	Part name	Material	Remarks
1	Cover	Stainless steel	
2	Piston	Aluminum alloy	Chromate
3	Piston packing	Nitrile rubber	
4	Magnet	Plastic	
5	Spacer	Aluminum alloy	Chromate
6	Body	Aluminum alloy	Hard alumite
7	Piston rod	Stainless steel	Industrial chrome plating
8	Rod metal gasket	Nitrile rubber	
9	Rod metal	Special aluminum	Alumite
10	Base	Cast stainless steel	Short blast
11	Rod packing	Nitrile rubber	
12	C type snap ring	Steel	Zinc phosphate
13	Connecting pin	Stainless steel	
14	Link base	Stainless steel	
15	Lever pin	Stainless steel	
16	Snap ring	Steel	
17	Washer	Steel	
18	Hexagon socket head cap screw	Steel	Black finish
19	Lever	Cast stainless steel	Short blast

Repair part list

Kit No.	Repair part no.
SSD2-20K	③, ⑧, ⑩

Switch installation



Switch dimension	HD (mm)	RD (mm)
Reed T0H/T0V, T5H/T5V	3	7.5
Proximity T2H/T2V, T3H/T3V	3	7.5
Proximity T2WH/T2WV, T3WH/T3WV	5	9.5
Proximity F2H/F2V, F3H/F3V, F2YH/F2YV, F3YH/F3YV	7.5	12