

<Introduction>

Be guided by a New Zealand captain who fell in love with the Seto Inland Sea.

The start of the trip is in Kamijima, where sailors who have sailed all the seas around the world have decided to settle down. Sailing on a private 60ft catamaran, enjoy the beautiful scenery of nature, the seaside town and the traditional charms of the Setouchi islands. The trip finishes with a sunset cruise overlooking the night view of Onomichi Port. On this tour, you will enjoy the beauty of Japan with a luxury cruising local guide from New Zealand who knows the area well. If you would like a bespoke tour, that can also be arranged for with advance notice.

<What you will experience> ※ 3 points

1. See the Setouchi sunset from a luxury catamaran yacht (Sunset Cruise)

Seeing the sun setting into the Seto Inland sea from a luxury catamaran yacht is a once in a lifetime experience, a memory that you will never forget.



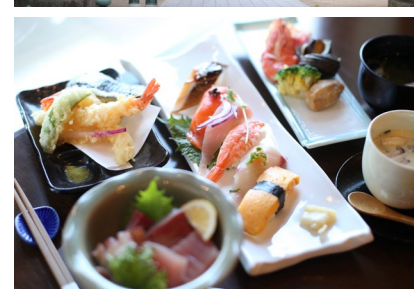
2. Visit one of Japan's greatest shrines which houses the largest collection of Samurai weapons and armors.

Visit Oyamazumi Shrine, one of the 4 greatest shrines of Japan, which has a treasure house with historically important and famous Samurai armors and swords, and has a 2600 years old camphor tree.



3. You can also enjoy food on the boat if you book in advance.

An island chef can prepare a meal from fresh local ingredients to enjoy on the catamaran while cruising.



<Reservation Information>

- | | |
|--|--|
| <ul style="list-style-type: none"> ■ Operating Period
All year round ■ Time required
Time required: 5 hours
Starting time: Early afternoon | <ul style="list-style-type: none"> ■ Operation Frequency
Once a day ■ Number of people (Maximum/Minimum)
Up to 11 people (1 person minimum)
Up to 6 people the number of participants doesn't affect the price |
|--|--|

<Meeting point and access>

- **Access by public transportation**
 - From Fukuyama Station take the Citrus Liner Highway bus to Habu Port. Walk to the port and take the ferry to Tateishi Port.
- **Meeting point and address**
 - Tateishi Port, Ikinajima, Ueshima Town
 - Possibility of pick up at Habu Port (extra fee)



<Language Support>

- **Languages Available**
 - Japanese ■ English Chinese Other
- **Interpreter available**
 - Yes No
- **Guide information**
 - The captain is an English native speaker
 - Local guide (extra fee)
- **Language Translation Tool**

<Other Plan Information>

- **Participant Requirements**
 - Person who is in good physical condition.
 - Person who is 12 years old and over.
- **Cancellation Policy**
 - 20 days before 20% • 7 days before 30% • 2 days before 40% • The day before 50% • The same day 100%
- **Precautionary considerations**
 - People with sea sickness should prepare the necessary medicine in advance.
 - Smoking is prohibited on board. Please refrain from smoking.
- **In case of bad weather, emergency, delay or no show**
 - If for any reasons, participants should be late for more than 15 minutes without contacting us, we will treat it as a cancellation on the day (cancellation fee: 100%).
 - Even in rainy weather, the tour will take place, but the plan content will be changed slightly depending on the situation.
 - If the tour is cancelled due to extreme bad weather, we will contact you by the morning and there will be no cancellation fee.
- **Insurance Support**
Marine insurance
- **Inventory Management**
 - Yes No
- **Support hours**
8:00 ~ 20:00
- **Inquiry email address (company/person in charge)**
sam@kazeyachtcharter.com
Kaze Yacht Charter /Person in charge: Mr. Sam

<Package Information>

- **Price (Tax excluded)**
Contact us for pricing
- **Options/Price (Tax excluded)**
 - Meal on board (inquiry required)
 - Possibility of shuttle by yacht from any port of the Shimanami Kaido (inquiry required)
- **What's Included**
The fees include fares for catamaran boarding (fuel, captain, life jacket, etc.).
- **What's Not Included**
 - Food and drink on board