



VISITING FANS GUIDE



VS

ATALANTA BC – CHELSEA FC

BERGAMO (ITA)



General Info

Italian Ticketing Policy

In relation to the provisions of the Italian law, the ticket in Italy is nominal and must necessarily contain the personal information, i.e. name, surname, gender, date and place of birth of the ticket holder. At the access gates of the stadium, each ticketholder must show the regular ticket and a valid identity document (ID or passport) to the security personnel responsible for checking.

General Info about Host City

Geographical location

Bergamo is a city in the alpine Lombardy region of northern Italy, approximately 40 km (25 mi) northeast of Milan, and about 30 km (19 mi) from the alpine lakes Como and Iseo and 70 km (43 mi) from Garda and Maggiore. The Bergamo Alps (Alpi Orobie) begin immediately north of the city. With a population of around 120,000, Bergamo is the fourth-largest city in Lombardy. Bergamo is the seat of the province of Bergamo which counts over 1,103,000 residents. All information about the city at <https://www.visitbergamo.net>



Nearby airports

The international Milan-Bergamo Airport “Il Caravaggio” of Bergamo-Orio al Serio is located in the town of Orio al Serio, 5 km away from the city centre.

- **MILAN BERGAMO AIRPORT “Il Caravaggio”**
Via Aeroporto, 13, 24050 Orio al Serio BG | +39 035326323 | www.milanbergamoairport.it
Distance to the Bergamo Stadium: 9 km
- **MILANO LINATE AIRPORT**
Viale Enrico Forlanini, 20090 Segrate MI | +39 02 232323 | www.milanolate-airport.com
Distance to Bergamo Stadium: 60 km
- **MILANO MALPENSA AIRPORT**
21010 Ferno VA | +39 02 232323 | www.milanomalpensa-airport.com
Distance to Bergamo Stadium: 94 km



About the Club

Atalanta Bergamasca Calcio, commonly referred to as Atalanta, is a football club based in Bergamo, Lombardy. Currently presided over by Antonio Percassi, the Club was founded on the 17th of October 1907 and was named after the mythological character Atalanta. The tireless huntress and unbeatable runner from the Greek mythos is also depicted, portrayed in profile on a black-and-blue background, on the Club's emblem. Knighted "Regina delle provinciali" (Queen of the Provincial Clubs), Atalanta holds the record for most appearances in Italy's top-flight with the 2024/25 campaign marking the Club's 64th season in the Serie A, thus making it the most consistent team among Italian clubs not based in a regional capital. The Club holds the all-time record for promotions to the Serie A and 6 Serie B (the second-highest division in the Italian football league system) titles, a joint-best with Genoa. The Nerazzurri took part in six Coppa Italia finals, winning the trophy in the 1962/63 season. On a Continental level, the Club participated in: two Cup Winners' Cup seasons, two UEFA Cup campaigns and three UEFA Europa League seasons, while being eliminated in the 2018/19 UEL qualifying round. Having reached the semifinals of the 1987/88 Cup Winners' Cup while still competing in the Serie B, Atalanta set the standing record for best finish in a UEFA competition of a club playing outside its country's top flight league. Atalanta also took part in three UEFA Champions League seasons (namely, the 2019/20, 2020/21 and 2021/22 campaigns), reaching the quarterfinals in the 2019/20 season. Thanks to their 3rd place finish in the 2020/21 Serie A, the team qualified for the 2021/22 UCL, thus retaining its spot in Europe's top-flight pageant for the third year in a row. And by securing another fifth-place finish in the 2022/23 Serie A campaign, Atalanta qualified for the 2023/24 UEFA Europa League after missing out on European football for one season. The 2023/24 campaign set a new historic high for the Nerazzurri as Atalanta lifted the UEFA Europa League trophy after halting Bayer Leverkusen's 51-game unbeaten run with a 3-0 win in the Dublin final. Additionally, thanks to the final 4th place finish in the league, Atalanta qualified to the new format of the UEFA Champions League (thus giving further credentials to their "UCL submission" after gaining access to football's most coveted stage on the grounds of their UEL-winners status).

All information about the Club at www.atalanta.it and on the official Social Media Channels.



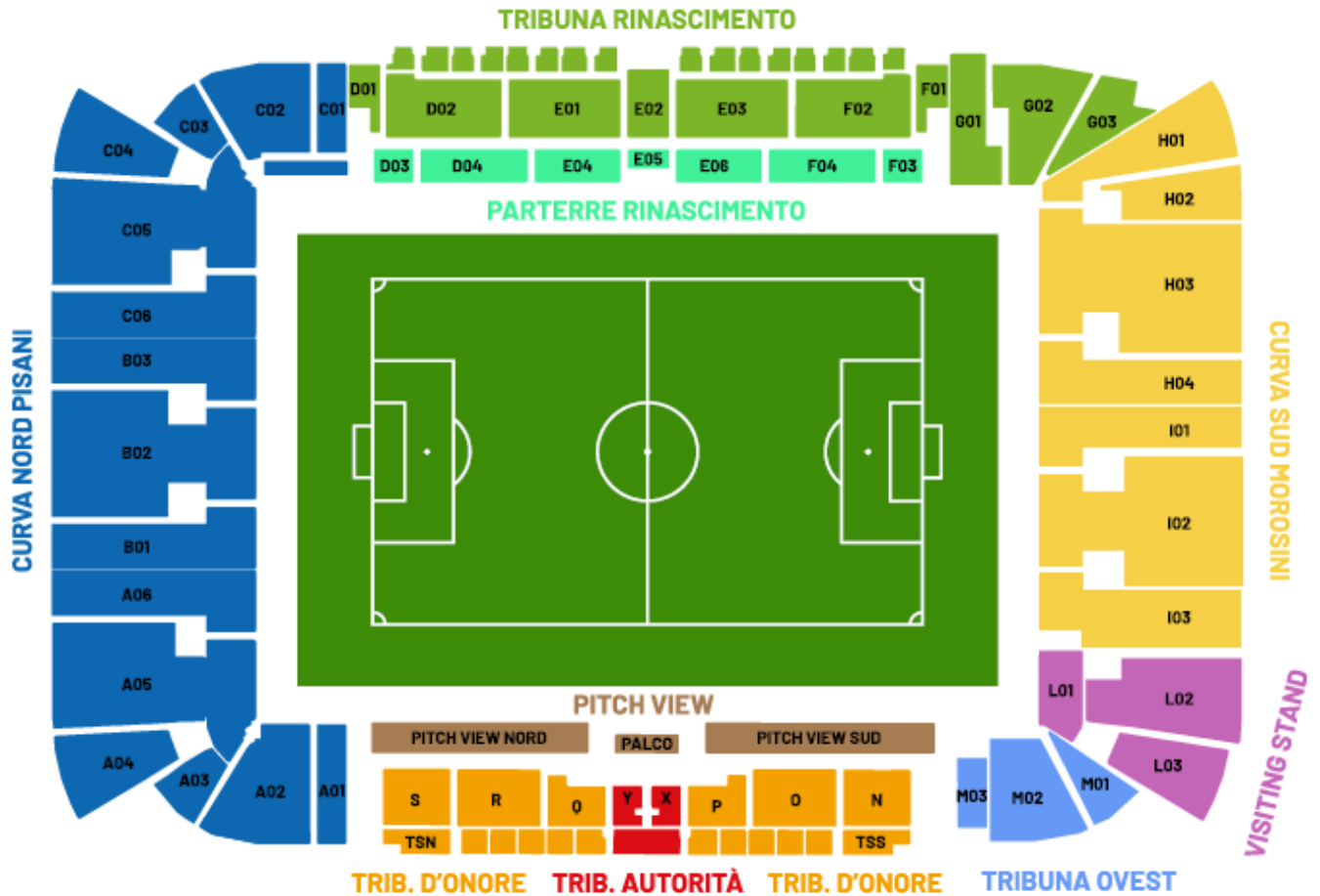


About the Stadium

Atalanta B.C. will play all the home games of the 2025-26 UEFA Champions League season at the “Stadio di Bergamo” in Bergamo city.



Capacity: 23.439



Away Supporter capacity: 1.304

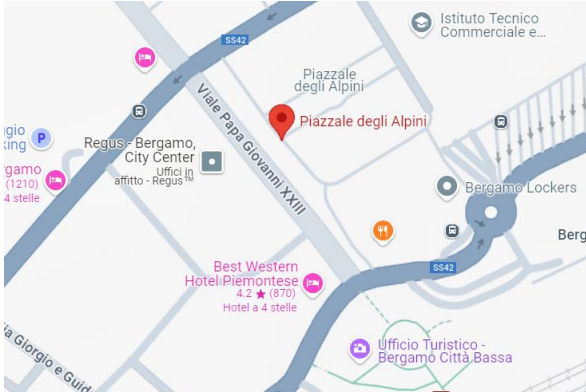




Matchday

MEETING POINT – Mandatory

There will be a dedicated meeting point for the away fans in “Piazzale degli Alpini”, close to the train station and in the Bergamo city centre (<https://maps.app.goo.gl/Dmt3sbSwXgSc9cFU9>):



- Food and Beverage;
- Toilets for women/men;



- There will be a dedicated shuttle bus service from the city center “Piazzale degli Alpini” directly to the *visiting stand* gate of the Stadium before the match, and back from the stadium to the meeting point after the match. Please note, the bus service above mentioned will be free of charge;
- Is mandatory to reach the stadium only with the shuttle bus service (also qualified for wheelchairs);
- Fan march/walk (*corteo*) is not allowed;
- It is strongly recommended not to travel to Bergamo without a valid ticket for the match.

NO GO ZONES

On behalf of the Police of Bergamo, please find below NO GO ZONE for your fans (walk/public transportation) in the following zones/place of the city:

- North Stand of the Stadium (Curva Nord);
- South Stand of the Stadium (Curva Sud);
- East Stand of the Stadium (Tribuna Rinascimento);
- Viale Giulio Cesare;
- Piazzale dello Sport;
- Via dei Celestini;
- PUB/BAR «Il Baretto»;
- neighborhood “Redona”;
- neighborhood “Monterosso”;
- neighborhood “Conca Fiorita”;
- neighborhood “Borgo Santa Caterina”;
- Via Corridoni;
- Via Bianzana;
- All the other information shared by the local police on the days before the match.

VISITING STAND

- **Luggage storage:** NO
- **Catering facilities:** food and beer (<5%)
- **Catering Menù:**

FOOD		SNACK		DRINK	
Pane&Salame	€ 6	Chips	€ 2	Coffee	€ 1,50
Pane&Mortadella	€ 6	Chocolate	€ 2,50	Decaffeinated coffee	€ 2
Ham and cheese Focaccia	€ 6	Gummy sweets	€ 2,50	Hot tea	€ 3
Classic Hot Dog	€ 6	Chewing Gum	€ 2,50	Still/Sparkling Water	€ 2
Special Hot Dog	€ 7			Coca-Cola / Zero, Fuze Tea, RedBull	€ 4
				Beer / Beer gluten free	€ 6

- **Payment systems:** card and cash (Euro €)
- **Drums and Megaphones:** allowed (request by MD-5, copy of ID/Passport for each responsible fan, i.e. 1 drum → 1 responsible, etc.)
- **Bags/backpack size:** A4
- **Prohibited items:**



The diagram illustrates the seating arrangement for the Stadio Renato Dall'Ara. The central green area represents the football pitch. Surrounding the pitch are various seating areas and stands, each labeled with a number and a description:

- Top Stand:**
 - 7A: Disabili Tribuna Ovest
 - 7: Tribuna Ovest
 - 8: Tribuna d'Onore
 - 9: Servizio
 - 10: Corporate
- Left Stand:**
 - 6A: Disabili Settore Ospiti
 - 6: Settore Ospiti/Away stand
 - 5: Curva Sud Morosini
 - 4A: Disabili Rinascimento Sud
 - 4: Rinascimento Sud
- Right Stand:**
 - 1A: Disabili Nord A
 - 1: Curva Nord Pisani
 - 1C: Disabili Nord C
 - 2: Rinascimento Nord
- Bottom Stand:**
 - 3: Portone Monumentale Corporate
- Other Areas:**
 - 0: OB Van
 - DA: Dorsale A
 - DC: Dorsale C
 - DA01, DA02, DA03, DA04: Dorsale A sections
 - B01, B02, B03, C06, C05, C04, C03, C02, C01: Curva Nord Pisani sections
 - F01, F02, F03, F04, E01, E02, E03, E04, E05, E06, D01, D02, D03, D04, D05, D06, D07, D08, D09, D10, D11, D12, D13, D14, D15, D16, D17, D18, D19, D20, D21, D22, D23, D24, D25, D26, D27, D28, D29, D30, D31, D32, D33, D34, D35, D36, D37, D38, D39, D40, D41, D42, D43, D44, D45, D46, D47, D48, D49, D50, D51, D52, D53, D54, D55, D56, D57, D58, D59, D60, D61, D62, D63, D64, D65, D66, D67, D68, D69, D70, D71, D72, D73, D74, D75, D76, D77, D78, D79, D80, D81, D82, D83, D84, D85, D86, D87, D88, D89, D90, D91, D92, D93, D94, D95, D96, D97, D98, D99, D100: Various seating areas in the bottom stand

2 hours before the match (3 hours before the match for the away fans).

Before entering the filter zone, the stewards check the tickets and ID/Passport. Subsequently, control through pat-down of the entire public takes place. Electronic ticket control at the turnstiles/mobile scanners at each gate. Since each ticket is nominal the stewards can control the identity of the holder by checking the personal data on



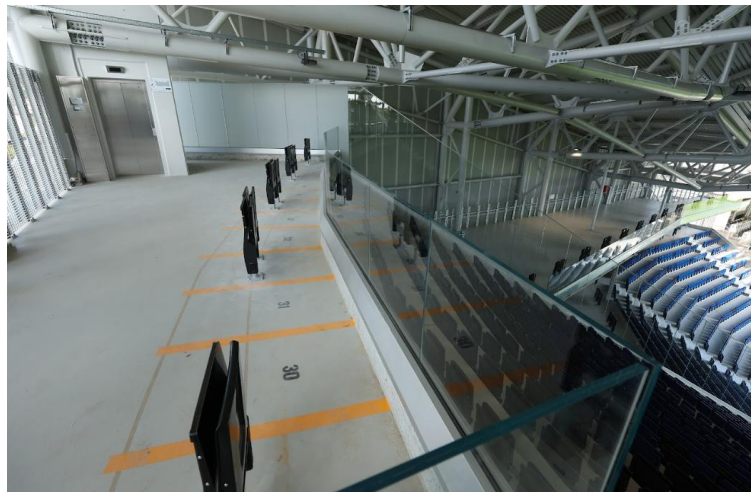
the passport. At the end of the match, for the visiting fans there is the possibility of waiting before leaving the stadium (it depends by the local authorities).

Smoking Policy

Smoking is forbidden.

Matchday facilities for fans with disabilities

- **Number of wheelchair bays with accompanying seats available in the visiting sector: 8+8;**
- **Number of wheelchair bays with accompanying seats available in the sector close to the visiting sector: 4+4 (Tribuna Ovest);**
- **Price:** both tickets (wheelchair and companion) are free of charge, complimentary;
- **Entry procedures:** elevator.





UEFA
RTE DE GENÈVE 46
CH-1260 NYON 2
SWITZERLAND
TELEPHONE: +848 00 27 27
TELEFAX: +41 848 01 27 27
UEFA.COM

WE CARE ABOUT FOOTBALL