

Laying and Care Recommendations

ExCinere is a volcanic ash-glazed gris porcelain tile, suitable for both interior and exterior surfaces, from kitchen counters and bathroom floors to architectural facade cladding.

Cleaning and General Care

Remove dust from the surface with a soft broom or vacuum cleaner. Clean using warm water and a mild detergent. Do not use abrasive detergents and sponges.

ExCinere is food safe and a regularly cleaned surface will not be affected by liquids commonly used in a food and beverage setting. Avoid prolonged exposure to solvents, highly alkaline and acidic products.

Adhesive Advise and Products

Adhesive for gris porcelain tiles.

Porcelain tiles must be solidly bedded using a notched trowel to apply the adhesive onto the substrate. Take the flat side of the trowel and smooth over the adhesive to produce a uniform, ridge-free bed. We also recommend applying the adhesive to the back of the tile (back buttering) to ensure a strong bond.

- Mapei KERAQUICK for floors to normal substrates, internal and external.
- Mapei KERAFLEX MAXI for walls to normal substrates, internal and external.

Grout Advise and Products

Cement based grout or epoxy grout.

Grouting may take place once the adhesive is completely set. Make sure that the waiting times in the technical data sheets are followed. Mix the grout as per manufacturer's instructions to form an even paste. Fill the joints using a grout float or rubber squeegee, without leaving any gaps or steps. Remove any excess from the surface being careful not to remove the grout from the grout line. After about 30 minutes, once the mix has lost its plasticity, clean off the excess grout. If using an epoxy grout, clean immediately. The minimum grout space when tiles are all arranged

horizontally (or vertically) is 2mm. When mixing horizontal and vertical arrangements, allow a spacing of 5mm.

- Mapei ULTRACOLOR PLUS.
- Mapei KERAPOXY.

Care and Maintenance Products Advise

First Cleaning
– Fila DETERDEK.

Regular cleaning
– Fila CLEANER PRO.
– FilaBRIO.

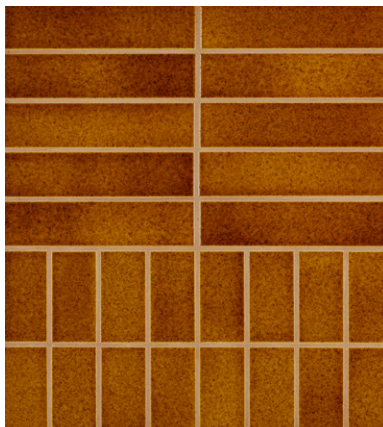
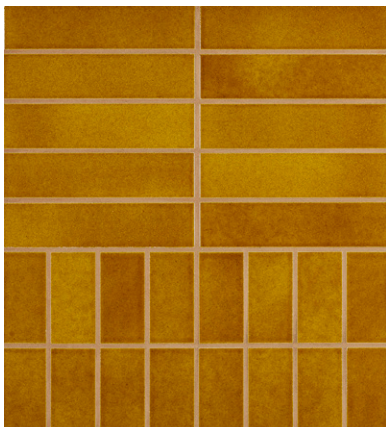
Rust Remover
– Fila NO RUST.

Grout protection
– Fila FUGAPROOF.

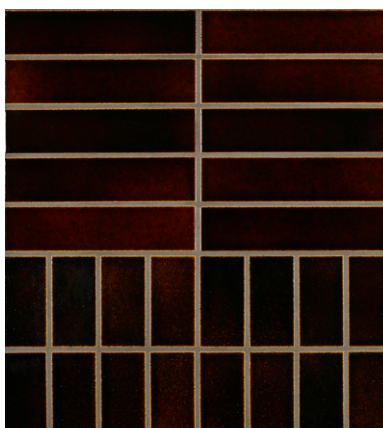
Follow the manufacturer's recommendations on all products outlined within this guide. We do not accept any responsibility for the performance of any of these products.

Cutting

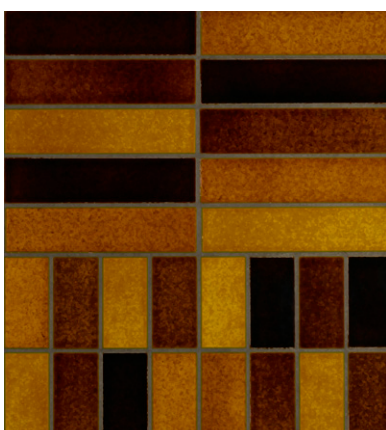
Porcelain tiles are very strong and it can be quite difficult to cut them using a score and snap cutter. To ensure accuracy we would recommend using an electric diamond wheel tile cutter with a diamond encrusted blade, especially when taking on irregular cuts such as around plug sockets, taps, pipes etc.



Grout:
Mapei 142_brown



Grout:
Mapei 149_volcano sand



Grout:
Mapei 149_volcano sand

