



← 34' →

Min. Lot Width

 3 Bedrooms

 2½ Bathrooms

 Double Garage

THE ROSEWOOD

2481 SQ.FT.

☐ Elements Specification

☐ Elite Specification

☐ Elite Plus Specification

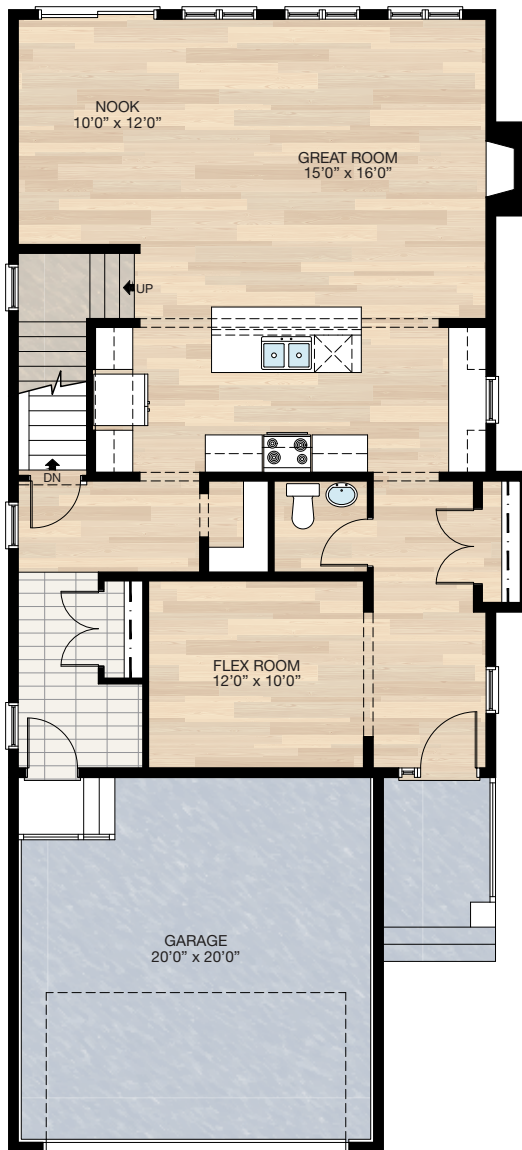


Trico Homes™

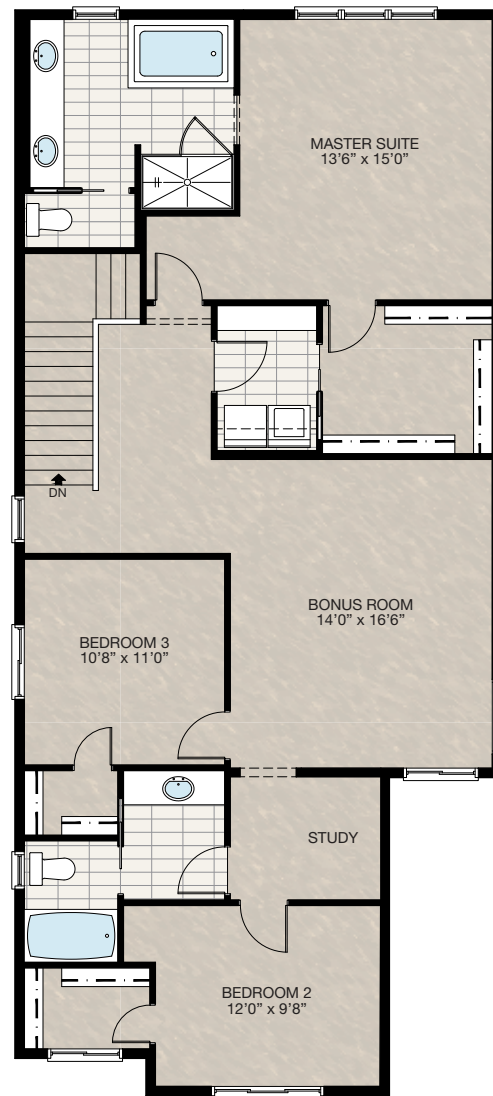
The Heart of Homebuilding®

STANDARD PLAN

THE
ROSEWOOD
2481 SQ.FT.



MAIN
1089 SQ.FT.



UPPER
1392 SQ.FT.

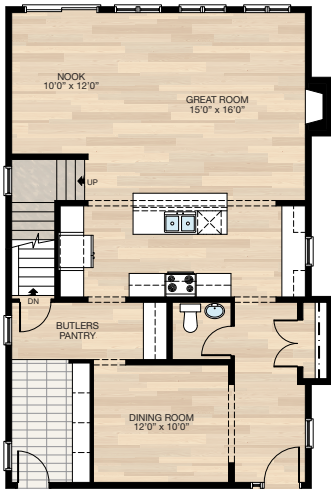
SOLID CORE PLANK	DECK	CARPET	CONCRETE	TILE	LAMINATE	LINO
---------------------	------	--------	----------	------	----------	------

FEATURED OPTIONS



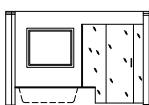
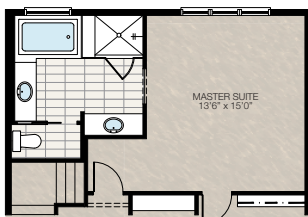
SELECT-1 DINING ROOM WITH BUTLER'S PANTRY OPTION

- Delete pantry and add upper & lower cabinets
- Delete upper & lower cabinets beside the fridge and replace with full-height cabinet pantry
- Open up wall between hallway and dining room with a DBH
- Extend beam and move post to wall beside half bath. This will alter the beam and post locations below as well



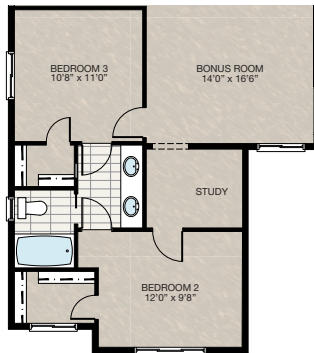
SELECT-4 ENSUITE OPTION

- Delete fibreglass shower and add tile & 10mm glass shower
- Separate vanity into two 5' vanities
- Change window size to 48" x 40"



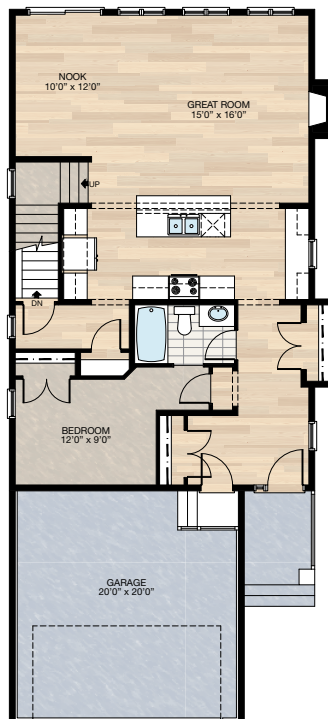
SELECT-2 JACK & JILL BATHROOM OPTION

- Add a second door and 3-way switch
- Extend vanity and add second sink



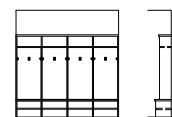
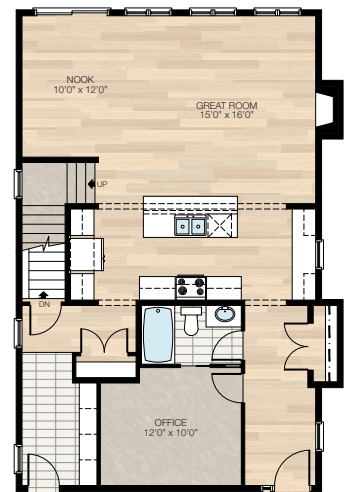
SELECT-5 MAIN FLOOR BEDROOM OPTION

- Flex room becomes bedroom and mud room is deleted
- Reduce window width from 30" x 72" to 24" x 72"
- Add a tub/shower to half bath and a 2'6" pocket door
- Move mudroom closet to front entry



SELECT-3 MAIN FLOOR OFFICE OPTION

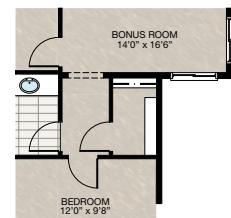
- Flex room becomes office
- Add a tub/shower to half bath and a 2'6" pocket door
- Delete mudroom closet and install lockers
- Pantry is reduced



Mudroom Locker Detail

SELECT-3 STORAGE ROOM OPTION

- Convert study into storage room



SOLID CORE
PLANK

DECK

CARPET

CONCRETE

TILE

LAMINATE

LINO

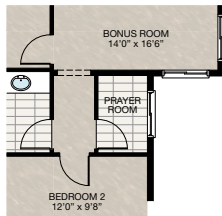
tricohomes.com

FEATURED OPTIONS

THE
ROSEWOOD
2481 SQ.FT.

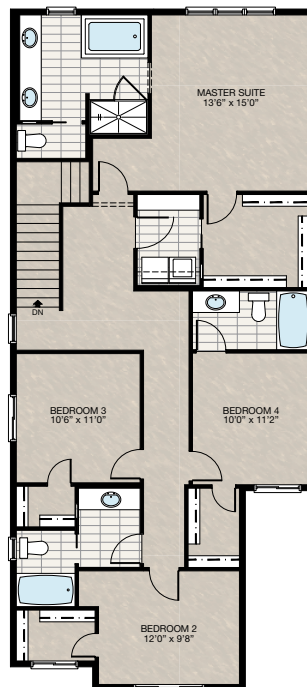
☐ **SELECT-7 PRAYER ROOM OPTION**

- Convert study into prayer room
- Tile flooring
- Add window



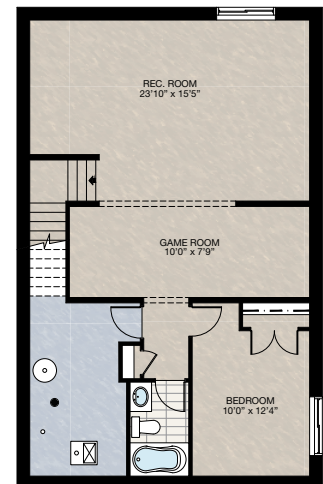
☐ **SELECT-8 FOUR BEDROOM OPTION**

- Delete bonus room
- Add forth bedroom with full ensuite and walk-in closet
- Delete one 48" x 32" window



☐ **SELECT-9 BASEMENT DEVELOPMENT OPTION**

- 745 Sq.Ft. of developed area
- Includes finished basement stairwell
- Move 2'8" passage door from top of stairwell to mech. room
- Add one riser to stairwell for 9' basement ceiling (8'9" headroom clearance)
- 60" x 24" Windows changed to 60" x 36"



Trico Homes is a local home builder, with new single and multi-family homes for sale in Calgary, Okotoks, Chestermere, Cochrane, and Airdrie. Offering a great selection of starter, move-up and semi-estate models in numerous communities, you'll find the house that's just right for you! Look for this model and many others in Beacon Heights in Sherwood, Belmont, Bridgeport, Carrington, Chelsea, Coach Ridge, Cornerbrook, Cranston's Riverstone, Crestmont, D'Arcy, Evanston, Heritage Hills, Hillcrest, Lakeview, Legacy, Legacy Commons Townhomes, Midtown, Nolan Hill, Pine Creek, Redstone, Riviera, Seton, Sirocco, Unity in Seton Townhomes, Verona Townhomes & Viridian Condos in Sage Hill, Wentworth Pointe Townhomes and Wolf Willow.



Renderings are artist's conceptions only and may vary by community and lot selection. Prices, floorplans, specifications and dimensions are approximate and are subject to change without notice. E.O.E. © All rights reserved, including the right if reproduction in the whole or in part without the permission of Trico Homes.

Plan updated as of Aug 8, 2018



tricohomes.com