
 3 Bedroom

 2½ Bathrooms

 Double Garage

THE MARLOW

1908 SQ.FT.

☐ Elements Specification

☐ Elite Specification

☐ Elite Plus Specification



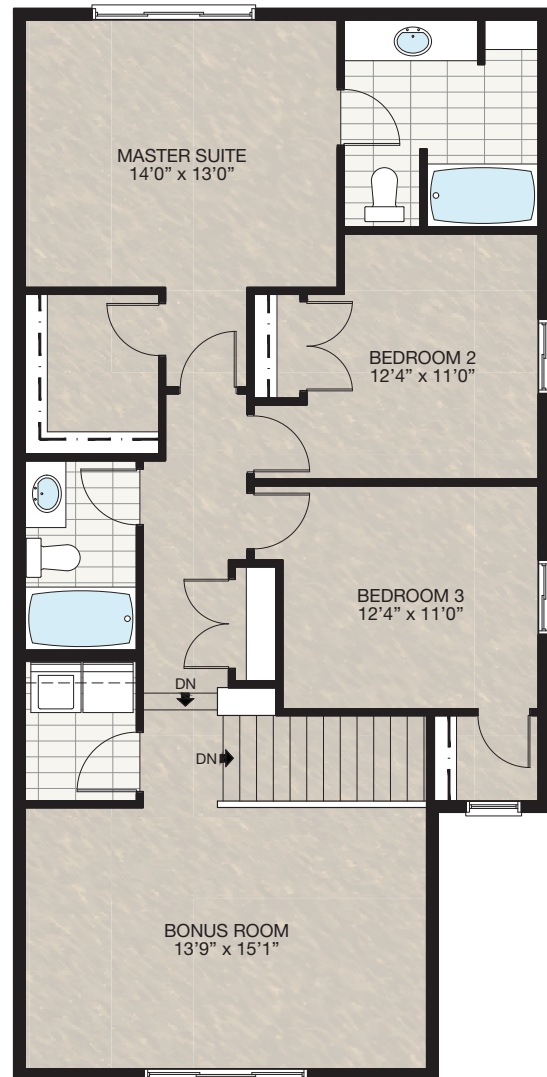
Trico Homes™
The Heart of Homebuilding®

STANDARD PLAN

THE
MARLOW
1908 SQ.FT.



MAIN
816 SQ.FT.



UPPER
1092 SQ.FT.

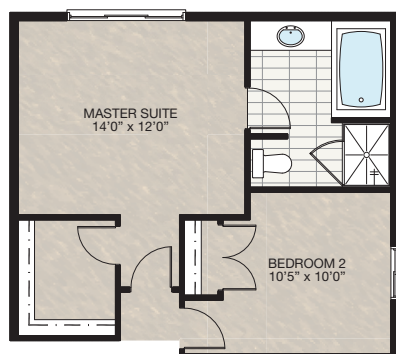
SOLID CORE PLANK	DECK	CARPET	CONCRETE	TILE	LAMINATE	LINO
---------------------	------	--------	----------	------	----------	------

FEATURED OPTIONS



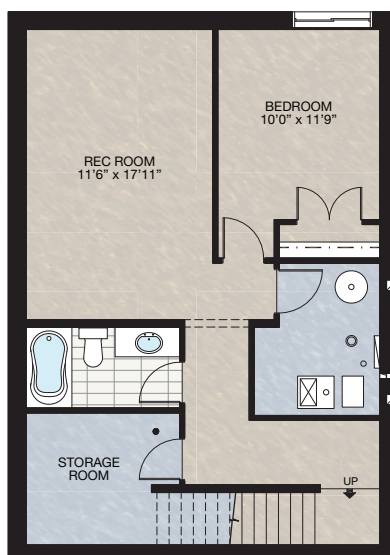
SELECT-1 ENSUITE OPTION

- Bedroom 2 reduced by 12" (adjust window location)
- Delete tub/shower unit
- Add 48" x 36" Fibreglass shower with 5mm glass door
- Add 60" soaker tub with tiled tubdeck
- Delete one standard light fixture and add downlight to shower on separate switch
- Reduce vanity to 60"



SELECT-2 BASEMENT DEVELOPMENT OPTION

- 537 Sq.Ft. developed area
- Add extra riser to stairwell for 9' basement ceiling with 8'9" headroom clearance
- Include finished basement stairwell
- Delete 2'8" door at top of stairwell
- 60" x 24" Windows changed to 60" x 36"



THE
MARLOW
1908 SQ.FT.

THE
MARLOW
1908 SQ.FT.

[illegible]

CANADA'S **BEST
MANAGED
COMPANIES**
Platinum member
2004 - 2018



Plan updated as of Aug 8, 2018

