



**MAY POSSESSION**



# THE JASPER<sup>ZLL</sup> 1943 SQ.FT.

**519 Belmont Heath SE**



3 Bedrooms



2½ Bathrooms



Double Garage

## OPTIONS INCLUDED IN THIS HOME ARE:

- Near parks & pathways
- Arts & Crafts elevation
- 9' Foundation
- 2' Nook extension
- 12' x 10' rear deck (with railings & stairs)
- Gas line to deck
- Pull-out kitchen faucet with spray
- Under cabinet lighting
- Downlights added to great room & bonus room
- Railing at great room, up to & on second floor
- 4-Piece ensuite option (with second sink included)
- Washer & dryer included
- Elite specifications included (without fireplace)

## COME VISIT OUR SHOWHOME

**108 & 112 Belmont Terrace SE, Calgary AB**

Call Shawna Christensen today at 403.764.0301 or email at [belmont@tricohomes.com](mailto:belmont@tricohomes.com)



THE WINSTON ZLL



THE HUDSON ZLL

## SHOWHOME HOURS:

**Mon - Thurs: 2pm - 8pm**

**Fri: Closed**

**Sat - Sun: 12pm - 5pm**

## PLUS RECEIVE YOUR OWN TRICO RED CARD



**& ENJOY INCREDIBLE  
ONGOING SAVINGS &  
REWARDS FROM OUR  
PARTNERS & RETAILERS**



**Trico  
Homes™**  
The Heart of Homebuilding®

**BELMONT**

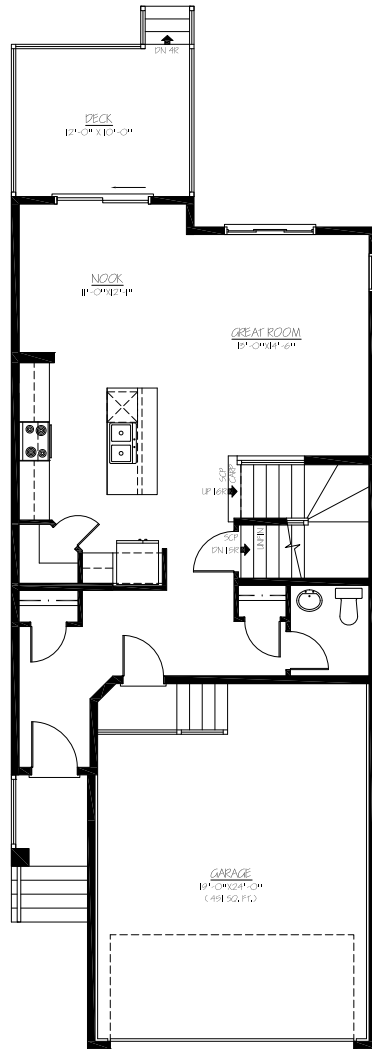


[tricohomes.com](http://tricohomes.com)

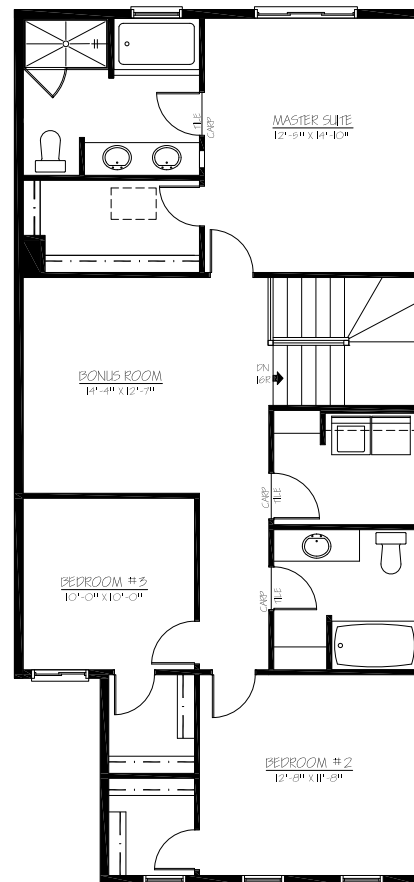


# THE JASPER<sub>ZLL</sub> 1943 SQ.FT.

519 Belmont Heath SE



**MAIN**  
779 SQ.FT.



**UPPER**  
1164 SQ.FT.



Renderings are artist's conceptions only and may vary by community and lot selection. Prices, floorplans, specifications and dimensions are approximate and are subject to change without notice. E.O.E. © All rights reserved, including the right of reproduction in the whole or in part without the permission of Trico Homes.

Plan updated as of January 16, 2019.



tricohomes.com