
 3 Bedrooms

 2½ Bathrooms

# THE McKENZIE

1640 SQ.FT.

☐ Elements Specification

☐ Elite Specification

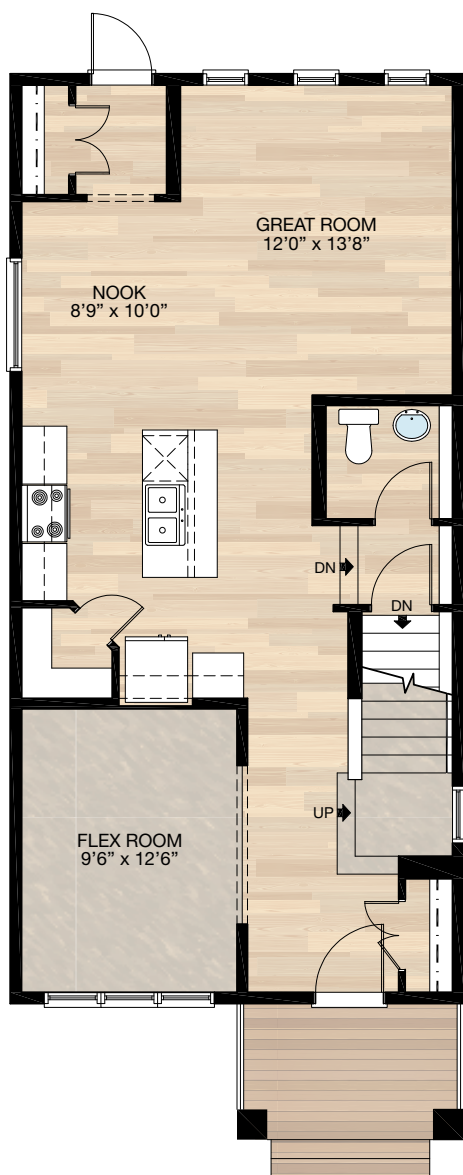
☐ Elite Plus Specification



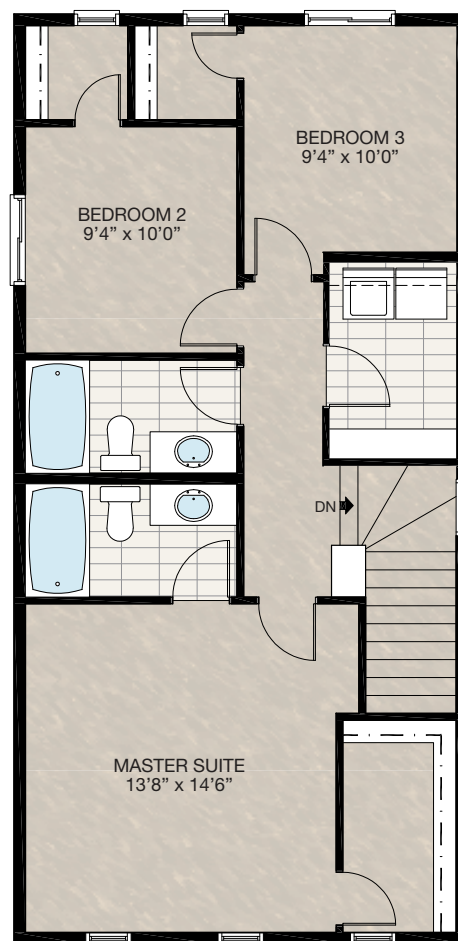
Trico Homes™  
The Heart of Homebuilding®

# STANDARD PLAN

THE  
**McKENZIE**  
1640 SQ.FT.



**MAIN**  
820 SQ.FT.



**UPPER**  
820 SQ.FT.

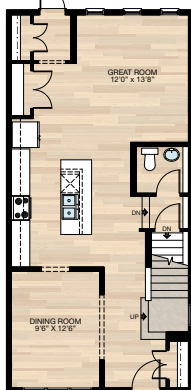
SOLID CORE PLANK	DECK	CARPET	CONCRETE	TILE	LAMINATE	LINO
------------------	------	--------	----------	------	----------	------

# FEATURED OPTIONS



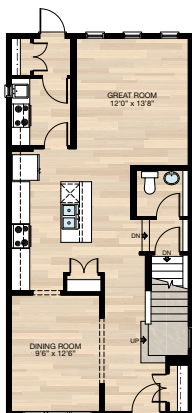
## SELECT-1 KITCHEN OPTION

- Delete nook & 60" x 24" P window
- Flex room becomes dining room
- Flex room flooring from carpet to laminate
- Additional 36" of upper & lower cabinetry
- Additional 18" of kitchen island with 2-sided eating bar



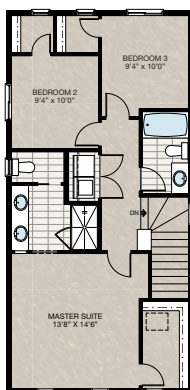
## SELECT-2 SPICE KITCHEN OPTION

- Spice kitchen includes:
  - 24" Upper & lower cabinets
  - 33" Lower cabinet with sink
  - Stove & hoodfan
  - 16" x 30" VSL window
- Delete nook & 60" x 24" P window
- Flex room becomes dining room
- Flex room flooring from carpet to laminate
- Additional 24" upper & lower cabinet to main kitchen
- Rear entry closet reduced to 10" in length



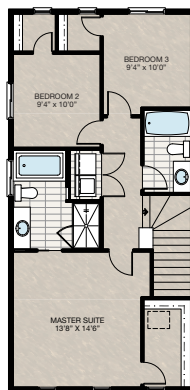
## SELECT-3 ENSUITE OPTION 1

- 84" Dual vanity to ensuite
- Water closet with 2'6" pocket door
- Add 24" x 36" VSL window to water closet
- 60" x 36" Fibreglass shower
- Laundry closet in lieu of laundry room



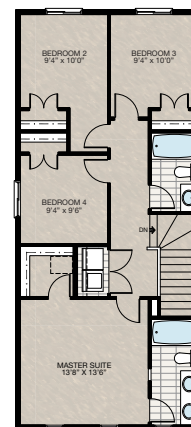
## SELECT-4 ENSUITE OPTION 2

- 60" x 32" Soaker tub comes with 4" tile deck
- 60" x 36" Fibreglass shower
- Add 48" x 30" HSL window to ensuite
- 54" Vanity to ensuite
- Laundry closet in lieu of laundry room



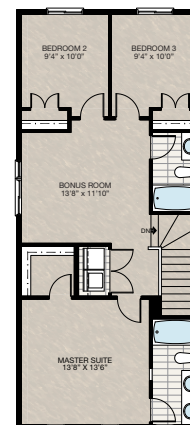
## SELECT-5 4 BEDROOMS UPPER FLOOR OPTION

- Additional 80 sq.ft. to upper floor (2'0" x 20'0" Cantilever to both front & rear of upper floor)
- 70" Dual vanity to ensuite
- 5'8" x 5'4" Walk-in closet to master suite
- Laundry closet in lieu of laundry room
- Add 48" x 48" HSL window to bedroom 2
- Delete two 24" x 48" P windows from rear



## SELECT-6 BONUS ROOM OPTION

- Additional 80 sq.ft. to upper floor (2'0" x 20'0" Cantilever to both front & rear of upper floor)
- 70" Dual vanity to ensuite
- 5'8" x 5'4" Walk-in closet to master suite
- Laundry closet in lieu of laundry room
- Delete two 24" x 48" P windows from rear
- Add 48" x 24" HSL / 24" x 24" P windows to bonus room



SOLID CORE  
PLANK

DECK

CARPET

CONCRETE

TILE

LAMINATE

LINO

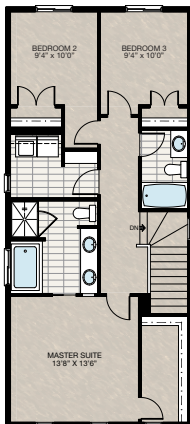
tricohomes.com

# FEATURED OPTIONS

THE  
**McKENZIE**  
1640 SQ.FT.

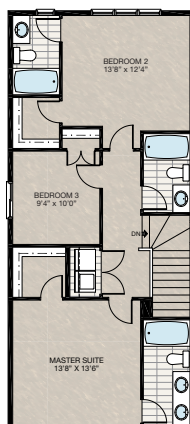
## **SELECT-7** 4-PIECE ENSUITE WITH LAUNDRY ROOM OPTION

- Additional 80 sq.ft. to upper floor (2'0" x 20'0" Cantilever to both front & rear of upper floor)
- 84" Dual vanity to ensuite
- 60" x 36" Soaker tub with 4" tile deck to ensuite
- 48" x 36" Fibreglass shower to ensuite
- Add 24" x 36" VSL in laundry room
- 5'0" x 11'4" Walk-in closet to master suite
- Delete two 24" x 48" P windows at rear
- Add 48" x 40" HSL window to ensuite



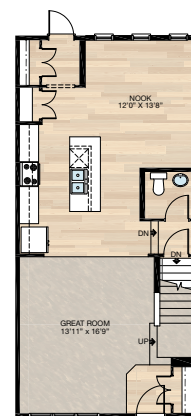
## **SELECT-8** 3 BEDROOMS WITH DUAL MASTER SUITES OPTION

- Additional 80 sq.ft. to upper floor (2'0" x 20'0" Cantilever to both front & rear of upper floor)
- 70" Dual vanity to ensuite
- 5'8" x 5'4" Walk-in closet to master suite
- Laundry closet in lieu of laundry room
- Delete 48" x 48" HSL window from bedroom 2
- Delete two 24" x 48" P windows at rear
- Add 24" x 48" VSL window to bedroom 2 bathroom
- Add three 30" x 60" VSL/P/P window to bedroom 2



## **SELECT-9** FRONT GREAT ROOM OPTION

- Delete 60" x 24" P window from original nook location
- Additional 36" upper & lower cabinet to kitchen
- Additional 18" of kitchen island with 2-sided eating bar



Trico Homes is a local home builder, with new single and multi-family homes for sale in Calgary, Okotoks, Chestermere, Cochrane, and Airdrie. Offering a great selection of starter, move-up and semi-estate models in numerous communities, you'll find the house that's just right for you! Look for this model and many others in Beacon Heights in Sherwood, Belmont, Bridgeport, Carrington, Chelsea, Coach Ridge, Cornerbrook, Cranston's Riverstone, Crestmont, D'Arcy, Evanston, Heritage Hills, Hillcrest, Lakeview, Legacy, Legacy Commons Townhomes, Midtown, Nolan Hill, Pine Creek, Redstone, Riviera, Seton, Sirocco, Unity in Seton Townhomes, Verona Townhomes & Viridian Condos in Sage Hill, Wentworth Pointe Townhomes and Wolf Willow.



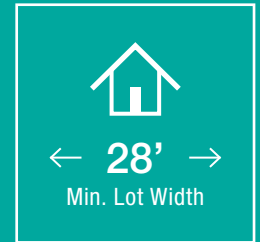
Renderings are artist's conceptions only and may vary by community and lot selection. Prices, floorplans, specifications and dimensions are approximate and are subject to change without notice. E.O.E. © All rights reserved, including the right of reproduction in the whole or in part without the permission of Trico Homes.

Plan updated as of Aug 8, 2018



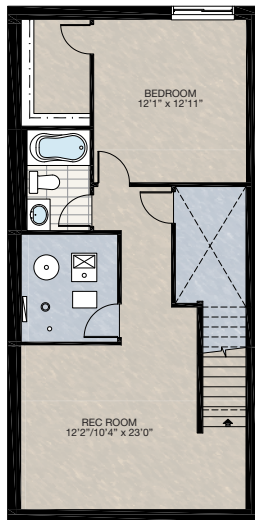
tricohomes.com

# FEATURED McKENZIE OPTIONS



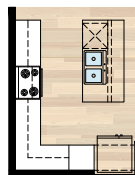
## ☐ SELECT-10 BASEMENT DEVELOPMENT OPTION

- 578 Sq.Ft. of developed area
- Includes finished basement stairwell
- Delete 2'8" passage door top of stairwell
- Add one riser to stairwell for 9'0" basement ceiling (8'9" headroom clearance)



## ☐ SELECT-11 PANTRY OPTION

- Delete pantry & wire shelving
- Add 24" cabinet pantry
- Add 2' x 6' wall next to fridge for relocating light switch



## ☐ SELECT-12 DEN WITH LARGER KITCHEN OPTION

- Reduced mudroom & closet
- Reduced den 2'0"
- Additional 18" length to kitchen island
- Additional 24" upper & lower cabinetry to kitchen

