
 3 Bedroom

 2½ Bathrooms

 Double Garage

THE HUDSON

2131 SQ.FT.

☐ Elements Specification

☐ Elite Specification

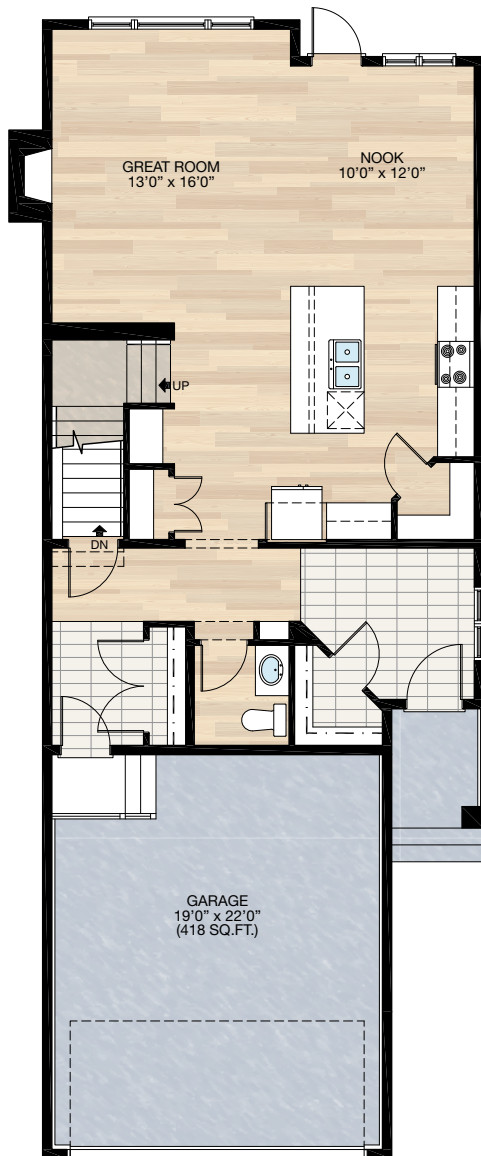
☐ Elite Plus Specification



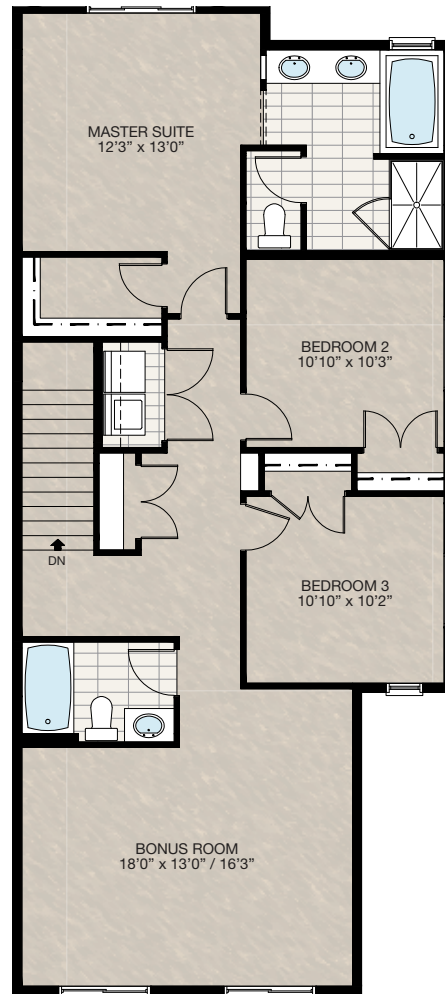
Trico Homes™
The Heart of Homebuilding®

STANDARD PLAN

THE
HUDSON
2131 SQ.FT.



MAIN
937 SQ.FT.



UPPER
1194 SQ.FT.

SOLID CORE PLANK	DECK	CARPET	CONCRETE	TILE	LAMINATE	LINO
---------------------	------	--------	----------	------	----------	------

FEATURED OPTIONS

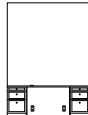
← 32' →
Min. Lot Width

SELECT-1 POCKET OFFICE BUILT-IN DESK DETAIL OPTION

- Only available with **SELECT-3** option

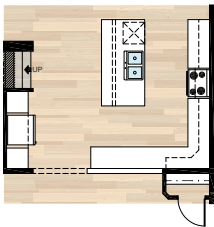


Floorplan

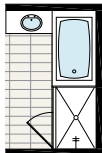


Elevation

SELECT-4 KITCHEN OPTION

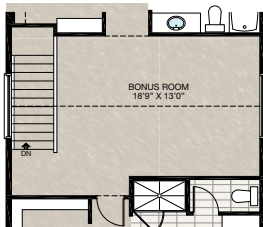


SELECT-6 60" x 42" TILE & GLASS SHOWER OPTION



SELECT-9 BONUS ROOM RAISED VAULTED CEILING OPTION

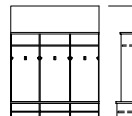
- This option is available only with **SELECT-8**
- Only selected elevation is available with this option
- Two attic access will be required with this option



SELECT-2 BUILT-IN MUDROOM LOCKERS OPTION



Floorplan

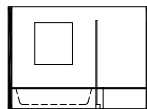
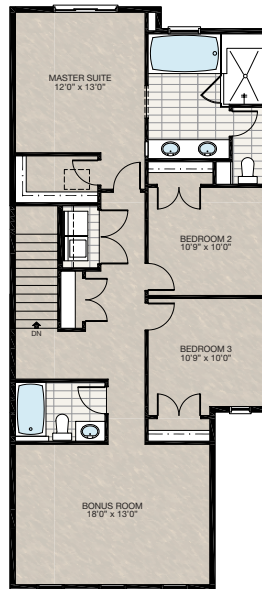


Elevation

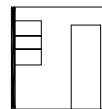
Section

SELECT-5 ENSUITE OPTION

- Relocate secondary bedroom closets & shift bedrooms toward bonus room



Shower/tub detail



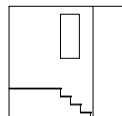
Water closet
shelving detail

SELECT-10 STAIRWELL WALL CUT-OUT OPTION

- Includes puck light & switch



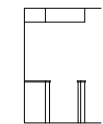
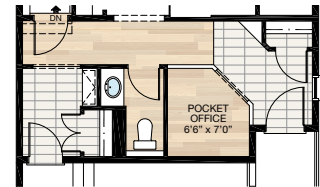
Floorplan



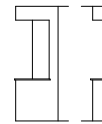
Elevation

SELECT-3 POCKET OFFICE OPTION

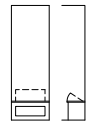
- Delete one 24" x 60" VSL from front foyer
- Add MDF bench to mudroom



Pocket office
stubwall/DBH detail



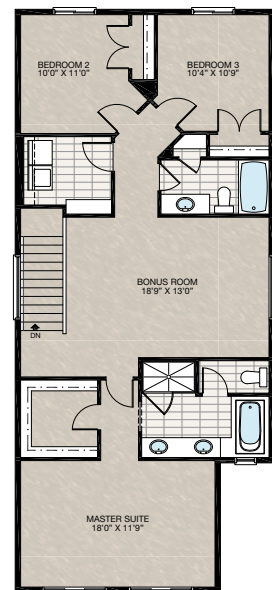
Entry
niche detail



Mudroom
bench detail

SELECT-8 UPPER FLOOR OPTION 1 (WITH FRONT MASTER SUITE)

- Additional 42 sq.ft. to upper floor (4'6" cantilever over front entry at ensuite & 2' cantilever at bedroom 3)
- Delete standard rear windows 72" x 48" XOP & 30" x 40" P
- Add 72" x 24" P window to upper floor stairwell
- Add 72" x 24" P bonus room



SOLID CORE
PLANK

DECK

CARPET

CONCRETE

TILE

LAMINATE

LINO

tricohomes.com

FEATURED OPTIONS

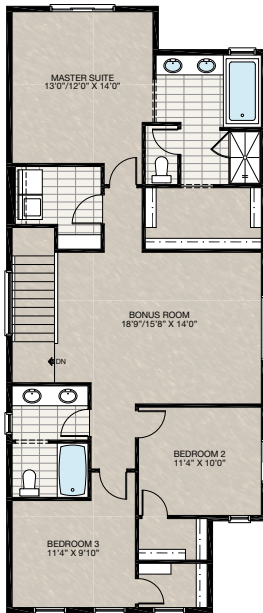
THE
HUDSON
2131 SQ.FT.

SELECT-11

UPPER FLOOR OPTION 2 (WITH WALK-IN CLOSET TO SECONDARY BEDROOMS)

Please note only selected elevation is available with this option

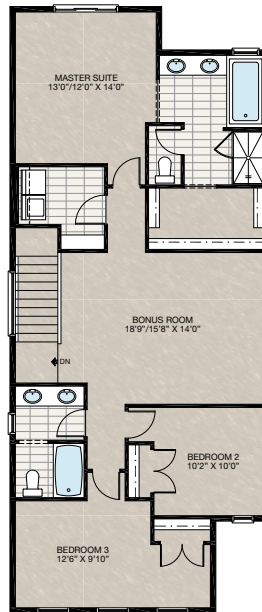
- Additional 68 sq.ft. to upper floor
- 2' extension to master suite cantilever over main floor
- Bedroom 2 extended over front porch 8' (please note porch extension may apply to selected elevation)
- Delete 48" x 48" HSL window
- Add 72" x 24" P window to upper floor stairwell
- Add 72" x 24" P window to bonus room
- Add 24" x 36" P window to main bath



SELECT-12

UPPER FLOOR OPTION 3 (WITH STANDARD CLOSET TO SECONDARY BEDROOMS)

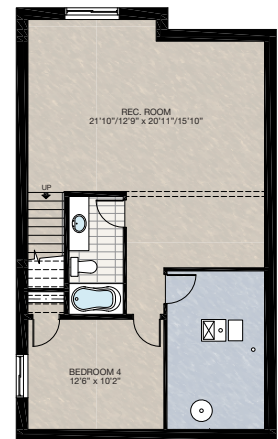
- Additional 68 sq.ft. to upper floor
- 2' extension to master suite cantilever over main floor
- Bedroom 2 extended over front porch 8' (please note porch extension may apply to selected elevation)
- Delete 48" x 48" HSL window
- Add 72" x 24" P window to upper floor stairwell
- Add 72" x 24" P window to bonus room
- Add 24" x 36" P window to main bath



SELECT-13

BASEMENT DEVELOPMENT OPTION

- Additional 682 sq.ft. to finished area
- Includes 9' basement and basement stairwell development
- 60" x 24" Windows changed to 60" x 36"



Trico Homes is a local home builder, with new single and multi-family homes for sale in Calgary, Okotoks, Chestermere, Cochrane, and Airdrie. Offering a great selection of starter, move-up and semi-estate models in numerous communities, you'll find the house that's just right for you! Look for this model and many others in Beacon Heights in Sherwood, Belmont, Bridgeport, Carrington, Chelsea, Coach Ridge, Cornerbrook, Cranston's Riverstone, Crestmont, D'Arcy, Evanston, Heritage Hills, Hillcrest, Lakeview, Legacy, Legacy Commons Townhomes, Midtown, Nolan Hill, Pine Creek, Redstone, Riviera, Seton, Sirocco, Unity in Seton Townhomes, Verona Townhomes & Viridian Condos in Sage Hill, Wentworth Pointe Townhomes and Wolf Willow.



Renderings are artist's conceptions only and may vary by community and lot selection. Prices, floorplans, specifications and dimensions are approximate and are subject to change without notice. E.O.E. © All rights reserved, including the right if reproduction in the whole or in part without the permission of Trico Homes.

Plan updated as of Aug 8, 2018



tricohomes.com