
 3 Bedrooms

 2½ Bathrooms

 Double Garage

THE FAIRMONT

2251 SQ.FT.

☐ Elements Specification

☐ Elite Specification

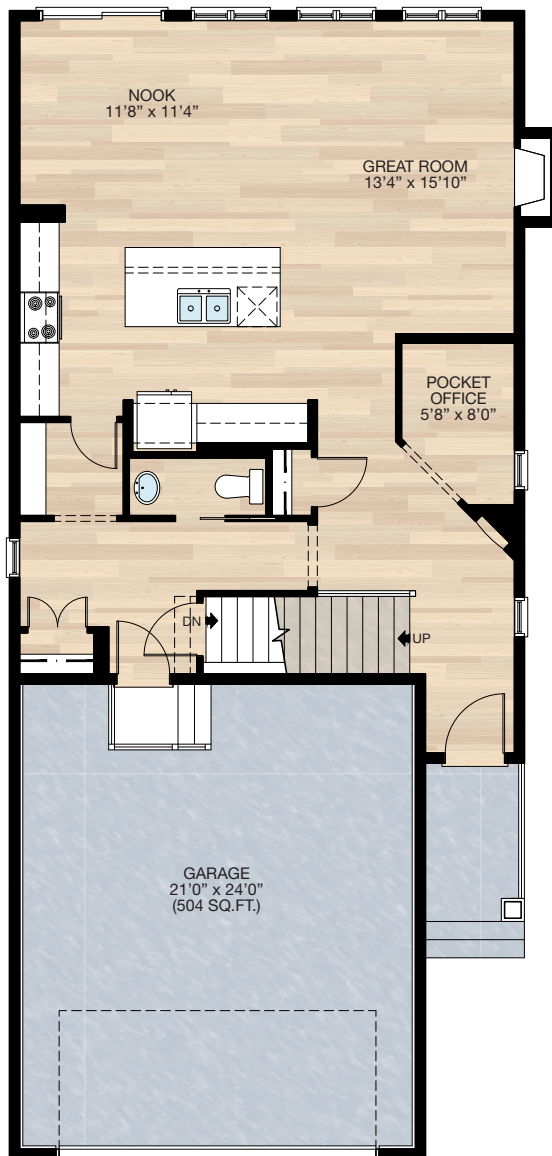
☐ Elite Plus Specification



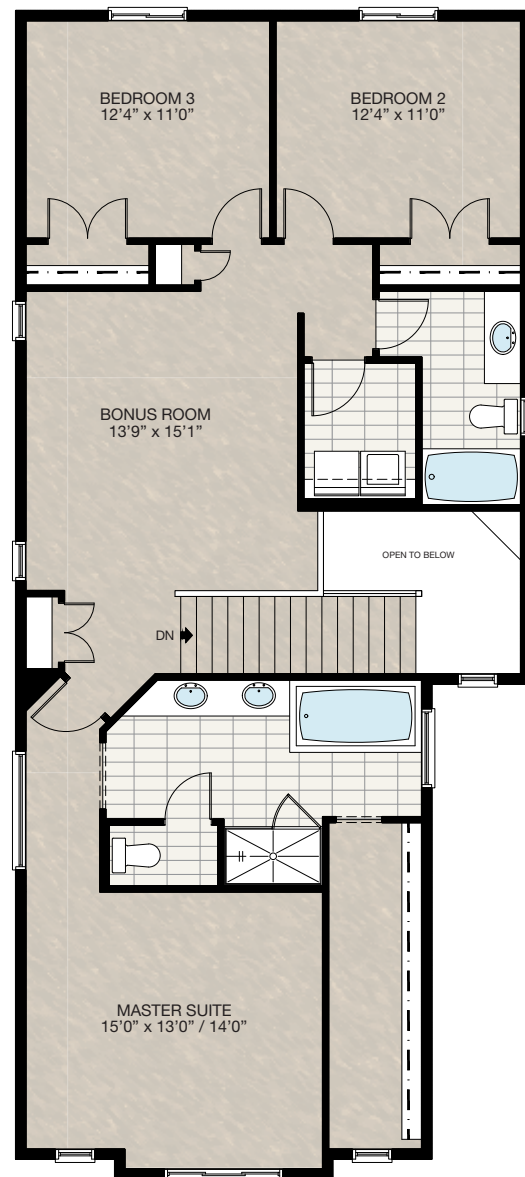
Trico Homes™
The Heart of Homebuilding®

STANDARD PLAN

THE
FAIRMONT
2251 SQ.FT.



MAIN
915 SQ.FT.



UPPER
1336 SQ.FT.

SOLID CORE
PLANK

DECK

CARPET

CONCRETE

TILE

LAMINATE

LINO

tricohomes.com

FEATURED OPTIONS

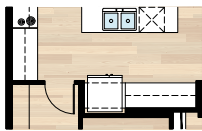
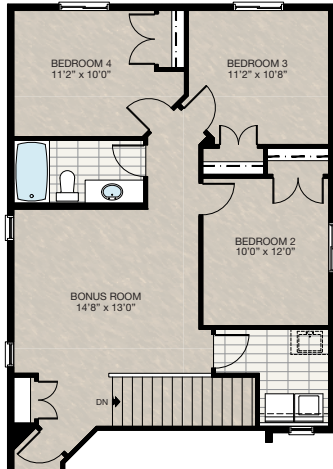


SELECT-1 4TH BEDROOM OPTION

- Adds 66 sq.ft. to upper floor
- Open to below filled in

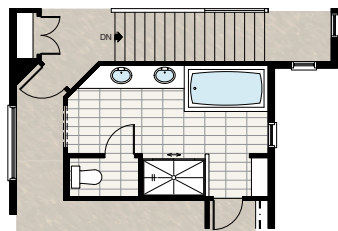
MAIN FLOOR CHANGES

- Pantry door & kitchen cabinetry has changed location, no changes to size of the cabinets



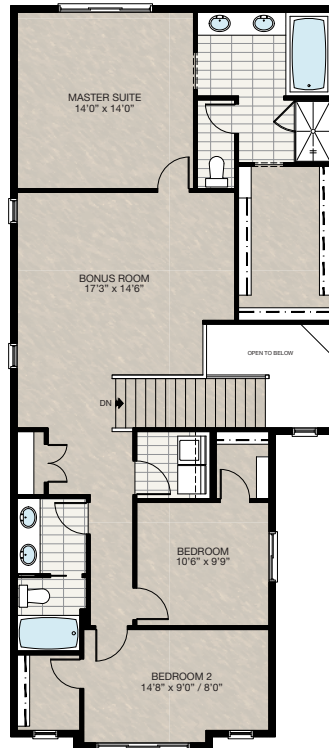
SELECT-10 ENSUITE OPTION

- Delete fiberglass shower
- Add 60" x 36" fiberglass base, tiled walls, with 5mm partial wall & sliding door
- Add MDF shelves
- Windows will change based on elevation



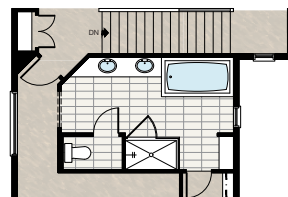
SELECT-9 UPPER FLOOR OPTION

- Redesign upper floor with master bedroom in the back
- Windows may change based on elevation



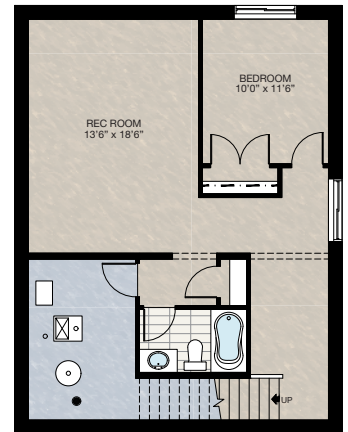
SELECT-7 ENSUITE OPTION

- Delete fiberglass shower
- Add 60" x 36" tile shower with 10mm glass walls & door
- Add MDF shelves
- Windows will change based on elevation



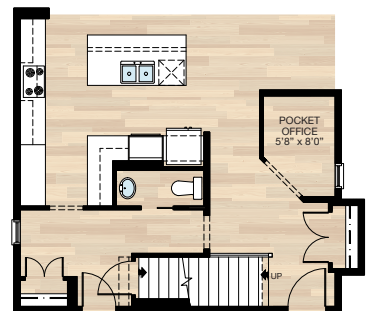
SELECT-3 BASEMENT DEVELOPMENT OPTION

- Additional 645 sq.ft. of developed area
- Finished bathroom
- Add recreation room, linen closet & bedroom
- Basement windows as shown
- Finished basement stairwell
- Delete 2'8" door top of stairwell
- Add extra riser to stairwell for 9' basement ceiling with 8'9" headroom
- 60" x 24" Windows changed to 60" x 36"



SELECT-8 KITCHEN OPTION

- Adds 11 sq.ft.
- Cantilever main closet, delete closet across from pocket office
- Shift over half bath
- Add additional kitchen cabinets including cabinet pantry
- Includes wall oven, microwave, chimney hoodfan, electric cooktop & additional downlight in kitchen



SOLID CORE
PLANK

DECK

CARPET

CONCRETE

TILE

LAMINATE

LINO

tricohomes.com

PHOTO GALLERY

THE
FAIRMONT
2229 SQ.FT.



Trico Homes is a local home builder, with new single and multi-family homes for sale in Calgary, Okotoks, Chestermere, Cochrane, and Airdrie. Offering a great selection of starter, move-up and semi-estate models in numerous communities, you'll find the house that's just right for you! Look for this model and many others in Beacon Heights in Sherwood, Belmont, Bridgeport, Carrington, Chelsea, Coach Ridge, Cornerbrook, Cranston's Riverstone, Crestmont, D'Arcy, Evanston, Heritage Hills, Hillcrest, Lakeview, Legacy, Legacy Commons Townhomes, Midtown, Nolan Hill, Pine Creek, Redstone, Riviera, Seton, Sirocco, Unity in Seton Townhomes, Verona Townhomes & Viridian Condos in Sage Hill, Wentworth Pointe Townhomes and Wolf Willow.



Renderings are artist's conceptions only and may vary by community and lot selection. Prices, floorplans, specifications and dimensions are approximate and are subject to change without notice. E.O.E. © All rights reserved, including the right of reproduction in the whole or in part without the permission of Trico Homes.

Plan updated as of Dec 12, 2018

**Trico
Homes™**
The Heart of Homebuilding®



tricohomes.com