

VERONA

TOWNHOMES

RUNDLE

WALK-OUT (MID UNIT 2)

MID UNIT WITH NO CANTILEVER

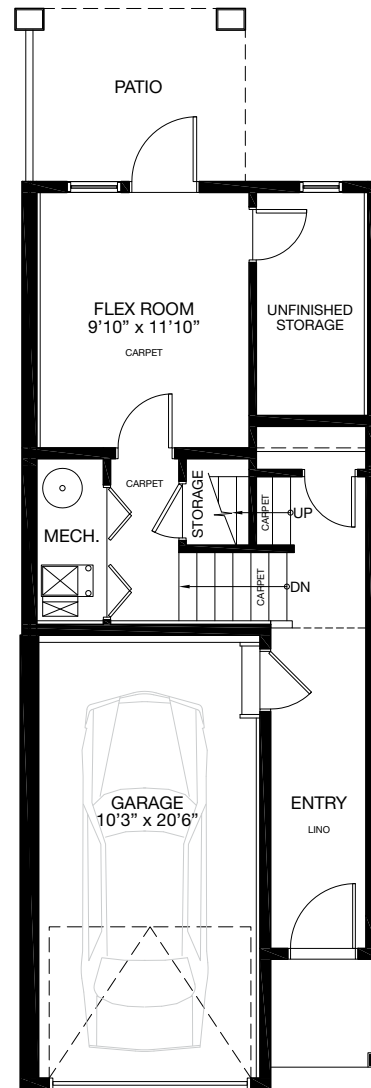
2 
1,565 SQ.FT.



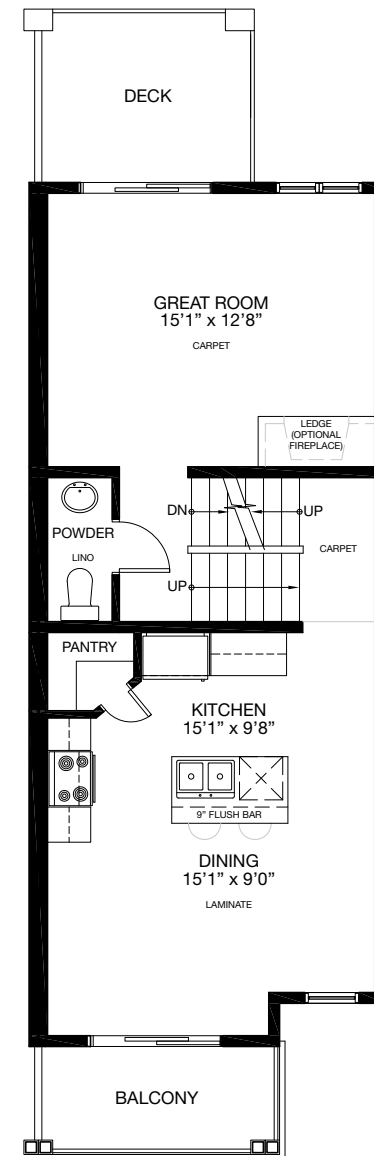
*Floorplan is an artist rendering only and may be subject to change without notice. Builder reserves the right to make modifications and changes to building design, specifications, features and floorplans without notice. Measurements and areas shown are based on pre-construction estimates and are approximate only. E.&O.E.

454 & 456 Sage Hill Grove NW | Calgary AB
Phone: **403.455.3771** | Email: **verona@tricohomes.com**

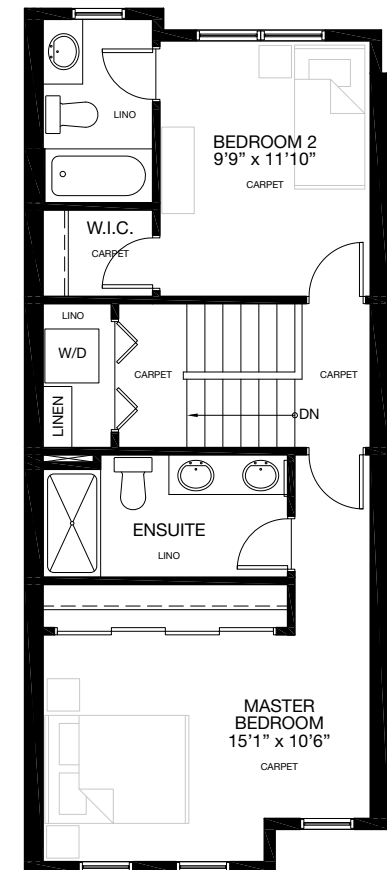
veronatownhomes.ca



ENTRY LEVEL
Finished Area: 315 Sq.Ft.



MAIN FLOOR
Finished Area: 630 Sq.Ft.



UPPER FLOOR
Finished Area: 620 Sq.Ft.

Options On Reverse


VERONA

TOWNHOMES

RUNDLE

WALK-OUT (MID UNIT 2)

MID UNIT WITH NO CANTILEVER
Fully Developed: 1,628 Sq.Ft.

2 

1,565 SQ.FT.

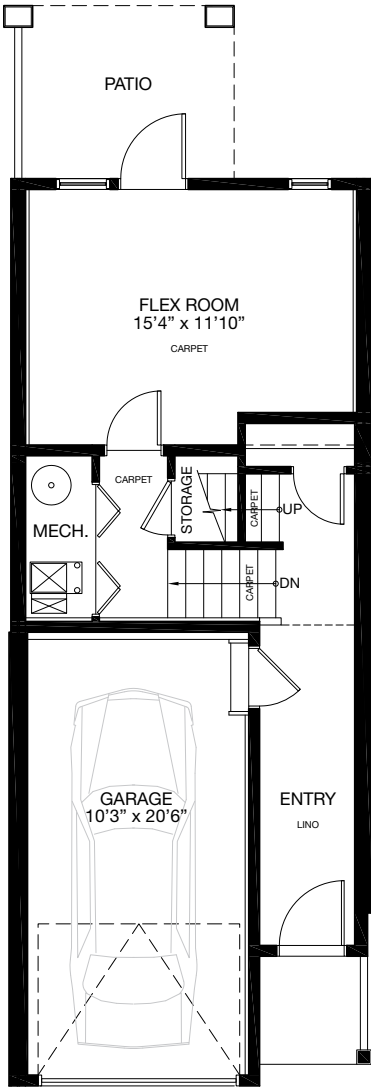


*Floorplan is an artist rendering only and may be subject to change without notice. Builder reserves the right to make modifications and changes to building design, specifications, features and floorplans without notice. Measurements and areas shown are based on pre-construction estimates and are approximate only. E.&O.E.

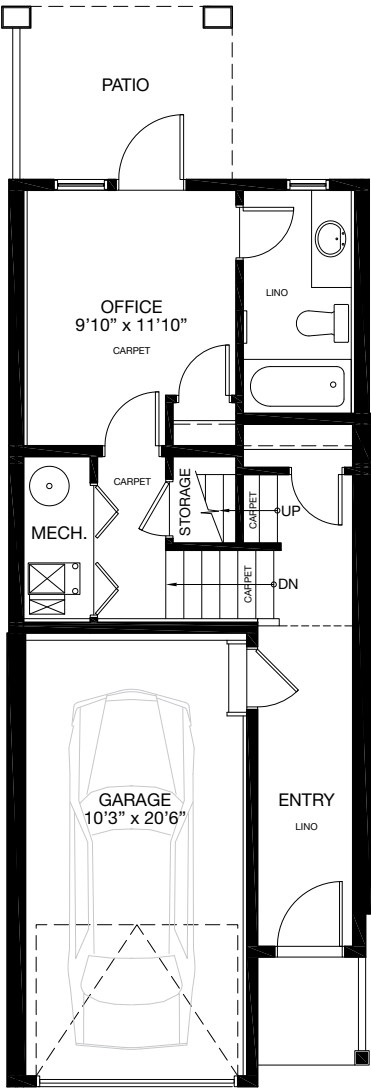
454 & 456 Sage Hill Grove NW | Calgary AB
Phone: 403.455.3771 | Email: verona@tricohomes.com



veronatownhomes.ca



ENTRY LEVEL OPTION 1
Finished Area: 378 Sq.Ft.



ENTRY LEVEL OPTION 2
Finished Area: 378 Sq.Ft.