



← 28' →

Min. Lot Width

 3 Bedrooms

 2½ Bathrooms

THE DELBRIDGE III

1434 SQ.FT.

☐ Elements Specification

☐ Elite Specification

☐ Elite Plus Specification

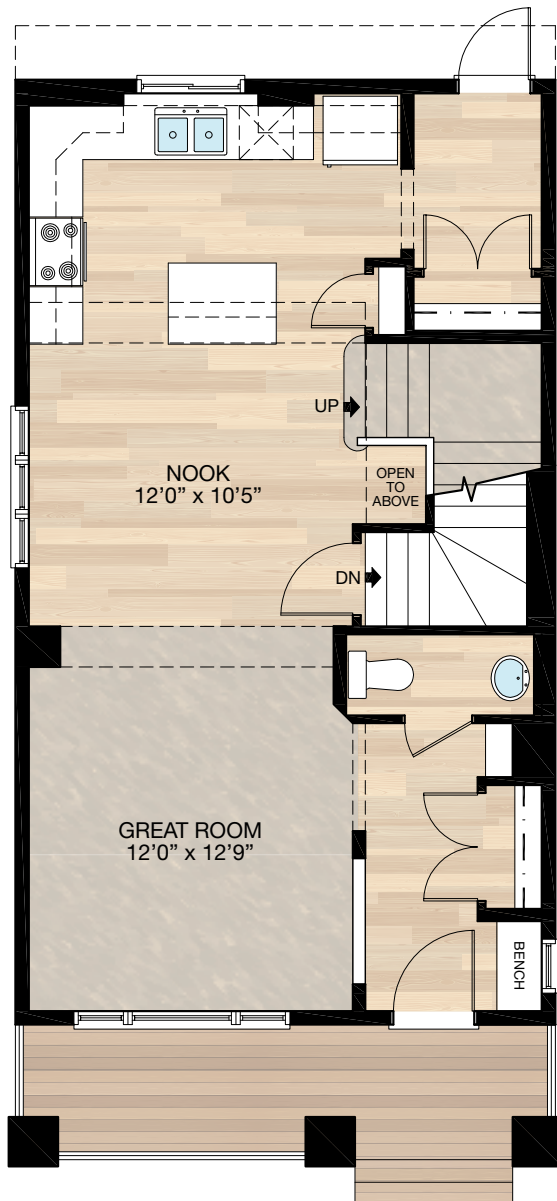


Trico Homes™

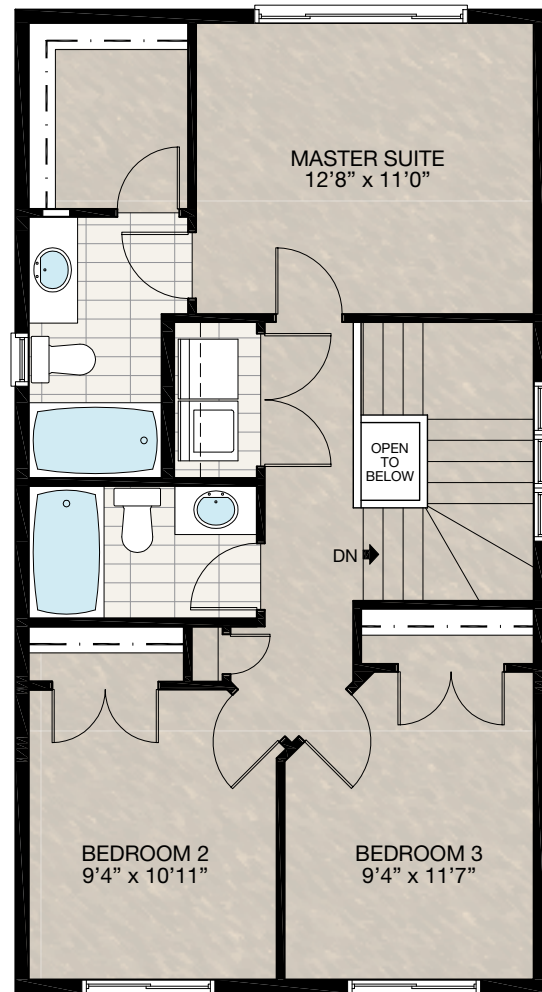
The Heart of Homebuilding®

STANDARD PLAN

THE
DELBRIDGE III
1434 SQ.FT.



MAIN
700 SQ.FT.



UPPER
734 SQ.FT.

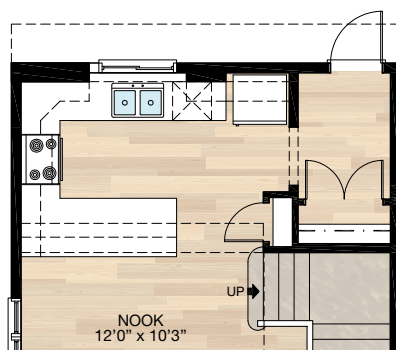
SOLID CORE PLANK	DECK	CARPET	CONCRETE	TILE	LAMINATE	LINO
---------------------	------	--------	----------	------	----------	------

FEATURED OPTIONS



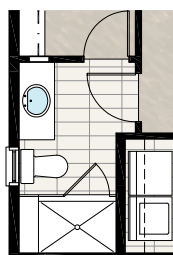
G-1 KITCHEN OPTION

- Layout reconfigured
- Island style kitchen in lieu of galley style

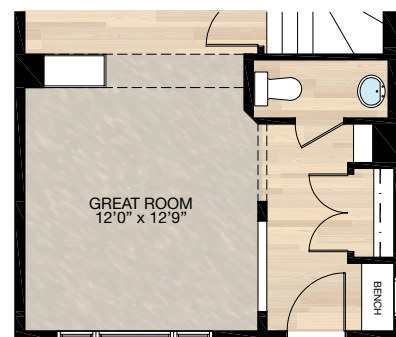


H-1 ENSUITE OPTION

- Delete fibreglass tub/shower unit & adds tile/glass shower with 10mm glass



I-5 THREE-SIDED FIREPLACE OPTION



SOLID CORE
PLANK

DECK

CARPET

CONCRETE

TILE

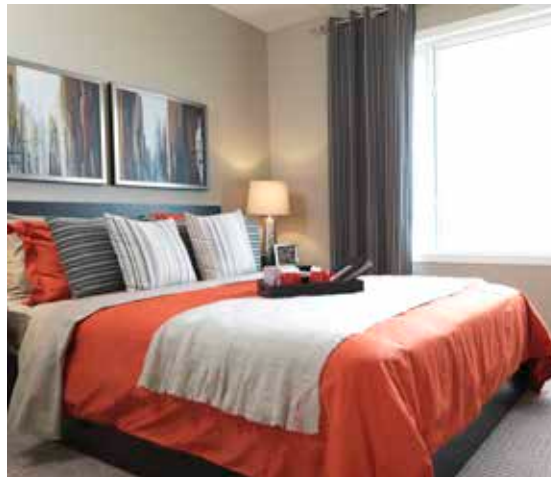
LAMINATE

LINO

tricohomes.com

PHOTO GALLERY

THE
DELBRIDGE III
1434 SQ.FT.



Trico Homes is a local home builder, with new single and multi-family homes for sale in Calgary, Okotoks, Chestermere, Cochrane, and Airdrie. Offering a great selection of starter, move-up and semi-estate models in numerous communities, you'll find the house that's just right for you! Look for this model and many others in Beacon Heights in Sherwood, Belmont, Bridgeport, Carrington, Chelsea, Coach Ridge, Cornerbrook, Cranston's Riverstone, Crestmont, D'Arcy, Evanston, Heritage Hills, Hillcrest, Lakeview, Legacy, Legacy Commons Townhomes, Midtown, Nolan Hill, Pine Creek, Redstone, Riviera, Seton, Sirocco, Unity in Seton Townhomes, Verona Townhomes & Viridian Condos in Sage Hill, Wentworth Pointe Townhomes and Wolf Willow.



Renderings are artist's conceptions only and may vary by community and lot selection. Prices, floorplans, specifications and dimensions are approximate and are subject to change without notice. E.O.E. © All rights reserved, including the right of reproduction in the whole or in part without the permission of Trico Homes.

Plan updated as of Aug 8, 2018



tricohomes.com