

3 Bedrooms

2½ Bathrooms

Double Garage

THE KENNEDY II

2448 SQ.FT.

☐ Elements Specification

☐ Elite Specification

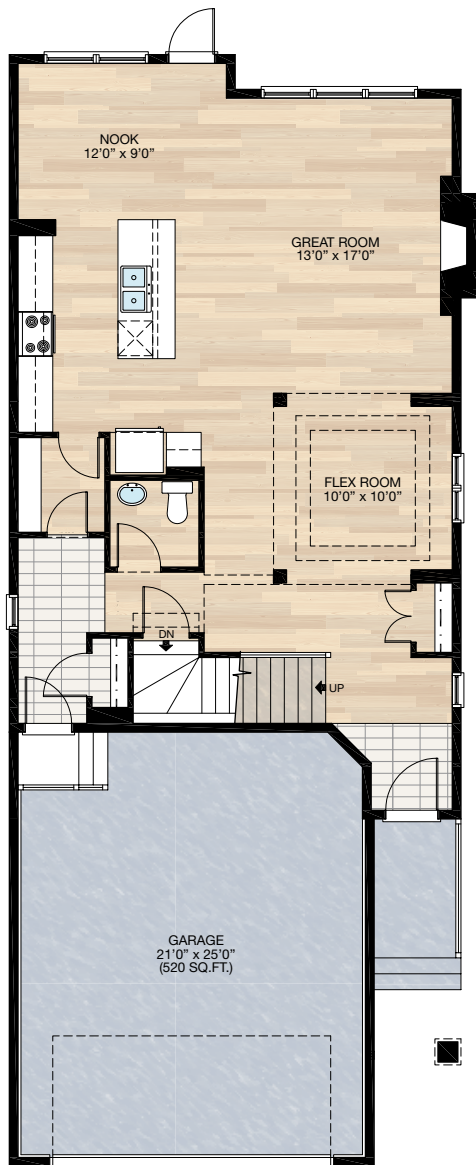
☐ Elite Plus Specification



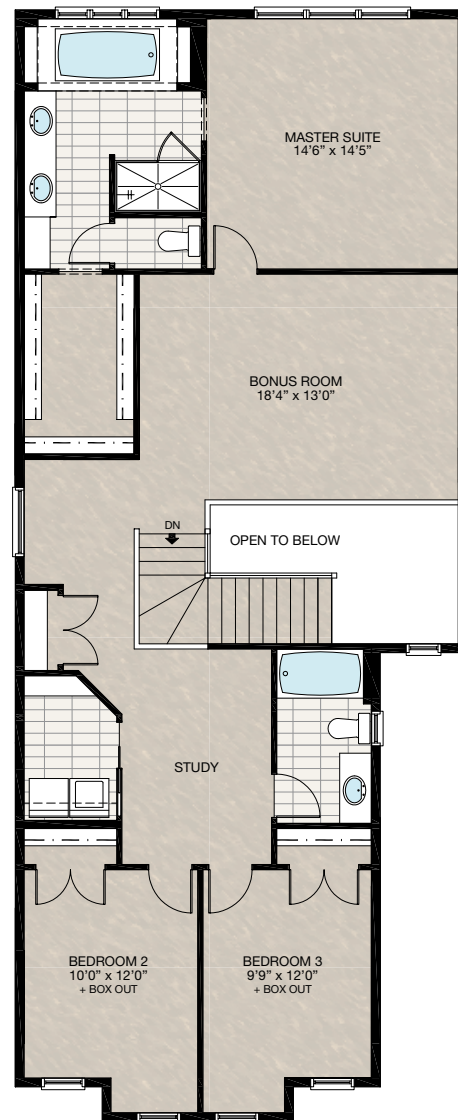
Trico Homes™
The Heart of Homebuilding®

STANDARD PLAN

THE
KENNEDY II
2448 SQ.FT.



MAIN
1025 SQ.FT.



UPPER
1423 SQ.FT.

SOLID CORE PLANK	DECK	CARPET	CONCRETE	TILE	LAMINATE	LINO
---------------------	------	--------	----------	------	----------	------

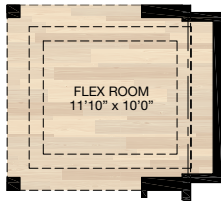
FEATURED OPTIONS



☐ SELECT-1 FLEX ROOM EXTENSION OPTION

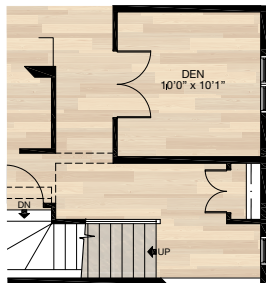
- 10'0" x 1'10" Cantilever added - light recentered
- Additional 18 sq.ft. to main floor
- Foundation not included

Note: Basement window below may require relocation or be deleted. Subject to conditions.



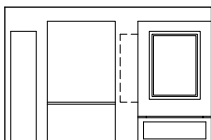
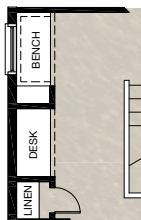
☐ SELECT-2 DEN OPTION

- Flex room closed in



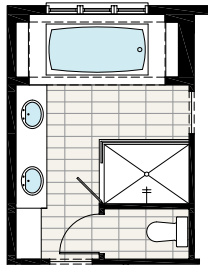
☐ SELECT-3 BENCH/COMPUTER SHELF OPTION

- Smaller linen closet



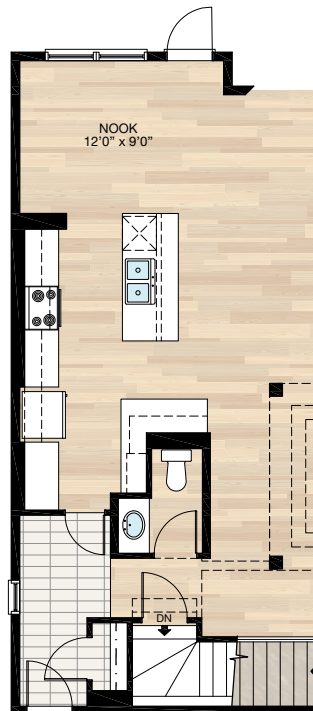
☐ SELECT-4 ENSUITE OPTION

- Delete standard 60" x 42" fiberglass shower
- Add 60" x 42" tile & glass shower with tile base & 10mm glass



☐ SELECT-6 KITCHEN OPTION

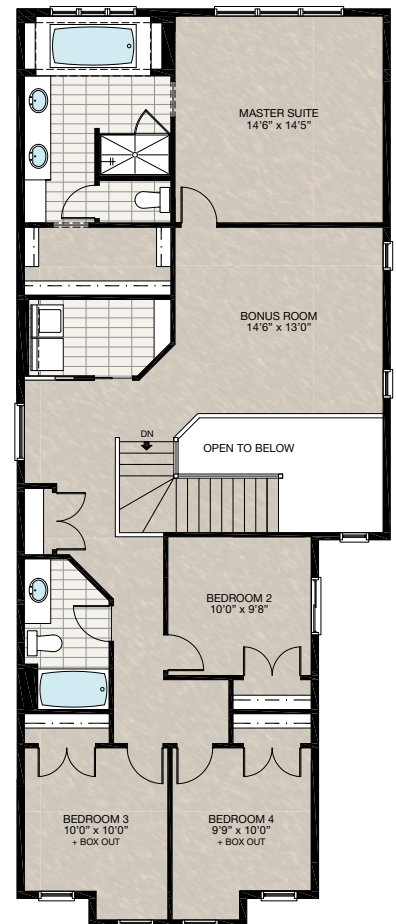
- Pantry/island/mudroom & 1/2 bath reworked
- Add 48" cabinet pantry
- Delete wire shelves pantry
- Add 2' x 4' wall behind cabinetry for fridge recess
- Extend mechanical space at the end of cabinet by 3 1/2"
- Move island 3 1/2" towards great room



☐ SELECT-5 ENSUITE OPTION

- Additional 1 sq.ft. (due to angled 1/2 wall top of stair over the open to below area)

Note: Windows & front box-out varies with elevation upper floor square footage dependant on elevation



SOLID CORE
PLANK

DECK

CARPET

CONCRETE

TILE

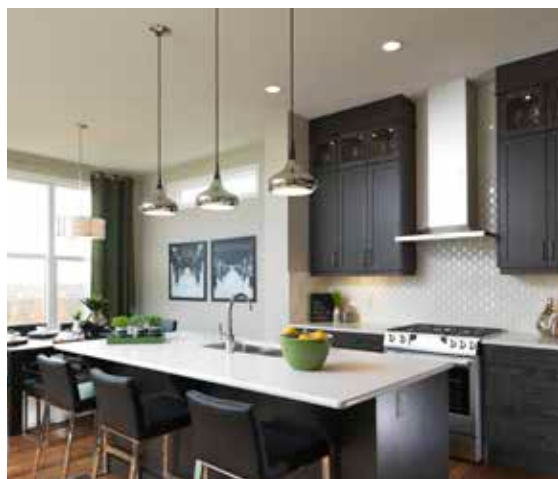
LAMINATE

LINO

tricohomes.com

PHOTO GALLERY

THE
KENNEDY II
2448 SQ.FT.



Trico Homes is a local home builder, with new single and multi-family homes for sale in Calgary, Okotoks, Chestermere, Cochrane, and Airdrie. Offering a great selection of starter, move-up and semi-estate models in numerous communities, you'll find the house that's just right for you! Look for this model and many others in Beacon Heights in Sherwood, Belmont, Bridgeport, Carrington, Chelsea, Coach Ridge, Cornerbrook, Cranston's Riverstone, Crestmont, D'Arcy, Evanston, Heritage Hills, Hillcrest, Lakeview, Legacy, Legacy Commons Townhomes, Midtown, Nolan Hill, Pine Creek, Redstone, Riviera, Seton, Sirocco, Unity in Seton Townhomes, Verona Townhomes & Viridian Condos in Sage Hill, Wentworth Pointe Townhomes and Wolf Willow.



Renderings are artist's conceptions only and may vary by community and lot selection. Prices, floorplans, specifications and dimensions are approximate and are subject to change without notice. E.O.E. © All rights reserved, including the right of reproduction in the whole or in part without the permission of Trico Homes.

Plan updated as of July 17, 2018

**Trico
Homes™**
The Heart of Homebuilding®



tricohomes.com