
 3 Bedrooms

 2½ Bathrooms

 Double Garage

THE PRINCETON

2190 SQ.FT.

☐ Elements Specification

☐ Elite Specification

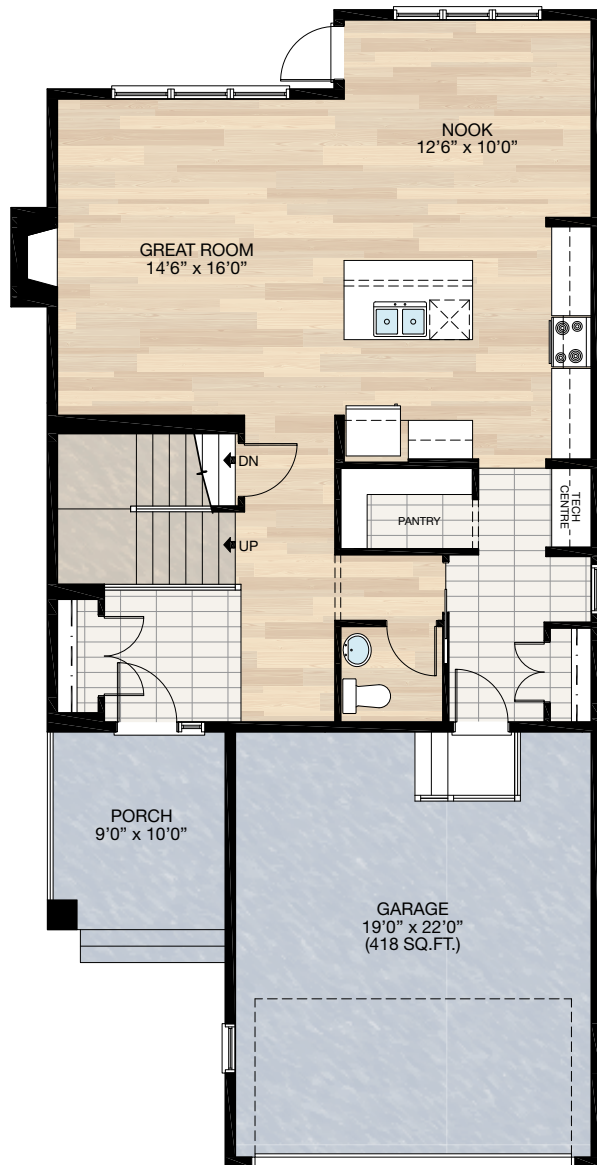
☐ Elite Plus Specification



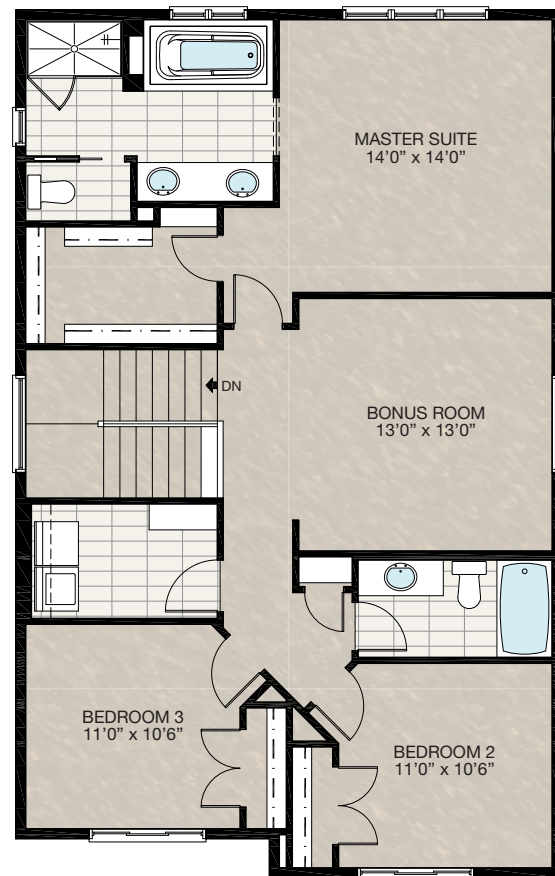
Trico Homes™
The Heart of Homebuilding®

STANDARD PLAN

THE
PRINCETON
2190 SQ.FT.



MAIN
973 SQ.FT.



UPPER
1217 SQ.FT.

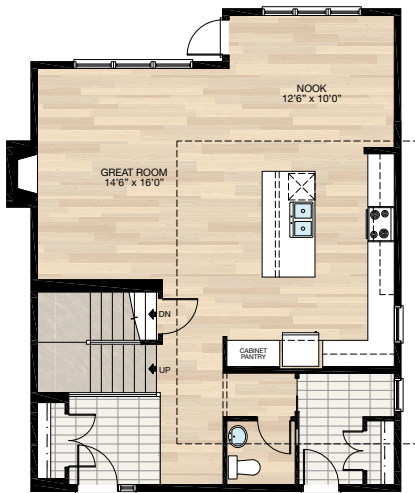
SOLID CORE PLANK	DECK	CARPET	CONCRETE	TILE	LAMINATE	LINO
---------------------	------	--------	----------	------	----------	------

FEATURED OPTIONS



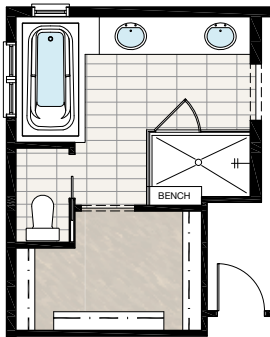
SELECT-1 KITCHEN OPTION

- Change island orientation & size from 6'6" x 4'0" to 8'0" x 4'0"
- Add 4'0" cabinet pantry
- Additional 2'6" of lower cabinetry & 1'0" of upper cabinetry
- Delete tech centre/butler pantry & walk-in pantry
- Add 36" x 40" window
- Delete one pot light & add three pendant lights
- Post is deleted & flush beam is extended



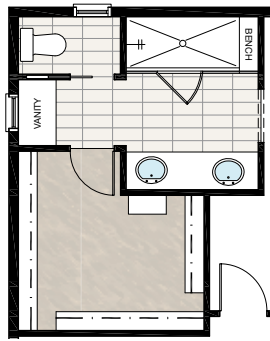
SELECT-2 ENSUITE OPTION 1

- Vanity increased 12"
- Tile & glass 42" x 66" shower with bench
- Walk-in closet entrance relocated to ensuite
- Add shower pot light



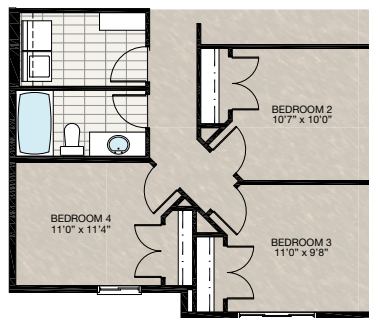
SELECT-3 ENSUITE OPTION 2

- 42" Vanity added
- Two 24" x 40" windows reduced to one 24" x 40"
- Tile & glass 84" x 36" shower with bench
- Walk-in closet increased & entrance relocated to ensuite
- Add shower pot light



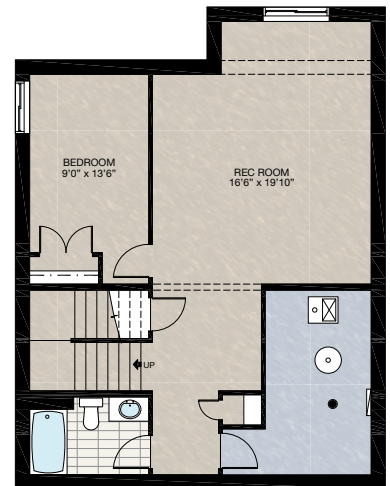
SELECT-4 FOUR BEDROOM OPTION

- Add fourth bedroom & 48" x 48" window
- Extend front of house 4' = 112 sq.ft.



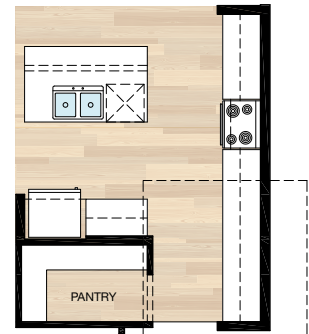
SELECT-5 BASEMENT DEVELOPMENT OPTION

- 672 Sq.Ft. of developed area
- Add extra riser to stairwell for 9'0" basement ceiling with 8'9" headroom clearance
- Include finished basement stairwell
- Delete 2'8" door top of stairwell
- 60" x 24" Window changed to 60" x 36"



SELECT-6 EXTENDED KITCHEN OPTION

- Delete wall separating kitchen & tech centre
- Replace tech centre with kitchen upper & lower cabinets
- Extend hardwood through pantry to edge of mudroom



SOLID CORE
PLANK

DECK

CARPET

CONCRETE

TILE

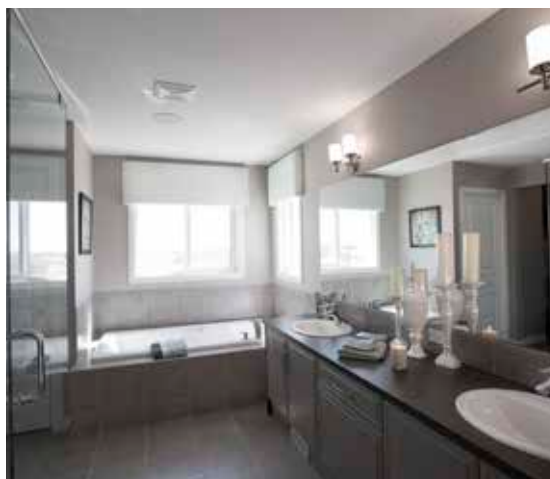
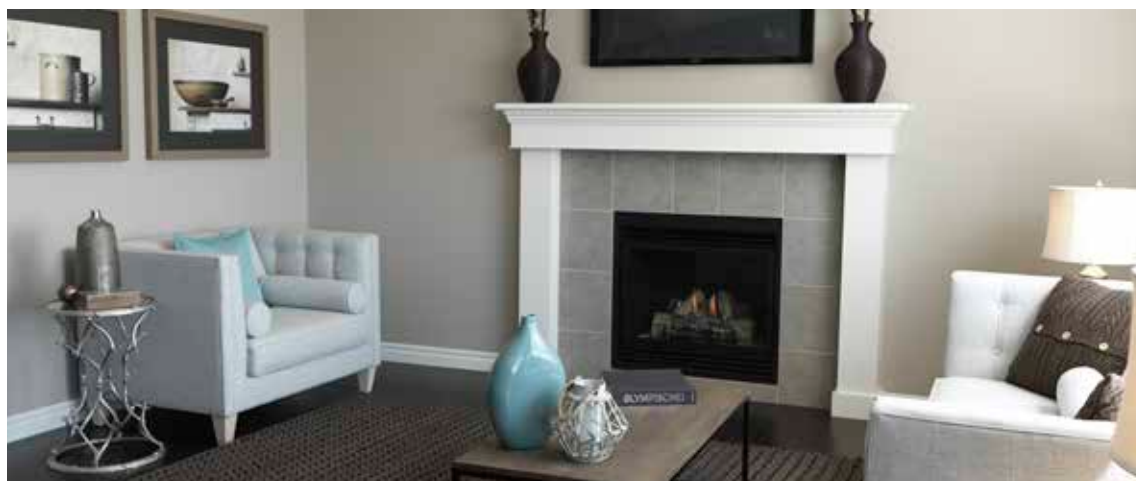
LAMINATE

LINO

tricohomes.com

PHOTO GALLERY

THE
PRINCETON
2190 SQ.FT.



Trico Homes is a local home builder, with new single and multi-family homes for sale in Calgary, Okotoks, Chestermere, Cochrane, and Airdrie. Offering a great selection of starter, move-up and semi-estate models in numerous communities, you'll find the house that's just right for you! Look for this model and many others in Beacon Heights in Sherwood, Belmont, Bridgeport, Carrington, Chelsea, Coach Ridge, Cornerbrook, Cranston's Riverstone, Crestmont, D'Arcy, Evanston, Heritage Hills, Hillcrest, Lakeview, Legacy, Legacy Commons Townhomes, Midtown, Nolan Hill, Pine Creek, Redstone, Riviera, Seton, Sirocco, Unity in Seton Townhomes, Verona Townhomes & Viridian Condos in Sage Hill, Wentworth Pointe Townhomes and Wolf Willow.



Renderings are artist's conceptions only and may vary by community and lot selection. Prices, floorplans, specifications and dimensions are approximate and are subject to change without notice. E.O.E. © All rights reserved, including the right of reproduction in the whole or in part without the permission of Trico Homes.

Plan updated as of Aug 8, 2018

**Trico
Homes™**
The Heart of Homebuilding®



tricohomes.com