
 1 Bedroom

 1½ Bathrooms

 Double Garage

# THE HAWTHORNE

1336 SQ.FT.

☐ Elements Specification

☐ Elite Specification

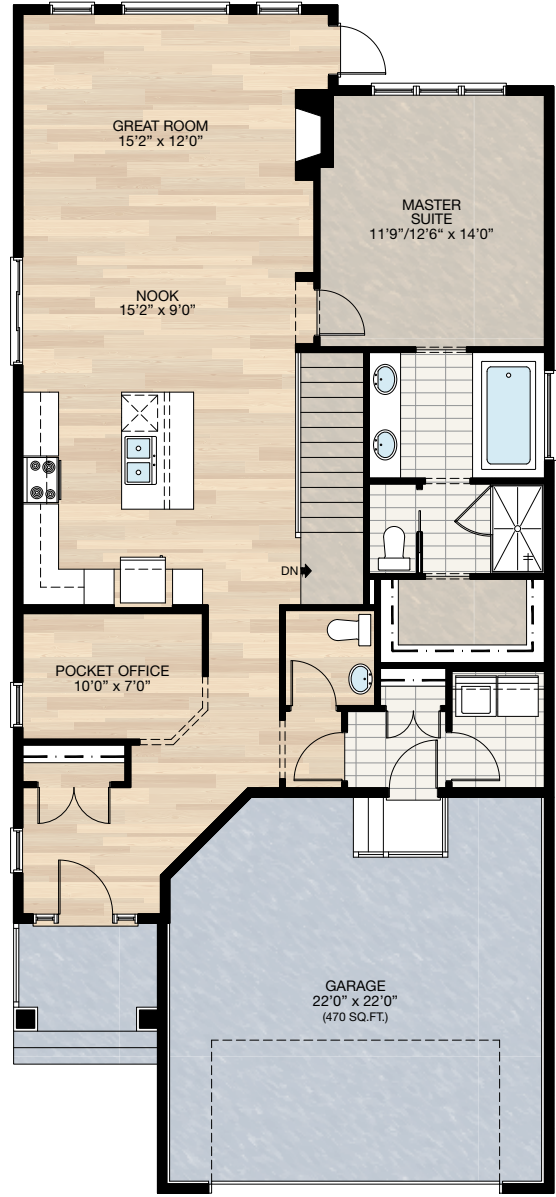
☐ Elite Plus Specification



Trico Homes™  
The Heart of Homebuilding®

# STANDARD PLAN

THE  
HAWTHORNE  
1336 SQ.FT.



**MAIN**  
1336 SQ.FT.

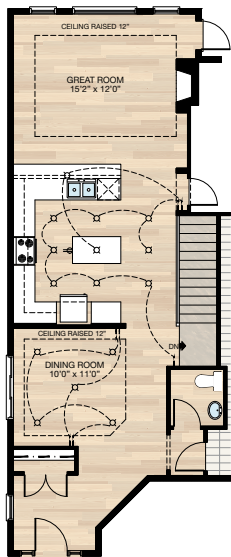
SOLID CORE PLANK	DECK	CARPET	CONCRETE	TILE	LAMINATE	LINO
---------------------	------	--------	----------	------	----------	------

# FEATURED OPTIONS



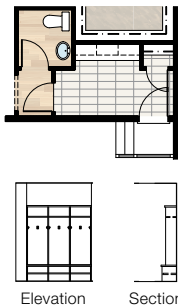
## ☐ **SELECT-1 DINING ROOM OPTION**

- Delete nook and pocket office
- Kitchen is reconfigured and dining room created
- Delete pocket office window and move nook window into dining room
- Add raised ceiling detail to dining room and great room
- Add 5 pot lights



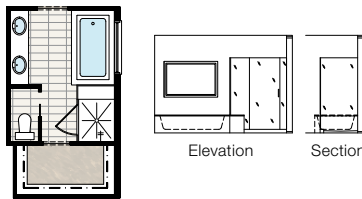
## ☐ **SELECT-4 MUDROOM OPTION**

- Move laundry to basement (near mechanical if no basement development is selected)
- Move door to garage
- Add lockers



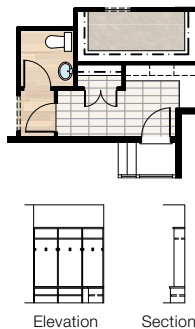
## ☐ **SELECT-2 ENSUITE OPTION**

- Delete wall & DBH between tub & shower
- Delete 60" x 36" fibreglass shower
- Add 63" x 40" tile shower with 10mm glass
- Extend tub deck for bench



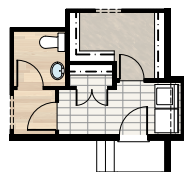
## ☐ **SELECT-5 MUDROOM OPTION 2**

- Add 10' cantilever expanding mudroom & master walk-in closet
- Move laundry to basement (near mechanical if no basement development is selected)
- Move door to garage
- Add lockers



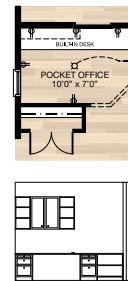
## ☐ **SELECT-7 MUDROOM OPTION 3**

- Add 5' cantilever to mudroom
- Add door from master walk-in closet to mudroom
- Relocate laundry into cantilever
- Move garage entrance door



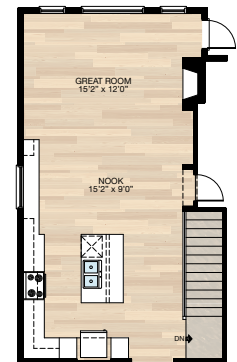
## ☐ **SELECT-3 BUILT-IN DESK OPTION**

- MDF desk & uppers as shown



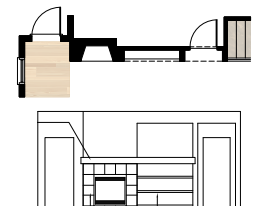
## ☐ **SELECT-6 EXTENDED KITCHEN OPTION**

- Add 9' of 18" lower cabinets & two 1'6" upper cabinets
- Change 72" x 24" nook window to 60" x 40"
- Adjust great room pot lights



## ☐ **SELECT-8 BUILT-IN BOOKCASE OPTION**

- Add bookshelves beside fireplace
- Add dropped bulk head over shelves
- Extend fireplace mantle



SOLID CORE  
PLANK

DECK

CARPET

CONCRETE

TILE

LAMINATE

LINO

tricohomes.com

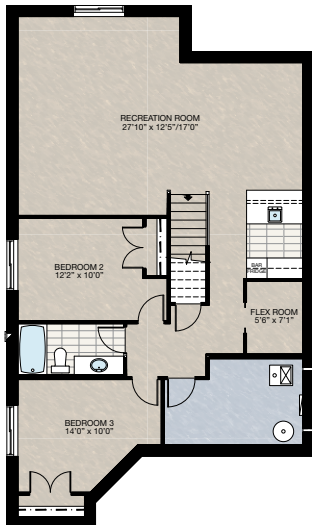
# FEATURED OPTIONS

THE  
**HAWTHORNE**  
1336 SQ.FT.



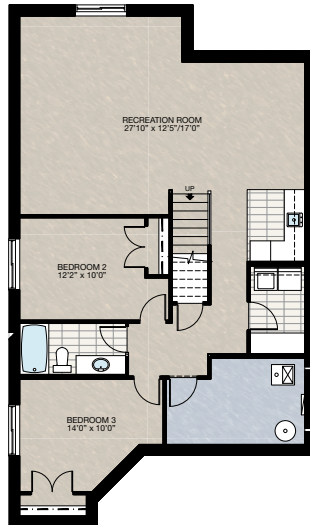
## SELECT-9 BASEMENT DEVELOPMENT OPTION

- Additional 1118 sq.ft. of developed area including two bedrooms, one bathroom, one flex room & a recreation room
- Add 60" x 36" window to bedroom 3
- Add 11' of lower cabinets and 5'6" of upper cabinets
- Includes railing to base of stairs
- 60" x 24" Windows changed to 60" x 36"



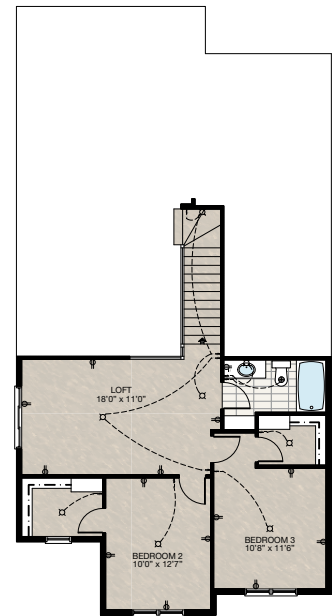
## SELECT-10 BASEMENT DEVELOPMENT OPTION 2

- Additional 1118 sq.ft. of developed area including two bedrooms, one bathroom, laundry room & a recreation room
- Add 60" x 36" window to bedroom 3
- Add 8'4" of lower cabinets & 7' of upper cabinets
- Includes railing to base of stairs
- 60" x 24" Windows changed to 60" x 36"



## SELECT-11 UPPER FLOOR OPTION

- Additional 723 sq.ft. of developed area including two bedrooms, one bathroom & loft



Trico Homes is a local home builder, with new single and multi-family homes for sale in Calgary, Okotoks, Chestermere, Cochrane, and Airdrie. Offering a great selection of starter, move-up and semi-estate models in numerous communities, you'll find the house that's just right for you! Look for this model and many others in Beacon Heights in Sherwood, Belmont, Bridgeport, Carrington, Chelsea, Coach Ridge, Cornerbrook, Cranston's Riverstone, Crestmont, D'Arcy, Evanston, Heritage Hills, Hillcrest, Lakeview, Legacy, Legacy Commons Townhomes, Midtown, Nolan Hill, Pine Creek, Redstone, Riviera, Seton, Sirocco, Unity in Seton Townhomes, Verona Townhomes & Viridian Condos in Sage Hill, Wentworth Pointe Townhomes and Wolf Willow.



Renderings are artist's conceptions only and may vary by community and lot selection. Prices, floorplans, specifications and dimensions are approximate and are subject to change without notice. E.O.E. © All rights reserved, including the right if reproduction in the whole or in part without the permission of Trico Homes.

Plan updated as of Aug 8, 2018



tricohomes.com