

- 3 Bedrooms
- 2½ Bathrooms
- Double Garage

# THE WESTCHESTER

2402 SQ.FT.

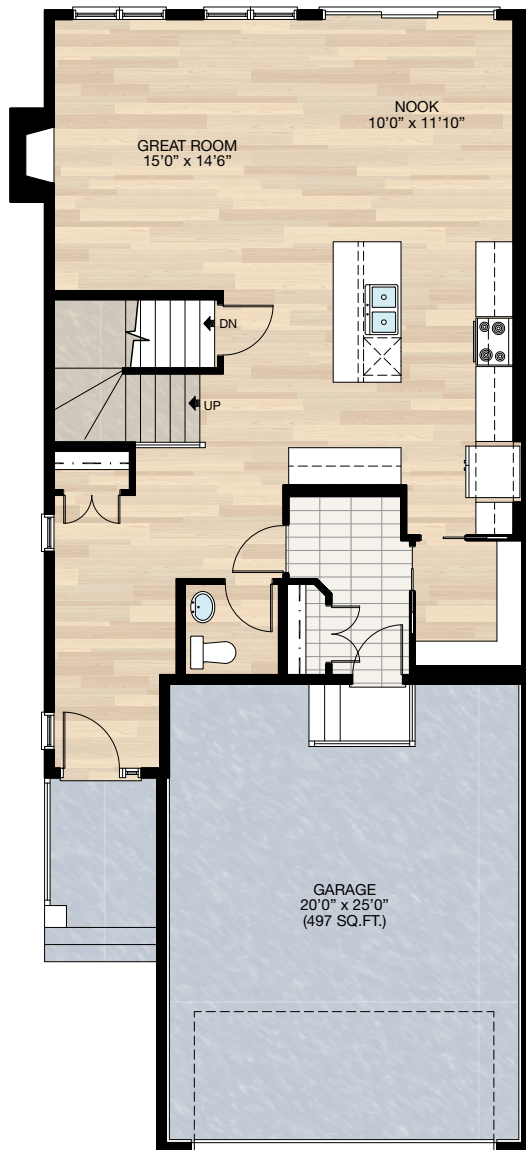
☐ Elements Specification ☐ Elite Specification ☐ Elite Plus Specification



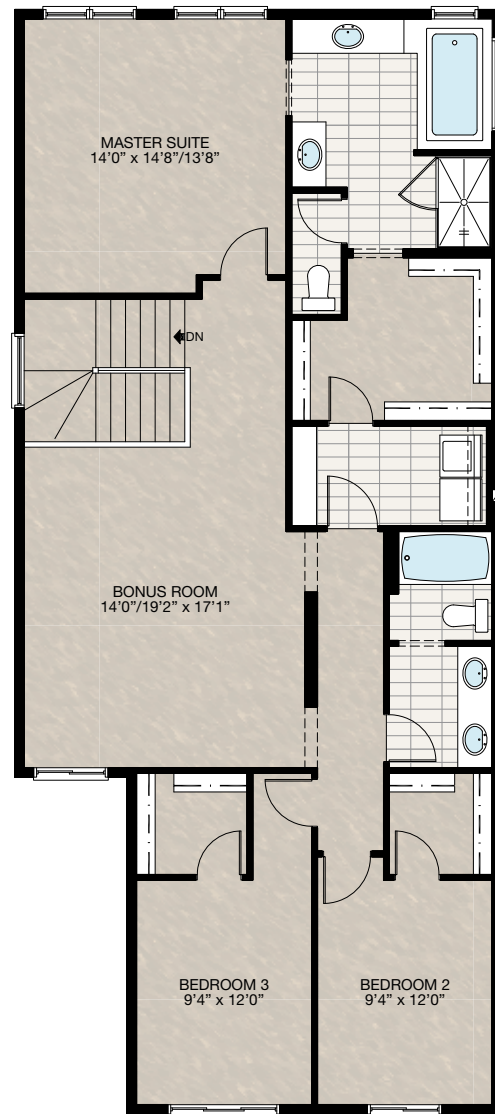
Trico Homes™  
The Heart of Homebuilding®

# STANDARD PLAN

THE  
WESTCHESTER  
2402 SQ.FT.



**MAIN**  
979 SQ.FT.



**UPPER**  
1423 SQ.FT.

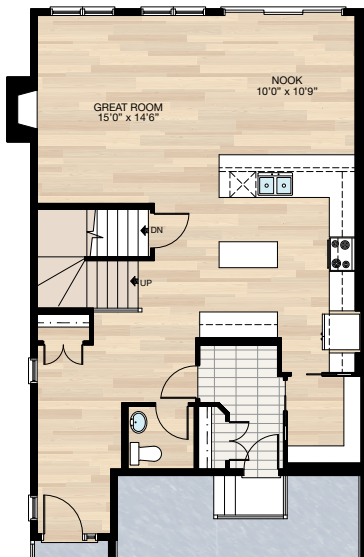
SOLID CORE PLANK	DECK	CARPET	CONCRETE	TILE	LAMINATE	LINO
------------------	------	--------	----------	------	----------	------

# FEATURED OPTIONS



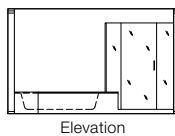
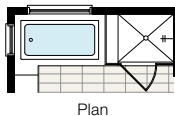
## SELECT-1 KITCHEN OPTION

- Re-design kitchen (delete 2'3" upper cabinets, adds 5'3" lower cabinets)
- Add one plug
- Add two lights on a single switch
- Change 4-way switch to 3-way



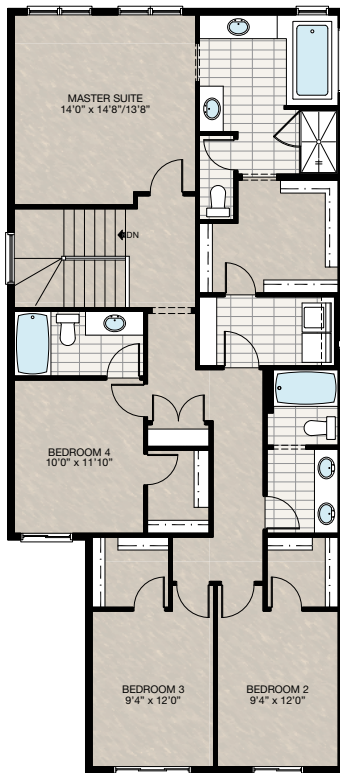
## SELECT-2 TILE & GLASS SHOWER OPTION

- Delete 36" x 60" fiberglass shower
- Add tile and glass shower



## SELECT-3 FOUR BEDROOM OPTION

- Convert bonus room to 4th bedroom
- Includes walk-in closet and ensuite for 4th bedroom
- Add linen closet

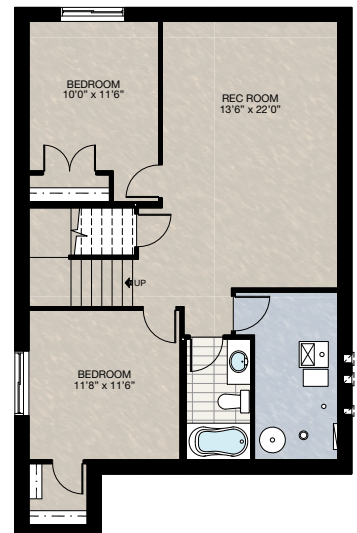
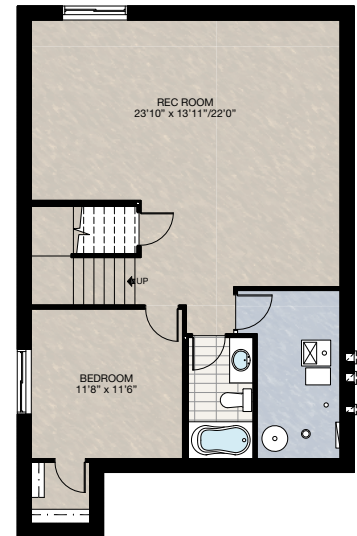


## SELECT-5 BASEMENT DEVELOPMENT OPTION 2

- 721 Sq.Ft. of developed area
- Includes finished basement stairwell
- Delete 2'8" door at top of stairwell
- Add 1 riser to stairs
- Increase basement foundation height to 9' (8'9" Headroom clearance)
- 60" x 24" Windows changed to 60" x 36"

## SELECT-4 BASEMENT DEVELOPMENT OPTION 1

- 721 Sq.Ft. of developed area
- Includes finished basement stairwell
- Delete 2'8" door at top of stairwell
- Add 1 riser to stairs
- Increase basement foundation height to 9' (8'9" headroom clearance)
- 60" x 24" Windows changed to 60" x 36"



SOLID CORE  
PLANK

DECK

CARPET

CONCRETE

TILE

LAMINATE

LINO

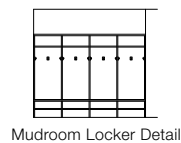
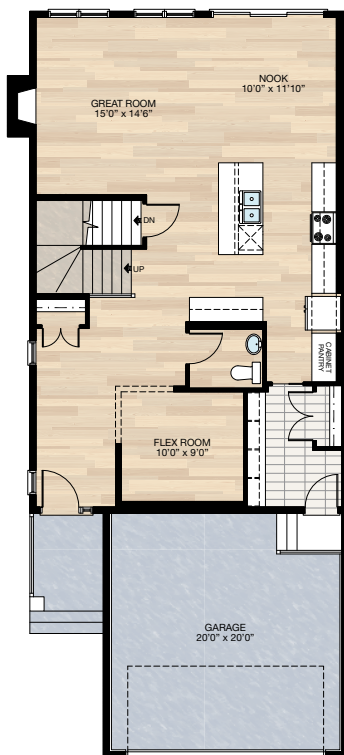
tricohomes.com

# FEATURED OPTIONS

THE  
**WESTCHESTER**  
2402 SQ.FT.

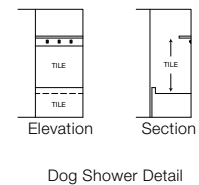
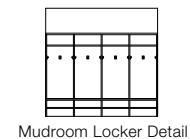
## SELECT-6 FLEX ROOM OPTION

- Additional 97 sq.ft. to main floor (this reduces garage by 97 sq.ft.)
- Relocate half bath
- Relocate garage entrance
- Delete standard pantry and add cabinet pantry
- Add mudroom lockers



## SELECT-7 MUD ROOM OPTION

- Additional 97 sq.ft. to main floor (this reduces garage by 97 sq.ft.)
- Relocate half bath
- Relocate garage entrance
- Add cabinet pantry
- Add mudroom lockers
- Add 36" x 48" raised tile dog shower and storage closet



Trico Homes is a local home builder, with new single and multi-family homes for sale in Calgary, Okotoks, Chestermere, Cochrane, and Airdrie. Offering a great selection of starter, move-up and semi-estate models in numerous communities, you'll find the house that's just right for you! Look for this model and many others in Beacon Heights in Sherwood, Belmont, Bridgeport, Carrington, Chelsea, Coach Ridge, Cornerbrook, Cranston's Riverstone, Crestmont, D'Arcy, Evanston, Heritage Hills, Hillcrest, Lakeview, Legacy, Legacy Commons Townhomes, Midtown, Nolan Hill, Pine Creek, Redstone, Riviera, Seton, Sirocco, Unity in Seton Townhomes, Verona Townhomes & Viridian Condos in Sage Hill, Wentworth Pointe Townhomes and Wolf Willow.



Renderings are artist's conceptions only and may vary by community and lot selection. Prices, floorplans, specifications and dimensions are approximate and are subject to change without notice. E.O.E. © All rights reserved, including the right of reproduction in the whole or in part without the permission of Trico Homes.

Plan updated as of Aug 8, 2018



tricohomes.com