
 3 Bedrooms

 2½ Bathrooms

 Double Garage

THE WESTFIELD

2016 SQ.FT.

☐ Elements Specification

☐ Elite Specification

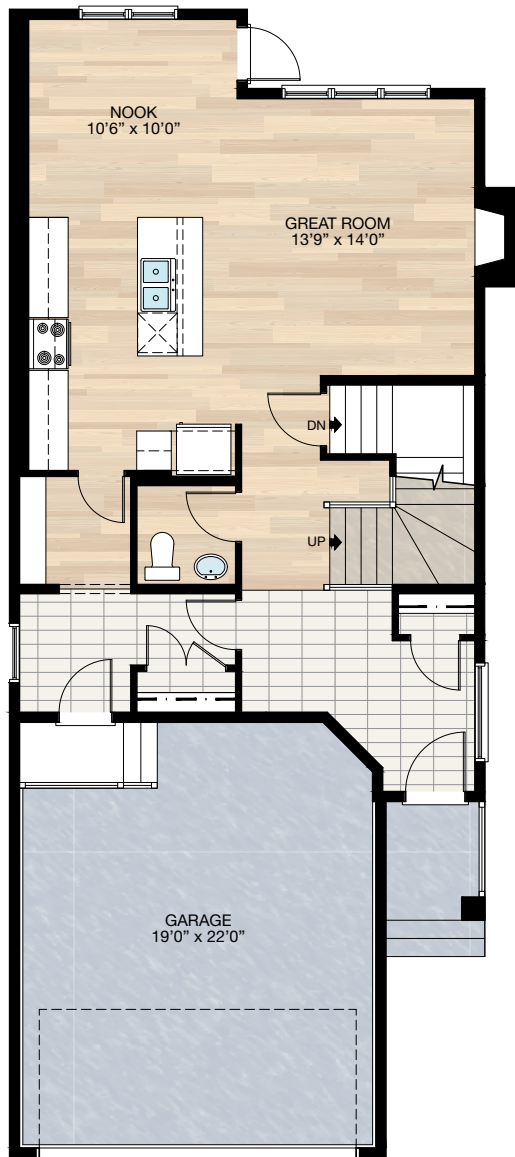
☐ Elite Plus Specification



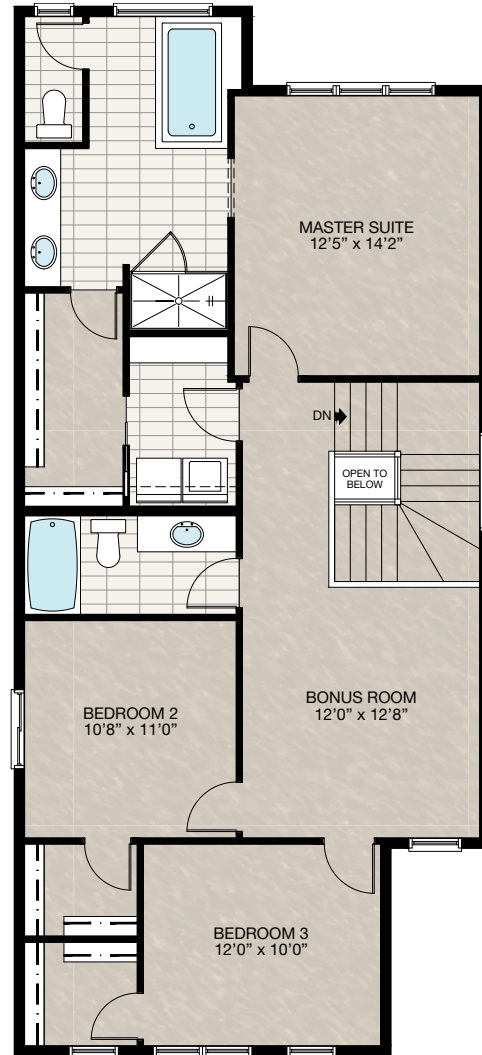
Trico Homes™
The Heart of Homebuilding®

STANDARD PLAN

THE
WESTFIELD
2016 SQ.FT.



MAIN
851 SQ.FT.



UPPER
1165 SQ.FT.

SOLID CORE PLANK	DECK	CARPET	CONCRETE	TILE	LAMINATE	LINO
---------------------	------	--------	----------	------	----------	------

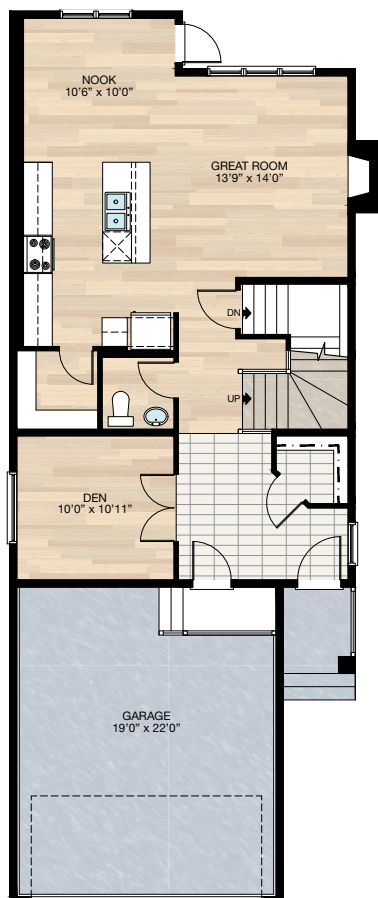
FEATURED OPTIONS



SELECT-1 DEN OPTION

- Additional 70 sq.ft. to main floor
- Extend main floor & garage out 4'0" towards the front of the house
- Delete mudroom
- Add two 2'4" French door to den
- Delete standard closet to foyer
- Add W.I.C. to foyer
- Relocate garage entry
- Relocate foyer 60" x 24" P window to den
- Relocate mudroom 36" x 24" P window to foyer
- Additional wire shelving to pantry

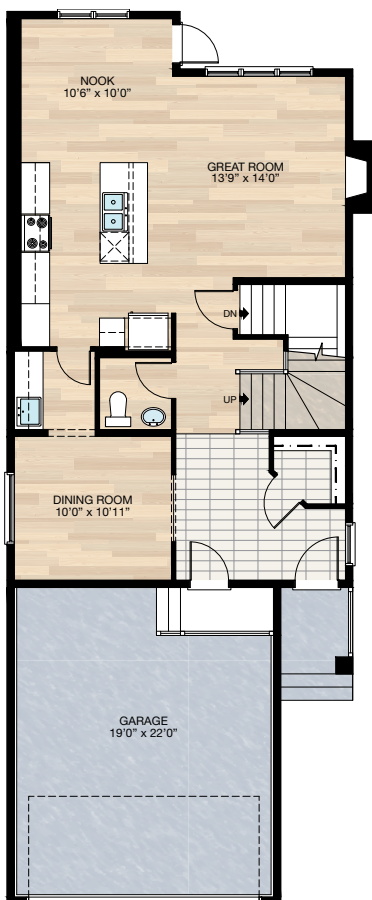
* Front entry 4'0" extension required for Evanston & Redstone to meet AC requirement (additional 23 sq.ft.)



SELECT-2 DINING ROOM WITH BUTLER'S PANTRY OPTION

- Additional 70 sq.ft. to main floor
- Extend main floor & garage out 4'0" towards the front of the house
- Delete mudroom
- Delete standard closet to foyer
- Add W.I.C. to foyer
- Relocate garage entry
- Relocate foyer 60" x 24" P window to dining room
- Relocate mudroom 36" x 24" P window to foyer
- Delete wire shelving in pantry
- Add 5'5½" upper & lower cabinet with bar sink
- Convert 3'0" of upper & lower cabinet in kitchen to pantry cabinet

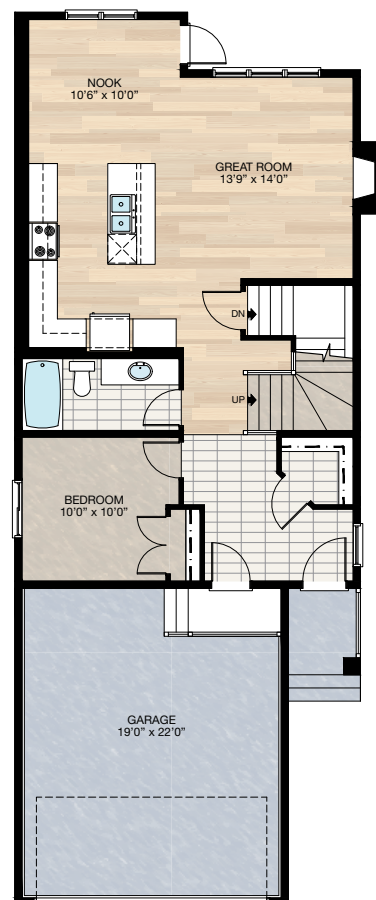
* Front entry 4'0" extension required for Evanston & Redstone to meet AC requirement (additional 23 sq.ft.)



SELECT-3 MAIN FLOOR BEDROOM OPTION

- Additional 70 sq.ft. to main floor
- Extend main floor & garage out 4'0" towards the front of the house
- Delete mudroom
- Delete standard closet to foyer
- Add W.I.C. to foyer
- Relocate garage entry
- Delete foyer 60" x 24" P window
- Relocate mudroom 36" x 24" P window to foyer
- Delete wire shelving in pantry
- Convert 3'0" of upper & lower cabinet in kitchen to pantry cabinet
- Add 48" x 40" HSL window to bedroom
- Convert ½ bath to 3-piece bath

* Front entry 4'0" extension required for Evanston & Redstone to meet AC requirement (additional 23 sq.ft.)



SOLID CORE
PLANK

DECK

CARPET

CONCRETE

TILE

LAMINATE

LINO

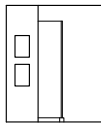
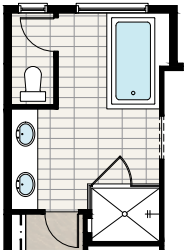
tricohomes.com

FEATURED OPTIONS

THE
WESTFIELD
2016 SQ.FT.

☐ SELECT-4 ENSUITE OPTION

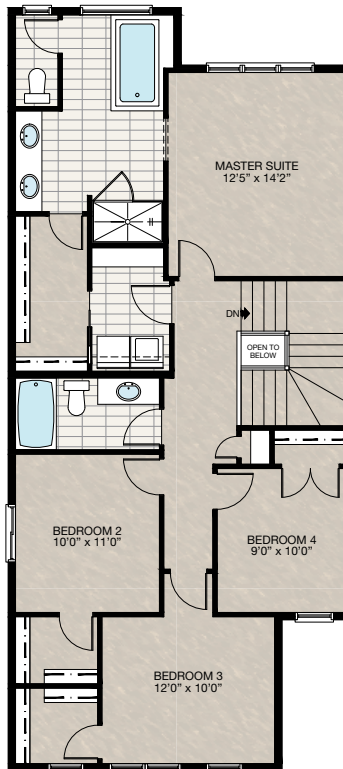
- Delete standard 60" x 36" fiberglass shower
- Add 60" x 48" glass & tile shower with tile niches



Shower Niche Detail

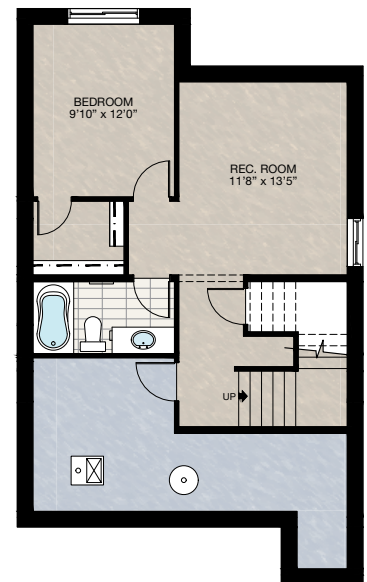
☐ SELECT-5 UPPER FLOOR 4 BEDROOMS OPTION

- Convert bonus room to bedroom 4
- Reduce main bath vanity
- Add linen closet



☐ SELECT-6 BASEMENT DEVELOPMENT OPTION

- 481 Sq.Ft. of developed area
- Includes finished basement stairwell
- Delete 2'8" door at top of stairwell
- Add one riser to stairwell for 9'0" basement ceiling (8'9" headroom clearance)
- 60" x 24" Window changed to 60" x 36"



Trico Homes is a local home builder, with new single and multi-family homes for sale in Calgary, Okotoks, Chestermere, Cochrane, and Airdrie. Offering a great selection of starter, move-up and semi-estate models in numerous communities, you'll find the house that's just right for you! Look for this model and many others in Beacon Heights in Sherwood, Belmont, Bridgeport, Carrington, Chelsea, Coach Ridge, Cornerbrook, Cranston's Riverstone, Crestmont, D'Arcy, Evanston, Heritage Hills, Hillcrest, Lakeview, Legacy, Legacy Commons Townhomes, Midtown, Nolan Hill, Pine Creek, Redstone, Riviera, Seton, Sirocco, Unity in Seton Townhomes, Verona Townhomes & Viridian Condos in Sage Hill, Wentworth Pointe Townhomes and Wolf Willow.



Renderings are artist's conceptions only and may vary by community and lot selection. Prices, floorplans, specifications and dimensions are approximate and are subject to change without notice. E.O.E. © All rights reserved, including the right of reproduction in the whole or in part without the permission of Trico Homes.

Plan updated as of Aug 8, 2018

**Trico
Homes™**
The Heart of Homebuilding®



tricohomes.com