


 3 Bedrooms

 2½ Bathrooms

 Double Garage

# THE HIGHWOOD

2075 SQ.FT.

☐ Elements Specification

☐ Elite Specification

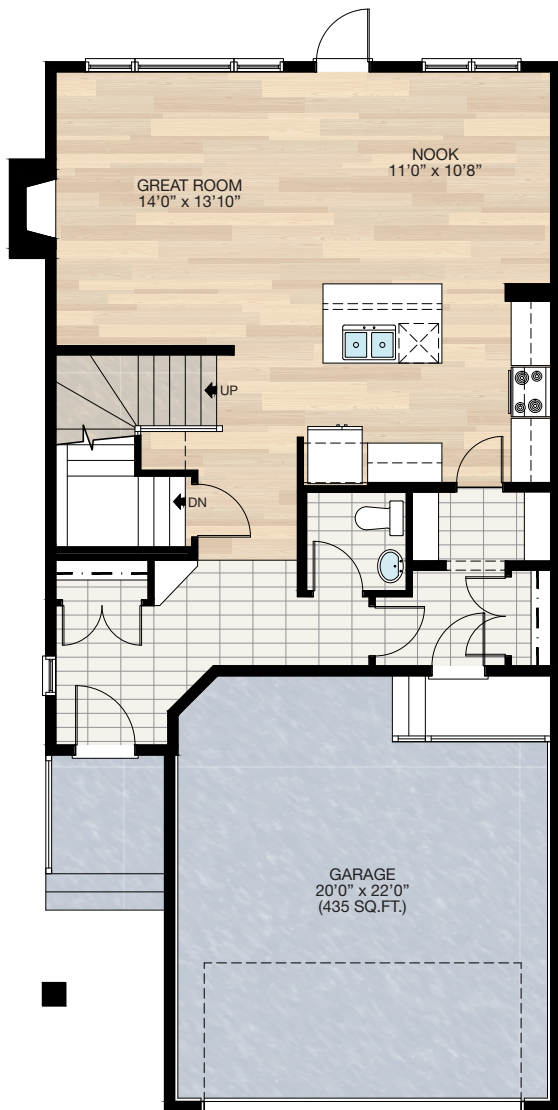
☐ Elite Plus Specification



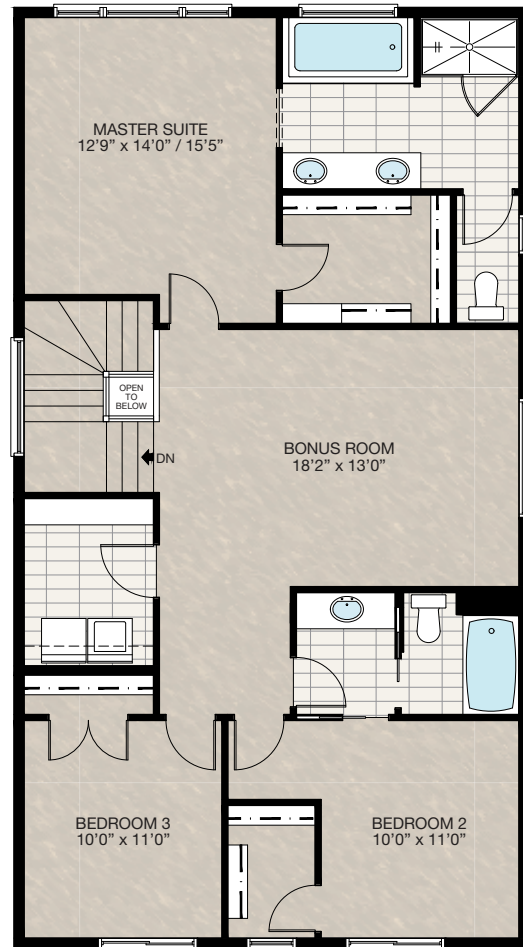
Trico Homes™  
The Heart of Homebuilding®

# STANDARD PLAN

THE  
HIGHWOOD  
2075 SQ.FT.



**MAIN**  
844 SQ.FT.



**UPPER**  
1231 SQ.FT.

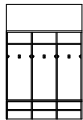
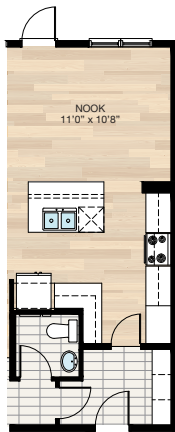
SOLID CORE PLANK	DECK	CARPET	CONCRETE	TILE	LAMINATE	LINO
------------------	------	--------	----------	------	----------	------

# FEATURED OPTIONS

← 34' →  
Min. Lot Width

## SELECT-1 KITCHEN & MUDROOM OPTION

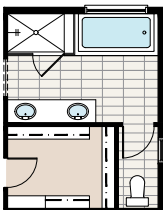
- Additional cabinet & counter to kitchen
- Delete pantry & wire shelving
- Add 36" pantry cabinet
- Delete closet in mudroom
- Add MDF lockers in mudroom
- Add 1 potlight to kitchen



Mudroom MDF Locker Detail

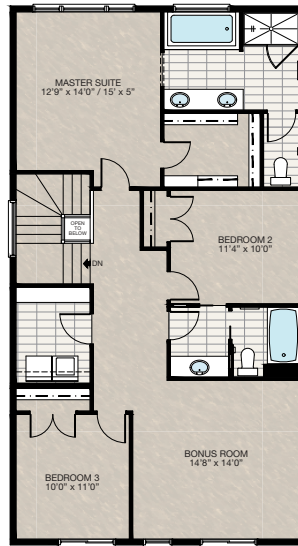
## SELECT-2 ENSUITE OPTION

- Switch tub and shower location
- Delete standard 60" x 36" fiberglass shower
- Add 64" x 40" tile shower with 10mm glass and tile ledge extension from tub



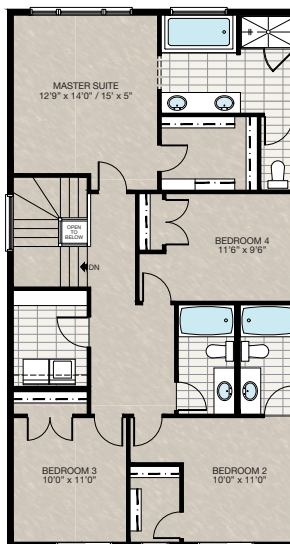
## SELECT-3 FRONT BONUS ROOM OPTION

- Add 48" x 40" HSL window to bedroom 2
- Delete 72" x 24" P window in bonus room



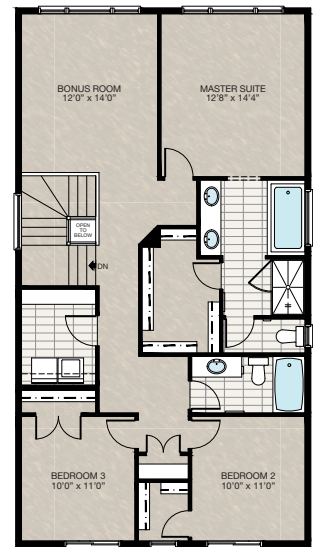
## SELECT-5 UPPER FLOOR FOUR BEDROOMS OPTION

- Bedroom 4 in lieu of bonus room
- Add 3-piece ensuite to bedroom 2
- Add 48" x 40" HSL window to bedroom 4
- Delete 72" x 24" P window in bonus room



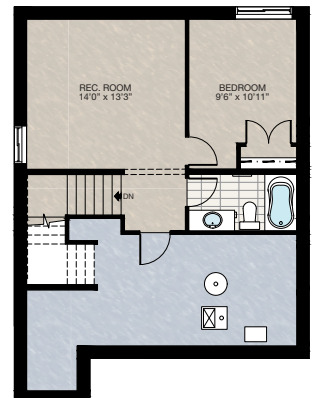
## SELECT-4 REAR BONUS ROOM OPTION

- Delete pocket door to main bath
- Add linen closet between bedroom 2 & 3
- Delete 72" x 24" window in bonus room
- Add 30" x 60" / 48" x 60" / 30" x 60" windows in bonus room



## SELECT-6 BASEMENT DEVELOPMENT OPTION

- 432 Sq.Ft. of developed area
- Add rec.room, bedroom with closet, bathroom and linen closet
- Includes finished basement stairwell
- Delete 2'8" door top of stairwell
- Add extra riser to stairwell for 9' basement ceiling with 8'9" headroom clearance
- 60" x 24" Window changed to 60" x 36"



SOLID CORE  
PLANK

DECK

CARPET

CONCRETE

TILE

LAMINATE

LINO

tricohomes.com

THE  
**HIGHWOOD**  
2075 SQ.FT.

This image shows a blank sheet of white paper with horizontal ruling lines. The lines are evenly spaced and run across the width of the page. There are no margins, text, or other markings on the paper.

CANADA'S **BEST  
MANAGED  
COMPANIES**  
Platinum member  
2004 - 2018



Plan updated as of Aug 8, 2018

