

- 3 Bedrooms
- 2½ Bathrooms
- Double Garage

THE WESLEY

1817 SQ.FT.

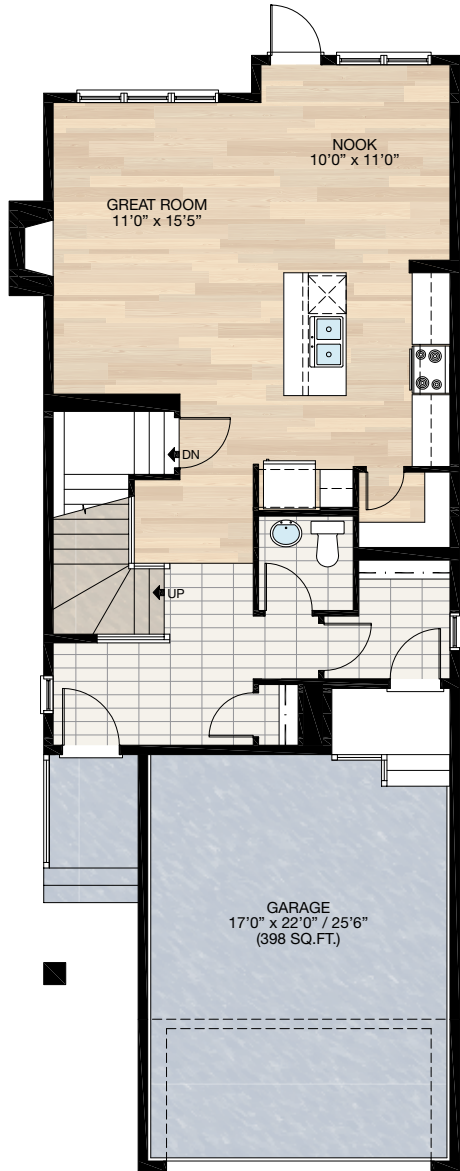
☐ Elements Specification ☐ Elite Specification ☐ Elite Plus Specification



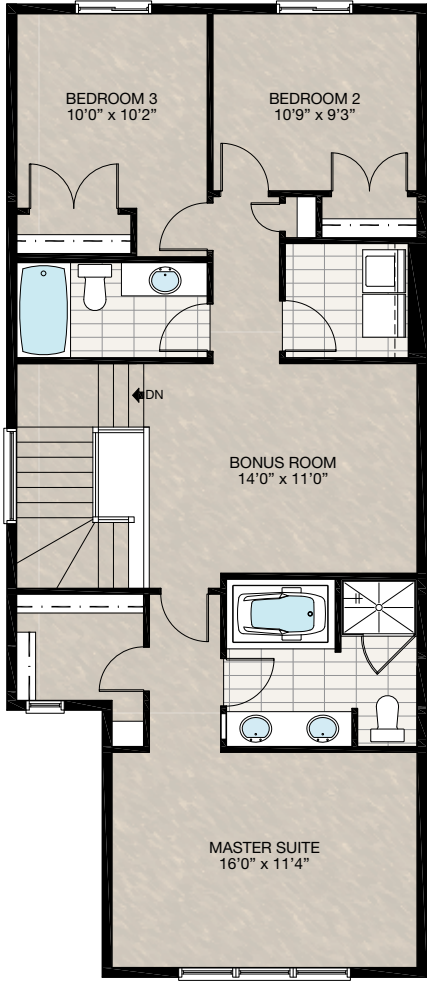
Trico Homes™
The Heart of Homebuilding®

STANDARD PLAN

THE
WESLEY
1817 SQ.FT.



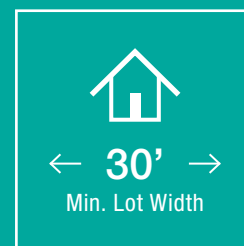
MAIN
778 SQ.FT.



UPPER
1039 SQ.FT.

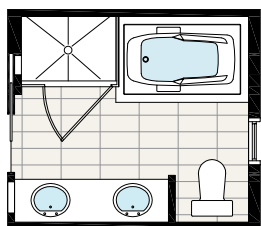
SOLID CORE PLANK	DECK	CARPET	CONCRETE	TILE	LAMINATE	LINO
---------------------	------	--------	----------	------	----------	------

FEATURED OPTIONS



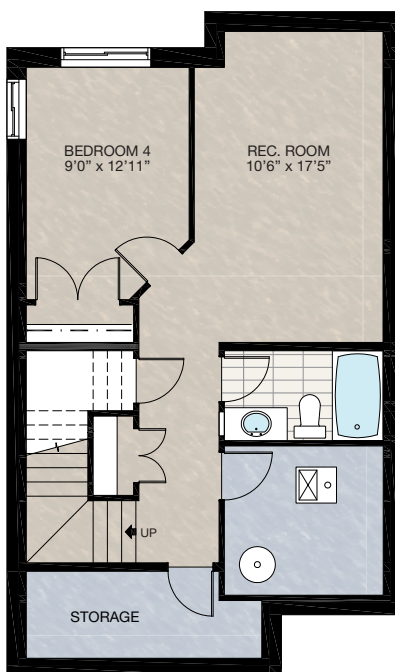
SELECT-1 ENSUITE OPTION

- Shower & tub location switched
- Upgrade shower to 48" x 36" tile & glass shower
- Change ensuite door from 2'6" passage door to 2'6" pocket door



SELECT-2 BASEMENT DEVELOPMENT OPTION

- 476 Sq.Ft. of developed area
- Includes finished basement stairwell
- Delete 2'8" door at top of stairwell
- Add one riser to stairwell for 9'0" basement ceiling (8'9" headroom clearance)
- 60" x 24" Window changed to 60" x 36"



SOLID CORE
PLANK

DECK

CARPET

CONCRETE

TILE

LAMINATE

LINO

tricohomes.com

THE
WESLEY
1817 SQ.FT.

THE
WESLEY
1817 SQ.FT.

 CANADA'S **BEST
MANAGED
COMPANIES**
Platinum member
2004 - 2018



Plan updated as of Aug 8, 2018

