
 3 Bedroom

 2½ Bathrooms

 Double Garage

THE JASPER

1919 SQ.FT.

☐ Elements Specification

☐ Elite Specification

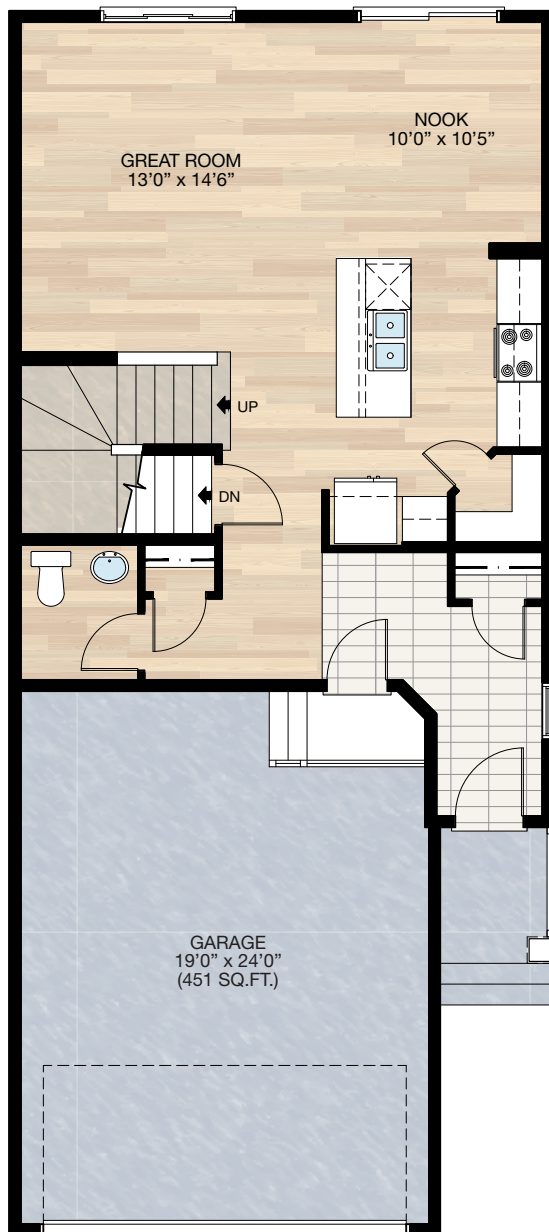
☐ Elite Plus Specification



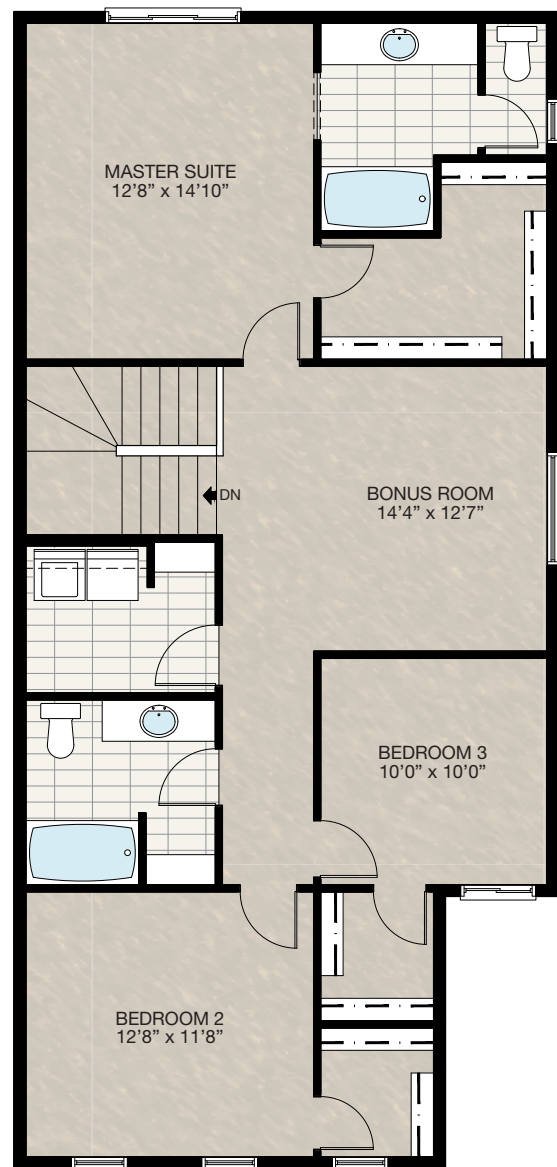
Trico Homes™
The Heart of Homebuilding®

STANDARD PLAN

THE
JASPER
1919 SQ.FT.



MAIN
755 SQ.FT.



UPPER
1164 SQ.FT.

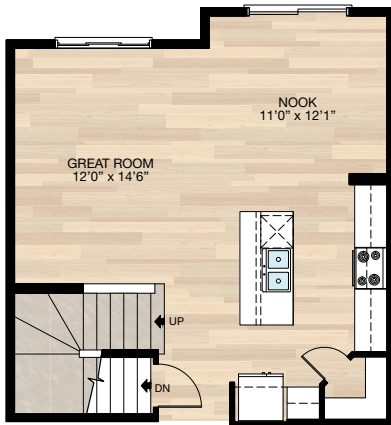
SOLID CORE PLANK	DECK	CARPET	CONCRETE	TILE	LAMINATE	LINO
---------------------	------	--------	----------	------	----------	------

FEATURED OPTIONS



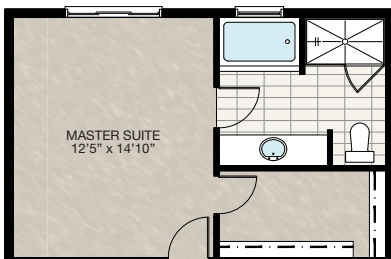
SELECT-1 LARGER KITCHEN OPTION

- Add 12' x 2' cantilever to rear
- Additional 24 sq.ft. to main floor
- Extend kitchen upper & lower cabinet 24"
- Kitchen island remain the same length relocate center to stove
- Add flush beam above nook area



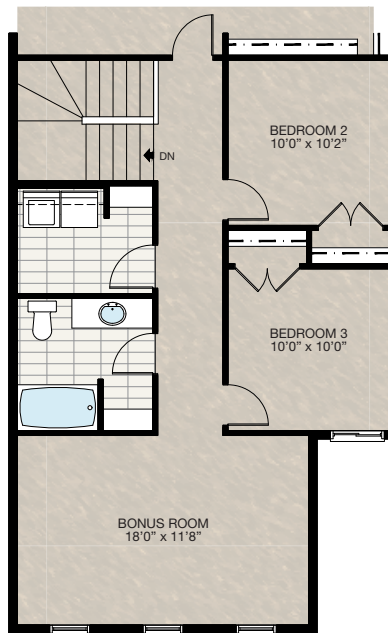
SELECT-2 4-PIECE ENSUITE OPTION

- Reduced master suite width 3"
- Reduced walk-in closet
- Delete 60" x 34" 1-piece tub/shower
- Add 60" x 36" soaker tub w/4" tile deck
- Add 60" x 36" 1-piece fiberglass shower
- Delete 1 light & bath fan
- Add LED down light to shower
- Delete 24" x 36" VSL window
- Add 36" x 40" P window



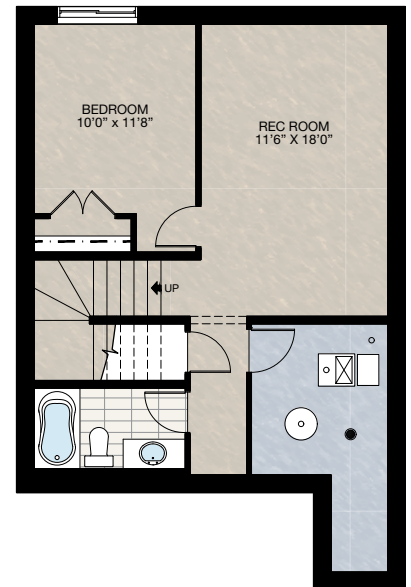
SELECT-3 FRONT BONUS ROOM OPTION

- Delete 60" x 18" P window
- Add 40" x 40" HSL to Bedroom 2



SELECT-4 BASEMENT DEVELOPMENT OPTION

- Basement development adds 496 sq.ft.
- Finished basement stairwell
- Delete 2'8" door at top of stairwell
- Added extra riser to stairwell for 9'0" basement ceiling with 8'9" headroom
- 60" x 24" Window changed to 60" x 36"



THE
JASPER
1919 SQ.FT.

THE
JASPER
1919 SQ.FT.

This image shows a single sheet of white paper with horizontal ruling lines. The lines are evenly spaced and run across the width of the page. There are no margins, text, or other markings on the paper.

 CANADA'S **BEST
MANAGED
COMPANIES**
Platinum member
2004 - 2018

Plan updated as of **October 29, 2018**