
 3 Bedrooms

 2½ Bathrooms

THE RAEYA

1802 SQ.FT.

☐ Elements Specification

☐ Elite Specification

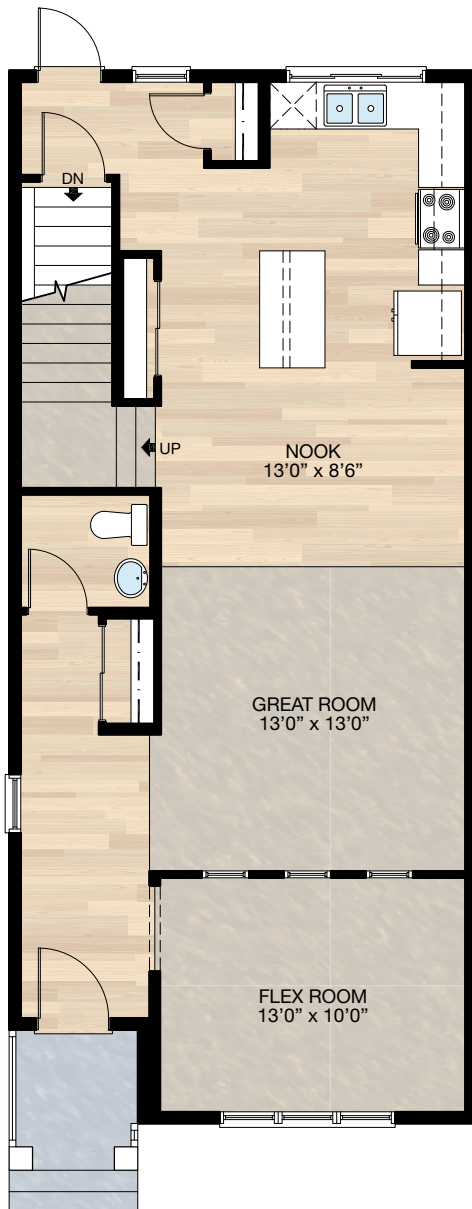
☐ Elite Plus Specification



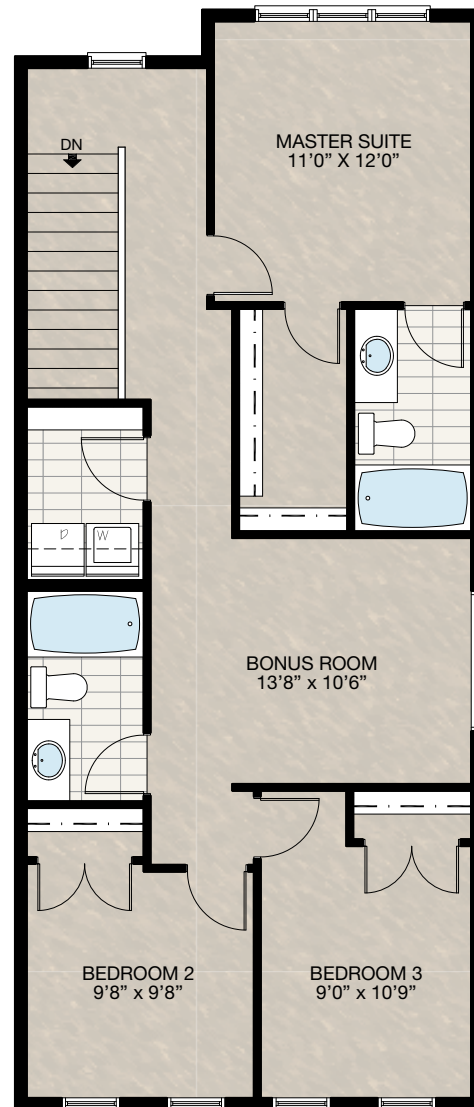
Trico Homes™
The Heart of Homebuilding®

STANDARD PLAN

THE
RAEYA
1802 SQ.FT.



MAIN
878 SQ.FT.



UPPER
924 SQ.FT.

SOLID CORE PLANK	DECK	CARPET	CONCRETE	TILE	LAMINATE	LINO
------------------	------	--------	----------	------	----------	------

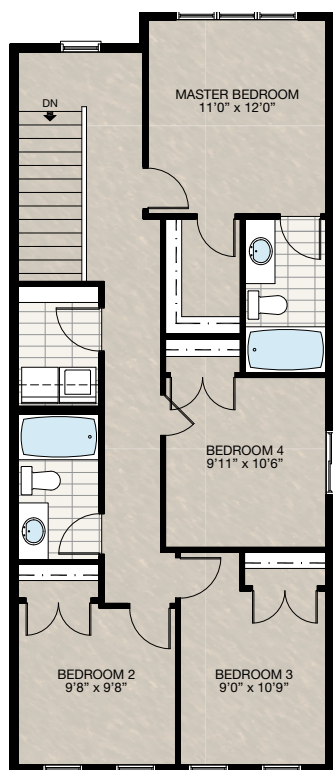
FEATURED OPTIONS



SELECT-1

4 BEDROOM UPPER FLOOR OPTION

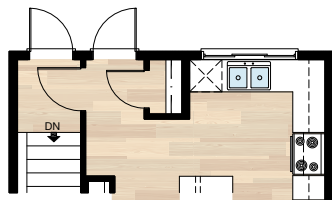
- Delete bonus room & add fourth bedroom
- Delete 72" x 20" window, add 48" x 48" window
- This reduces the depth of the master walk-in closet
- Add one light to the hallway on existing switch



SELECT-2

REAR BASEMENT ENTRANCE OPTION

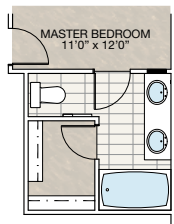
- Delete 30" x 72" window
- Add standard 2'8" exterior door
- Move basement door
- Add light to rear landing (using existing switch)
- Add exterior light & switch



SELECT-3

ALTERNATE ENSUITE OPTION

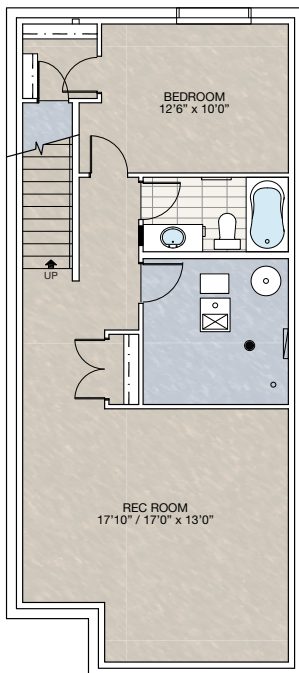
- Add 24" of vanity & second sink
- Add 2 lights to existing switch



SELECT-5

BASEMENT DEVELOPMENT OPTION

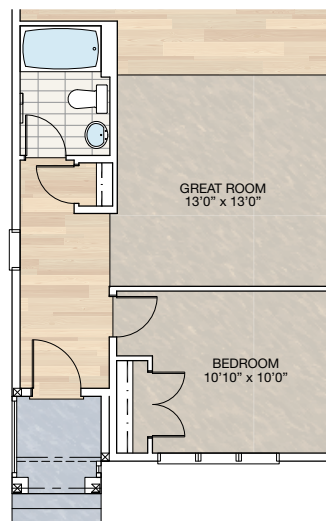
- 652 Sq.Ft. basement development
- Included finished basement stairwell
- Delete 2'8" passage door top of stairwell
- Add one riser to stairwell for 9'0" basement ceiling (8'9" headroom clearance)
- Reduce length of bearing wall & strip footing & add dropped beam
- 60" x 24" Window changed to 60" x 36"



SELECT-4

MAIN FLOOR FULL BATH OPTION

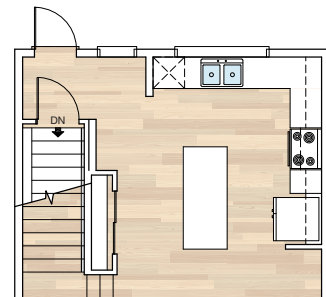
- Add standard tub/shower unit to half bath
- Delete 4'0" bypass door & replace with 2'4" swing door
- Flex room becomes bedroom with two 2'0" swing doors & closet
- Delete three 24" x 24" interior windows
- Re-centre entry window with great room opening
- Extend beam in front entry 3'0"



SELECT-6

ALTERNATE KITCHEN OPTION

- Delete rear closet
- Add 2" x 6" mech wall by stairs
- Extend lower cabinets 2'4"
- Extend island 18"
- Re-centre window, sink, dishwasher & lights



SOLID CORE
PLANK

DECK

CARPET

CONCRETE

TILE

LAMINATE

LINO

tricohomes.com

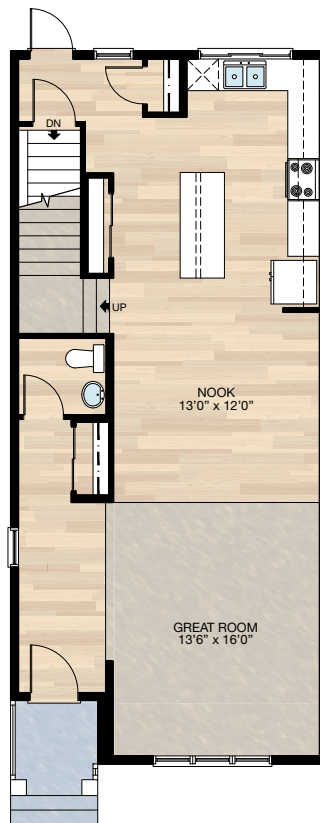
FEATURED OPTIONS

THE
RAEYA
1802 SQ.FT.



SELECT-7 DELETE FLEX ROOM OPTION

- Delete front flex room
- Additional 3'9½" of upper and lower cabinets
- Extend island 20"
- Adjust nook and great room sizes, flooring & lighting locations



Trico Homes is a local home builder, with new single and multi-family homes for sale in Calgary, Okotoks, Chestermere, Cochrane, and Airdrie. Offering a great selection of starter, move-up and semi-estate models in numerous communities, you'll find the house that's just right for you! Look for this model and many others in Belmont, Carrington, Coach Ridge, Cornerbrook, Cranston's Riverstone, Crestmont, D'Arcy, Dawson's Landing, Evanston, Heritage Hills, Lakeview, Legacy, Legacy Commons Townhomes, Livingston, Midtown, Nolan Hill, Pine Creek, Precedence, Redstone, Rivercrest, Riviera, Seton, Sirocco, Unity in Seton Townhomes, Verona Townhomes, Wedderburn, Wentworth Pointe Townhomes and Wolf Willow.



Renderings are artist's conceptions only and may vary by community and lot selection. Prices, floorplans, specifications and dimensions are approximate and are subject to change without notice. E.O.E. © All rights reserved, including the right of reproduction in the whole or in part without the permission of Trico Homes.

Plan updated as of January 10, 2019



tricohomes.com