
 3 Bedrooms

 2½ Bathrooms

 Double Garage

THE WINSTON

2515 SQ.FT.

☐ Elements Specification

☐ Elite Specification

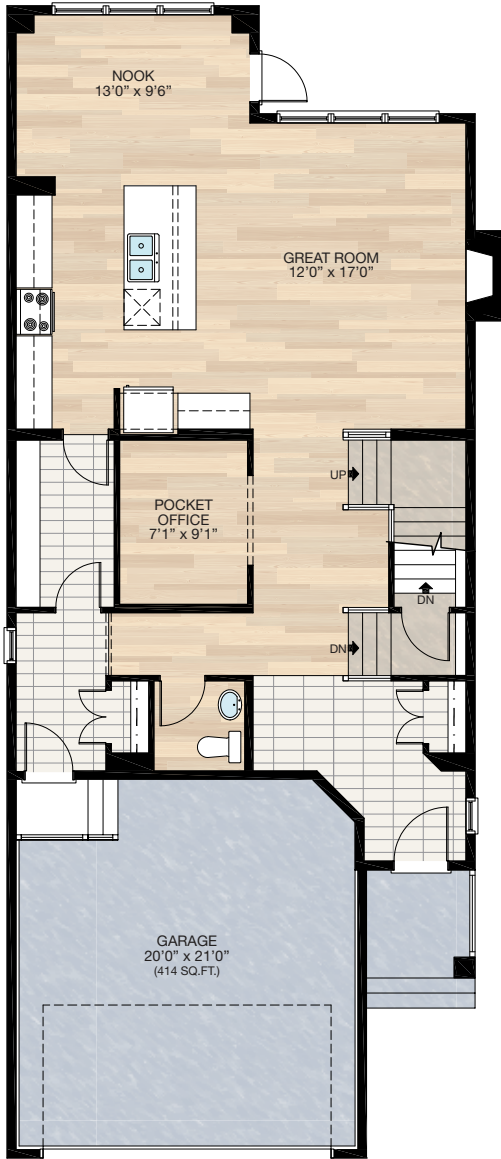
☐ Elite Plus Specification



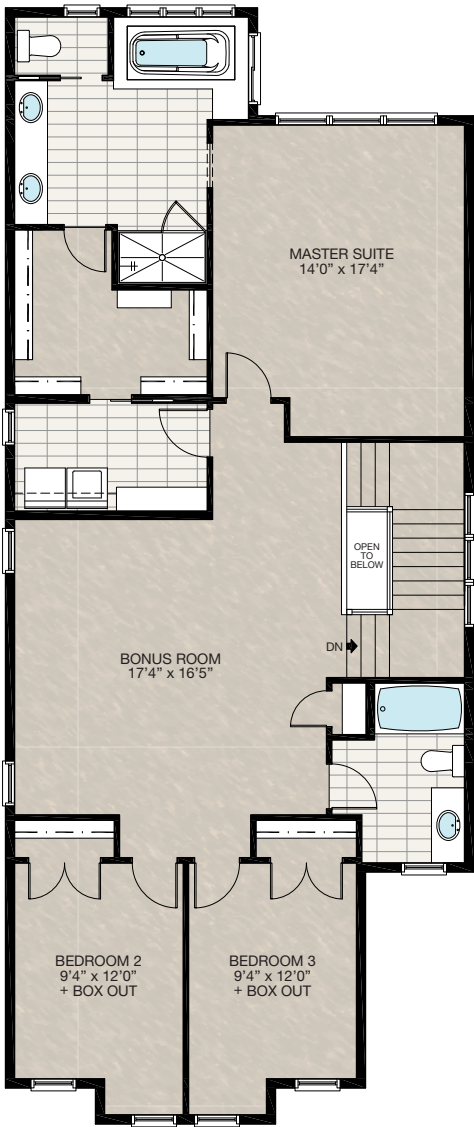
Trico Homes™
The Heart of Homebuilding®

STANDARD PLAN

THE
WINSTON
2515 SQ.FT.



MAIN
1091 SQ.FT.



UPPER
1424 SQ.FT.

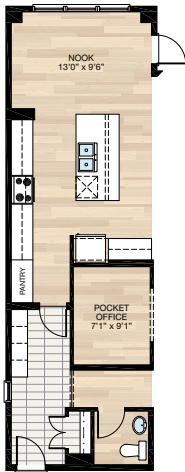
SOLID CORE PLANK	DECK	CARPET	CONCRETE	TILE	LAMINATE	LINO
---------------------	------	--------	----------	------	----------	------

FEATURED OPTIONS



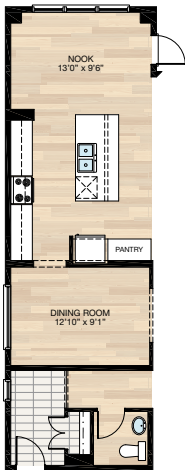
SELECT-1 KITCHEN OPTION

- Delete wire shelving pantry
- Add 48" cabinet pantry
- Add MDF locker to mudroom



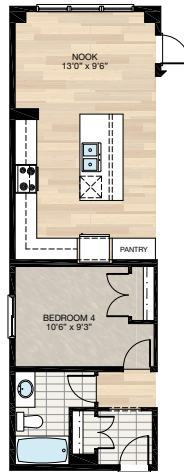
SELECT-2 DINING ROOM OPTION

- Delete wire shelving pantry
- Delete cabinet & counter next to fridge
- Add 48" cabinet pantry next to fridge
- Add 72" x 24" P window to dining room



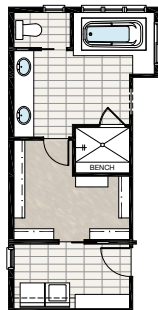
SELECT-3 MAIN FLOOR BEDROOM OPTION

- Delete wire shelving pantry
- Delete cabinet & counter next to fridge
- Add 48" cabinet pantry next to fridge
- Additional cabinet & counter to kitchen corner
- Delete 24" x 72" P window in mudroom
- Add 48" x 40" HSL to bedroom
- Delete 1/2 bath
- Add 3-piece bath
- Relocate mudroom



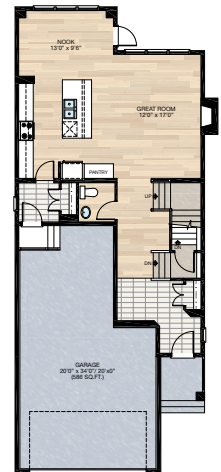
SELECT-4 ENSUITE OPTION

- Delete 60" x 36" fibreglass shower
- Add 60" x 54" tile & glass shower with 12" tiled bench



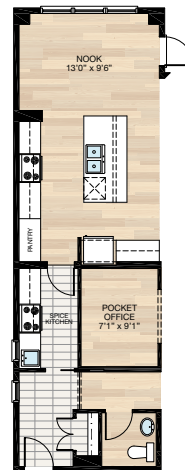
SELECT-5 TANDEM GARAGE OPTION

- Reduce main floor area to 919 sq.ft.
- Delete pocket office
- Delete wire shelving pantry
- Delete cabinet & counter next to fridge
- Add 48" cabinet pantry next to fridge
- Rework front entry area & mudroom & 1/2 bath



SELECT-8 SPICE KITCHEN OPTION

- Delete wire shelving pantry
- Add 48" cabinet pantry
- Spice kitchen includes: 79" upper & lower cabinet, stove, hoodfan & sink
- Add 24" x 36" VSL window to spice kitchen



SOLID CORE
PLANK

DECK

CARPET

CONCRETE

TILE

LAMINATE

LINO

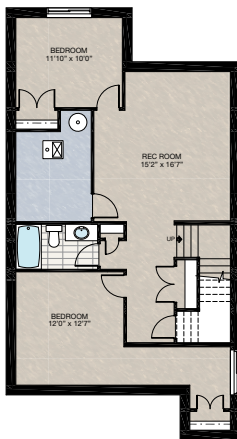
tricohomes.com

FEATURED OPTIONS

THE
WINSTON
2515 SQ.FT.

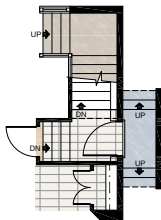
SELECT-6 BASEMENT DEVELOPMENT OPTION

- 818 Sq.Ft. of developed area
- Includes finished basement stairwell
- Delete 2'8" door top of stairwell
- Add one riser to stairwell for 9'0" basement ceiling (8'9" Headroom clearance)
- 60" x 24" Windows changed to 60" x 36"



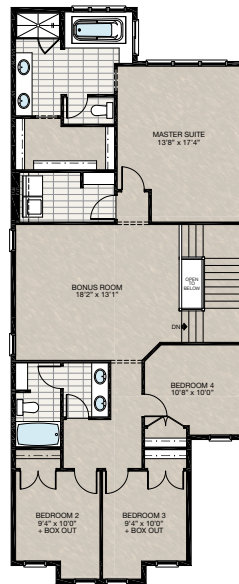
SELECT-9 SIDE ENTRY OPTION

- Relocate 2'8" door to top of stair
- Delete basement window next to side entry



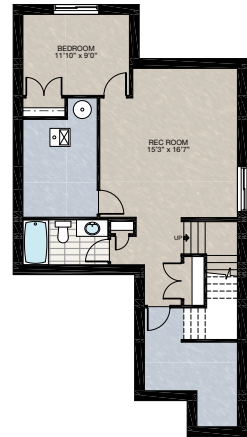
SELECT-10 UPPER FLOOR 4 BEDROOM OPTION

- 2'0" x 20'0" Extension over garage (Additional 40 sq.ft. to upper floor)
- Add 48" x 40" HSL to bedroom four to meet egress
- Reduce master bedroom 4" in width to accommodate ensuite/laundry location

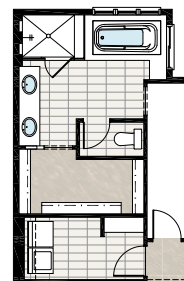


SELECT-7 BASEMENT DEVELOPMENT OPTION (FOR SELECT-5 TANDEM GARAGE OPTION)

- 536 Sq.Ft. of developed area
- Includes finished basement stairwell
- Delete 2'8" door top of stairwell
- Add one riser to stairwell for 9'0" basement ceiling (8'9" Headroom clearance)
- 60" x 24" Windows changed to 60" x 36"



SELECT-11 TILE & GLASS SHOWER OPTION FOR UPPER 4 BEDROOM OPTION



Trico Homes is a local home builder, with new single and multi-family homes for sale in Calgary, Okotoks, Chestermere, Cochrane, and Airdrie. Offering a great selection of starter, move-up and semi-estate models in numerous communities, you'll find the house that's just right for you! Look for this model and many others in Beacon Heights in Sherwood, Belmont, Bridgeport, Carrington, Chelsea, Coach Ridge, Cornerbrook, Cranston's Riverstone, Crestmont, D'Arcy, Evanston, Heritage Hills, Hillcrest, Lakeview, Legacy, Legacy Commons Townhomes, Midtown, Nolan Hill, Pine Creek, Redstone, Riviera, Seton, Sirocco, Unity in Seton Townhomes, Verona Townhomes & Viridian Condos in Sage Hill, Wentworth Pointe Townhomes and Wolf Willow.



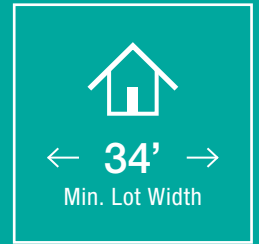
Renderings are artist's conceptions only and may vary by community and lot selection. Prices, floorplans, specifications and dimensions are approximate and are subject to change without notice. E.O.E. © All rights reserved, including the right if reproduction in the whole or in part without the permission of Trico Homes.

Plan updated as of Aug 8, 2018



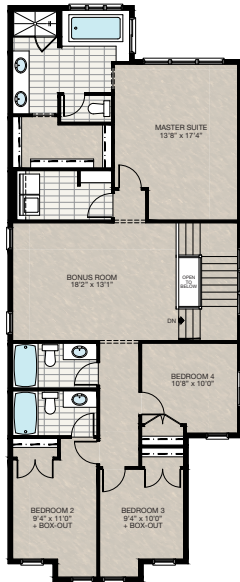
tricohomes.com

FEATURED WINSTON OPTIONS



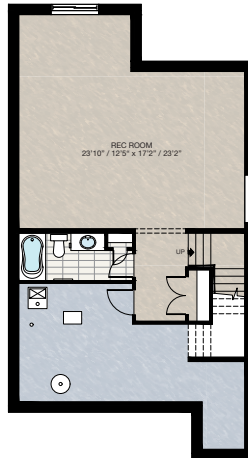
SELECT-12 UPPER FLOOR 4 BEDROOMS & 3 BATHS OPTION

- 2'0" x 20'0" Extension over garage (additional 40 sq.ft. to upper floor)
- Add 3-piece ensuite to Bedroom 2
- Add 48" x 40" HSL to Bedroom 4 to meet egress
- Master bedroom reduced 4" in width to accommodate ensuite & laundry
- Bonus room reduced from (17'4" x 15'6") to (18'2" x 13'1")
- Bedroom 2 increased 1'0" in length



SELECT-13 BASEMENT DEVELOPMENT

- 644 Sq.ft. developed area
- Mechanical room relocated from standard location
- Included finished basement stairwell
- Delete 2'8" door top of stairwell
- Add one riser to stairwell for 9'0" basement ceiling (8'9" Headroom clearance)
- Windows change to 60" x 36"



SELECT-14 BASEMENT DEVELOPMENT WETBAR OPTION

- This option must combine with SELECT-13
- Add 108" lower cabinetry with bar sink
- Add 24" high tile backsplash
- Add 108" long floating shelf @ 24" above backsplash
- Add one row of standard tile in front of cabinet

