



ENTERPRISE PLAN

Upgrade your plan, upgrade your data ecosystem

Create experiences that win loyal customers for life with
AI-ready behavioral data at enterprise-scale.

Get in touch with your Account Executive
or visit fullstory.com to learn more



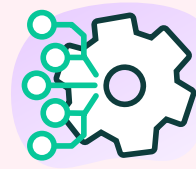
For organizations that need to discover trends, plan roadmaps, improve conversions, and take actions faster.



Unmatched data capture

Automatically capture, index, and semantically structure the data behind every user action.

- Unstructured stream
- AI-assisted signals
- Instrumented events
- Unbiased, first-party data
- Mobile data capture (add-on*)



Enterprise-grade access controls

Promote cross-team collaboration with allocated user roles, permissions, and integrations.

- Role-based access controls
- Multi-organization management (add-on*)
- Data quality monitoring & recommendations
- Integrations, webhooks, & APIs



Premium product analytics

Analyze and act on web and mobile user behavior in digestible visuals.

- Dashboards & funnels
- Conversion analysis
- Journey mapping
- Retention analysis
- Real-time metric alerts



Superior session insights

Watch replays to improve the customer experience and decrease time-to-resolution.

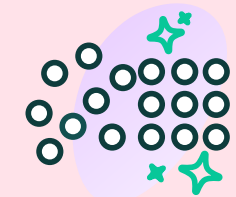
- Session replay
- Heatmaps and conversion maps
- Find & fix insights
- AI-powered session summaries
- Shareable session links



Industry-leading security & privacy

Reduce risk with robust privacy settings that never capture sensitive information.

- SAML Single Sign-On (SSO)
- Sensitive data detection
- Configurable form privacy
- Persistent data encryption using AES-256 standards



NEW!

Data Direct bundle

Add Data Direct to your Enterprise plan to connect behavioral data to your data ecosystem.

- Data warehouse integration
- Individual visit API
- Streaming webhooks
- Split processing-designated product analytics sampling percentage