

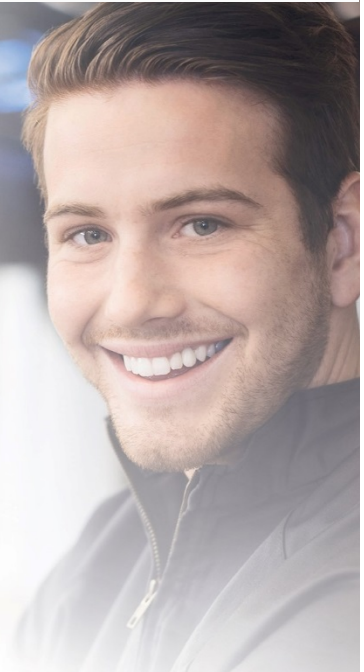
# Our warranty gives you extra security when you buy a car

Choose 12 or 24 months' peace of mind.

# kvd cars

## Our car warranty, 12 / 24 months

- ▶ This warranty covers most of the really costly repairs that your car may need in the event of an unforeseen incident.
- ▶ The warranty is linked with your registration number, so it can be transferred with the car if you sell it to another private individual. This enhances the value of your car.
- ▶ No excess! If anything happens to your car, all you have to do is contact us – we'll do the rest.
- ▶ Reporting problems is easy, and our professional administrators and car specialists will deal with your claim quickly. You'll normally receive a response within one hour on any problems reported.
- ▶ Have your car repaired at a workshop and in a place to suit you – in Sweden, the Nordic region and the EU. We'd be happy to help by referring you to the best workshops to deal with your car if you need help.
- ▶ Towing is included in the event of problems covered by the warranty.



### Our car warranty, 12 / 24 months

The warranty will automatically expire when the car is 10 years old or when it has covered more than 200,000 km. See the warranty certificate for the term of the warranty and the distance travelled.

#### The warranty covers damage to the following components:

- 1. Engine electronics:** Engine management unit. ECU or equivalent.
- 2. Engine:** The internal moving parts of the engine, with the exception of the cooling system.
- 3. Rear axle:** The internal moving parts of the final drive.
- 4. Steering system:** Servo pump, steering shaft and steering gear. Not electronics.
- 5. Braking system:** Main brake cylinder, brake servo, brake booster and brake fluid reservoir.
- 6. ABS system:** ABS hydraulic unit and data box for the ABS system.
- 7. Electrical system:** Starter motor and alternator.
- 8. Transmission:** The internal moving parts of the transmission.
- 9. Injection system:** Temperature sensors, pulse sensors, atmospheric pressure sensors and mass airflow meter.
- 10. Turbocharger/compressor:** The internal moving parts of the unit.
- 11. Fuel system:** Fuel pump in tank, pressure valves and tank assembly.
- 12. Powertrain:** Drive shafts and propeller shafts. Unbroken rubber gaiters, Hardy disc or support bearing.
- 13. Air conditioning:** Compressor, condenser and air conditioning data box.
- 14. Airbag system:** All airbags, sensors and data box.
- 15. Passenger compartment electronics:** Electric windows, electric sunroof (not panoramic roofs), indicator system, windscreen wiper motor, cruise control (standard version), ignition module for Xenon.
- 16. Exhaust system:** Exhaust, not catalytic converter or particulate filter.
- 17. Clutch:** Slave cylinder, master cylinder, clutch cable, clutch bearing.
- 18. Four-wheel drive:** All components relating to the four-wheel drive.
- 19. Engine cooling system:** Radiator, cooling fan motor, temperature sensor.
- 20. Materials:** Consumables in connection with warranty repairs.
- 21. Towing:** If the problem is covered by the warranty, Svensk Bilgaranti will pay the excess for towing to your nearest workshop.

#### Duty of care

The owner of the vehicle must contact a specialist workshop or AB Svensk Bilgaranti immediately, without fail, in the event of any problem or damage that may be covered by the warranty.

#### Excess

No excess in the event of problems.

#### Term

The validity period of the warranty is written on the relevant warranty certificate.

#### Repairs

When repairs are approved, the problem will be remedied and your car will be returned to its original condition, just as it was before the problem occurred. All problems must be reported in writing to AB Svensk Bilgaranti on our website for problem reporting. After that, AB Svensk Bilgaranti will let you know which workshop is to carry out your warranty repairs. If repairs are carried out without written consent from AB Svensk Bilgaranti, AB Svensk Bilgaranti will not pay the cost of the repairs.

#### Maintenance

For the warranty to be valid, the vehicle must have been maintained and continue to be maintained according to the manufacturer's instructions throughout the entire warranty period. While the warranty is valid, servicing and any warranty repairs must be performed by the selling company or a workshop designated by this. All maintenance must be carried out professionally and documented without fail in the vehicle's original service book, and it must be possible for this book to be inspected by us upon request. The warranty does not cover problems caused by using components that are not fitted to the car as standard. Parts that can be expected to wear as part of their normal function are not covered by the warranty.

#### Exceptions

High oil consumption and chains. The warranty does not cover problems occurring as a result of external damage, an overheated engine, racing in a competition, sabotage, negligence, fire, theft, corrosion, leakage, collision or normal wear and tear. Cars designed for commercial use such as taxis or courier vehicles are not covered by this warranty. If the car has valid engine insurance cover, this is an excess exemption provided that the problem is covered by the warranty terms. The warranty provides no compensation for additional expenses such as hire cars, taxis, hotels, etc.

#### Other terms and conditions

The date on which AB Svensk Bilgaranti receives the damage report is considered to be the date on which the problem has occurred. Before travelling abroad, please contact AB Svensk Bilgaranti for a review of the warranty terms while abroad. All warranties taken out are linked with the vehicle in question and remain with that vehicle. The warranty will be cancelled if the vehicle is sold or transferred to a car dealer. No warranty is applicable without a valid warranty certificate from AB Svensk Bilgaranti.

#### Car models covered by the warranty

An updated list can be found at [www.svenskibilgaranti.com](http://www.svenskibilgaranti.com) the vehicle must be tested and approved by an authorised KVD representative.

If you have any questions, please contact our technical department for further information on tel. +46 (0) 31 27 70 40



AB Svensk Bilgaranti 1710