



# AirPrime Intelligent Embedded Modules

## Hardware Integration Guide



**SIERRA**  
WIRELESS

2130114  
Rev 3



---

## Important Notice

Due to the nature of wireless communications, transmission and reception of data can never be guaranteed. Data may be delayed, corrupted (i.e., have errors) or be totally lost. Although significant delays or losses of data are rare when wireless devices such as the Sierra Wireless modem are used in a normal manner with a well-constructed network, the Sierra Wireless modem should not be used in situations where failure to transmit or receive data could result in damage of any kind to the user or any other party, including but not limited to personal injury, death, or loss of property. Sierra Wireless accepts no responsibility for damages of any kind resulting from delays or errors in data transmitted or received using the Sierra Wireless modem, or for failure of the Sierra Wireless modem to transmit or receive such data.

## Safety and Hazards

Do not operate the Sierra Wireless modem in areas where blasting is in progress, where explosive atmospheres may be present, near medical equipment, near life support equipment, or any equipment which may be susceptible to any form of radio interference. In such areas, the Sierra Wireless modem **MUST BE POWERED OFF**. The Sierra Wireless modem can transmit signals that could interfere with this equipment.

Do not operate the Sierra Wireless modem in any aircraft, whether the aircraft is on the ground or in flight. In aircraft, the Sierra Wireless modem **MUST BE POWERED OFF**. When operating, the Sierra Wireless modem can transmit signals that could interfere with various onboard systems.

---

*Note: Some airlines may permit the use of cellular phones while the aircraft is on the ground and the door is open. Sierra Wireless modems may be used at this time.*

---

The driver or operator of any vehicle should not operate the Sierra Wireless modem while in control of a vehicle. Doing so will detract from the driver or operator's control and operation of that vehicle. In some states and provinces, operating such communications devices while in control of a vehicle is an offence.

## Limitation of Liability

The information in this manual is subject to change without notice and does not represent a commitment on the part of Sierra Wireless. SIERRA WIRELESS AND ITS AFFILIATES SPECIFICALLY DISCLAIM LIABILITY FOR ANY AND ALL DIRECT, INDIRECT, SPECIAL, GENERAL, INCIDENTAL, CONSEQUENTIAL, PUNITIVE OR EXEMPLARY DAMAGES INCLUDING, BUT NOT LIMITED TO, LOSS OF PROFITS OR REVENUE OR ANTICIPATED PROFITS OR REVENUE ARISING OUT OF THE USE OR INABILITY TO USE ANY SIERRA WIRELESS PRODUCT, EVEN IF SIERRA WIRELESS AND/OR ITS AFFILIATES HAS BEEN ADVISED OF THE POSSIBILITY OF SUCH DAMAGES OR THEY ARE FORESEEABLE OR FOR CLAIMS BY ANY THIRD PARTY.

Notwithstanding the foregoing, in no event shall Sierra Wireless and/or its affiliates aggregate liability arising under or in connection with the Sierra Wireless product, regardless of the number of events, occurrences, or claims giving rise to liability, be in excess of the price paid by the purchaser for the Sierra Wireless product.

## Patents

This product includes technology licensed from QUALCOMM® 3G  
 Manufactured or sold by Sierra Wireless or its licensees under one or more patents licensed from InterDigital Group.

## Copyright

©2010 Sierra Wireless. All rights reserved.

## Trademarks

Watcher® is a registered trademark of Sierra Wireless. Sierra Wireless™, AirPrime™ and the Sierra Wireless logo are trademarks of Sierra Wireless.

Windows® is a registered trademark of Microsoft Corporation.

Other trademarks are the property of their respective owners.

## Contact Information

Sales Desk:	Phone:	1-604-232-1488
	Hours:	8:00 AM to 5:00 PM Pacific Time
	E-mail:	sales@sierrawireless.com
Post:	Sierra Wireless 13811 Wireless Way Richmond, BC Canada V6V 3A4	
Fax:	1-604-231-1109	
Web:	www.sierrawireless.com	

Consult our website for up-to-date product descriptions, documentation, application notes, firmware upgrades, troubleshooting tips, and press releases:

[www.sierrawireless.com](http://www.sierrawireless.com)

## Revision History

Revision number	Release date	Changes
1.5	July 2007	<ul style="list-style-type: none"> <li>Added 8780/81 content</li> <li>Added SED description</li> <li>Fixed details about capacitance</li> <li>Added connector pin details</li> </ul>
1.6	Unreleased	

Revision number	Release date	Changes
1.7	April 2008	<ul style="list-style-type: none"> <li>Removed references to RUIM (MC57xx products)</li> <li>Removed "Diversity antenna must fold down" (<a href="#">Diversity antenna design requirements</a> on page 94).</li> <li>Removed references to MC5720, MC8755, MC8755V, and MC8765.</li> <li>Corrected LED characteristics (<a href="#">Faster blink</a> on page 59)</li> <li>Added content for MC5725, MC5725V, and MC8785V</li> </ul>
1.8	September 2008	<ul style="list-style-type: none"> <li>Added content for MC8790, MC8790V, MC8791V, and MC8792V</li> </ul>
1.9	October 2008	<ul style="list-style-type: none"> <li>Added AT command entry timing note and Linux content to testing chapter</li> <li>Corrected range for external pull up resistor in <a href="#">Figure 5-2</a> on page 60</li> </ul>
1.10	February 2009	<ul style="list-style-type: none"> <li>Added MC5728V</li> <li>Added AUX (HAC) and TTY to supported operating modes</li> </ul>
1.11	July 2009	<ul style="list-style-type: none"> <li>Added Brazil regulatory details</li> <li>Added MC8700</li> <li>Removed MC8785V</li> </ul>
1.12	Unreleased	
1.13	December 2009	<ul style="list-style-type: none"> <li>Added MC8795V</li> <li>Removed GPS from MC8700</li> </ul>
1.14	March 2010	<ul style="list-style-type: none"> <li>Added <a href="#">MC5728V Important Signal Considerations - Application Note</a> on page 103.</li> <li>Updated the MC5728V info: <a href="#">Electrostatic discharge (ESD)</a> on page 18; CDMA transmitting and shutdown numbers (<a href="#">Table 2-3, Current specifications (MC57xx)</a>, on page 27).</li> <li>Updated <a href="#">Figure 4-2, MC5728V Audio system block</a>, on page 52.</li> <li>Uses new template (layout/formatting changes)</li> </ul>
2.0	April 2010	<ul style="list-style-type: none"> <li>Added MC8201</li> <li>Additional branding/formatting changes</li> <li>Removed MC5725/25V</li> <li>Removed sensitivity graphs for UMTS devices</li> <li>Improved presentation of UMTS device RF Parameters (<a href="#">Table 3-2</a> on page 39)</li> </ul>
3	November 2010	<ul style="list-style-type: none"> <li>Added MC8355, MC8704, MC8705, MC8801</li> </ul>



# »» Contents

<b>Introduction</b> .....	<b>11</b>
The Universal Development Kit .....	12
Required connectors .....	12
Guide organization .....	12
Related documents .....	13
<b>Power Interface</b> .....	<b>17</b>
Overview of operation .....	17
Power signals .....	17
Electrostatic discharge (ESD) .....	18
Module power states .....	18
Disconnected state .....	19
Off state .....	19
Normal state .....	19
Low power state .....	19
Voltage monitoring state machine .....	20
Temperature monitoring state machine .....	22
Inrush currents .....	24
Timing requirements .....	25
Power ramp-up .....	25
Power-up timing .....	25
Transmit power wave form (GSM) .....	26
Current consumption .....	26
Current consumption overview .....	27
Modes .....	37
SED (Smart Error Detection) .....	37
Usage models .....	38
<b>RF Integration</b> .....	<b>39</b>
RF connection .....	41

Ground connection . . . . .	42
Shielding . . . . .	42
Antenna and cabling . . . . .	42
Interference and sensitivity . . . . .	43
Power supply noise . . . . .	43
Interference from other wireless devices . . . . .	44
Device-generated RF . . . . .	44
Methods to mitigate decreased Rx performance . . . . .	45
Radiated sensitivity measurement. . . . .	45
Sierra Wireless' sensitivity testing and desensitization investigation . . .	45
OTA test chamber configuration . . . . .	46
Path loss calculation . . . . .	47
Positioning the DUT (Device Under Test) . . . . .	47
Sensitivity vs. frequency . . . . .	47
<b>Audio Interface (Analog/PCM) . . . . .</b>	<b>49</b>
System block diagrams . . . . .	50
MC5727V system block . . . . .	50
MC5728V system block . . . . .	51
MC8xxx system block . . . . .	52
Modes of operation . . . . .	53
Sidetone support . . . . .	53
Gain distribution. . . . .	54
Echo cancellation support . . . . .	54
Audio signal interface . . . . .	55
Audio function partitioning . . . . .	56
<b>Host/Module Interfaces . . . . .</b>	<b>57</b>
Host interface pin details . . . . .	57

USB interface . . . . .	57
USB handshaking . . . . .	58
LED output . . . . .	59
USIM interface . . . . .	60
USIM operation . . . . .	61
Extended AT commands . . . . .	62
<b>Thermal Considerations . . . . .</b>	<b>67</b>
<b>Design Checklist . . . . .</b>	<b>69</b>
<b>Testing . . . . .</b>	<b>71</b>
AT command entry timing requirement . . . . .	71
Acceptance testing. . . . .	71
Acceptance test requirements . . . . .	72
Acceptance test procedure . . . . .	72
Certification testing. . . . .	72
Production testing. . . . .	73
Suggested manual functional test procedure . . . . .	73
Suggested production test plan procedure . . . . .	74
Testing RF transmission path—MC57xx . . . . .	78
Testing RF transmission path—MC8xxx . . . . .	79
Testing RF Receive path—MC57xx . . . . .	81
Testing RF Receive path—MC8xxx . . . . .	83
Testing GPS Receiver—MC8775V . . . . .	85
Test Audio Loop-back—MC5727V/MC5728V/MC8775V/MC8790V/ MC8791V/MC8792V/MC8795V . . . . .	86
Quality assurance testing. . . . .	88
Suggested testing equipment. . . . .	88
<b>Antenna Specification . . . . .</b>	<b>91</b>
Required antennas. . . . .	91
Frequency bands . . . . .	92

Antenna design . . . . .	93
General antenna design requirements . . . . .	93
Main antenna design requirements . . . . .	94
Diversity antenna design requirements . . . . .	94
GPS antenna design requirements . . . . .	94
Testing . . . . .	95
Voltage Standing Wave Ratio (VSWR) . . . . .	95
Radiated efficiency . . . . .	96
Antenna-to-antenna isolation . . . . .	96
Peak gain and radiation patterns . . . . .	97
Fading correlation coefficient . . . . .	97
<b>Regulatory Information. . . . .</b>	<b>99</b>
Important notice . . . . .	99
Safety and hazards . . . . .	99
Important compliance information for North American users. . . . .	100
EU regulatory conformity . . . . .	101
Brazil ANATEL homologation . . . . .	102
<b>MC5728V Important Signal Considerations - Application Note . . . . .</b>	<b>103</b>
MDL_RESET_N — Module reset input . . . . .	103
W_Disable# — Wireless disable . . . . .	104
<b>Acronyms and Definitions . . . . .</b>	<b>105</b>
<b>Index. . . . .</b>	<b>107</b>

# 1: Introduction

Sierra Wireless' AirPrime Intelligent Embedded Modules form the radio component for the products in which they are embedded. [Table 1-1](#) identifies embedded modules that are available for use on CDMA and GSM networks.

**Table 1-1: CDMA and UMTS AirPrime Intelligent Embedded Modules**

Device	Networks	Network standards	GPS features					
			Stand-alone	gpsOne	gpsOneXTRA	A-GPS	Nav2.0	NMEA sentences
MC5727 MC5727V MC5728V	CDMA	CDMA IS-95 1X 1xEV-DO (IS-856)	✓	✓		✓	✓	✓
MC8201	GSM	GSM, GPRS, EDGE, UMTS, HSDPA						
MC8355	GSM	GSM, GPRS, EDGE, UMTS, HSDPA, HSUPA, HSPA+ CDMA2000 1xRTT, EV-DO Rev.A	✓					
MC8700	GSM	GSM, GPRS, EDGE, UMTS, HSDPA, HSUPA, HSPA+						
MC8704 MC8705	GSM	GSM, GPRS, EDGE, UMTS, HSDPA, HSUPA, HSPA+	✓		✓	✓	✓	✓ (5)
MC8775 MC8775V	GSM	GSM, GPRS, EDGE, UMTS, HSDPA	✓					
MC8780 MC8781 MC8790 MC8790V MC8791V MC8792V MC8795V	GSM	GSM, GPRS, EDGE, UMTS, HSDPA, HSUPA	✓		✓	✓	✓	✓ (5)
MC8801	GSM	GSM, GPRS, EDGE, UMTS, HSDPA, HSUPA, HSPA+	✓		✓	✓	✓	✓ (5)

*Note: Throughout this document, MC57xx and MC8xxx refer to the entire suites (as listed in [Table 1-1](#)) of CDMA and UMTS AirPrime embedded modules respectively.*

---

*Note: An understanding of network technology, and experience in integrating hardware components into electronic equipment is assumed.*

---

## Purpose of this guide

This guide addresses issues that affect the integration of AirPrime embedded modules into host products, and includes design recommendations for the host products.

## The Universal Development Kit

Sierra Wireless manufactures a Universal Development Kit (UDK) that facilitates all phases of the integration process.

This kit is a hardware development platform that is designed to support the AirPrime embedded modules listed in [Table 1-1](#) on page 11. It contains the hardware components that are typically necessary for evaluating and developing with the module, including:

- Development board
- Cables
- Antennas
- Other accessories

For instructions on setting up the UDK, see *PCI Express Mini Card Dev Kit Quick Start Guide (Document 2130705)*.

## Required connectors

---

*Note: Contact vendors before choosing your connectors—the numbers included here are for reference only. Choose connectors that are appropriate to your design.*

---

When integrating AirPrime embedded modules into your host device, you need the following connector types:

- RF cables that mate with Hirose U.FL connectors (model U.FL #CL331-0471-0-10). Modules include one to three connector jacks depending on individual module support for diversity or GPS functionality.
- Industry-standard mating connector for 52-pin EDGE—some manufacturers include Tyco, Foxconn, and Molex. For example, the connector used on the Mini Card Dev Kit board is a Molex 67910-0001.
- Industry-standard USIM connector (MC8xxx only)—the actual connector you use depends on how your device exposes the USIM socket. For example, the USIM connector used on the Mini Card Dev Kit board is an ITT CCM03-3518.

## Guide organization

This guide includes the following sections:

1. **Introduction** (this section)
2. [Power Interface](#) on page 17  
Describes power control signals used by the module and discusses design issues related to power supply integration.
3. [RF Integration](#) on page 39  
Describes antenna connection methods and grounding issues, RF interference and desense issues.

4. [Audio Interface \(Analog/PCM\)](#) on page 49  
Describes supported audio modes and related details.
5. [Host/Module Interfaces](#) on page 57  
Describes the USB interface for host/module communication, and the USIM interface for host/module integration.
6. [Thermal Considerations](#) on page 67  
Describes thermal characteristics of the module and provides suggestions for testing and addressing thermal issues.
7. [Design Checklist](#) on page 69  
Summarizes design considerations for integration of AirPrime embedded modules in your host devices.
8. [Testing](#) on page 71  
Describes suggested acceptance, certification, production, and quality assurance tests.
9. [Antenna Specification](#) on page 91  
Describes antenna requirements and testing details.
10. [Regulatory Information](#) on page 99  
Describes regulatory approvals and regulatory information requirements.
11. [MC5728V Important Signal Considerations - Application Note](#) on page 103  
Describes important signal considerations regarding MDL\_RESET\_N and W\_Disable# signals of the MC5728V module.
12. [Acronyms and Definitions](#) on page 105  
Lists acronyms and definitions used throughout this guide.
13. [Index](#) on page 107

---

*Note: The term "host" always refers to the host device.*

---

## Related documents

This guide deals specifically with hardware integration issues that are unique to AirPrime embedded modules.

[Table 1-2](#) lists other documents referenced in this guide.

**Table 1-2: Related documentation**

Document title	Description
AT Command Set for User Equipment (UE) (Release 6) (3GPP TS 27.007)	Standard AT <a href="#">commands</a> for GSM/UMTS devices.
CDMA 1X Standard (CDMA 200 Series Release A (2000) - Document #T1A/E1A/IS-2000 Series, Release A)	Technical requirements for CDMA systems, including details on sleep cycle index (SCI) values.
CDMA CnS Reference (Document 2130754)	CnS (Control and Status) messages supported by AirPrime CDMA embedded modules.

**Table 1-2: Related documentation (Continued)**

Document title	Description
CDMA AT Command Reference (Document 2130620)	Proprietary, basic AT commands for AirPrime CDMA embedded modules. For UMTS-specific commands, see <i>AirCard/AirPrime UMTS devices Supported AT Command Reference (Document 2130617)</i> .
CDMA Extended AT Command Reference (Document 2130621)	Proprietary AT commands for AirPrime CDMA embedded modules. For UMTS-specific commands, see <i>AirPrime MC8xxx Embedded Modules Extended AT Command Reference (Document 2130616)</i> .
FCC Regulations - Part 15 - Radio Frequency Devices	This section of the FCC Code of Federal Regulations, Title 47 deals with radio frequency devices, including shielding requirements for embedded modules.
IEC-61000-4-2 level 3	Techniques for testing and measuring electrostatic discharge (ESD) immunity.
MC5727 Mini Card Product Specification (Document 2130958)	Features, mechanical and electrical specifications, and standards compliance of the MC5727.
MC5727V Mini Card Product Specification (Document 2131023)	Features, mechanical and electrical specifications, and standards compliance of the MC5727V.
MC5728V Mini Card Product Specification (Document 2111350)	Features, mechanical and electrical specifications, and standards compliance of the MC5728V.
MC8201 PCI Express Mini Card Product Specification (Document 2131362)	Features, mechanical and electrical specifications, and standards compliance of the MC8201.
AirPrime MC8355 PCI Express Mini Card Product Specification (Document 2400087)	Features, mechanical and electrical specifications, and standards compliance of the MC8355.
MC8700 PCI Express Mini Card Product Specification (Document 2131202)	Features, mechanical and electrical specifications, and standards compliance of the MC8700.
AirPrime MC8704 PCI Express Mini Card Product Specification (Document 2400057)	Features, mechanical and electrical specifications, and standards compliance of the MC8704.
AirPrime MC8705 PCI Express Mini Card Product Specification (Document 2400059)	Features, mechanical and electrical specifications, and standards compliance of the MC8705.
MC8775 PCI Express Mini Card Product Specification (Document 2130697)	Features, mechanical and electrical specifications, and standards compliance of the MC8775.
MC8775V with Audio PCI Express Mini Card Product Specification (Document 2130700)	Features, mechanical and electrical specifications, and standards compliance of the MC8775V.
MC8780 / MC8781 PCI Express Mini Card Product Specification (Document 2130782)	Features, mechanical and electrical specifications, and standards compliance of the MC8780/MC8781.
MC8790 PCI Express Mini Card Product Specification (Document 2111279)	Features, mechanical and electrical specifications, and standards compliance of the MC8790.
MC8790V PCI Express Mini Card Product Specification (Document 2111280)	Features, mechanical and electrical specifications, and standards compliance of the MC8790V.
MC8791V PCI Express Mini Card Product Specification (Document 2131032)	Features, mechanical and electrical specifications, and standards compliance of the MC8791V.
MC8792V PCI Express Mini Card Product Specification (Document 2131033)	Features, mechanical and electrical specifications, and standards compliance of the MC8792V.

**Table 1-2: Related documentation (Continued)**

Document title	Description
MC8795V PCI Express Mini Card Product Specification (Document 2131276)	Features, mechanical and electrical specifications, and standards compliance of the MC8795V.
AirPrime MC8801 PCI Express Mini Card Product Specification (Document 2400068)	Features, mechanical and electrical specifications, and standards compliance of the MC8801.
MC87XX Modem CnS Reference (Document 2130602)	CnS (Control and Status) messages supported by AirPrime UMTS embedded modules.
MC87xx Modem CnS Reference (Voice) (Document 2130817)	Voice-related CnS (Control and Status) messages supported by voice-enabled AirPrime UMTS embedded modules (MC8775V, MC8790V, MC8791V, MC8792V, and MC8795V).
AirCard/AirPrime UMTS devices Supported AT Command Reference (Document 2130617)	Proprietary, basic AT commands for UMTS AirCard and AirPrime devices. For CDMA-specific commands, see the <i>CDMA AT Command Reference (Document 2130620)</i> .
AirPrime MC8xxx Embedded Modules Extended AT Command Reference (Document 2130616)	Proprietary AT commands for UMTS AirPrime embedded modules. For CDMA-specific commands, see the <i>CDMA Extended AT Command Reference (Document 2130621)</i> .
Mobile Station (MS) Conformance Specification; Part 4: Subscriber Interface Module (3GPP TS 11.10-4)	SIM testing methods.
PCI Express Mini Card Dev Kit Quick Start Guide (Document 2130705)	Setup and configuration of modules.
PCI Express Mini Card Electromechanical Specification Revision 1.1	
Universal Serial Bus Specification, Rev 2.0	



### Overview of operation

*Note: This chapter contains information for CDMA (MC57xx) and GSM (MC8xxx) AirPrime embedded modules.  
Information that is **unique** to specific module types is clearly identified.*

AirPrime embedded modules are designed to use a 3.3V (nominal) power supply (3.8V for the MC8201) provided by the host. It is the host's responsibility to provide safe and continuous power to the module at all times; the module does NOT have an independent power supply, or protection circuits to guard against electrical issues.

The host controls the module's power state using the W\_Disable# signal as shown in [Figure 2-1](#). The signal is driven low by the host to power off the module, or left floating (high impedance) to power on the module. The module also monitors its supply voltage and requests shutdown if the supply is insufficient (see [Voltage monitoring state machine](#) on page 20).

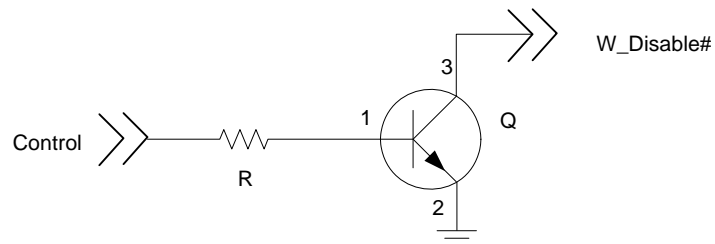


Figure 2-1: Recommended W\_Disable# connection (open drain circuit)

### Power signals

The module must be connected to a 3.3V power supply (3.8V for the MC8201), as described in *PCI Express Mini Card Electromechanical Specification Revision 1.1*.

The MC8xxx has more power pins than the MC57xx due to higher peak current requirements for GSM devices.

For detailed pinout and voltage/current requirements of these modules, see the Product Specification Document for your AirPrime embedded module (see [Table 1-2](#) on page 13).

*Note: The Product Specification Document's pin connection table describes the **internal** structure of the module. For example, a Mini Card standard-compliant host platform provides +3.3Vaux on pin 24, but this pin is not connected internally on the MC8775V. Thus, the pin is flagged as 'No connect'.*

## Electrostatic discharge (ESD)

You are responsible for ensuring that the host has adequate ESD protection on digital circuits and antenna ports as described by the following specifications:

- (Operational) RF port (antenna launch and RF connector): *IEC-61000-4-2—Level (Electrostatic Discharge Immunity Test)*
- (Non-operational) Host connector interface: *JESD22-A114-B +/- 1kV Human Body Model* and *JESD22-C101 +/- 125 V Charged Device Model*
- MC5728V only: (Non-operational) Host connector interface: *JESD22-A114-B +/- 125V Human Body Model* and *JESD22-C101 +/- 100 V Charged Device Model*

MC5728V has placeholders for additional ESD devices, for cases where the device must, per customer requirements, meet the higher Human Body Model (+/-1kV) ESD rating.

This guide provides specific recommendations where needed, however, the level of protection required depends on your application.

---

*Note: ESD protection is highly recommended for the USIM connector at the point where the contacts are exposed, and for any other signals from the host interface that would be subjected to ESD by the user of the product.*

---

## Module power states

---

*Note: The module unit defaults to the Normal state when VCC is first applied in the absence of W\_Disable# control.*

---

The module has four power states:

- Disconnected  
No power to the module.
- Off  
Power to the module, but the module is powered off.
- Normal  
The module is active. Several modes are possible (Receive, Transmit, Sleep, Shutdown).
- Low power (“airplane mode”)  
The module is active, but RF is disabled.

State machines are implemented in the module to monitor the power supply and operating temperature.

---

## Disconnected state

---

*Note: The difference between the Disconnected and Off states is that, in the Off state, the module is still connected to the power source and draws minimal current.*

---

This state occurs when there is no power to the module—the host power source is disconnected from the module and all voltages associated with the module are at 0 V.

Whether the host device is also powered off depends on the power rail design:

- If the connection between the power rail and the module is controlled by the host, the host can stay powered on and cut the power to put the module into the disconnected state.
- If the power rail is shared between the host device and the module, the host is powered off when the module is powered off.

## Off state

In this state, the host is powered up and the module is powered down (but still connected to the power source).

The host keeps the module powered off by driving the `W_Disable#` signal low. In this state, the module draws minimal current.

The module enters the Off state if `W_Disable#` is driven low and power (VCC) is applied to the module, or if the module is in a powered state and `W_Disable#` is driven low for a module-dependent minimum period. See [State change: Power off/on](#) on page 23 for details.

For additional MC5728V information, see [W\\_Disable# — Wireless disable](#) on page 104.

## Normal state

This is the active state of the module. In this state:

- The module is fully powered.
- The module is capable of placing/receiving calls or establishing data connections on the wireless network.
- The USB interface is fully active.

## Low power state

In this state (also called “airplane mode”), RF (both Rx and Tx) is disabled in the module, but the USB interface is still active. This state is controlled through the host interface by the following software commands:

- `+CFUN=0` command (*AT Command Set for User Equipment (UE) (Release 6)*)
- `CNS_RADIO_POWER [0x1075]` (*CDMA CnS Reference (Document 2130754)*)
- Disable Modem command (*MC87XX Modem CnS Reference (Document 2130602)*).

---

*Note: This is the default state when VCC is first applied in the absence of `W_Disable#` control.*

---

## Voltage monitoring state machine

Figure 2-2 illustrates the state machine used to monitor the VCC supply, and Table 2-1 details the voltage conditions that trigger state changes.

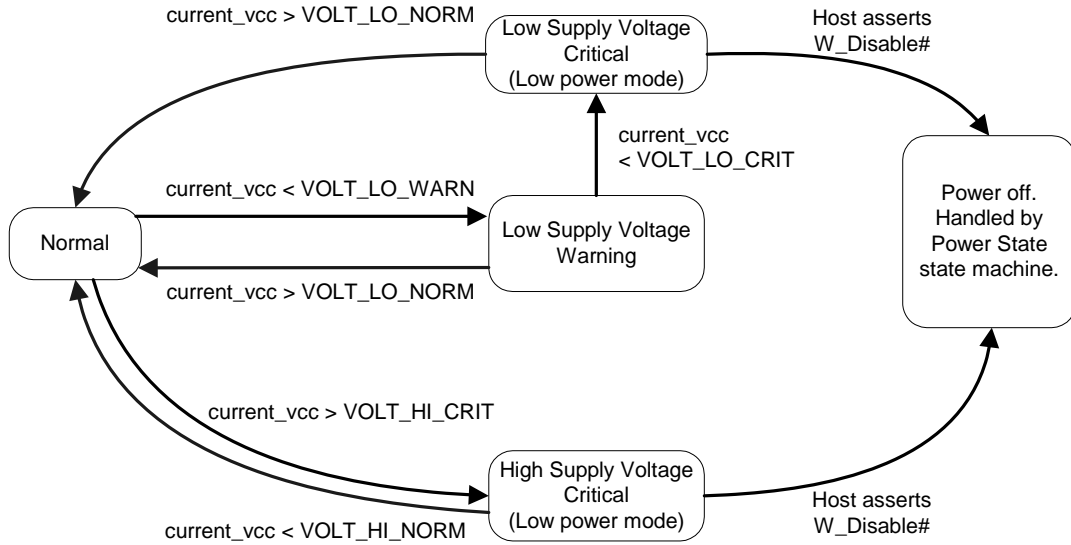


Figure 2-2: Voltage monitoring state machine

Table 2-1: Voltage trigger levels

Condition	Voltage (V)				
	VCC3.3 (3.0 V–3.6 V)				VCC3.8 (3.4–4.2)
	MC57xx	MC8775/75V MC8780 MC8781	MC8355 MC8700 MC8790/90V MC8791V MC8792V MC8795V MC8801	MC8704 MC8705	MC8201
VOLT_HI_CRIT	3.6	3.6	3.8	3.8	4.4
VOLT_HI_NORM	3.5	3.5	3.5	3.5	4.2
VOLT_LO_NORM	3.1	3.1	3.1	3.2	3.4
VOLT_LO_WARN	3.0	3.0	3.05	2.95	3.2
VOLT_LO_CRIT	2.9	2.9	3.00	2.9	3.1

## State change: Normal mode to Low Power mode

This state change causes the module to suspend RF activity. It occurs when the module's supply voltage exceeds either the high (VOLT\_HI\_CRIT) or low (VOLT\_LO\_CRIT) limits detailed in [Table 2-1](#) on page 20.

When this state change occurs, the CnS notification CNS\_RADIO\_POWER is issued, if enabled. For a detailed description of this notification, see *CDMA CnS Reference (Document 2130754)* or *MC87XX Modem CnS Reference (Document 2130602)* as appropriate.

## State change: Low Power mode to Normal mode

This state change causes the module to resume RF activity. It occurs when the module's supply voltage returns from critical to normal limits as described in [Table 2-1](#) on page 20 (VOLT\_HI\_NORM and VOLT\_LO\_NORM).

When this state change occurs, the CnS notification CNS\_RADIO\_POWER is issued, if enabled. For a detailed description of this notification, see *CDMA CnS Reference (Document 2130754)* or *MC87XX Modem CnS Reference (Document 2130602)* as appropriate.

## State change: Power off/on

---

*Note: The module is still connected to the power source in this state, drawing minimal power.*

---

The module begins a shutdown sequence and powers off if it has been in a powered-on state for more than 10.5 seconds and the host device drives the W\_Disable# signal low for:

- MC8775/MC8775V:  $\geq 50$  ms
- Other devices:  $\geq 500$  ms

---

*Note: The module ignores changes in the W\_Disable# line for the first 10.5 seconds after it enters a powered-on state.*

---

The module powers on when the host device leaves the W\_Disable# signal floating (high impedance) as shown in [Figure 2-1](#) on page 17.

[Figure 2-2](#) on page 20 shows the transition from 'Low Supply Voltage Critical' or 'High Supply Voltage Critical' to 'Power off':

1. The module enters low power mode because it detects that the supply voltage level is critically low (VOLT\_LO\_CRIT) or critically high (VOLT\_HI\_CRIT).
2. The module sends a CnS notification (Return Radio Voltage—0x0009) to the host indicating that it is now in low power mode.
3. The host has the option, at this point, of driving W\_Disable# low (forcing the module to power off) to prevent damage to the unit.

## Temperature monitoring state machine

Figure 2-3 illustrates the state machine used to monitor the embedded module's temperature, and Table 2-2 details the temperature conditions that trigger state changes.

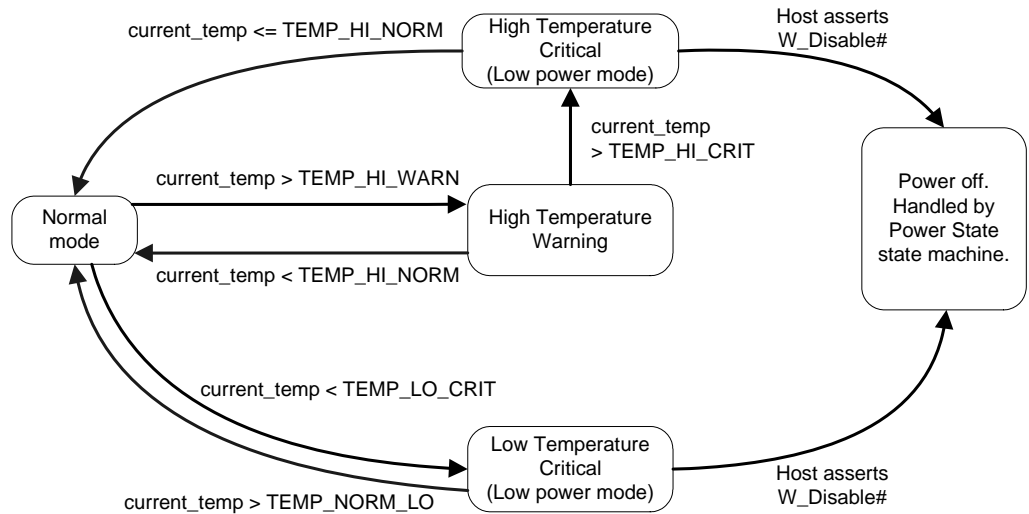


Figure 2-3: Temperature monitoring state machine

Table 2-2: Temperature trigger levels<sup>a</sup>

Condition	MC57xx Temp (°C)	MC8xxx Temp (°C)
TEMP_LO_CRIT	-30	-25
TEMP_NORM_LO	-20	-15
TEMP_HI_NORM	85	85
TEMP_HI_WARN	95	95
TEMP_HI_CRIT	108	108

a. Module-reported temperatures at the printed circuit board. Temperature decreases from 10°C–18°C between the PCB and the module shield, and a further 10°C–18°C between the shield and host environment (ambient), depending on the efficiency of heat-dissipation in the host device.

---

## State change: Normal mode to Low Power mode

This state change causes the module to suspend RF activity. It occurs when the module temperature exceeds either the high (TEMP\_HI\_CRIT) or low (TEMP\_LO\_CRIT) limits detailed in [Table 2-2 on page 22](#).

When this state change occurs, the CnS notification CNS\_RADIO\_POWER is issued, if enabled. For a detailed description of this notification, see *CDMA CnS Reference (Document 2130754)* or *MC87XX Modem CnS Reference (Document 2130602)* as appropriate. As well, the MC57xx issues the CnS notification Modem Too Hot [0x4500] if it has to drop a call when shifting to low power mode.

## State change: Low Power mode to Normal mode

This state change causes the module to resume RF activity. It occurs when the module temperature returns from critical to normal limits as described in [Table 2-2 on page 22](#) (TEMP\_HI\_NORM and TEMP\_LO\_NORM).

When this state change occurs, the CnS notification CNS\_RADIO\_POWER is issued, if enabled. For a detailed description of this notification, see *CDMA CnS Reference (Document 2130754)* or *MC87XX Modem CnS Reference (Document 2130602)* as appropriate.

## State change: Power off/on

The module begins a shutdown sequence and powers off if it has been in a powered-on state for more than 10.5 seconds and the host device drives the W\_Disable# signal low for:

- MC8775/MC8775V:  $\geq 50$  ms
- Other devices:  $\geq 500$  ms

---

*Note: The module ignores changes in the W\_Disable# line for the first 10.5 seconds after it enters a powered-on state.*

---

The module powers on when the host device leaves the W\_Disable# signal floating (high impedance) as shown in [Figure 2-1 on page 17](#).

[Figure 2-3 on page 22](#) shows the transition from 'Low Temperature Critical' or 'High Temperature Critical' to 'Power off'.

1. The module enters low power mode because it detects that the operating temperature is critically low (TEMP\_LO\_CRIT) or critically high (TEMP\_HI\_CRIT).
2. The module sends a CnS notification (Return Radio Temperature—0x0008) to the host indicating that it is now in low power mode.
3. The host has the option, at this point, of driving W\_Disable# low (forcing the module to power off) to prevent damage to the unit.

---

*Note: (MC57xx only) If the ambient temperature of the module exceeds 60°C, the RF level is automatically lowered for max power transmission.*

---

## Inrush currents

The following power events can cause large inrush currents from the host supply to the module on the power pins:

- Application of the host’s power supply
- Host leaves W\_Disable# floating (high impedance) to power up the module (as shown in Figure 2-1 on page 17).

Figure 2-4 and Figure 2-5 show the inrush models for the MC57xx and MC8xxx. Application of the host’s power supply typically occurs when the switch is open; W\_Disable# is left floating (high impedance) when the switch is closed.

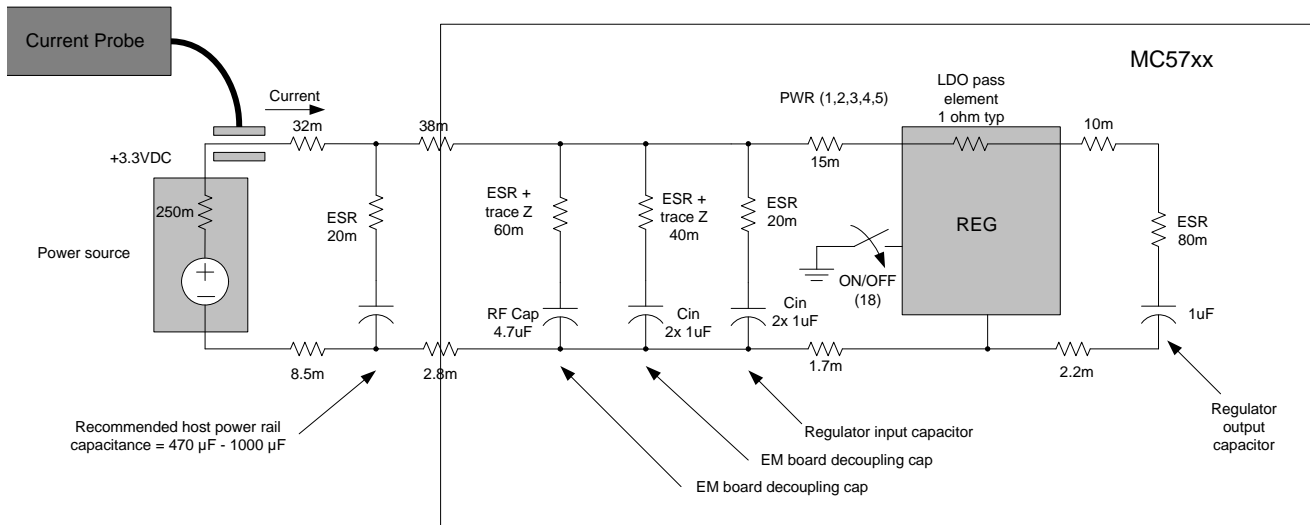


Figure 2-4: Inrush model - MC57xx

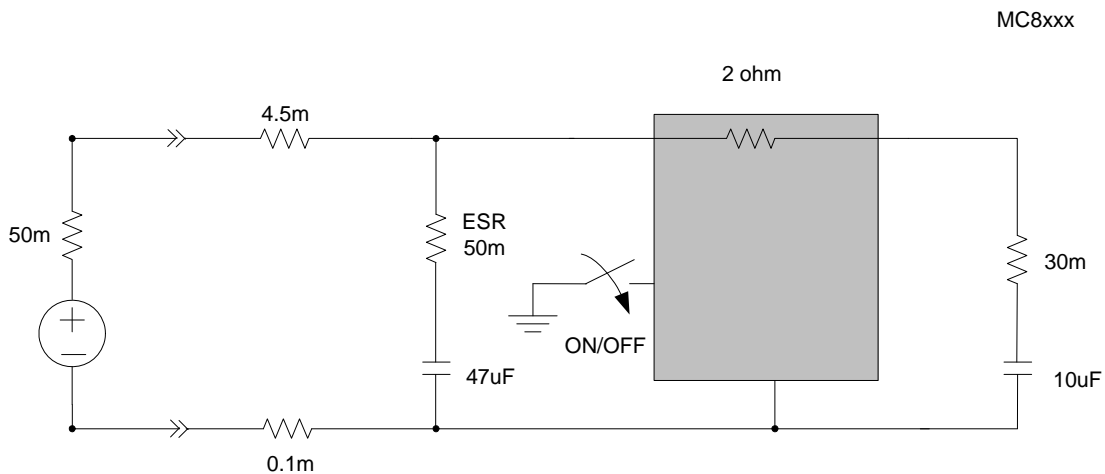


Figure 2-5: Inrush model - MC8xxx

## Inrush current via application of host power supply

This event occurs when the host's supply is enabled, charging the input capacitors on the embedded module's power rail. The switches shown in [Figure 2-4](#) on page 24 and [Figure 2-5](#) on page 24 are open (typically) when this event occurs.

---

*Note: In some circumstances, depending on temperature and the components in use, two or more regulators may switch on at the same time. The host power system must be designed to handle this possibility.*

---

To limit the inrush current and stabilize the supply of power to the module, sufficient capacitance must be added to the host power rail. The recommended capacitance range is 470–1000  $\mu\text{F}$ .

Peak current (IPEAK) is calculated using:

$$I_{PEAK} = V_{CC} / R_{SERIES}$$

$$R_{SERIES} = \text{impedance from power source (+ive) through to the Regulator output capacitor} \\ + \text{(impedance from power source (-ive) through to GND pins of the EM regulator)}$$

## Inrush current via floating W\_Disable#

The second event type occurs when the host leaves the W\_Disable# signal floating (high impedance) to power up the module. The switches shown in [Figure 2-4](#) on page 24 and [Figure 2-5](#) on page 24 are closed when this event occurs. This enables the power management system of the module, charging several internal regulator output capacitors.

When W\_Disable# is left floating (high impedance), the peak current is less than 500 mA (with a 30  $\mu\text{s}$  rise time).

## Timing requirements

### Power ramp-up

During the first 0.5 seconds, as the internal voltage regulators are activated in sequence, several current transients of up to 500 mA with a 30  $\mu\text{s}$  rise time may occur.

The supply voltage must remain within specified tolerances while this is occurring.

### Power-up timing

The unit is ready to enumerate with a USB host within a maximum of 5.1 seconds (depending on module type) after power-up. (Most modules enumerate within 4 seconds.) [Figure 2-6](#) on page 26 illustrates the power-up timing sequence.

---

*Note: The actual startup time may vary between the different module types (for example, MC5727 versus MC8775).*

---

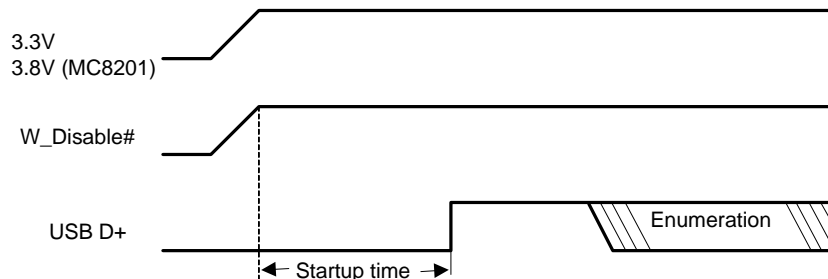


Figure 2-6: Power-up timing diagram

Note: Startup time is the time after power-up when the modem is ready to begin the enumeration sequence.

## Transmit power wave form (GSM)

As shown in Figure 2-7, at maximum GSM transmit power, the input current can remain at 2.4 A for up to 25% of each 4.6 ms GSM cycle (1.15 ms). For Class 12 operation, the peak could remain for 2.3 ms (four timeslots).

The 2.4 A current draw is for 50 ohm systems (1:1 VSWR). For worst-case antenna designs, such as 3.5:1 VSWR (as stated in Table 2-9 on page 33), this current draw could increase from 2.4 A to 2.75 A, as shown in the diagram. Beyond 3.5:1 VSWR (recommended worst case), the current draw could increase beyond 2.75 A to 3.5 A.

At maximum GSM transmit power, the input current can remain at 2.4 A for up to 25% of each 4.6 ms GSM cycle (1.15 ms) after initially reaching a peak of 2.75 A average over 100 μs and with an instantaneous peak current of 3.5 A.

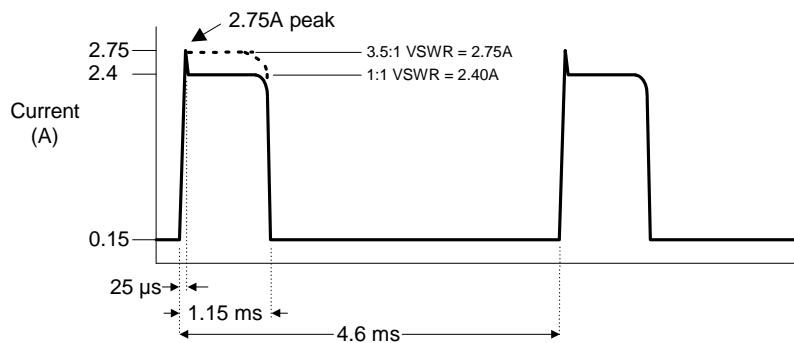


Figure 2-7: GSM transmit power wave form

## Current consumption

Current consumption depends on the module’s operating mode at any given time.

This section describes:

- Current consumption for both module types (MC57xx and MC8xxx)
- Operating modes

## Current consumption overview

*Note: Values in this guide are taken from the appropriate product specification documents (PSDs) (listed in Table 1-2 on page 13)—in the case of a discrepancy between this document and the relevant PSD, use the value listed in the PSD.*

Electrical requirements and current specifications are listed in the following tables:

- [Table 2-3](#) on page 27 (MC57xx)
- [Table 2-4](#) on page 28 (MC8201)
- [Table 2-5](#) on page 29 (MC8355)
- [Table 2-6](#) on page 29 (MC8700)
- [Table 2-7](#) on page 30 (MC8704/MC8705)
- [Table 2-8](#) on page 31 (MC8775/MC8775V)
- [Table 2-9](#) on page 33 (MC8780/MC8781)
- [Table 2-10](#) on page 34 (MC8790/MC8790V/MC8791V/MC8792V)
- [Table 2-11](#) on page 35 (MC8795V)
- [Table 2-12](#) on page 36 (MC8801)

These specifications identify minimum, typical, and maximum current drain for each operating mode (while in the Normal state):

- Transmit
- Receive
- Sleep
- Deep sleep
- Shutdown

The current consumption values in these tables were measured using a supply voltage of 3.3 V (3.8 V for MC8201). The device's supply voltage is 3.0–3.6 V with a typical voltage of 3.3 V (3.4–4.2 V with a typical voltage of 3.8 V for MC8201).

*Note: For sleep modes, the values shown are for the **actual** sleep state. The module wakes at intervals to control timing and check for traffic—at these moments the current consumption is higher.*

**Table 2-3: Current specifications (MC57xx)**

Condition	Current consumption (mA)		
	Min	Typical	Max
CDMA Transmitting (MC5727/MC5727V)	250	300	950
CDMA Transmitting (MC5728V) Current depends on the radio band in use and the network's control of the module's output power. The 'Typical' value is based on: <ul style="list-style-type: none"> <li>• 40% full rate, and</li> <li>• 60% 1/8<sup>th</sup> rate over -35 to +23.5 dBm.</li> </ul>	300	380	1000
CDMA Receiving (MC5727/MC5727V/MC5728V)	90	100	120

**Table 2-3: Current specifications (MC57xx) (Continued)**

Condition	Current consumption (mA)		
	Min	Typical	Max
CDMA Sleep, default slot cycle = 2 (MC5727/MC5727V)	1.4	1.7	1.75
CDMA Sleep, default slot cycle = 2 (MC5728V) The module supports slotted mode operation and Quick Paging Channel (both enable reduced sleep current). The values shown are the <i>lowest</i> power consumption during the sleep cycle. The default Slot Cycle Index (SCI) for slotted mode operation is determined by the PRI setting (usually 1).	1.9	2.1	5.6
Deep Sleep Average (MC5727/MC5727V/MC5728V)	0.5	0.7	1.5
Shutdown (MC5727/MC5727V)	0.25	0.30	0.35
Shutdown (MC5728V)	0.24	0.27	0.30

**Table 2-4: Current specifications (MC8201)<sup>a</sup>**

Description	Band	Typ	Max	Units	Notes / Configuration
<b>Averaged standby DC current consumption</b>					
<b>With Sleep mode activated</b> (assumes USB bus is fully suspended during measurements)					
HSDPA/WCDMA	Bands II, V	4	5	mA	DRX cycle = 8 (2.56 s)
GSM/GPRS/EDGE	GSM 850, GSM 1900	4	5	mA	MFRM = 5 (1.175 s)
<b>With Sleep mode deactivated</b> (assumes USB bus is fully suspended during measurements)					
HSDPA/WCDMA	Bands II, V	40	50	mA	DRX cycle = 8 (2.56 s)
GSM/GPRS/EDGE	GSM 850, GSM 1900	40	50	mA	MFRM = 5 (1.175 s)
<b>Low Power Mode (LPM)/Offline Mode</b>					
RF disabled, but module is operational		4	5	mA	This state is entered when Watcher <sup>®</sup> (or other application) shuts down/turns off the radio.
<b>Averaged Call Mode WCDMA/HSPA/HSPA+ data DC power consumption</b>					
WCDMA	Bands II, V	700		mA	384 kbps at 20 dBm Tx power <sup>b</sup>
		300		mA	0 dBm Tx power
HSDPA (1.8 Mbps/3.6 Mbps)		800		mA	All speeds at 20 dBm Tx power <sup>c</sup>
		370		mA	0 dBm Tx power
Peak current (averaged over 100 $\mu$ s)		720		mA	

Table 2-4: Current specifications (MC8201)<sup>a</sup> (Continued)

Description	Band	Typ	Max	Units	Notes / Configuration
<b>Averaged Call Mode GSM/EDGE data DC power consumption (with 4 time slots)</b>					
GSM/GPRS	GSM 850, GSM 1900	650		mA	Max PCL for each band <sup>d</sup>
		300		mA	10 dBm Tx
EDGE		620		mA	Class 12 <sup>d</sup>
Peak current (averaged over 100 $\mu$ s)		2.60		A	Worst case on 850.

- All measurements are preliminary values
- Highest current is on Band II (PCS1900)
- Approximate current difference between speeds = 30 mA
- Highest current is on 850 band Class 10 (Class 12 implements power backoff).

Table 2-5: Current specifications (MC8355)<sup>a</sup>

Description	Band	Typ	Max	Units	Notes / Configuration
<b>Averaged standby DC current consumption</b>					
<b>With Sleep mode activated</b> (assumes USB bus is fully suspended during measurements)					
TBD					
<b>With Sleep mode deactivated</b> (assumes USB bus is fully suspended during measurements)					
TBD					
<b>Low Power Mode (LPM)/Offline Mode</b>					
TBD					
<b>Averaged Call Mode WCDMA/HSPA/HSPA+ data DC power consumption</b>					
TBD					
<b>Averaged Call Mode GSM/EDGE data DC power consumption (with 4 time slots)</b>					
TBD					

- All measurements are preliminary values

Table 2-6: Current specifications (MC8700)<sup>a,b</sup>

Description	Band	Typ	Max	Units	Notes / Configuration
<b>Averaged standby DC current consumption</b>					
<b>With Sleep mode activated</b> (assumes USB bus is fully suspended during measurements)					
Not supported by this product.					
<b>With Sleep mode deactivated</b> (assumes USB bus is fully suspended during measurements)					
Not supported by this product.					

**Table 2-6: Current specifications (MC8700)<sup>a,b</sup> (Continued)**

Description	Band	Typ	Max	Units	Notes / Configuration	
<b>Low Power Mode (LPM)/Offline Mode</b>						
Not supported by this product.						
<b>Averaged Call Mode WCDMA/HSPA/HSPA+ data DC power consumption</b>						
WCDMA	Bands I, II, V, VI, VIII	700		mA	384 kbps at 20 dBm Tx power <sup>c</sup>	
		360		mA	0 dBm Tx power	
HSUPA		760		mA	2 Mbps at 20 dBm Tx power	
		470		mA	0 dBm Tx power	
HSDPA (1.8 Mbps/3.6 Mbps/ 7.2 Mbps)		820		mA	All speeds at 20 dBm Tx power <sup>d</sup>	
		450		mA	0 dBm Tx power	
HSPA+ (21.1 Mbps)		850		mA	20 dBm Tx power	
		500		mA	0 dBm Tx power	
Peak current (averaged over 100 $\mu$ s)			1000		mA	
<b>Averaged Call Mode GSM/EDGE data DC power consumption (with 4 time slots)</b>						
GSM/GPRS	Quad GSM	700		mA	Max PCL for each band <sup>e</sup>	
		400		mA	10 dBm Tx	
EDGE		720		mA	Class 12 <sup>e</sup>	
Peak current (averaged over 100 $\mu$ s)		2.70		A	Worst case on 850/900 band.	

a. All measurements are preliminary values

b. Measurements are for MDM8200 MDM2.0. Consumption levels for MDM8200 MDM1.1 will be slightly higher.

c. Highest current is on Band II (PCS1900)

d. Approximate current difference between speeds = 30 mA

e. Highest current is on 850/900 band Class 10 (Class 12 implements power backoff). Current on 1800/900 bands is typically 100–200 mA less.

**Table 2-7: Current specifications (MC8704/MC8705)<sup>a</sup>**

Description	Band	Typ	Max	Units	Notes / Configuration
<b>Averaged standby DC current consumption</b>					
<b>With Sleep mode activated</b> (assumes USB bus is fully suspended during measurements)					
HSDPA/UMTS	UMTS bands	4	5	mA	DRX cycle=8 (2.56 s)
GSM/GPRS/EDGE	GSM bands	4	5	mA	MFRM=5 (1.175 s)
<b>With Sleep mode deactivated</b> (assumes USB bus is fully suspended during measurements)					
HSDPA/UMTS	UMTS bands	40	50	mA	DRX cycle=8 (2.56 s)
GSM/GPRS/EDGE	GSM bands	40	50	mA	MFRM=5 (1.175 s)

**Table 2-7: Current specifications (MC8704/MC8705)<sup>a</sup> (Continued)**

Description	Band	Typ	Max	Units	Notes / Configuration	
<b>Low Power Mode (LPM)/Offline Mode</b>						
RF disabled; module is operational		4	5	mA	State is entered when Watcher (or other application) shuts down/turns off the radio.	
<b>Averaged Call Mode WCDMA/HSPA/HSPA+ data DC power consumption</b>						
WCDMA	Bands I, II, V, VI, VIII	700		mA	384 kbps at 20 dBm Tx power <sup>b</sup>	
		360		mA	0 dBm Tx power	
HSUPA		760		mA	2 Mbps at 20 dBm Tx power	
		470		mA	0 dBm Tx power	
HSDPA (1.8 Mbps/3.6 Mbps/ 7.2 Mbps)		820		mA	All speeds at 20 dBm Tx power <sup>c</sup>	
		450		mA	0 dBm Tx power	
HSPA+ (21.1 Mbps)		850		mA	20 dBm Tx power	
		500		mA	0 dBm Tx power	
Peak current (averaged over 100 $\mu$ s)			1000		mA	
<b>Averaged Call Mode GSM/EDGE data DC power consumption (with 4 time slots)</b>						
GSM/GPRS	Quad GSM	800		mA	Max PCL for each band <sup>d</sup>	
		400		mA	10 dBm Tx	
EDGE		720		mA	Class 12 <sup>e</sup>	
Peak current (averaged over 100 $\mu$ s)		2.70		A	Worst case on 850/900 band.	

a. All measurements are preliminary values

b. Highest current is on Band II (PCS1900)

c. Approximate current difference between speeds = 30 mA

d. Highest current is on 850/900 band Class 10 (Class 12 implements power backoff). Current on 1800/900 bands is typically 100–200 mA less.

**Table 2-8: Current specifications (MC8775/MC8775V)**

Description	Band	Typ	Max	Units	Notes / Configuration
<b>Averaged standby DC current consumption</b>					
<b>With Sleep mode activated</b> (assumes USB bus is fully suspended during measurements)					
HSDPA/WCDMA	Bands I, II, V	2.9	4	mA	DRX cycle = 8 (2.56 s)
GSM/GPRS/EDGE	Quad GSM	2.8	4	mA	MFRM = 5 (1.175 s)
<b>With Sleep mode deactivated</b> (assumes USB bus is fully suspended during measurements)					
HSDPA/WCDMA	Bands I, II, V	73	80	mA	DRX cycle = 8 (2.56 s)
GSM/GPRS/EDGE	Quad GSM	46	55	mA	MFRM = 5 (1.175 s)

**Table 2-8: Current specifications (MC8775/MC8775V) (Continued)**

Description	Band	Typ	Max	Units	Notes / Configuration
<b>Low Power Mode (LPM)/Offline Mode</b>					
RF disabled, but module is operational		2.5	4	mA	This state is entered when Watcher (or other application) shuts down/turns off the radio.
<b>Averaged WCDMA/HSDPA DC current consumption</b>					
WCDMA talk current (AMR 12.2 kbps vocoder)	Bands I, II, V	300	-	mA	0 dBm Tx power
		480	-	mA	+15 dBm Tx power
		650	-	mA	+21 dBm Tx power
WCDMA data current		330	-	mA	64 kbps UL/384 kbps DL, +0 dBm Tx power
WCDMA searching channels			180	mA	320 mA peak
HSDPA current		340	-	mA	0 dBm Tx power
Maximum peak talk current		-	1.2	A	Max RF output power, full rate, full operating temperature range
<b>Averaged GSM/EDGE DC current consumption</b>					
GSM Talk current (Full rate GSM vocoder, averaged over multiple Tx frames)	Quad GSM	300	-	mA	+5 dBm Tx power
		210	-	mA	+13 dBm Tx power
		300	-	mA	+29 dBm Tx power
	GSM850 & GSM900	360	-	mA	+33 dBm Tx power
GPRS current (+13 dBm Tx power, GPRS CS2, averaged over multiple Tx frames)	Quad GSM	180	-	mA	1 Rx/1 Tx slot
		180	-	mA	2 Rx/1 Tx slot
		240	-	mA	4 Rx/2 Tx slot
GSM/GPRS searching channels	Quad GSM		163	mA	489 mA peak
EDGE current (14 dBm Tx Power, averaged over multiple Tx frames)	Quad GSM	180	-	mA	1 Rx/1 Tx slot
		180	-	mA	2 Rx/1 Tx slot
		240	-	mA	4 Rx/2 Tx slot
Maximum Peak Talk current	Quad GSM	2.3	2.75	A	Max RF output power, Tx pulse current, full operating temperature range
<b>Miscellaneous DC current consumption</b>					
Module OFF leakage current	All	310	600	μA	Full operating temperature range
USB transmit current	All	-	10	mA	Full speed USB connection, C <sub>L</sub> = 50 pF on D+ and D- signals

Table 2-9: Current specifications (MC8780/MC8781)

Description	Band	Typ	Max	Units	Notes / Configuration
<b>Averaged standby DC current consumption</b>					
<b>With Sleep mode activated</b> (assumes USB bus is fully suspended during measurements)					
HSDPA/WCDMA	Bands I, II, V	3	4	mA	DRX cycle = 8 (2.56 s)
GSM/GPRS/EDGE	Quad GSM	3	4	mA	MFRM = 5 (1.175 s)
<b>With Sleep mode deactivated</b> (assumes USB bus is fully suspended during measurements)					
HSDPA/WCDMA	Bands I, II, V	46	50	mA	DRX cycle = 8 (2.56 s)
GSM/GPRS/EDGE	Quad GSM	50	55	mA	MFRM = 5 (1.175 s)
<b>Low Power Mode (LPM)/Offline Mode</b>					
RF disabled, but module is operational		3	4	mA	This state is entered when Watcher (or other application) shuts down/turns off the radio.
<b>(Maximum power) Averaged WCDMA/HSDPA data current consumption</b> (includes USB bus current)					
WCDMA	Bands I, II, V	800		mA	384 kbps at 20 dBm Tx power <sup>a</sup>
		300		mA	0 dBm Tx power
HSUPA		850		mA	2 Mbps at 20 dBm Tx power
		400		mA	0 dBm Tx power
HSDPA (1.8 Mbps/3.6 Mbps/ 7.2 Mbps)		850		mA	All speeds at 20 dBm Tx power <sup>b</sup>
		450		mA	0 dBm Tx power
<b>(Maximum power) Averaged GSM/EDGE data current consumption</b> (includes USB bus current)					
GSM/GPRS	Quad GSM	560		mA	Max PCL for each band <sup>c</sup>
		230		mA	10 dBm Tx
EDGE		520		mA	Class 12 <sup>c</sup>
Peak current (averaged over 100 μs)		2.75		A	Worst case on 850/900 band.

- Highest current is on Band II (PCS1900)
- Approximate current difference between speeds = 20 mA  
Example: Current(7.2 Mbps) = Current(3.6 Mbps) + 20 mA = Current(1.8 Mbps) + 40 mA
- Highest current is on 850/900 band Class 10 (Class 12 implements power backoff). Current on 1800/900 bands is typically 100–200 mA less.

**Table 2-10: Current specifications (MC8790/MC8790V/MC8791V/MC8792V)**

Description	Band	Typ	Max	Units	Notes/Configuration
<b>Averaged standby DC current consumption</b>					
<b>With Sleep mode activated</b> (assumes USB bus is fully suspended during measurements)					
HSDPA/WCDMA	MC8790/90V: Bands I, II, V, VI MC8791V: Band I MC8792V: Band I, II, VIII	4	5	mA	DRX cycle = 8 (2.56 s)
GSM/GPRS/EDGE	Quad GSM	4	5	mA	MFRM = 5 (1.175 s)
<b>With Sleep mode deactivated</b> (assumes USB bus is fully suspended during measurements)					
HSDPA/WCDMA	MC8790/90V: Bands I, II, V, VI MC8791V: Band I MC8792V: Band I, II, VIII	40	50	mA	DRX cycle = 8 (2.56 s)
GSM/GPRS/EDGE	Quad GSM	40	50	mA	MFRM = 5 (1.175 s)
<b>Low Power Mode (LPM)/Offline Mode</b>					
RF disabled, but module is operational		4	5	mA	State is entered when Watcher (or other application) shuts down/turns off the radio.
<b>Averaged Call Mode WCDMA/HSPA data DC power consumption</b>					
WCDMA	MC8790/90V: Bands I, II, V, VI MC8791V: Band I	700		mA	384 kbps at 20 dBm Tx power <sup>a</sup>
		300		mA	0 dBm Tx power
HSUPA	MC8792V: Band I, II, VIII	800		mA	2 Mbps at 20 dBm Tx power
		350		mA	0 dBm Tx power
HSDPA (1.8 Mbps/3.6 Mbps/ 7.2 Mbps)		800		mA	All speeds at 20 dBm Tx power <sup>b</sup>
		370		mA	0 dBm Tx power
Peak current (averaged over 100 μs)		720		mA	
<b>Averaged Call Mode GSM/EDGE data DC power consumption (with 4 time slots)</b>					
GSM/GPRS	Quad GSM	650		mA	Max PCL for each band <sup>c</sup>
		300		mA	10 dBm Tx
EDGE		620		mA	Class 12 <sup>c</sup>
Peak current (averaged over 100 μs)		2.6		A	Worst case on 850/900 band.

a. Highest current is on Band II (PCS1900)

b. Approximate current difference between speeds = 30 mA

c. Highest current is on 850/900 band Class 10 (Class 12 implements power backoff). Current on 1800/900 bands is typically 100–200 mA less.

Table 2-11: Current specifications (MC8795V)

Description	Band	Typ	Max	Units	Notes / Configuration	
<b>Averaged standby DC current consumption</b>						
<b>With Sleep mode activated</b> (assumes USB bus is fully suspended during measurements)						
HSDPA/WCDMA	Bands I, II, V, VI, VIII	4	5	mA	DRX cycle = 8 (2.56 s)	
GSM/GPRS/EDGE	Quad GSM	4	5	mA	MFRM = 5 (1.175 s)	
<b>With Sleep mode deactivated</b> (assumes USB bus is fully suspended during measurements)						
HSDPA/WCDMA	Band I, II, V, VI, VIII	40	50	mA	DRX cycle = 8 (2.56 s)	
GSM/GPRS/EDGE	Quad GSM	40	50	mA	MFRM = 5 (1.175 s)	
<b>Low Power Mode (LPM)/Offline Mode</b>						
RF disabled, but module is operational		4	5	mA	This state is entered when Watcher (or other application) shuts down/turns off the radio.	
<b>Averaged Call Mode WCDMA/HSPA data DC power consumption</b>						
WCDMA	Bands I, II, V, VI, VIII	700		mA	384 kbps at 20 dBm Tx power <sup>a</sup>	
		350		mA	0 dBm Tx power	
HSUPA		750		mA	2 Mbps at 20 dBm Tx power	
		420		mA	0 dBm Tx power	
HSDPA (1.8 Mbps/3.6 Mbps/ 7.2 Mbps)		750		mA	All speeds at 20 dBm Tx power <sup>b</sup>	
		410		mA	0 dBm Tx power	
Peak current (averaged over 100 $\mu$ s)			770		mA	
<b>Averaged Call Mode GSM/EDGE data DC power consumption (with 4 time slots)</b>						
GSM/GPRS	Quad GSM	650		mA	Max PCL for each band <sup>c</sup>	
		300		mA	10 dBm Tx	
EDGE		640		mA	Class 12 <sup>c</sup>	
Peak current (averaged over 100 $\mu$ s)			2.6		A	Worst case on 850/900 band.

a. Highest current is on Band II (PCS1900)

b. Approximate current difference between speeds = 30 mA

c. Highest current is on 850/900 band Class 10 (Class 12 implements power backoff). Current on 1800/900 bands is typically 100–200 mA less.

**Table 2-12: Current specifications (MC8801)<sup>a</sup>**

Description	Band	Typ	Max	Units	Notes / Configuration	
<b>Averaged standby DC current consumption</b>						
<b>With Sleep mode activated</b> (assumes USB bus is fully suspended during measurements)						
HSDPA/WCDMA	Bands I, II, V, VI, VIII	4	5	mA	DRX cycle = 8 (2.56 s)	
GSM/GPRS/EDGE	Quad GSM	4	5	mA	MFRM = 5 (1.175 s)	
<b>With Sleep mode deactivated</b> (assumes USB bus is fully suspended during measurements)						
TBD						
<b>Low Power Mode (LPM)/Offline Mode</b>						
RF disabled, but module is operational		4	5	mA	This state is entered when Watcher (or other application) shuts down/turns off the radio.	
<b>Averaged Call Mode WCDMA/HSPA/HSPA+ data DC power consumption</b>						
WCDMA	Bands I, II, V, VI, VIII	700		mA	384 kbps at 20 dBm Tx power <sup>b</sup>	
		360		mA	0 dBm Tx power	
HSUPA		700		mA	2 Mbps at 20 dBm Tx power	
		470		mA	0 dBm Tx power	
HSDPA (1.8 Mbps/3.6 Mbps/7.2 Mbps)		700		mA	All speeds at 20 dBm Tx power <sup>c</sup>	
		450		mA	0 dBm Tx power	
HSPA+ (21.1 Mbps)		TBD		mA	20 dBm Tx power	
		TBD		mA	0 dBm Tx power	
Peak current (averaged over 100 $\mu$ s)			1100		mA	
<b>Averaged Call Mode GSM/EDGE data DC power consumption (with 4 time slots)</b>						
GSM/GPRS	Quad GSM	650		mA	Max PCL for each band <sup>d</sup>	
		350		mA	10 dBm Tx	
EDGE		650		mA	Class 12 <sup>e</sup>	
Peak current (averaged over 100 $\mu$ s)		2.70		A	Worst case on 850/900 band.	

a. All measurements are preliminary values

b. Highest current is on Band II (PCS1900)

c. Approximate current difference between speeds = 30 mA

d. Highest current is on 850/900 band Class 10 (Class 12 implements power backoff). Current on 1800/900 bands is typically 100–200 mA less.

**Table 2-13: Miscellaneous DC power consumption (MC8xxx except MC8775/MC8775V)**

Signal	Description	Band	Module	Typ	Max	Units	Notes/Configuration
VCC	Module OFF leakage current	All bands	All (except MC8700)	400	600	μA	Full operating temperature range
			MC8700	200	700	μA	
	USB transmit current	All bands	All (except MC8700)	10	10	mA	Full speed USB connection, C <sub>L</sub> = 50 pF on D+ and D- signals
			MC8700	10	10	mA	

## Modes

### Transmit and Receive modes

Current consumption in transmit or receive mode (in a call or data connection) is affected by several factors, such as:

- Radio band being used
- Transmit power
- Receive gain settings
- Data rate
- Number of active Transmit time slots (for transmit mode)

### Sleep mode

Sleep mode is the normal state of the module between calls or data connections. In this reduced power mode, the module cycles between wake (polling the network) and sleep, at an interval determined by the network provider.

### Deep sleep

Deep sleep mode is a reduced power, out-of-network-coverage mode, that the module enters when it cannot acquire network service after several minutes.

The module then exits deep sleep periodically to try to acquire service, and if successful, attempts to register.

### Shutdown mode

While in shutdown mode, the module is powered off, but still draws a minimal current from the host power supply.

## SED (Smart Error Detection)

(MC8xxx only)

The MC8xxx modules use a form of SED to track recurrent premature modem resets. In such cases, the module automatically forces a pause in boot-and-hold mode at power-on to accept an expected firmware download to resolve the problem.

The SED process is implemented as follows:

- The module tracks consecutive resets within 30 seconds of power-on.
- After a third consecutive reset occurs, the module automatically waits up to 30 seconds in boot-and-hold mode, waiting for a firmware download to resolve the power-cycle problem.
- If no firmware download begins within 30 seconds, the module continues to power-on.
- If the module resets again within 30 seconds of power-on, it again waits in boot-and-hold mode.

This process continues until the unexpected power-cycle issue is resolved—either a firmware download occurs, or the module doesn't reset spontaneously within 30 seconds of power-on.

## Usage models

Usage models can be used to calculate expected current consumption. A sample usage model is provided in [Table 2-14](#), based on the values in [Table 2-3](#) on page 27 for a CDMA module.

**Table 2-14: Power consumption of sample application**

	Used by a field worker (data only)	Used for remote data logging
Upload (module Tx)	1000 kB/day	40 kB/h
Download (module Rx)	500 kB/day	100 kB/day
Coverage/data rate	1X/80 kbps	IS-95/14.4 kbps
Hours of operation	8 hrs/day (off 16 hrs/day)	24/day
Total power consumed over 24 hours	60 mAh	200 mAh

This example model applies to a battery-operated device. In practice, because the module is isolated from the battery (the host device manages the power source), the mAh ratings depend on the module's supply efficiency.

The module automatically enters slotted sleep mode when there is no transmission or reception occurring (SCI = 2).

Transmit power is assumed to be +3 dBm.

## 3: RF Integration

This chapter provides information related to RF (Radio Frequency) integration of AirPrime embedded modules with host devices. The frequencies of operation and performance specifications vary depending on the module model used. RF performance parameters for typical modules are listed in [Table 3-1](#) and [Table 3-2](#).

*Note: Values in this guide are taken from the appropriate product specification documents (PSDs) (listed in [Related documents](#) on page 13)—in the case of a discrepancy between this document and the relevant PSD, use the value listed in the PSD.*

**Table 3-1: Typical RF parameters (MC57xx)**

Band	Tx Band (MHz)	Tx Power (dBm)	Rx Band (MHz)	Rx Sensitivity (dBm)
<b>PCS</b>	1851–1910	+23 to +25	1930–1990	< -106
<b>Cellular</b>	824–849	+23 to +25	869–894	< -106
<b>GPS</b>			1575.42	SA Off: -148 SA On: -152

**Table 3-2: RF Parameters (MC8xxx)**

Module/Frequencies (MHz)	UMTS AirPrime embedded module (MC8xxx)														
	8201	8355	8700	8704	8705	8775	8775V	8780	8781	8790	9890v	8791V	8792V	8795V	8801
<b>GSM 850<sup>a</sup></b> <b>Tx: 824–849</b> <b>Rx: 869–894</b>	✓	✓	✓	✓	✓	✓	✓	✓	✓	✓	✓	✓	✓	✓	✓
	Conducted Rx sensitivity (dBm) <sup>b</sup> Worst case: -106 Typical: -108														
	Conducted Tx Power (dBm) +32 ± 1 (GMSK) +27 ± 1 (8PSK)														
<b>EGSM_900<sup>a</sup></b> <b>Tx: 880–915</b> <b>Rx: 925–960</b>	✗	✓	✓	✓	✓	✓	✓	✓	✓	✓	✓	✓	✓	✓	✓
	Conducted Rx sensitivity (dBm) <sup>b</sup> Worst case: -106 Typical: -108														
	Conducted Tx Power (dBm) +32 ± 1 (GMSK) +27 ± 1 (8PSK)														

Table 3-2: RF Parameters (MC8xxx) (Continued)

Module/Frequencies (MHz)	UMTS AirPrime embedded module (MC8xxx)														
	8201	8355	8700	8704	8705	8775	8775V	8780	8781	8790	9890v	8791V	8792V	8795V	8801
<b>DCS 1800<sup>a</sup></b> Tx: 1710–1785 Rx: 1805–1880	✗	✓	✓	✓	✓	✓	✓	✓	✓	✓	✓	✓	✓	✓	✓
	Conducted Rx sensitivity (dBm) <sup>b</sup> Worst case: -105 Typical: -107														
	Conducted Tx Power (dBm) +29 ± 1 (GMSK) +26 ± 1 (8PSK)														
<b>PCS 1900<sup>a</sup></b> Tx: 1850–1910 Rx: 1930–1990	✓	✓	✓	✓	✓	✓	✓	✓	✓	✓	✓	✓	✓	✓	✓
	Conducted Rx sensitivity (dBm) <sup>b</sup> Worst case: -105 Typical: -107														
	Conducted Tx Power (dBm) +29 ± 1 (GMSK) +26 ± 1 (8PSK)														
<b>Band I<sup>c</sup> (UMTS 2100)</b> Tx: 1920–1980 Rx: 2110–2170	✗	✓	✓	✓	✓	✓	✓	✓	✓	✓	✓	✓	✓	✓	✓
	Conducted Rx sensitivity (dBm) <sup>b</sup> Worst case: -108 Typical: -110														
	Conducted Tx Power (dBm) +23 ± 1														
<b>Band II<sup>b</sup> (UMTS 1900)</b> Tx: 1850–1910 Rx: 1930–1990	✓	✓	✓	✓	✓	✓	✓	✓	✓	✓	✓	✗	✓	✓	✓
	Conducted Rx sensitivity (dBm) <sup>b</sup> Worst case: -108 Typical: -110														
	Conducted Tx Power (dBm) +23 ± 1														
<b>Band V<sup>b,d</sup> (UMTS 850)</b> Tx: 824–849 Rx: 869–894	✓	✓	✓	✓	✓	✓	✓	✓	✓	✓	✓	✗	✗	✓	✓
	Conducted Rx sensitivity (dBm) <sup>b</sup> Worst case: -108 Typical: -110														
	Conducted Tx Power (dBm) +23 ± 1														
<b>Band VI<sup>b</sup> (UMTS 800)</b> Tx: 830–840 Rx: 875–885	✗	✓	✓	✓	✓	✗	✗	✗	✗	✓	✓	✗	✗	✓	✓
	Conducted Rx sensitivity (dBm) <sup>b</sup> Worst case: -108 Typical: -110														
	Conducted Tx Power (dBm) +23 ± 1														
<b>Band VIII<sup>b</sup> (UMTS 900)</b> Tx: 880–915 Rx: 925–960	✗	✓	✓	✓	✓	✗	✗	✗	✗	✗	✗	✗	✓	✓	✓
	Conducted Rx sensitivity (dBm) <sup>b</sup> Worst case: -108 Typical: -110														
	Conducted Tx Power (dBm) +23 ± 1														

Table 3-2: RF Parameters (MC8xxx) (Continued)

Module/Frequencies (MHz)	UMTS AirPrime embedded module (MC8xxx)														
	8201	8355	8700	8704	8705	8775	8775V	8780	8781	8790	9890v	8791V	8792V	8795V	8801
Band IV <sup>b</sup> (UMTS 1700/2100) Tx: 1710–1755 Rx: 2110–2155	✗	✓	✗	✗	✗	✗	✗	✗	✗	✗	✗	✗	✗	✗	✗
	Conducted Rx sensitivity (dBm) <sup>b</sup> Worst case: TBD Typical: TBD														
Conducted Tx Power (dBm) TBD															
GPS 1575.42	✗	✓	✗	✓	✓	✗	✓	✓	✓	✓	✓	✓	✓	✓	✓
	GPS conducted sensitivity (dBm): -154														

- a. (2%) CS
- b. All MC8xxx modules will conform to these limits. Individual models (as specified in their PSDs) may have stricter limits.
- c. (0.1%) 12.2 kbps
- d. Band VI is included as a subset of Band V.

## RF connection

When attaching an antenna to the module:

*Note: To **disconnect** the antenna, make sure you use the Hirose U.FL connector removal tool (P/N UFL-LP-N-2(01)) to prevent damage to the module or coaxial cable assembly.*

- Use a Hirose U.FL connector (model U.FL #CL331-0471-0-10) to attach an antenna to a connection point on the module, as shown in [Figure 3-1](#) (main RF, diversity RF, GPS, combined diversity/GPS).
- Match coaxial connections between the module and the antenna to 50 Ω.
- Minimize RF cable losses to the antenna; the recommended maximum cable loss for antenna cabling is 0.5 dB.

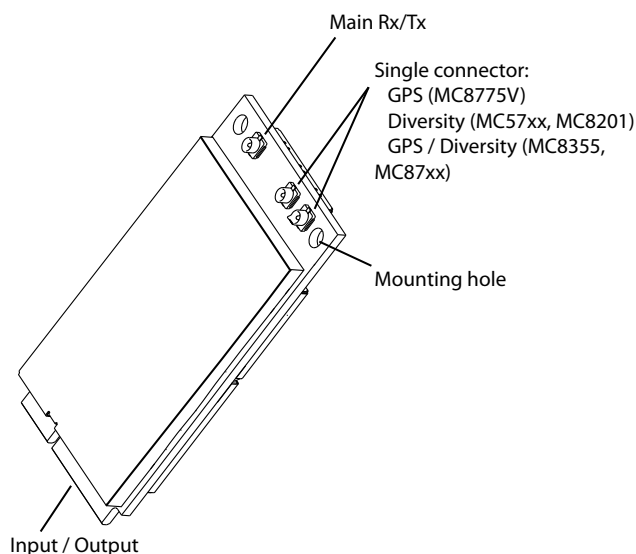


Figure 3-1: Antenna connection points and mounting holes

## Ground connection

When connecting the module to system ground:

- Prevent noise leakage by establishing a very good ground connection to the module through the host connector.
- Connect to system ground using the two mounting holes at the top of the module (shown in [Figure 3-1](#) on page 41).
- Minimize ground noise leakage into the RF.  
Depending on the host board design, noise could *potentially* be coupled to the module from the host board. This is mainly an issue for host designs that have signals traveling along the length of the module, or circuitry operating at both ends of the module interconnects.

## Shielding

The module is fully shielded to protect against EMI and to ensure compliance with FCC Part 15 - “Radio Frequency Devices” (or equivalent regulations in other jurisdictions).

---

*Note: The module shields must NOT be removed.*

---

---

*Note: Values in this guide are taken from the appropriate product specification documents (PSDs) (listed in [Related documents](#) on page 13)—in the case of a discrepancy between this document and the relevant PSD, use the value listed in the PSD.*

---

## Antenna and cabling

When selecting the antenna and cable, it is critical to RF performance to match antenna gain and cable loss.

### Choosing the correct antenna and cabling

Consider the following points for proper matching of antennas and cabling:

- The antenna (and associated circuitry) should have a nominal impedance of 50  $\Omega$  with a return loss of better than 10 dB across each frequency band of operation.
- The system gain value affects both radiated power *and* regulatory (FCC, IC, CE, etc.) test results.

### Developing custom antennas

Consider the following points when developing custom-designed antennas:

- A skilled RF engineer should do the development to ensure that the RF performance is maintained.
- Identify the bands that need to be supported, particularly when both CDMA (MC57xx) and UMTS (MC8xxx) modules will be installed in the same platform. In this case, you may want to develop separate antennas for maximum performance.

---

*Note: For detailed electrical performance criteria, see [Appendix A: Antenna Specification](#) on page 91.*

---

## Determining the antenna's location

Consider the following points when deciding where to put the antenna:

- Antenna location may affect RF performance. Although the module is shielded to prevent interference in most applications, the placement of the antenna is still very important—if the host device is insufficiently shielded, high levels of broadband or spurious noise can degrade the module's performance.
- Connecting cables between the module and the antenna must have 50  $\Omega$  impedance. If the impedance of the module is mismatched, RF performance is reduced significantly.
- Antenna cables should be routed, if possible, away from noise sources (switching power supplies, LCD assemblies, etc.). If the cables are near the noise sources, the noise may be coupled into the RF cable and into the antenna.

## Disabling the diversity antenna

- MC57xx—If your host device is not designed to use the MC57xx module's diversity antenna, terminate the interface with a 50  $\Omega$  load.
- MC8xxx—Use the AT command `!RXDEN=0` to disable receive diversity or `!RXDEN=1` to enable receive diversity.

## Interference and sensitivity

---

*Note: These modules are based on ZIF (Zero Intermediate Frequency) technologies. When performing EMC (Electromagnetic Compatibility) tests, there are no IF (Intermediate Frequency) components from the module to consider.*

---

Several sources of interference can affect the RF performance of the module (RF desense). Common sources include power supply noise and device-generated RF.

RF desense can be addressed through a combination of mitigation techniques and radiated sensitivity measurement.

## Power supply noise

Noise in the power supply can lead to noise in the RF signal.

The power supply ripple limit for the module is no more than 200 mVp-p 1 Hz to 100 kHz. This limit includes voltage ripple due to transmitter burst activity.

---

*Note: Values in this guide are taken from the appropriate product specification documents (PSDs) (listed in [Related documents](#) on page 13)—in the case of a discrepancy between this document and the relevant PSD, use the value listed in the PSD.*

---

## Interference from other wireless devices

Wireless devices operating inside the host device can cause interference that affects the module.

To determine the most suitable locations for antennas on your host device, evaluate each wireless device's radio system, considering the following:

- Any harmonics, sub-harmonics, or cross-products of signals generated by wireless devices that fall in the module's Rx range may cause spurious response, resulting in decreased Rx performance.
- The Tx power and corresponding broadband noise of other wireless devices may overload or increase the noise floor of the module's receiver, resulting in Rx desense.

The severity of this interference depends on the closeness of the other antennas to the module's antenna. To determine suitable locations for each wireless device's antenna, thoroughly evaluate your host device's design.

## Device-generated RF

---

*Note: The module can cause interference with other devices such as hearing aids and on-board speakers.*

*Wireless devices such as AirPrime embedded modules transmit in bursts (pulse transients) for set durations (RF burst frequencies). Hearing aids and speakers convert these burst frequencies into audible frequencies, resulting in audible noise.*

---

All electronic computing devices generate RF interference that can negatively affect the receive sensitivity of the module.

The proximity of host electronics to the antenna in wireless devices can contribute to decreased Rx performance. Components that are most likely to cause this include:

- Microprocessor and memory
- Display panel and display drivers
- Switching-mode power supplies

These and other high-speed devices (in particular, the processor) can decrease Rx performance because they run at frequencies of tens of MHz. The rapid rise and fall of these clock signals generates higher-order harmonics that often fall within the operating frequency band of the module, affecting the module's receive sensitivity.

## Example

On a sub-system running at 40 MHz, the 22nd harmonic falls at 880 MHz, which is within the cellular receive frequency band.

---

*Note: In practice, there are usually numerous interfering frequencies and harmonics. The net effect can be a series of desensitized receive channels.*

---

---

## Methods to mitigate decreased Rx performance

It is important to investigate sources of localized interference early in the design cycle. To reduce the effect of device-generated RF on Rx performance:

- Put the antenna as far as possible from sources of interference. The drawback is that the module may be less convenient to use.
- Shield the host device. The module itself is well shielded to avoid external interference. However, the antenna cannot be shielded for obvious reasons. In most instances, it is necessary to employ shielding on the components of the host device (such as the main processor and parallel bus) that have the highest RF emissions.
- Filter out unwanted high-order harmonic energy by using discrete filtering on low frequency lines.
- Form shielding layers around high-speed clock traces by using multi-layer PCBs.
- Route antenna cables away from noise sources.

## Radiated sensitivity measurement

A wireless device contains many sources of noise that contribute to a reduction in Rx performance.

To determine the extent of any desensitization of receiver performance due to self-generated noise in the host device, over-the-air (OTA) or radiated testing is required. This testing can be performed by Sierra Wireless or you can use your own OTA test chamber for in-house testing.

## Sierra Wireless' sensitivity testing and desensitization investigation

Most carriers require a certain level of receiver performance to ensure proper functioning of the device on their networks. Although AirPrime embedded modules have been designed to meet these carrier requirements, they are still susceptible to various performance inhibitors.

As part of the Engineering Services package, Sierra Wireless offers modem OTA sensitivity testing and desensitization (desense) investigation. For more information, contact your account manager or the Sales Desk (see [page 4](#)).

---

*Note: Sierra Wireless has the capability to measure TIS (Total Isotropic Sensitivity) and TRP (Total Radiated Power) according to CTIA's published test procedure.*

---

## OTA test chamber configuration

To make OTA measurements, a test chamber is required. A full-size anechoic chamber is not necessarily required. [Figure 3-2](#) shows a small anechoic chamber manufactured by Lindgren. This does not provide power to the same accuracy as a full-size anechoic chamber, but is sufficient for this application. A base station simulator, such as an Agilent 8960 (shown) or Rohde & Schwarz CMU200, is used to provide FER (Frame Error Rate) measurements.

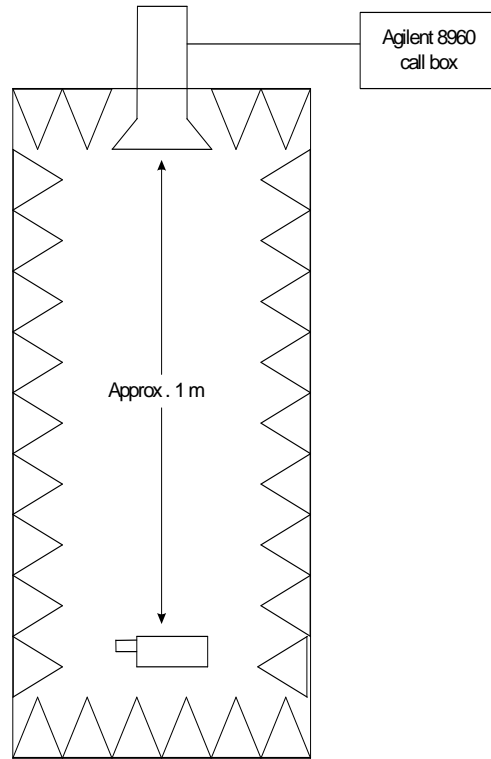


Figure 3-2: Anechoic chamber

---

## Path loss calculation

The chamber is calibrated for path loss using a reference antenna with known gain that is feeding a spectrum analyzer or power meter. This makes it possible to determine the radiated power available to the receiving antenna and the path loss:

$$\begin{aligned} \text{Radiated Power} = & \text{Measured received power} \\ & + \text{Any cable losses} \\ & - \text{Reference receive antenna gain} \end{aligned}$$

$$\begin{aligned} \text{Path Loss} = & \text{Radiated power} \\ & - \text{Input power} \end{aligned}$$

---

*Note: It is not necessary to know the gain of the transmitting antenna; it is included in the path loss.*

---

## Positioning the DUT (Device Under Test)

To achieve meaningful results, the device must be positioned such that the peak of the receive antenna pattern is pointed toward the source antenna. Theoretically, the best way to accomplish this is to modify the DUT so that antenna output is through coaxial cable. The device is then rotated until the receive power is maximized.

## Alternate path loss calculation method

Path loss can also be calculated, without modifying the DUT, by using the transmit capabilities of the unit. This method of calculation is possible because the position that maximizes transmitter power provides a sufficiently accurate location for receiver desense measurements.

The unit is placed in a call and set to generate peak output power, either through a test mode, or by configuring the base station simulator to issue the appropriate command.

The unit is then positioned for maximum power as determined by the call box.

## Sensitivity vs. frequency

For the MC57xx, sensitivity is defined as the input power level in dBm that produces a FER (Frame Error Rate) of 0.5%. Sensitivity should be measured at all CDMA frequencies across each band. For example, [Figure 3-3](#) on page 48 illustrates sensitivity in the US PCS band. There are 25 physical channels with a spacing of 50 KHz; the first CDMA channel is CH25.

For the MC8xxx, sensitivity is defined as the input power level in dBm that produces a BER (Bit Error Rate) of 2% (GSM) or 0.1% (UMTS). Sensitivity should be measured at all GSM / UMTS frequencies across each band.

### Sensitivity test results—MC57xx

Figure 3-3 shows typical test results for the US PCS band for both conducted and over-the-air connections. The conducted (or "connectorized") measurements were made using an RF coaxial cable connection. The over-the-air measurements were made using both an external antenna and a typical device antenna.

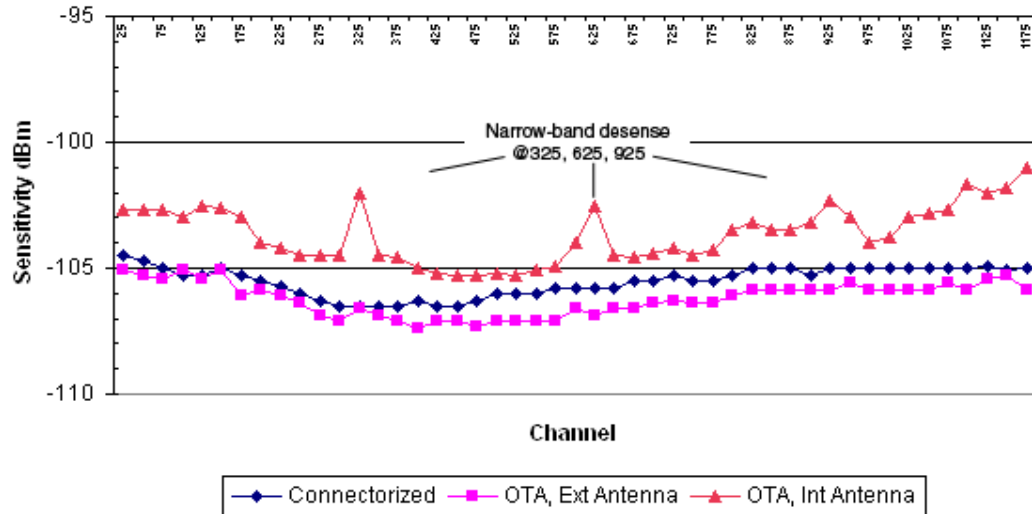


Figure 3-3: US PCS sensitivity measurements

In this test, the external antenna performed best—the expected result if a high efficiency antenna with some gain is used. The internal antenna has less gain than the external antenna, so the internal antenna's performance is offset above the external antenna. The antenna gain must be known to determine whether the offset is strictly the result of antenna gain or if broadband desense is present. Narrowband desense can be seen at channels 325, 625, and 925.

## 4: Audio Interface (Analog/PCM)

*Note: Values in this guide are taken from the appropriate product specification documents (PSDs) (listed in [Related documents](#) on page 13)—in the case of a discrepancy between this document and the relevant PSD, use the value listed in the PSD.*

This chapter applies to the following AirPrime embedded modules: MC5727V, MC5728V, MC8775V, MC8790V, MC8791V, MC8792V, and MC8795V. These modules support the following audio modes that may be required by a host audio system:

- Handset
- Headset
- Car kit
- Speakerphone
- AUX (MC5727V /MC5728V modules are preconfigured for HAC [Hearing Aid Compatibility])
- TTY

The modules support both a differential analog interface and PCM digital audio, and allow dynamic run-time selection of the appropriate mode.

[Table 4-1](#) summarizes the key audio features of these modules.

**Table 4-1: Embedded module audio features**

Feature	Transmit	Receive
Gain (adjustable)	MC5727V: <ul style="list-style-type: none"> <li>• MIC_AMP1: Programmable to 0 dB or +24 dB.</li> <li>• MIC_AMP2: Programmable from -6 dB to +25.5 dB in steps of 1.5 dB.</li> </ul> MC5728V: <ul style="list-style-type: none"> <li>• Programmable to 0 dB or +24 dB.</li> </ul> MC8xxx: <ul style="list-style-type: none"> <li>• Up to +48.5 dB analog gain available (when the analog interface is selected).</li> </ul>	Up to +12 dB
Filtering stages	Several adjustable high-pass and slope filters	High-pass filter
Noise suppression	Supported	n/a
Echo cancellation	Configurable for each audio mode (headset, handset, speakerphone, and car kit)	n/a
Output driver stage	n/a	Supported
FIR (Finite Impulse Response) filtering	MC8xxx: <ul style="list-style-type: none"> <li>• Option of providing 13 tap FIR filtering for receive and transmit paths to equalize the acoustic response of the speaker and microphone elements.</li> </ul>	
Audio pass band	300 Hz–3.4 kHz	

These modules are intended to serve as an integral component of a more complex audio system—for example, a PDA with a separate codec interfaced to the Host Application processor.

Usually, the interface between the module and the host audio system is set to line-level amplitudes with no transducer considerations. The responsibility of the module codec or host codec for special functions is detailed in [Table 4-2](#).

**Table 4-2: Codecs responsible for special functions**

Function	Responsible Codec
Phone oriented (e.g., echo cancellation, FIR filtering)	Module codec
Path-switching	Host codec
Transducer interfaces	Host codec
Adjustable gain/volume settings	Either
DTMF/ringer tone generation	Either
Mixing	Host codec

## System block diagrams

*Note: When integrating the module into your host platform, make sure the module has sufficient shielding to prevent RF interference.*

### MC5727V system block

[Figure 4-1](#) on page 51 represents the MC5727V module's audio system block, and includes the following features:

- Module interconnects are shown on the left side of the diagram. The audio interface uses the signals:
  - MIC\_P/MIC\_N
  - SPK\_P/SPK\_N
- Dynamic ranges for each programmable gain stage are listed, with the following constraints:
  - MIC\_AMP1 is programmable in discrete steps only
  - MIC\_AMP2 (MC5727V only) is programmable in discrete steps only
  - CodecSTGain, when set to the minimum setting, effectively mutes sidetone in the module codec

*Note: Make sure the host device includes DC blocking capacitors on the Audio In lines – the module does not include series capacitors.*

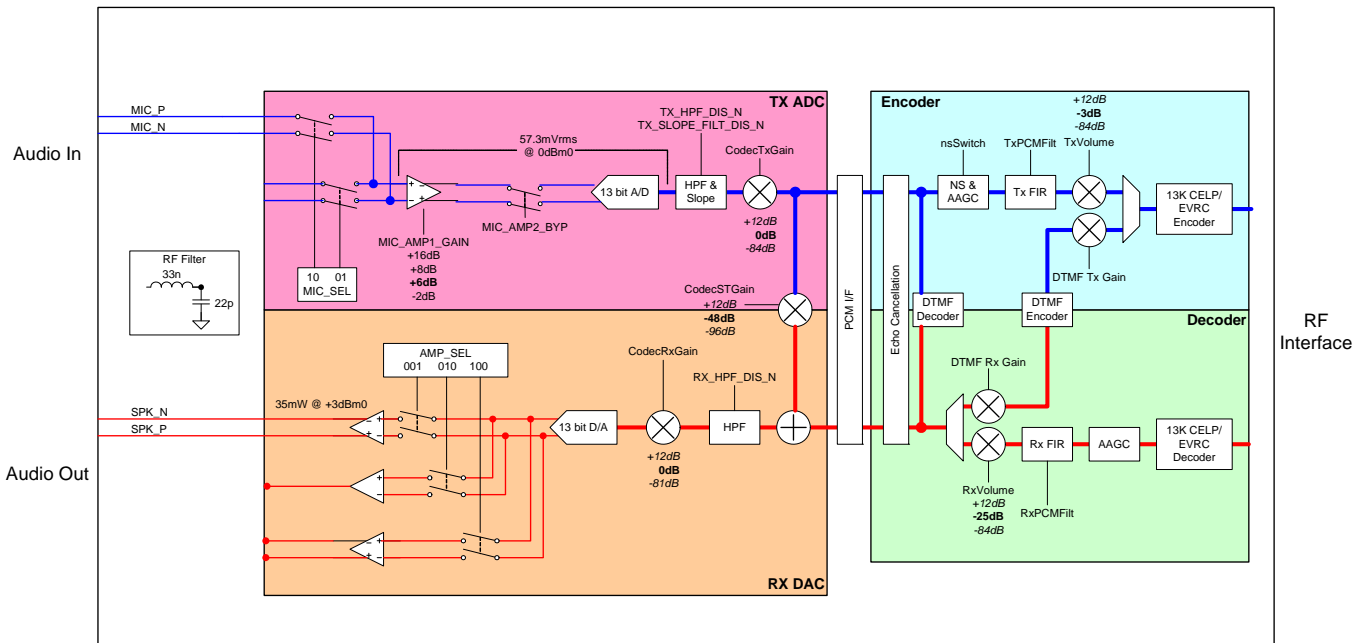


Figure 4-1: MC5727V Audio system block

## MC5728V system block

Figure 4-2 on page 52 represents the MC5728V module's audio system block, and includes the following features:

- Module interconnects are shown on the left side of the diagram. The audio interface uses the signals:
  - MIC\_P/MIC\_N
  - SPK\_P/SPK\_N
- Dynamic ranges for each programmable gain stage are listed, with the following constraints:
  - MIC\_AMP1 is programmable to 0 dB or +24 dB only
  - CodecSTGain, when set to the minimum setting, effectively mutes sidetone in the module codec

*Note: Make sure the host device includes DC blocking capacitors on the Audio In lines – the module does not include series capacitors.*

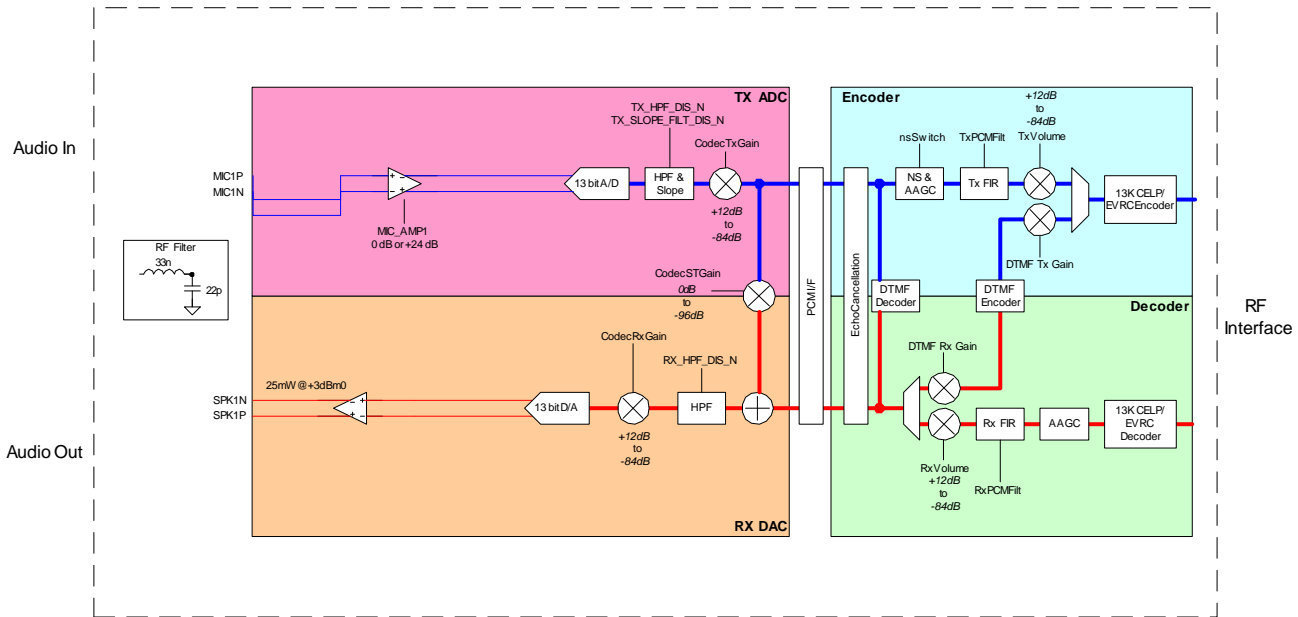


Figure 4-2: MC5728V Audio system block

## MC8xxx system block

Figure 4-3 on page 53 represents the MC8xxx module's audio system block, and includes the following features:

- Module interconnects are shown on the left side of the diagram. The analog audio interface uses the signals:
  - MIC\_P/MIC\_N
  - SPK\_P/SPK\_N
- The digital PCM audio interface uses the signals:
  - PCM\_CLK
  - PCM\_DIN
  - PCM\_DOUT
  - PCM\_SYNC
- Dynamic ranges for each programmable gain stage are listed, with the following constraints:
  - MIC\_AMP1 is programmable in 1.5 dB steps
  - CodecSTGain, when set to the minimum setting, effectively mutes sidetone in the module codec
- When PCM audio is selected, the RX DAC and TX ADC blocks are bypassed—the external PCM codec controls transmit gain, receive gain, and sidetone gain.

*Note: Make sure the host device includes DC blocking capacitors on the analog Audio In lines – the module does not include series capacitors.*

*Note: Data mixing is not supported. If mixing of voice signal is required, it must be done by the host processor.*

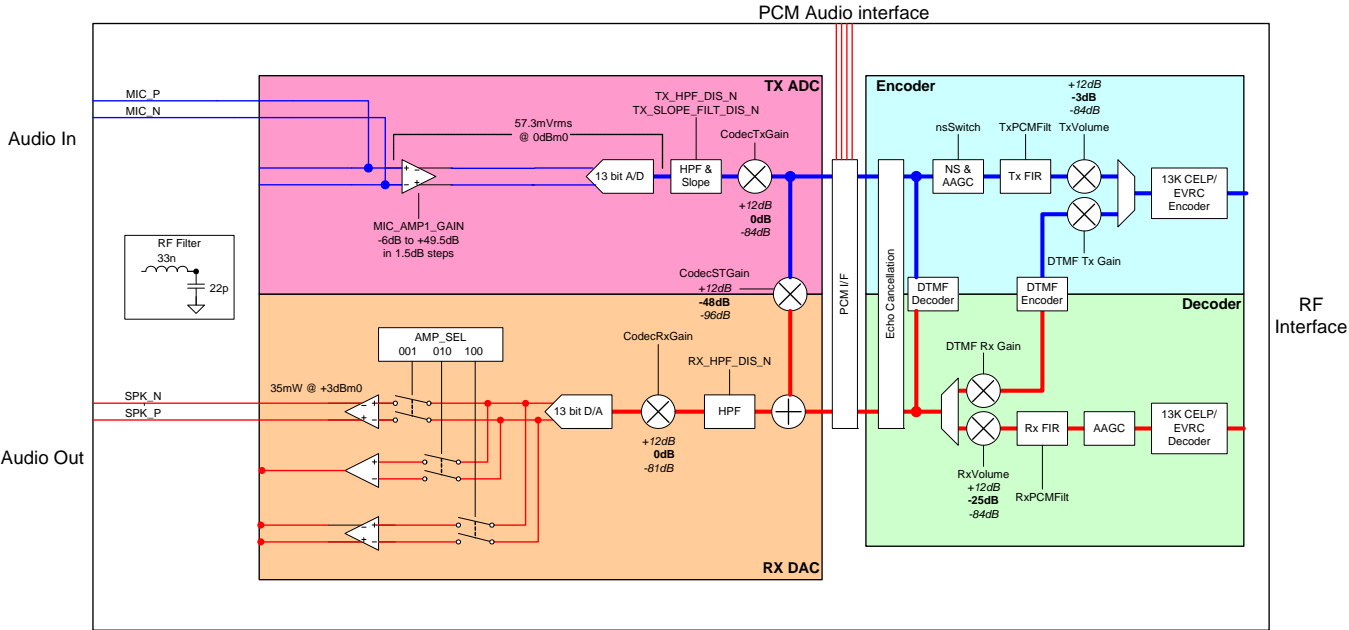


Figure 4-3: MC8xxx Audio system block

## Modes of operation

These modules support the following operational modes: headset, handset, car kit, speakerphone, AUX<sup>1</sup>, and TTY—end products can use any combination of these modes.

The host device must use host-modem messaging to tell the module which mode to use for each call.

## Sidetone support

The sidetone path mixes the near-end transmit voice to the near-end receive. This gives the near-end user some feedback that indicates that the call is up and that the audio system is functioning.

The sidetone path can be enabled in either the PDA codec or the embedded module—each path is equally valid. It should *not* be added to both devices, and for speakerphone or car kit applications, *both* sidetone paths should be disabled.

The typical handset sidetone is 12 dB below transmit voice levels.

1. MC5727V/MC5728V modules are preconfigured for HAC [Hearing Aid Compatibility].

## Gain distribution

Table 4-3: System gain values<sup>a</sup>

Mode	Modem TX gain (dB)	Modem RX gain (dB)	Typical system TX gain (dB)	Typical system RX gain (dB)
Handset	+8	+8	+28	+32
Headset	+8	+8	+28	+24
Car Kit	+16	+8	+36	+32
Speakerphone	+16	+8	+36	+32

a. Typical system gains are estimates only and vary from system to system depending upon transducer sensitivity.

For Handset and Headset mode, the threshold of pain (+120 dBSPL) *must not* be exceeded at the maximum volume setting. A good target for the medium volume setting is +94 dBSPL, as this is a typical level for conversational speech.

Most audio gain should be added to the host audio front end (within the PDA style codec gain blocks or amplifiers between the host codec and transducers). Refer to the appropriate Product Specification Document for reference levels on the modem receive and transmit side.

## Echo cancellation support

AirPrime embedded modules offer four modes of echo cancellation to support unique end-unit audio capabilities (echo cancellation can also be turned off completely). All echo cancellation is near-end (mobile TX) cancellation only. The network provides some level of far-end echo cancellation.

Table 4-4: Echo cancellation details

Mode	Details
Handset	<ul style="list-style-type: none"> <li>Short echo path (&lt;16 ms travel time from speaker to microphone)</li> <li>Handset design requires good isolation between speaker and microphone</li> <li>Echo canceller allows full-duplex conversation with absolute minimum echo</li> </ul>
Headset	<ul style="list-style-type: none"> <li>Short echo path (&lt;16 ms travel time from speaker to microphone)</li> <li>Headset design may allow higher echo than handset mode—microphone and speaker are physically closer</li> <li>More aggressive echo canceller algorithm allows full-duplex conversation on headsets with good isolation</li> </ul>

**Table 4-4: Echo cancellation details (Continued)**

Mode	Details
<b>Car kit</b>	<ul style="list-style-type: none"> <li>• Long echo path (&lt;64 ms travel time from speaker to microphone)</li> <li>• Loud echo</li> <li>• For use with hands-free car kit or speakerphone applications with mild distortion</li> </ul>
<b>Speakerphone</b>	<ul style="list-style-type: none"> <li>• Long echo path (&lt;64 ms travel time from speaker to microphone)</li> <li>• Loud echo</li> <li>• For use with speakerphone applications with high distortion</li> <li>• Half-duplex algorithm, very aggressive in near-end Tx muting to eliminate transmitted echo</li> </ul>
<b>Off</b>	

## Audio signal interface

The differential microphone input offers superior noise rejection performance to the single-ended approach. The termination of the differential pair rejects common signals (such as noise). The pair should be routed together for optimal noise rejection. Since MIC\_P and MIC\_N are high impedance inputs, it is important to isolate these from possible noise sources (toggling digital lines with fast edges).

The speaker interface can be single-ended or differential depending on product. Single-ended speaker outputs rely on modem ground as an audio reference.

The audio passband for both receive and transmit paths (speaker and microphone) extends from 300 Hz to 3.4 kHz. A programmable sidetone with a range from mute to unity gain is available for both headset and main audio paths. Sidetone should be muted for speakerphone use.

Note that certain carriers now require use of hearing-aid compatible transducers in a handset design. The Primary audio path can be interfaced directly to such devices. Refer to ANSI C63.19 for details regarding reduced RF emissions ("U3 rating") and inductive/telecoil coupling ("U3T rating") devices.

**Table 4-5: Primary audio signal interface**

Signal	Pin #	Type	Direction	Description
<b>MIC_P</b>	1	Analog	Input	Non-inverted microphone input (+)
<b>MIC_N</b>	3	Analog	Input	Inverted microphone input (-)
<b>SPK_P</b>	5	Analog	Output	Non-inverted speaker output (+)
<b>SPK_N</b>	7	Analog	Output	Inverted speaker output (-)

**Table 4-6: PCM digital audio signal interface**

Signal	Pin #	Type	Direction	Description
<b>PCM_CLK</b>	45	Digital	Output	PCM clock
<b>PCM_DIN</b>	47	Digital	Input (internal pull-down)	PCM data in
<b>PCM_DOUT</b>	49	Digital	Output	PCM data out
<b>PCM_SYNC</b>	51	Digital	Input (internal pull-down)	PCM sync

## Audio function partitioning

The following phone-oriented functions are usually under module control:

- FIR filters—Transmit and receive paths
- Noise suppression—Required due to high sensitivity and gain in transmit path
- Echo cancellation—Different for each audio path and environment (handset, headset, car kit, speakerphone)
- High pass filtering/slope filtering functions—Required per phone acoustic requirements
- AGC (Automatic Gain Control)—Normalizes audio volumes in varying acoustic environments
- DTMF tones—Generation and detection of DTMF tones is required in both directions of the phone interface
- Comfort noise—Low level noise injected into receiver path for user "connection" experience
- Simple ringers—Digital and analog tones, melody ringers, MIDI with limited memory storage

The following functions are typically performed in the host codec:

- Voice Memo—Performed by the host if significant memory storage is required
- Polyphonic ringtone—Host often supports WAV, MIDI formats with significant memory storage
- Audio path switching—Turn on audio path depending on user interface selection, or headset detection
- Audio path mixing—Required for voice memo recording and playback via multiple audio paths
- Transducer interface—Host provides acoustic drivers, must occur outside of path switching and mixing

These functions can be performed in either the host or module codec, depending on balance of component selection and engineering resources:

- Volume settings—Adjustable gain settings based on user interface selections
- Sidetone—Careful placement of sidetone gain control is required to prevent the need to adjust sidetone gain with varying volume settings

## 5: Host/Module Interfaces

# 5

This chapter provides information about specific host interface pin assignments, the host-module communication interface (USB interface), LED outputs, USIM interface, and lists extended AT commands that may be useful for hardware integration testing.

### Host interface pin details

Detailed connector pin information is available in the product specification documents for each module—refer to these documents when integrating modules into your host devices.

The following are specific integration considerations relating to the host interface connector pins:

- On any given interface (USB, USIM, etc.), leave unused inputs and outputs as no-connects.
- Pin 11 is a reference voltage rail on the following devices:
  - 2.6 V: MC8201, MC8775V, MC8790V, MC8791V, MC8792V, MC8795V
  - 1.8 V: MC8704, MC8705, MC8801

Reference the 2.6 V/1.8 V pins on these devices to the rail as the maximum limit.

### USB interface

The USB interface is the *only* path for communication between the host and module.

The interface complies with the *Universal Serial Bus Specification, Rev 2.0*.

Features of the USB interface include:

- Support for *full-speed* (12 Mbps) data rate
- Support for *high-speed* (480 Mbps) data rate (MC8201/MC8355/MC870x/MC879X/MC8801)
- Transfer of general, phone diagnostic, and over-the-air data between the module and the host
- Enumeration of the module as a set of Modem (MC57xx) or COM (MC57xx and MC8xxx) ports, using host Windows drivers
- Enumeration of the module as a set of /dev/ttyUSBn devices for Linux systems with the Sierra Wireless driver installed
- USB-compliant transceivers

## USB handshaking

---

*Note: If you are using Sierra Wireless drivers, you can skip this section—it is intended for developers who are creating their own USB drivers.*

---

The host must act as a USB host device to interface with the module.

The module uses the USB standard Suspend and Resume functions (described further) to control the sleep and wakeup states. For detailed specifications of Resume and Suspend, refer to *Universal Serial Bus Specification, Rev 2.0*.

### Suspending

The module supports USB Suspend mode.

When the module enters suspend mode, it shuts down the USB clock to save power.

While in the suspend state:

- The module provides power to the D+/- interface to signal its current state to the host device.
- The host must maintain the VCC\_3V3 voltage (VCC\_3V8 for MC8201)

Refer to *Universal Serial Bus Specification, Rev 2.0* for critical timing parameters for the suspend state.

### Resume

USB activity may be resumed by either the USB host or by the module.

If the host initiates USB activity:

1. The USB transceiver detects the change in bus activity and triggers the USB\_RESUME interrupt to the module's processor.
2. The module then enables its USB clock and responds to the host.

If the module initiates USB communication (Remote Wakeup):

1. The module enables its USB clock.
2. The module enables the USB transceiver.
3. The module sends the resume signal for at least 20 ms.

Refer to *Universal Serial Bus Specification, Rev 2.0* for critical timing parameters for the resume state.

### Host USB driver requirements

The USB driver on the host device must meet these critical requirements:

- The host USB driver must support remote wakeup, resume, and suspend operations as described in *Universal Serial Bus Specification, Rev 2.0*.
- The host USB driver must support serial port emulation. The module implements both 27.010 multiplexing and USB-CDC.

- When the host doesn't have any valid data to send, the host USB driver should NOT send any SOF tokens (start-of-frames) to the module. These tokens keep the module awake and cause unnecessary power consumption.

## LED output

The module drives the LED output according to the *PCI-Express Mini Card specification* (summarized in [Table 5-1](#)).

**Table 5-1: LED states**

State	Indicates	Characteristics
<b>Off</b>	Module is not powered.	Light is off.
<b>On</b>	Module is powered and connected, but not transmitting or receiving.	Light is on.
<b>Slow blink</b>	Module is powered and searching for a connection.	LED is flashing at a steady, slow rate. <ul style="list-style-type: none"> <li>250 ms <math>\pm</math> 25% ON period</li> <li>0.2 Hz <math>\pm</math> 25% blink rate</li> </ul>
<b>Faster blink</b>	Module is transmitting or receiving.	LED is flashing at a steady, faster rate. <ul style="list-style-type: none"> <li>Approximately 3 Hz blink rate</li> </ul>

*Note: MC572x modules support customer-defined LED controls.*

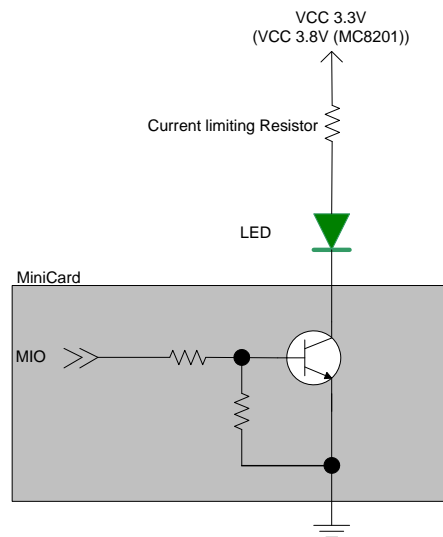


Figure 5-1: Example LED

## USIM interface

*Note: This section applies only to UMTS (MC8xxx) modules.*

The module is designed to support one USIM (Universal Subscriber Identity Module). The USIM holds account information, allowing users to use their account on multiple devices.

The USIM interface has four signals (plus Ground). These are defined in [Table 5-2](#) with an example circuit shown in [Figure 5-2](#). (For USIM card contacts, see [Figure 5-3](#) on page 61.)

**Table 5-2: USIM pins**

Pin name	USIM contact number	Function
XIM_VCC	1	USIM VCC
XIM_RESET	2	Active low USIM reset
XIM_CLK	3	Serial clock for USIM data
XIM_DATA	7	Bi-directional USIM data line
XIM_GND	5	Ground

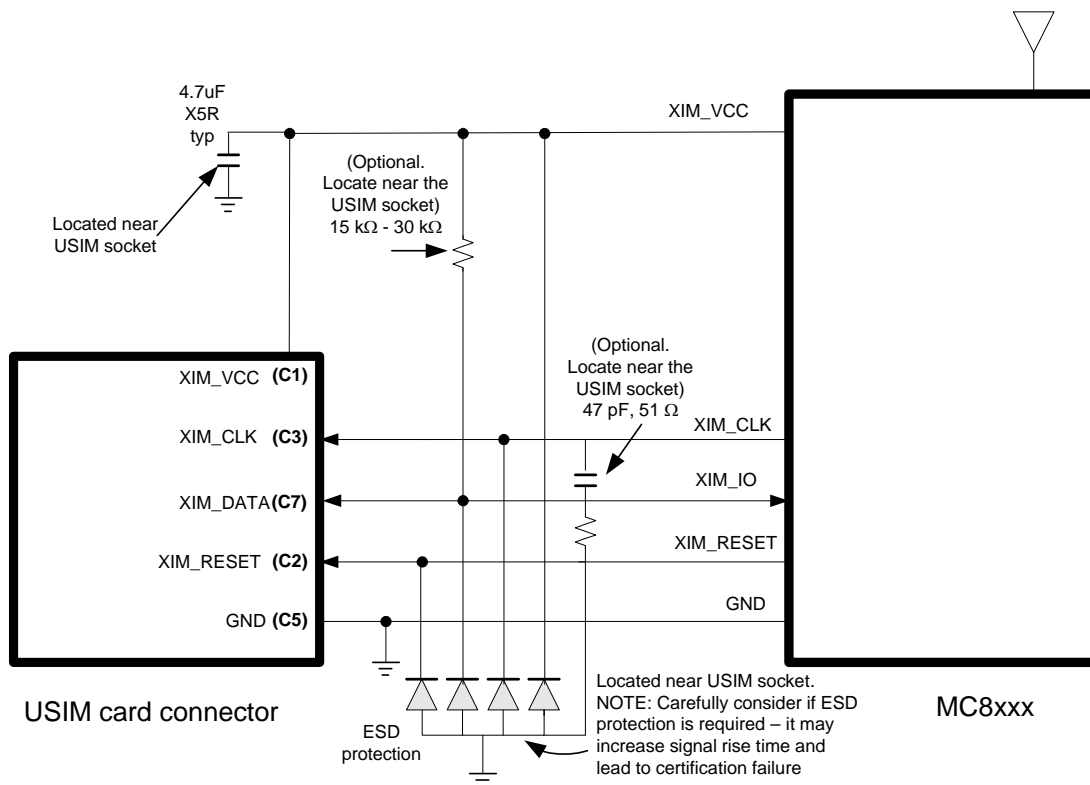


Figure 5-2: USIM application interface

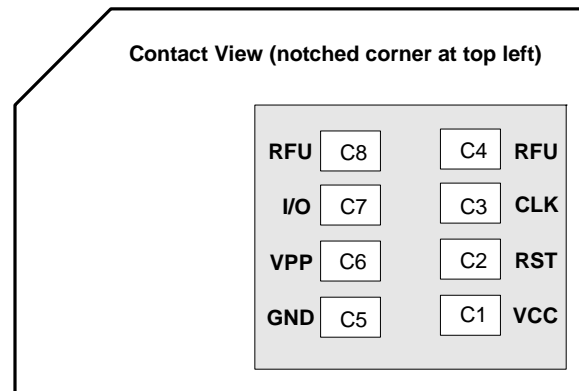


Figure 5-3: USIM card contacts (contact view)

## USIM operation

*Note: For interface design requirements, refer to: (2G) 3GPP TS 51.010-1, section 27.17, or (3G) ETSI TS 102 230 V5.5.0, section 5.2.*

When designing the remote USIM interface, you *must* make sure that the USIM signal integrity is not compromised.

Some design recommendations include:

- Total impedance of the VCC and GND connections to the USIM, measured at the module connector, should be less than 1  $\Omega$  to minimize voltage drop (includes any trace impedance and lumped element components—inductors, filters, etc.).

*Note: The MC8xxx is designed for use with either a 1.8 V or 3 V USIM.*

- Position the USIM connector no more than 10 cm from the module. If a longer distance is required because of the design of the host device, a shielded wire assembly is recommended—connect one end as close as possible to the USIM connector and the other end as close as possible to the module connector. The shielded assembly may help shield the USIM interface from system noise.
- Reduce crosstalk on the XIM\_data line to reduce the risk of failures during GCF approval testing.
- Avoid routing the XIM\_CLK and XIM\_DATA lines in parallel over distances greater than 2 cm—cross-coupling of these lines can cause failures.
- Keep USIM signals as short as possible, and keep very low capacitance traces on the XIM\_DATA and XIM\_CLK signals to minimize signal rise time—signal rise time must be <1  $\mu$ s. High capacitance increases signal rise time, potentially causing your device to fail certification tests.
- Add external pull-up resistors (15 k $\Omega$ –30 k $\Omega$ ), if required, between the SIM\_IO and SIM\_VCC lines to optimize the signal rise time.
- 3GPP has stringent requirements for I/O rise time (<1  $\mu$ s), signal level limits, and noise immunity—consider this carefully when developing your PCB layout.
- VCC line should be decoupled close to the USIM socket.

- USIM is specified to run up to 5 MHz (USIM clock rate). Take note of this speed in the placement and routing of the USIM signals and connectors.
- You must decide if, **and how much**, additional ESD protection and series resistors are suitable for your product. The MC8xxx already includes additional ESD protection. Adding more protection (additional circuits) than is necessary could decrease signal rise time, increase load impedance, and cause USIM certification failure.
- Putting an optional decoupling capacitor at XIM\_VCC near the USIM socket is recommended—the longer the trace length (impedance) from the socket to the module, the greater the capacitance requirement to meet compliance tests.
- Putting an optional series capacitor and resistor termination (to ground) at XIM\_CLK at the USIM socket to reduce EMI and increase signal integrity is recommended if the trace length between the USIM socket and module is long—47 pF and 50  $\Omega$  resistor are recommended.
- Protect the USIM socket to make sure that the USIM cannot be removed while the module/host device is powered up. For example, you could place the socket under the battery (for portable devices); consider similar options for other device types.
- Test your first prototype host hardware with a Comprion IT<sup>3</sup> USIM test device at a suitable testing facility.

## Extended AT commands

Several proprietary AT commands are available for AirPrime embedded modules to use in hardware integration design and testing (these commands are *NOT* intended for use by end users). For a list of all available commands and descriptions of their functionality, refer to *CDMA Extended AT Command Reference (Document 2130621)* for the MC57xx, or *AirPrime MC8xxx Embedded Modules Extended AT Command Reference (Document 2130616)* and *AirCard/AirPrime UMTS devices Supported AT Command Reference (Document 2130617)* for the MC8xxx.

Some useful commands for use in hardware integration are listed in [Table 5-3](#) (MC57xx) and [Table 5-4](#) on page 63 (MC8xxx).

**Table 5-3: MC57xx Extended AT commands**

Command	Description
<b>Internal commands</b>	
<b>!OEM</b>	Unlock OEM protected commands
<b>Modem state commands</b>	
<b>!DIAG</b>	Set diagnostic mode
<b>!BOOTHOLD</b>	Resets modem and wait in boot loader
<b>RF AT commands</b>	
<b>!CHAN</b>	Set RF band and channel

Table 5-3: MC57xx Extended AT commands (Continued)

Command	Description
<b>!RX</b>	Turn on/off the first receiver
<b>!RX2</b>	Turn on/off the second receiver
<b>!RXAGC</b>	Read Rx AGC
<b>!RX2AGC</b>	Read second Rx AGC
<b>!TX</b>	Enable Tx chain
<b>!TXAGC</b>	Set Tx AGC
<b>!KEYON</b>	Turn on transmitter
<b>!KEYOFF</b>	Turn off transmitter
<b>!ALLUP</b>	Turn on transmitter in all ups condition
<b>Provisioning commands</b>	
<b>!CARRIERID</b>	Display the carrier ID
<b>CDMA commands</b>	
<b>!STATUS</b>	Display the status of the modem
<b>!SCI</b>	Get slot cycle index
<b>Power control commands</b>	
<b>!PCSTATE</b>	Power control state
<b>!PCINFO</b>	Read the power control information
<b>!PCTEMP</b>	Read the power control temperature
<b>!PCVOLT</b>	Read the power control voltage

Table 5-4: MC8xxx Extended AT commands

Command	Password-protected	Description
<b>Password commands</b>		
<b>!ENTERCND</b>	<b>X</b>	Enable access to password-protected commands
<b>!SETCND</b>	<b>X</b>	Set AT command password
<b>Modem reset and status commands</b>		
<b>!GRESET</b>	<b>X</b>	Reset the modem
<b>!GSTATUS</b>	<b>X</b>	Return the operation status of the modem (mode, band, channel, and so on)

Table 5-4: MC8xxx Extended AT commands (Continued)

Command	Password-protected	Description
<b>Diagnostic commands</b>		
<b>!BAND</b>	X	Select a set of frequency bands or reports current selection
<b>!GBAND</b>	X	Read/set the current operating band
<b>Test commands</b>		
<b>!DAFTMACT</b>	✓	Put the modem into FTM (Factory Test Mode)
<b>!DAFTMDEACT</b>	✓	Put the modem into online mode
<b>!DAGGRSSI</b>	✓	Return the RSSI (Received Signal Strength Indicator) in dBm (GSM mode)
<b>!DAGGAVGRSSI</b>	✓	Return an averaged RSSI (Received Signal Strength Indicator) in dBm (GSM mode)
<b>!DAGGRSSIRAW</b>	✓	Return the raw RSSI (GSM mode)
<b>!DAGINFO</b>	✓	Return GSM mode RF information
<b>!DAGSLOCK</b>	✓	Return the RF synthesizer lock state
<b>!DAGSRXBURST</b>	✓	Set the GSM receiver to burst mode
<b>!DAGSRXCONT</b>	✓	Set the GSM receiver continually on
<b>!DAGSTXBURST</b>	✓	Set the GSM transmitter to burst mode
<b>!DAGSTXFRAME</b>	✓	Set the GSM Tx frame structure
<b>!DAOFFLINE</b>	✓	Place modem offline
<b>!DASBAND</b>	✓	Set the frequency band (UMTS/GSM)
<b>!DASCHAN</b>	✓	Set the modem channel (frequency) (UMTS/GSM)
<b>!DASLNAGAIN</b>	✓	Set the LNA (Low Noise Amplifier) gain state
<b>!DASPDM</b>	✓	Set the PDM (Pulse Duration Modulation) value
<b>!DASTXOFF</b>	✓	Turn off the Tx PA (Power Amplifier)
<b>!DASTXON</b>	✓	Turn on the Tx PA (Power Amplifier)
<b>!DAWGAVGAGC</b>	✓	Return averaged RX AGC value (WCDMA)
<b>!DAWGRXAGC</b>	✓	Return the Rx AGC (Automatic Gain Control) value (UMTS)
<b>!DAWINFO</b>	✓	Return WCDMA mode RF information
<b>!DAWSCONFIGRX</b>	✓	Set the UMTS receiver to factory calibration settings
<b>!DAWSPARANGE</b>	✓	Set the PA range state machine (UMTS)

**Table 5-4: MC8xxx Extended AT commands (Continued)**

Command	Password-protected	Description
<b>!DAWSCHAINTCM</b>	✓	Place receive chain in test call mode (WCDMA)
<b>!DAWSSCHAIN</b>	✓	Enable secondary receive chain (WCDMA)
<b>!DAWSTXCW</b>	✓	Set the waveform used by the transmitter (UMTS)
<b>!DAWSTXPWR</b>	✓	Set desired Tx power level (WCDMA)
<b>!OSDSM</b>	✓	Display memory usage for DSM (Distributed Shared Memory) buffer pools



## »» 6: Thermal Considerations

# 6

Embedded modules can generate significant amounts of heat that must be dissipated in the host device for safety and performance reasons.

The amount of thermal dissipation required depends on the following factors:

- Supply voltage—Maximum power dissipation for these modules can be up to 3.1 W (or 3.5 W for the MC8355/MC8700/MC8704/MC8705/MC8801 in HSPA+ mode) at voltage supply limits.
- Usage—Typical power dissipation values depend on the location within the host, amount of data transferred, etc.

Specific areas requiring heat dissipation include the following four shield cases indicated in [Figure 6-1](#) on page 68:

- Transmitter—Top shield (next to RF connectors). This is likely to be the hottest area.
- Baseband 1—Bottom shield, below the transmitter
- Receiver—Top shield, other side of module from the transmitter
- Baseband 2—Bottom shield, below the receiver

You can enhance heat dissipation by:

- Maximizing airflow over/around the module
- Locating the module away from other hot components

---

*Note: Adequate dissipation of heat is necessary to ensure that the module functions properly, and to comply with the thermal requirements in PCI Express Mini Card Electromechanical Specification Revision 1.1.*

---

### Module testing

When testing your integration design:

- Test to your worst case operating environment conditions (temperature and voltage)
- Test using worst case operation (transmitter on 100% duty cycle, maximum power)
- Monitor temperature at all shield locations. Attach thermocouples to each shield in the areas indicated in [Figure 6-1](#) on page 68 (Transmitter, Baseband 1, Receiver, Baseband 2).

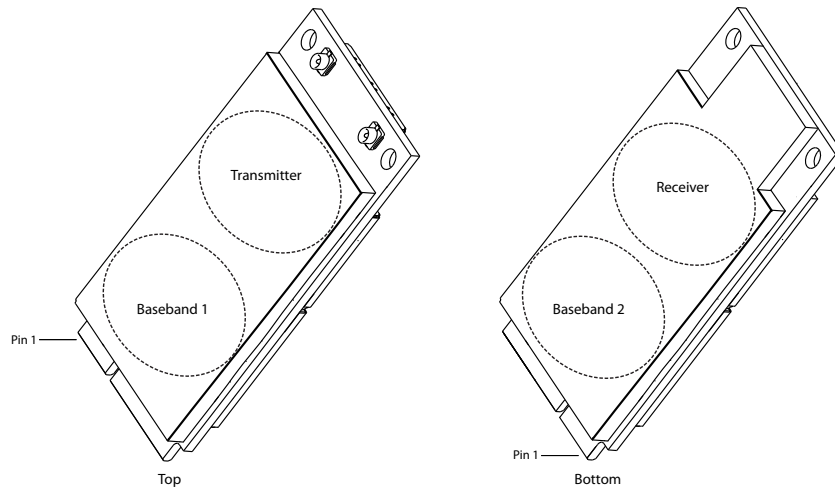


Figure 6-1: Shield locations

---

*Note: Make sure that your system design provides sufficient cooling for the module. The RF shield temperature should be kept below 90°C when integrated to prevent damage to the module's components.*

---

## 7: Design Checklist

This chapter provides a summary of the design considerations mentioned throughout this guide. This includes items relating to the power interface, RF integration, thermal considerations, cabling issues, and so on.

*Note: This is NOT an exhaustive list of design considerations. It is expected that you will employ good design practices and engineering principles in your integration.*

**Table 7-1: Hardware integration design considerations**

Suggestion	Section where discussed
<b>Component placement</b>	
Protect the USIM socket so the USIM cannot be removed while the host is powered up.	<a href="#">USIM operation</a> on page 61
If an ESD suppressor is not used, allow space on the USIM connector for series resistors in layout. (Up to 100 $\Omega$ may be used depending on ESD testing requirements).	<a href="#">USIM operation</a> on page 61
Minimize RF cable losses as these affect performance values listed in product specification documents.	<a href="#">RF connection</a> on page 41
<b>Antennas</b>	
Match the module/antenna coax connections to 50 $\Omega$ —mismatched antenna impedance and cable loss negatively affect RF performance.	<a href="#">RF connection</a> on page 41
If installing both the MC57xx and MC8xxx in the same device, consider using separate antennas for maximum performance.	<a href="#">Antenna and cabling</a> on page 42
<b>Power</b>	
Limit host power rail dips caused by module inrush current by adding sufficient capacitance to the host power rail.	<a href="#">Inrush currents</a> on page 24
Make sure the power supply can handle the maximum current specified for the module type.	<a href="#">Current consumption overview</a> on page 27
Limit the total impedance of VCC and GND connections to the USIM at the connector to less than 1 $\Omega$ (including any trace impedance and lumped element components—inductors, filters, etc.). All other lines must have a trace impedance less than 2 $\Omega$ .	<a href="#">USIM operation</a> on page 61
Decouple the VCC line close to the USIM socket. The longer the trace length (impedance) from socket to module, the greater the capacitance requirement to meet compliance tests.	<a href="#">USIM operation</a> on page 61

**Table 7-1: Hardware integration design considerations (Continued)**

<b>Suggestion</b>	<b>Section where discussed</b>
<b>EMI/ESD</b>	
Investigate sources of localized interference early in the design cycle.	<a href="#">Methods to mitigate decreased Rx performance</a> on page 45
Provide ESD protection for the USIM connector at the exposed contact point (in particular, the CLK, VCC, IO, and RESET lines).	<a href="#">USIM operation</a> on page 61
Keep very low capacitance traces on the XIM_DATA and XIM_CLK signals.	
To minimize noise leakage, establish a very good ground connection between the module and host.	<a href="#">Ground connection</a> on page 42
Route cables away from noise sources (for example, power supplies, LCD assemblies, etc.).	<a href="#">Methods to mitigate decreased Rx performance</a> on page 45
Shield high RF-emitting components of the host device (for example, main processor, parallel bus, etc.).	<a href="#">Methods to mitigate decreased Rx performance</a> on page 45
Use discrete filtering on low frequency lines to filter out unwanted high-order harmonic energy.	<a href="#">Methods to mitigate decreased Rx performance</a> on page 45
Use multi-layer PCBs to form shielding layers around high-speed clock traces.	<a href="#">Methods to mitigate decreased Rx performance</a> on page 45
<b>Thermal</b>	
Test to worst case operating conditions—temperature, voltage, and operation mode (transmitter on 100% duty cycle, maximum power).	<a href="#">Thermal Considerations</a> on page 67
Use appropriate techniques to reduce module temperatures (for example, airflow, heat sinks, heat-relief tape, module placement, etc.).	<a href="#">Thermal Considerations</a> on page 67
<b>Host/Modem communication</b>	
Make sure the host USB driver supports remote wakeup, resume, and suspend operations, and serial port emulation.	<a href="#">USB handshaking</a> on page 58
When no valid data is being sent, do not send SOF tokens from the host (causes unnecessary power consumption).	<a href="#">USB handshaking</a> on page 58

---

*Note: All AirPrime embedded modules are factory-tested to ensure they conform to published product specifications.*

---

Developers of OEM devices integrating Sierra Wireless AirPrime embedded modules should include a series of test phases in their manufacturing process to make sure that *their* devices work properly with the embedded modules.

Suggested phases include:

- [Acceptance testing](#)—Testing of modules when they are received from Sierra Wireless
- [Certification testing](#)—Testing of completed devices to obtain required certifications before beginning mass production
- [Production testing](#)—Testing of completed devices with the modules embedded
- [Quality assurance testing](#)—Post-production

## AT command entry timing requirement

Some AT commands require time to process before additional commands are entered. For example, the modem will return “OK” when it receives `ATIDAFTMACT`. However, if `ATIDASBAND` is received too soon after this, the modem will return an error.

When building automated test scripts, ensure that sufficient delays are embedded where necessary to avoid these errors.

## Acceptance testing

---

*Note: Acceptance testing is typically performed for **each** shipment received.*

---

When you receive a shipment from Sierra Wireless, you should make sure it is suitable before beginning production.

From a random sampling of units, test that:

- The units are operational
- The units are loaded with the correct firmware version

## Acceptance test requirements

To perform the suggested tests, you require a test system in which to temporarily install the module, and you must be able to observe the test device's LED indicator.

## Acceptance test procedure

The following is a suggested acceptance testing procedure using Sierra Wireless' Watcher software:

---

*Note: You can perform these tests using appropriate AT commands.*

---

### Test 1: Check power-up and initialization

1. After installing the module, start the test system.
2. Launch Watcher.
3. Check the LED—If the LED is off, there is a problem with the module or with the connection to the LED.

### Test 2: Check version numbers

1. From Watcher, select **Help > About**.
2. Verify that the firmware version in the **About** window is correct.
3. Close the **About** window.

If the module fails either of these tests, or is not recognized by Watcher:

1. Replace the module with one that is known to work correctly and repeat the tests.
2. If the tests are successful, reinstall the original module and repeat the tests.

If the module still does not work correctly, contact your account manager.

## Certification testing

---

*Note: Typically, you need to pass certification testing of your device with the integrated module one time only.*

---

When you produce a host device with a Sierra Wireless AirPrime embedded module, you must obtain certifications for the final product from appropriate regulatory bodies in the jurisdictions where it will be distributed.

---

*Note: The module itself (MC57xx, MC8xxx) has been certified already—only the integrated device needs certification.*

---

The following are *some* of the regulatory bodies from which you may require certification—it is your responsibility to make sure that you obtain all necessary certifications for your product from these or other groups:

- FCC (Federal Communications Commission—[www.fcc.gov](http://www.fcc.gov))
- Industry Canada ([www.ic.gc.ca](http://www.ic.gc.ca))
- CSA (Canadian Standards Association—[www.csa.ca](http://www.csa.ca))
- Factory Mutual (FM Global—[www.allendale.com](http://www.allendale.com))

- Underwriters Laboratories Inc. ([www.ul.com](http://www.ul.com))
- (MC57xx only) CDG (CDMA Development Group—[www.cdg.org](http://www.cdg.org))
- (MC8xxx only) GCF (Global Certification Forum—[www.globalcertificationforum.org](http://www.globalcertificationforum.org)) outside of North America
- (MC8xxx only) PTCRB (PCS Type Certification Review Board—[www.ptcrb.com](http://www.ptcrb.com)) in North America

## Production testing

---

*Note: Production testing typically continues for the life of the product.*

---

Each assembled device should be tested to make sure the module is installed correctly and is functioning within normal operating parameters.

---

*Note: All Sierra Wireless AirPrime embedded modules are fully factory-tested to ensure they conform to published product specifications.*

---

In general, production testing ensures that the module is installed correctly (I/O signals are passed between the host and module), and the antenna is connected and performing to specifications (RF tests).

Typical items to test include host connectivity, the RF assembly (Tx and/or Rx, as appropriate), and the audio assembly (for voice-enabled modules).

---

*Note: The amount and types of tests to perform are **your** decision—the tests listed in this section are guidelines only. Make sure that the tests you perform exercise functionality to the degree that **your** situation requires—this may include, for example, testing network availability, any host device configuration issues, baseband testing (GPIO/Audio, host/module connectors) and appropriate RF testing (Tx and/or Rx).*

---

Use an appropriate test station for your testing environment (see [Acceptance test requirements](#) on page 72 for suggestions) and use AT commands to control the integrated module.

---

*Note: Your test location must be protected from ESD to avoid interference with the module and antenna(s) (assuming that your test computer is in a disassembled state).*

*Also, consider using an RF shielding box as shown in the suggested test equipment—local government regulations may prohibit unauthorized transmissions.*

---

## Suggested manual functional test procedure

This section presents a suggested procedure for performing a basic manual functional test on a laboratory bench using an AirPrime embedded module and a Mini Card Dev Kit. When you have become familiar with the testing method, use it to develop your own automated production testing procedures.

## Suggested production tests

Consider the following tests when you design your production test procedures for devices with the MC57xx and/or MC8xxx installed.

- Visual check of the module's connectors, RF assemblies, and audio assemblies (if applicable)
- Module is operational
- USB connection is functional
- LED is functional
- W\_Disable# (module power down)
- Firmware revision check
- Rx tests on main and auxiliary paths
- Tx test
- Audio (microphone and speaker) tests (for voice-enabled modules)

## Suggested production test plan procedure

---

*Note: The following is a suggested outline for a relatively comprehensive test plan—you must decide which tests are appropriate for your product.*

*This is **not** an exhaustive list of tests—you may wish to add additional tests that more fully exercise the capabilities of your product.*

*You may choose to create and run a test program that automates portions of the test procedure.*

---

Using an appropriate Dev Kit-based test station (a suggested setup is described in [Suggested testing equipment](#) on page 88), and referring to the appropriate AT command references:

1. Visually inspect the module's connectors and RF assemblies for obvious defects before installing it in the test station.
2. Ensure that the module is turned off before beginning your tests—Set W\_Disable# low.
3. If using Linux, determine if any USB devices are currently connected to the computer:
  - a. Open a shell window and enter the command `ls /dev/tty/USB*`.
  - b. Record the ttyUSBn values that are returned; these are the currently connected USB devices. If the command returns “no such file or directory”, there are no devices currently connected.
4. Test W\_Disable#—Turn on the module by letting W\_Disable# float (high impedance). Depending on your device, this may just require powering up the device. Refer to the *PCI Express Mini Card Dev Kit Quick Start Guide (Document 2130705)* for more details.

---

*Note: To power-off the module, drive W\_Disable# low for the required minimum period. See [State change: Power off/on](#) on page 23 for details.*

---

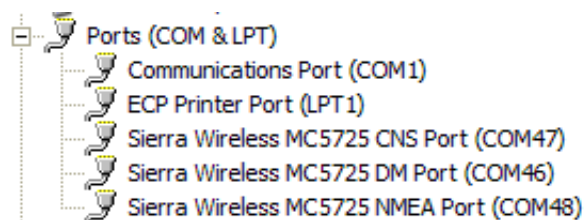
## 5. Test USB functionality—Check for USB enumeration.

- (Windows systems) The Device Manager shows Sierra Wireless items under the Ports - (COM & LPT) entry. The devices shown depend on the module type. For example:

- MC8xxx



- MC57xx



- (Linux systems) Enter the command `ls /dev/tty/USB*` and then record and compare the results with those from [Step 3](#). If there are any new `ttyUSBn` devices, then the modem has enumerated successfully. (There should be three or seven *new* devices, depending on the module type.) For example:
  - MC8775/MC8775V/MC8780/MC8781/MC8700 (with no other USB devices connected):

```

C:\ Telnet 00.0.00.00
xxxx@C-Linuxdev2:~$ ls /dev/ttyUSB*
/dev/ttyUSB0 /dev/ttyUSB1 /dev/ttyUSB2
xxxx@C-Linuxdev2:~$

```

(Note: The AT port is the third new device—`/dev/ttyUSB2`.)

- Other devices (with one other USB device already connected and assigned to `ttyUSB1`):

```

C:\ Telnet 00.0.00.00
xxxx@C-Linuxdev2:~$ ls /dev/ttyUSB*
/dev/ttyUSB0 /dev/ttyUSB2 /dev/ttyUSB4 /dev/ttyUSB6
/dev/ttyUSB1 /dev/ttyUSB3 /dev/ttyUSB5 /dev/ttyUSB7
xxxx@C-Linuxdev2:~$

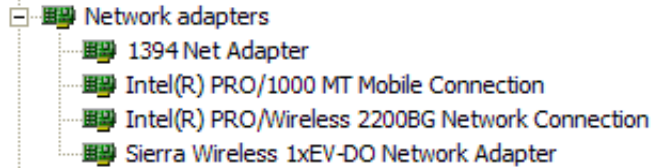
```

(Note: The AT port is the fourth *new* device—`/dev/ttyUSB4`.)

6. Some modules cause a Sierra Wireless Network Adapter to appear in Device Manager, as shown below for MC57xx. Disable the adapter to allow entry of AT commands when performing diagnostic tests:

- a. Right-click the Sierra Wireless Network Adapter to display the context menu.
- b. Click **Disable**.

MC57xx



7. Make sure your modem is connected and running, and then establish contact with the module:

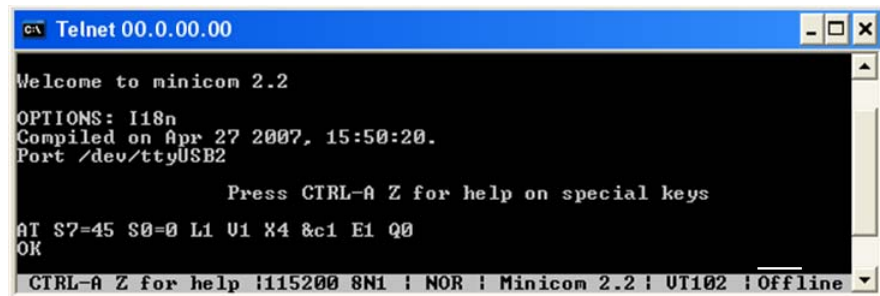
**Windows systems:** Use a terminal emulation/communications program such as Microsoft HyperTerminal® to connect over the COM port reserved for AT commands (see listings in [Step 5](#)):

- a. Start HyperTerminal.
- b. Select **File > Connection Description**. The Connection Description dialog box appears.
- c. Type Sierra in the Name box and click **OK**. The Connect To dialog box appears.
- d. Click **OK** without changing any of the displayed information. The Connect dialog box appears.
- e. Click **Cancel**.
- f. Type ATZ in the HyperTerminal window. If the connection is established, the message OK appears.

**Linux systems:** Use a terminal emulation/communications program such as minicom to connect over the device handle for AT commands (see listings in [Step 5](#)):

- a. Start minicom:
  - First use of the modem: From the command line, type minicom -s. (The '-s' switch shows the configuration menu.)
  - Subsequent uses: From the command line, type minicom. (The '-s' switch is assumed.)

The minicom configuration details appear and the message OK appears when the connection is established.




---

*Note: If necessary, use **ATE1** to enable echo.*

---



---

*Note: If the command "minicom" is not found, then use a different program, or download minicom and repeat this step. See [Downloading and configuring minicom for Linux systems](#) on page 78 for details.*

---

8. Display the firmware version:
  - MC57xx: **AT+GMR**
  - MC8xxx: **AT!GVER**
 Example response:
  - p2005000,0 [Aug 09, 2006 14:28:24],, VID: PID:
 Characters 5–6 are the firmware version (50 in this example).
9. Test the LED—Set the LED in blinking mode using this command, then visually verify that the LED turns off and on:
  - MC57xx: **AT!LED=0,1**
  - MC8xxx: **AT!DLED** or **AT!LEDCTRL**
10. Unlock the extended AT command set:
  - MC57xx: **AT!OEM=176**
  - MC8xxx: **AT!ENTERCND**
11. Put the module in diagnostic/factory test mode:
  - MC57xx: **AT!DIAG**
  - MC8xxx: **AT!DAFTMACT**
12. (MC8xxx only) Communicate with the USIM using **+CPIN** or **+CIMI**.

---

*Note: When performing RF tests, use a test platform similar to those shown in [Figure 8-2](#) on page 89 and [Figure 8-3](#) on page 90.*

---

*Note: The GPS receiver does not need to be tested for UMTS (MC8xxx) or CDMA (MC57xx) modules supporting diversity because RF connectivity is validated by testing the diversity receiver in [Step 14](#).*

---

*Note: To power-off the module, drive `W_Disable#` low for the required minimum period. See [State change: Power off/on](#) on page 23 for details.*

---

13. Test RF transmission, if desired:
  - MC57xx—See [Testing RF transmission path—MC57xx](#) on page 78.
  - MC8xxx—See [Testing RF transmission path—MC8xxx](#) on page 79.
14. Test RF reception, if desired:
  - MC57xx—See [Testing RF Receive path—MC57xx](#) on page 81.
  - MC8xxx— See [Testing RF Receive path—MC8xxx](#) on page 83.
15. (MC8775V only) Test the GPS receiver, if desired. See [Testing GPS Receiver—MC8775V](#) on page 85.
16. Test Audio loop-back. See [Test Audio Loop-back—MC5727V/MC5728V/MC8775V/MC8790V/MC8791V/MC8792V/MC8795V](#) on page 86.
17. Finish testing
  - a. If the network adapter was disabled in [Step 6](#), re-enable it (same instructions, except click **Enable** instead of **Disable**).
  - b. Set the `W_Disable#` signal low and confirm that the module powers down:
    - Windows systems—The Sierra Wireless items under the Ports (COM & LPT) entry in Device Manager disappear as the module powers off.
    - Linux systems—Enter the command `ls /dev/tty/USB*`. The devices enumerated in [Step 5](#) will not appear after the module powers off.

## Downloading and configuring minicom for Linux systems

*Note: This procedure is for Ubuntu systems. If you are using a different Linux distribution, use the appropriate commands for your system to download minicom.*

To download and configure minicom in a Ubuntu system:

*Note: To install minicom, you must have root access, or be included in the sudoers list.*

1. Download and install minicom—enter the following command:  
`sudo apt-get install minicom`
2. When prompted, enter your user password to begin the download and installation. When minicom is installed, the shell prompt appears.
3. Configure minicom to communicate with your modem:
  - a. Start minicom with the following command:  
`minicom -s`
4. Use the down-arrow key to select the **Serial port setup** option.
5. Refer to [Step 5](#) on page 75 to identify the device file handle (/dev/ttyUSBn) used for AT commands.
6. Indicate the file handle to use for AT commands—Enter A and then replace the serial device string with the AT file handle (for example, /dev/ttyUSB4 for an MC8792V as shown in the example in [Step 5](#) on page 75).
7. Press **Enter** twice.
8. Use the down-arrow key to select **Save setup as dfl.**
9. Select **Exit.**

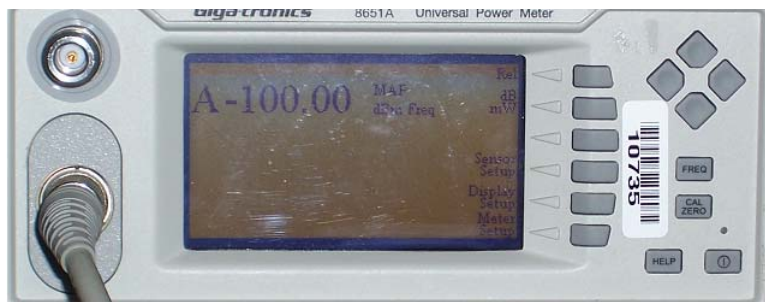
## Testing RF transmission path—MC57xx

*Note: This procedure segment is performed in [Step 13](#) of the [Suggested production test plan procedure](#) on page 74.*

To test the DUT's transmitter path:

*Note: This procedure describes steps using the "Power Meter: Gigatronics 8651A" (with Option 12 and Power Sensor 80701A).*

1. Set up the power meter:



- a. Make sure the meter has been given sufficient time to warm up, if necessary, to enable it to take accurate measurements.

---

*Note: These AT commands generate a modulated test signal.*

---

- b. Zero-calibrate the meter.
  - c. Enable MAP mode.
2. Prepare the DUT using the following AT commands:
    - a. **ATIOEM=176** (Unlock the extended AT command set)
    - b. **ATIDIAG** (Set modem in diagnostic mode)
    - c. **ATICHAN=600,1** (PCS band, channel 600)  
or  
**ATICHAN=384,0** (Cellular band, channel 384)

The power meter should read -100 dBm, indicating no signal.

- d. **ATITX=1** (Turn on transmitter)
  - e. **ATIALLUP=1** (Enable “all ups” condition)  
The power meter should read from 0–24 dBm, depending on your setup.
  - f. **ATITX=0** (Turn off transmitter)
3. Test limits—Run ten or more good DUTs through this test procedure to obtain a nominal output power value.
    - Apply a tolerance of  $\pm 5$  to 6 dB to each measurement (assuming a good setup design).
    - Monitor these limits during mass-production ramp-up to determine if further adjustments are needed.

---

*Note: The MC57xx has a nominal output power of +24 dBm  $\pm 1$  dB. However, the value measured by the power meter depends on the test setup (RF cable loss, couplers, splitters) and the DUT design.*

---



---

*Note: When doing the same test over the air in an RF chamber, values are likely to be significantly lower.*

---

## Testing RF transmission path—MC8xxx

---

*Note: This procedure segment is performed in [Step 13](#) of the [Suggested production test plan procedure](#) on page 74.*

---

**Table 8-1** contains parameters used in the suggested test procedure that follows.

**Table 8-1: Test settings—MC8xxx transmission path**

Mode	Test category	Bands				
		850	900	1800	1900	2100
WCDMA	Band	22	29		15	9
	Channel	4182	2812		9400	9750

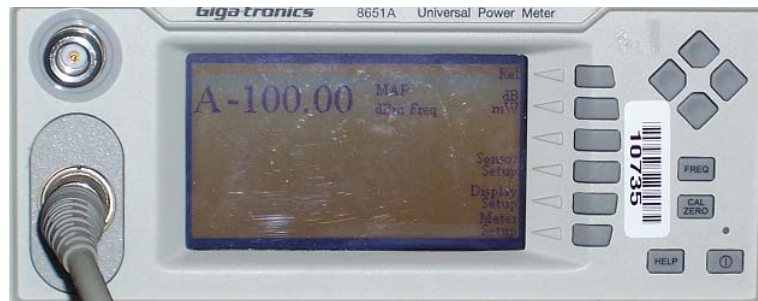
**Table 8-1: Test settings—MC8xxx transmission path (Continued)**

Mode	Test category	Bands				
		850	900	1800	1900	2100
GSM	Band	18	10	11	12	
	Channel	190	65	697	661	

To test the DUT's transmitter path:

*Note: This procedure describes steps using the "Power Meter: Gigatronics 8651A" (with Option 12 and Power Sensor 80701A).*

**1. Set up the power meter:**



- a. Make sure the meter has been given sufficient time to warm up, if necessary, to enable it to take accurate measurements.
  - b. Zero-calibrate the meter.
  - c. Enable MAP mode.
- 2. Prepare the DUT using the following AT commands:**
- a. `ATIUNLOCK=<lockCode>` (Unlock extended AT command set.)  
or  
`ATIINTERCND`
  - b. `ATIDAFTMACT` (Enter test mode.)
  - c. `ATIDASBAND=<bandValue>` (Set frequency band.)  
· See [Table 8-1](#) for appropriate <bandValue> values
  - d. `ATIDASCHAN=<channel>` (Set modem channel)  
· See [Table 8-1](#) for appropriate <channel> values
  - e. (GSM mode only)  
`ATIDAGSTXFRAME=0, 1, 3000, 0` (Set Tx frame structure.)
  - f. `ATIDASTXON` (Turns on the transmit path.)
  - g. (WCDMA mode only)  
`ATIDAWSTXCW=0` (Use a modulated carrier.)
  - h. (WCDMA mode only)  
`ATIDASPDM=2, 455` (Set the power level, tunable from 0 to 511.)
  - i. (WCDMA mode only)  
`ATIDAWSPARANGE=3` (Set to high PA gain state.)
  - j. Take the measurement.
  - k. `ATIDASTXOFF` (Turn off the transmitter.)

3. Test limits—Run ten or more good DUTs through this test procedure to obtain a nominal output power value.
  - Apply a tolerance of  $\pm 5$  to 6 dB to each measurement (assuming a good setup design).
  - Monitor these limits during mass-production ramp-up to determine if further adjustments are needed.
  - For GSM mode, the transmit signal is bursted, so the transmit power will appear averaged on the power meter reading.

---

*Note: The MC8xxx has a nominal output power of +23 dBm  $\pm 1$  dB in WCDMA mode. However, the value measured by the power meter is significantly influenced (beyond the stated  $\pm 1$  dB output power tolerance) by the test setup (host RF cabling loss, antenna efficiency and pattern, test antenna efficiency and pattern, and choice of shield box).*

---



---

*Note: When doing the same test over the air in an RF chamber, values are likely to be significantly lower.*

---

## Testing RF Receive path—MC57xx

---

*Note: This procedure segment is performed in [Step 14](#) of the [Suggested production test plan procedure](#) on page 74.*

---

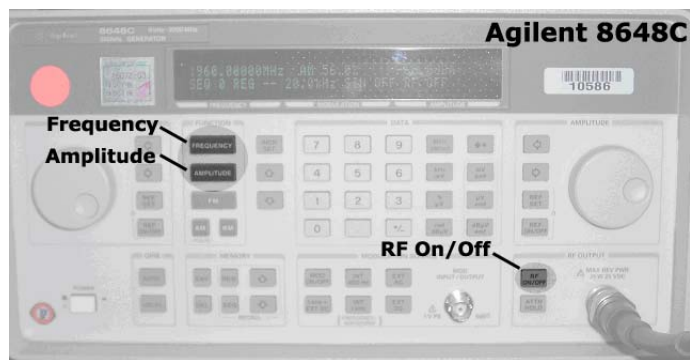
To test the DUT's receive path:

1. Set up the signal generator:

---

*Note: This procedure describes steps using the Agilent 8648C signal generator—the Rohde & Schwarz SML03 is shown for reference only.*

---



---

*Note: This example setup uses a 200 kHz offset from band center for testing using a continuous wave—you can use any appropriate baseband frequency offset (for example, 100 kHz, 300 kHz, etc.).*

*If using a modulated signal, set the frequency to band center with no offset.*

---

- a. Press the **Frequency** button to set the frequency to 1960.200 MHz for PCS band, Channel 600, or 881.720 MHz for Cellular band, Channel 384
  - b. Press the **Amplitude** button to set the amplitude to -55.0 dBm.
  - c. Press the **RF ON/OFF** button to enable or disable the RF port of the signal generator.
2. Read back the power level from the main receiver:
    - a. **ATIOEM=176** (Unlock the extended AT command set.)
    - b. **ATIDIAG** (Set the modem in Diagnostic mode.)
    - c. **ATICHAN=600,1** (PCS band, channel 600)  
or  
**ATICHAN=384,0** (Cellular band, channel 384)
    - d. **ATIRX=1** (Turn on the main receiver.)
    - e. **ATIRXAGC?** (Read back the power level, in dBm, from the main receiver.)  
Response examples:
      - RXAGC = 0xFFFFFFFF33 = -77 dBm (Signal generator's RF port is OFF)
      - RXAGC = 0x0021 = -60 dBm typical (Signal generator's RF port is ON)

---

*Note: The dBm value displayed is calculated to reflect the power at the input connector.*

---

- f. **ATIRX2=1** (Turn on diversity receiver.)
  - g. **ATIRX2AGC?** (Read back the power level, in dBm, from the diversity receiver.)  
Response examples:
    - RX2AGC = 0xFFFFFFFF76 = -84 dBm (Signal generator's RF port is OFF)
    - RX2AGC = 0xFFFFFFFFC6 = -69 dBm typical (Signal generator's RF port is ON)
  - h. **ATIRX=0** (Turn off main receiver.)
  - i. **ATIRX2=0** (Turn off diversity receiver.)
3. Test limits—Run ten or more good DUTs through this test procedure to obtain a nominal received power value.
    - Apply a tolerance of  $\pm 5$  to 6 dB to each measurement (assuming a good setup design).
    - Make sure the measurement is made at a high enough level that it is not influenced by DUT-generated and ambient noise.
    - The Signal Generator power level should be at least -50 dBm.
    - Monitor these limits during mass-production ramp-up to determine if further adjustments are needed.

---

*Note: The value measured by the DUT depends on the test setup and DUT design. Host RF cabling loss, antenna efficiency and pattern, test antenna efficiency and pattern, and choice of shield box all significantly influence the measurement.*

---

*Note: When doing the same test over the air in an RF chamber, values are likely to be significantly lower.*

---

## Testing RF Receive path—MC8xxx

Note: This procedure segment is performed in [Step 14](#) of the [Suggested production test plan procedure](#) on page 74.

[Table 8-2](#) contains parameters used in the suggested test procedure that follows.

**Table 8-2: Test settings—MC8xxx Receive path**

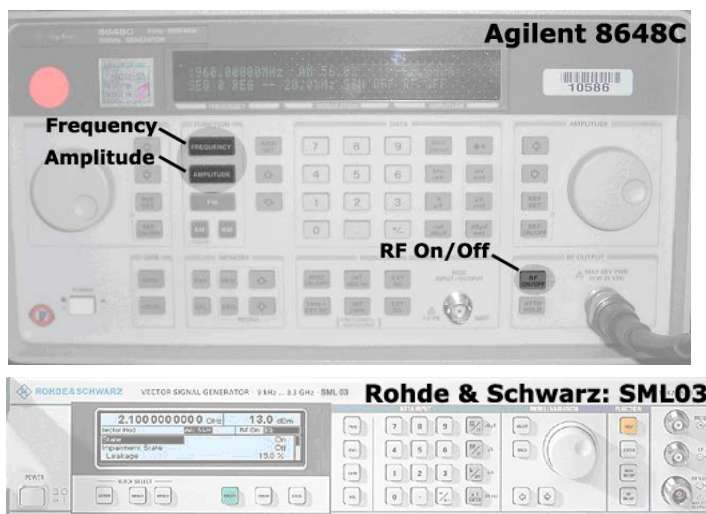
Mode	Test category	Bands				
		850	900	1800	1900	2100
WCDMA	Frequency <sup>a</sup> (MHz)	882.60	948.60		1961.2	2141.2
	Band	22	29		15	9
	Channel	4182	2812		9400	9750
GSM	Frequency <sup>b</sup> (MHz)	881.667	948.067	1842.267	1960.067	
	Band	18	10	11	12	
	Channel	190	65	697	661	

- a. All values offset from actual center channel by +1.2 MHz  
 b. All values offset from actual center channel by +67 kHz

To test the DUT's receive path:

1. Set up the signal generator:

Note: This procedure describes steps using the Agilent 8648C signal generator—the Rohde & Schwarz SML03 is shown for reference only.



- a. Set the amplitude to:
  - -80 dBm (WCDMA mode)
  - -60 dBm (GSM mode)
- b. Set the frequency for the band being tested. See [Table 8-2](#) for frequency values.

2. Set up the DUT:
  - a. **ATIUNLOCK="<customerCode>"** (Unlock extended AT command set.)  
or  
**ATIENTERCND** (Unlock extended AT command set.)
  - b. **ATIDAFTMACT** (Put modem into factory test mode.)
  - c. **ATIDASBAND=<band>** (Set frequency band.)  
· See [Table 8-2](#) on page 83 for <band> values
  - d. **ATIDASCHAN=<channel>** (Set modem channel)  
· See [Table 8-2](#) on page 83 for <channel> values
  - e. **ATIDASLNAGAIN=0** (Set the LNA to maximum gain.)
  - f. (WCDMA mode)
    - i. **ATIDAWGAVGAGC=9400,0** (For PCS1900, channel 9400 as an example.)  
(GSM mode)
    - ii. **ATIDAGSRXBURST=0** (Set to receive bursted mode.)
    - iii. **ATIDAGGAVGRSSI=190,0** (For channel 190, for example.)  
The returned value is the RSSI in dBm.
3. Test limits—Run ten or more good DUTs through this test procedure to obtain a nominal received power value.
  - Apply a tolerance of  $\pm 5$  to 6 dB to each measurement (assuming a good setup design).
  - Make sure the measurement is made at a high enough level that it is not influenced by DUT-generated and ambient noise.
  - The Signal Generator power level can be adjusted and new limits found if the radiated test needs greater signal strength.
  - Monitor these limits during mass-production ramp-up to determine if further adjustments are needed.

---

*Note: The value measured from the DUT is significantly influenced by the test setup and DUT design (host RF cabling loss, antenna efficiency and pattern, test antenna efficiency and pattern, and choice of shield box).*

---



---

*Note: Diversity is not available in GSM mode.*

---



---

*Note: Setup of the DUT is the same as in [Step 2](#), except for a change to **ATIDAWGAVGAGC** and the addition of **ATIDAWSSCHAIN**.*

---

4. Test diversity paths:
  - a. Set up the signal generator as in [Step 1](#).
  - b. Set up the DUT:
    - i. **ATIUNLOCK="<customerCode>"** (Unlock extended AT command set.)  
or  
**ATIENTERCND**
    - ii. **ATIDAFTMACT** (Put modem into factory test mode.)
    - iii. **ATIDASBAND=<band>** (Set frequency band.)  
· See [Table 8-2](#) on page 83 for <band> values
    - iv. **ATIDAWSSCHAIN=1** (Enable the secondary chain.)
    - v. **ATIDASCHAN=<channel>** (Set modem channel)  
· See [Table 8-2](#) on page 83 for <channel> values
    - vi. **ATIDASLNAGAIN=0** (Set the LNA to maximum gain.)

vii. AT!DAWGAVGAGC=9400,0,1 (The '1' indicates the diversity path is used.)

- c. Test the limits as in [Step 3](#).

## Testing GPS Receiver—MC8775V

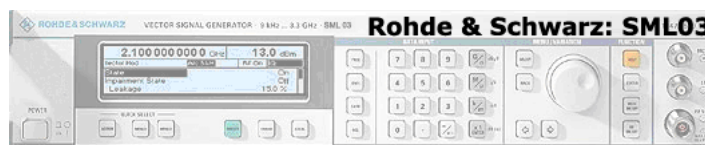
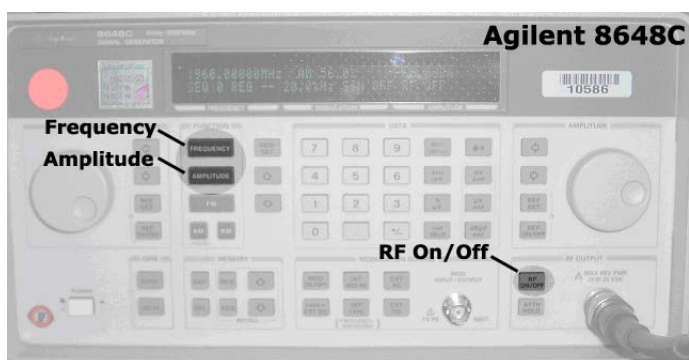
*Note: The GPS receiver does not need to be tested for other UMTS or CDMA modules supporting diversity because RF connectivity is validated by testing the diversity receiver in [Step 14](#) of the [Suggested production test plan procedure](#) on page 74.*

*Note: This procedure segment is performed in [Step 15](#) of the [Suggested production test plan procedure](#) on page 74.*

To test the carrier-to-noise level for the GPS receive path:

*Note: This procedure describes steps using the Agilent 8648C signal generator—the Rohde & Schwarz SML03 is shown for reference only.*

1. Set up the signal generator:



- a. Set the amplitude to -110 dBm.
  - b. Set the frequency to 1575.52 MHz. This is 100 kHz above the center frequency for GPS and is needed to accurately measure the carrier-to-noise (C/N) level.
2. Set up the DUT using the following commands:
- a. AT!UNLOCK=<customerCode> (Unlock extended AT command set.)
  - b. AT!DAFTMACT (Put modem into factory test mode.)
  - c. AT!DAAGCTON (Query power difference between carrier signal and receiver.)
3. Test limits—Run ten or more good DUTs through this test procedure to obtain averaged C/N readings.
- The GPS receiver responds to signal levels from -130 dBm to -80 dBm.

- Measure C/N five times for each DUT to obtain an average reading at -110 dB.
- Make sure the C/N is less than 15 dB when the signal generator is off.
- Allow for  $\pm 5$  dB of C/N variation to identify any problems in the GPS receive path.

## Test Audio Loop-back—MC5727V/MC5728V/ MC8775V/MC8790V/MC8791V/MC8792V/ MC8795V

Note: This procedure segment is performed in [Step 16](#) of the [Suggested production test plan procedure](#) on page 74.

The microphone and speaker audio paths for voice-enable modules can be tested by using an audio quantity that is suited to identify known assembly issues, and applying limits to detect any problems.

To test the audio paths:

1. Set up the audio analyzer to generate a constant tone:

Note: This procedure describes steps using the *Keithley Audio Analyzing DMM, 2016-P*.



- a. Connect a BNC cable to the “Source Output” port at the rear panel.
- b. Press the **Source** button on the front panel, and then set the generator to:
  - Ampl = 0.20 V
  - Impedance = 50  $\Omega$
  - Freq = 1.000 kHz
- c. If using a Sierra Wireless Mini Card Dev Kit, connect the signals as follows:
  - i. Connect the generator output signal to the MIC1\_P (positive) and MIC1\_N (negative) header pins located at CN18 on the Dev Kit.
  - ii. Connect the analyzer input signal to the SPK1\_P (positive) and SPK1\_N (negative) header pins located at CN18 on the Dev Kit (see [Figure 8-1](#) on page 87). For additional details concerning use of the Dev Kit, see the *PCI Express Mini Card Dev Kit Quick Start Guide (Document 2130705)*.
- d. If using a custom host platform:
  - i. Connect the generator output to the microphone input (MIC, positive and negative) in the host.

- ii. Connect the analyzer input to the Speaker output (SPK, positive and negative) in the host.

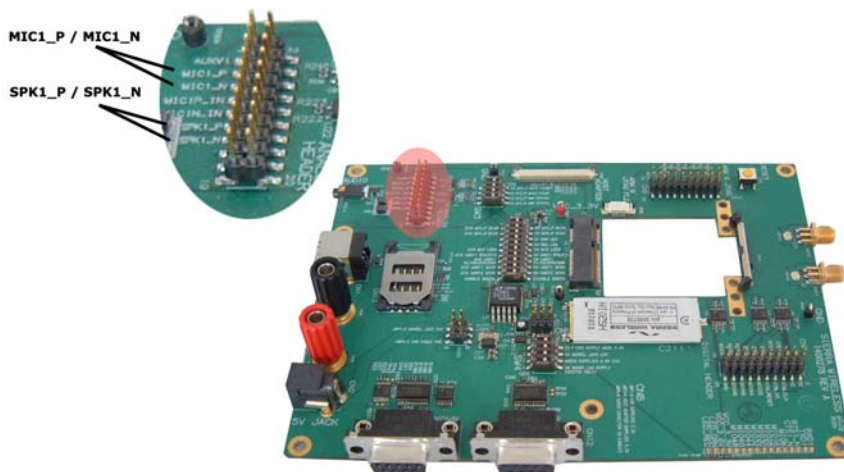


Figure 8-1: Mini Card Dev Kit showing MIC/SPK pins.

2. Set up the DUT using the following commands:  
(MC5727V/MC5728V)
  - a. **ATIOEM=176** (Unlock the extended AT command set.)
  - b. **ATIDIAG** (Set modem in Diagnostic mode.)
  - c. **ATIAVAUDIOLPBK=1** (Enable audio loop-back mode.)
  - d. **ATICODECGAIN=8000,8000,8000** (Set codec gains in the loopback path to +6 dB (Tx), +6 dB (Rx) and -6dB (SideTone).)
    - Total loopback gain =  $\Sigma(\text{codec gains}) - 2 \text{ dB}$
    - For this example, total loopback gain = +4 dB  
(MC8775V/MC8790V/MC8791V/MC8792V/MC8795V)
  - a. **ATIUNLOCK=<lockCode>** (Unlock extended AT command set.)
  - b. **ATIAVSETDEV=0,0,0** (Unmute speaker and microphone for audio profile 0.)
  - c. **ATIAVCODECSTG=0,FFF** (Set sidetone gain for audio profile 0.)
3. Take measurements using the following commands (Note that the module has a gain of 4 dB in audio loopback mode.):
  - a. Press the **ACV** button to measure the AC level.
    - Expected range: 1–2.5 VAC
  - b. Press the **FREQ** button to measure the frequency.
    - Expected value: 1 kHz
  - c. Press the **Shift** and **THD** buttons at the same time to measure the total harmonic distortion.
    - Expected value: < 1%
  - d. Reset the audio parameters:
    - (MC5727V/MC5728V)
      - ATIAVAUDIOLPBK=0** (Disables audio loop-back mode)
    - (MC8775V/MC8790V/MC8791V/MC8792V/MC8795V)
      - ATIAVDEF** (Set configurable audio parameters to default values.)

*Note: Actual measured results will vary, depending on your testing setup.*

## Quality assurance testing

---

*Note: QA is an ongoing process based on random samples from a finished batch of devices.*

---

The quality assurance tests that you perform on your finished products should be designed to verify the performance and quality of your devices.

The following are *some* testing suggestions that can confirm that the antenna is interfaced properly, and that the RF module is calibrated and performs to specifications:

- Module registration on cellular networks
- Power consumption
- Originate and terminate data and voice (if applicable) calls
- Cell hand-off
- Transmitter and receiver tests
- FER (Frame Error Rate) as an indicator of receiver sensitivity/performance
- Channel and average power measurements to verify that the device is transmitting within product specifications
- RF sensitivity tests
- MC57xx-specific:
  - Waveform quality tests (calculating the “rho” parameter) to compare the CDMA signal’s power distribution against the ideal distribution—rho must be >0.97 with max freq error of 0.5 to pass.
  - FER testing—Test receiver sensitivity for conditions of minimum cell power. FER can be measured for the specified receiver sensitivity of -104 dBm. The objective of this test is to determine if the FER measured is within the acceptable limits for the specified receiver sensitivity of the module. Unlike the FER tests performed during production testing, this test determines the receiver performance without the influence of the noise factor (AWGN), but with extremely low cell power. The reported FER and the confidence level must be <1% and >95% respectively for the test to be considered a pass.
- MC8xxx-specific:
  - RF sensitivity testing—BER/BLER for different bands and modes
  - Transmitter and receiver tests (based on relevant sections of the 3GPP TS51010 and 3GPP 34121 documents)

## Suggested testing equipment

To perform production and post-production tests, you require appropriate testing equipment.

[Figure 8-2](#) on page 89 shows a suggested test station for use with devices incorporating AirPrime embedded modules, and [Recommended Dev Kit test setup](#) on page 90 shows a supported Dev kit setup.

In the test station as shown, a test computer coordinates testing between the host device with an integrated module and the measurement equipment. If the test computer does not have direct access to the module, then the host device must have custom software to forward instructions from the test computer to the module.

This suggested station setup includes:

- Audio analyzer—Evaluate Tx.
- Power meter—Evaluate current consumption for Tx and Rx in various modes.
- Signal generator—Evaluate Rx.

When using this setup, you can allow the signal generator to run continuously throughout the production testing procedure.

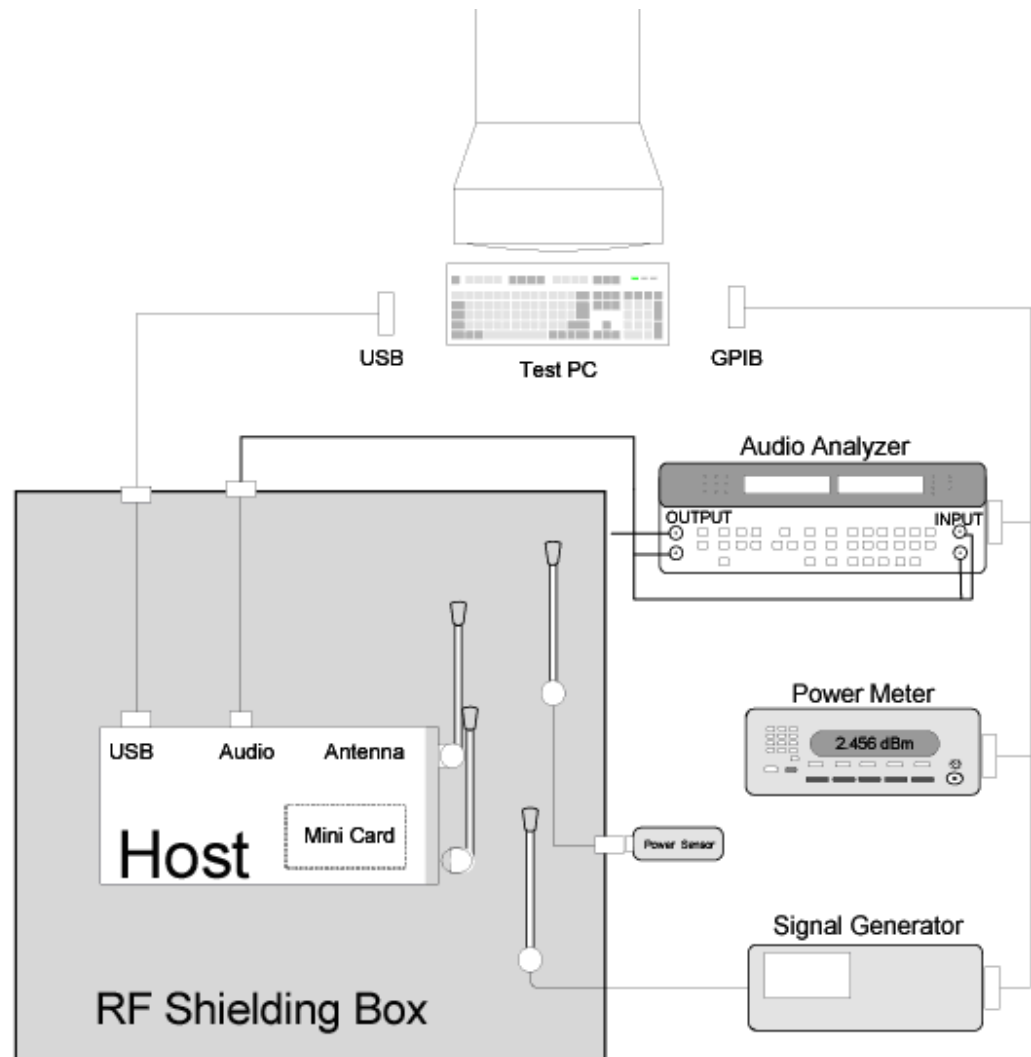


Figure 8-2: Recommended production test setup

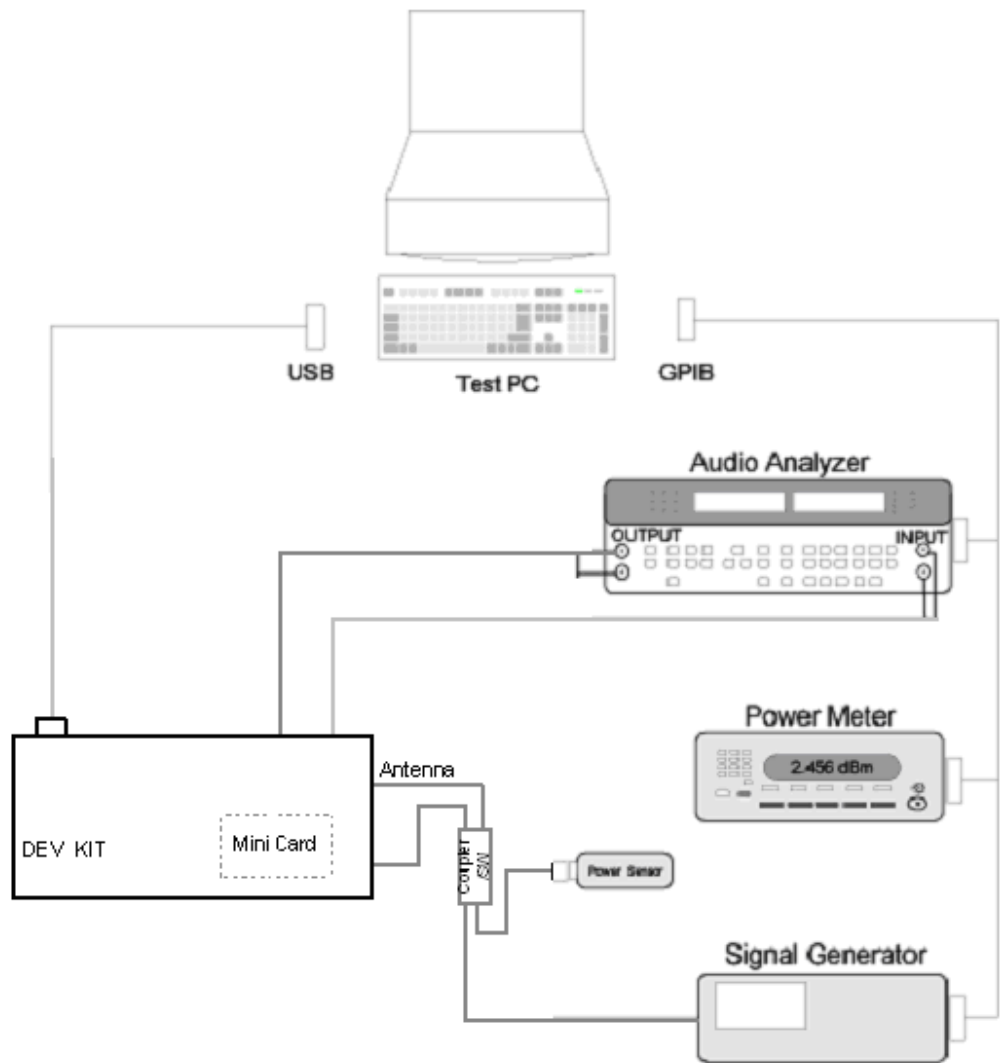


Figure 8-3: Recommended Dev Kit test setup

# »» A: Antenna Specification



This appendix describes electrical performance criteria for main path, diversity path, and GPS antennas used with AirPrime intelligent embedded modules.

## Required antennas

Table A-1 lists minimum required antenna types for each module and the maximum antenna gain, including cable loss, in a mobile-only exposure condition.

*Note: If your system uses both the MC8xxx and MC57xx, the five-band antenna can be used for both modules. However, improved antenna performance may be attained if a dual-band main-path antenna is designed and optimized specifically for the MC57xx.*

**Table A-1: Required antennas and maximum antenna gain by module**

Module	Antenna type (minimum)		Maximum antenna gain <sup>a</sup>	
	Main	Diversity/GPS	Cellular band (dBi)	PCS band (dBi)
<b>MC5727</b> <b>MC5727V</b> <b>MC5728V</b>	2-band (Cellular/PCS)	3-band (Cellular/PCS/GPS)	5.1	4.15
<b>MC8201</b>	N.America: 2-band (Cellular/PCS)	2-band (Cellular/PCS)	5	4
<b>MC8355</b>	6 bands WCDMA, 2 bands CDMA2000	TBD	TBD	TBD
<b>MC8700</b>	N.America: 2-band (Cellular/PCS) Eur/Asia: 3-band World: 5-band	N.America: 2-band (Cell/PCS) Eur/Asia: 2-band (Cell/IMT) World: 4-band (Cell/IMT/PCS)	8.22	3.5
<b>MC8775</b>	N.America: 2-band (Cellular/PCS) Eur/Asia: 3-band World: 5-band	n/a	5	4
<b>MC8775V</b>	N.America: 2-band (Cellular/PCS) Eur/Asia: 3-band World: 5-band	1-band (GPS)	5	4
<b>MC8780</b>	Eur/Asia: 3-band	3-band (Cellular/IMT/GPS)	5	4

**Table A-1: Required antennas and maximum antenna gain by module (Continued)**

Module	Antenna type (minimum)		Maximum antenna gain <sup>a</sup>	
	Main	Diversity/GPS	Cellular band (dBi)	PCS band (dBi)
<b>MC8781</b>	N.America: 2-band (Cellular/PCS)	3-band (Cellular/PCS/GPS)	5	4
<b>MC8704</b> <b>MC8705</b> <b>MC8790</b> <b>MC8790V</b> <b>MC8791V</b> <b>MC8792V</b> <b>MC8795V</b> <b>MC8801</b>	N.America: 2-band (Cellular/PCS) Eur/Asia: 3-band World: 5-band	N.America: 3-band (Cell/PCS/GPS) Eur/Asia: 3-band (Cell/IMT/GPS) World: 4-band (Cell/IMT/PCS/GPS)	5	4

a. Gain limits in this table are as reported on FCC grants for each module, for consideration against RF exposure and ERP/EIRP limits.

## Frequency bands

Table A-2 and Table A-3 summarize the frequency bands that must be supported by main, diversity, and GPS antennas for CDMA and UMTS modules.

**Table A-2: Supported CDMA frequency bands (MC57xx)**

Band	Antenna	Mode	Frequency range
Cell	Main/Diversity (Rx)	Tx	824–849
		Rx	869–894
PCS	Main/ Diversity (Rx)	Tx	1850–1910
		Rx	1930–1990
GPS	Diversity or separate GPS antenna	Rx	1574–1576

**Table A-3: Supported UMTS frequency bands<sup>a</sup>**

Frequency band	Frequency range (MHz)	Network types supported, by module <sup>b</sup>													
		8201	8355	8700	8704 8705	8775	8775V	8780	8781	8790 8790V	8791V	8792V	8795V	8801	
<b>Main antenna</b>															
<b>850<sup>c</sup> (North Am.)</b>	<b>Tx: 824–849 Rx: 869–894</b>	G,U	G,U	G,U	G,U	G,U	G,U	G,U	G,U	G,U	G,U	G	G	G,U	G,U
<b>900 (Europe)</b>	<b>Tx: 880–915 Rx: 925–960</b>		G,U	G,U	G,U	G	G	G	G	G	G	G	G,U	G,U	G,U
<b>1700 (North Am.)</b>	<b>Tx: 1710–1755 Rx: 2110–2155</b>		U												
<b>1800 (Europe)</b>	<b>Tx: 1710–1785 Rx: 1805–1880</b>		G	G	G	G	G	G	G	G	G	G	G	G	G

**Table A-3: Supported UMTS frequency bands<sup>a</sup> (Continued)**

Frequency band	Frequency range (MHz)	Network types supported, by module <sup>b</sup>												
		8201	8355	8700	8704 8705	8775	8775V	8780	8781	8790 8790V	8791V	8792V	8795V	8801
<b>1900 (North Am.)</b>	<b>Tx: 1850–1910 Rx: 1930–1990</b>	G,U	G,U	G,U	G,U	G,U	G,U	G,U	G,U	G,U	G	G,U	G,U	G,U
<b>2100 (Europe)</b>	<b>Tx: 1920–1980 Rx: 2110–2170</b>		U	U	U	U	U	U	U	U	U	U	U	U
<b>Diversity antenna (or Diversity/GPS antenna if GPS is enabled)</b>														
<b>UMTS 850 (North Am.)</b>	<b>Rx: 869–894</b>	Y		Y	Y			Y	Y	Y			Y	Y
<b>UMTS 900 (Europe)</b>	<b>Rx: 925–960</b>			Y	Y						Y	Y	Y	Y
<b>UMTS 1700 (North Am.)</b>	<b>Rx: 2110-2155</b>		Y											
<b>UMTS 1900 (PCS N.Am.)</b>	<b>Rx: 1930–1990</b>	Y		Y	Y				Y	Y	Y	Y	Y	Y
<b>UMTS 2100 (IMT Europe)</b>	<b>Rx: 2110–2170</b>			Y	Y			Y		Y	Y	Y	Y	Y
<b>GPS (World)</b>	<b>Rx: 1574–1576</b>		Y		Y			Y	Y	Y	Y	Y	Y	Y
<b>Separate GPS antenna</b>														
<b>GPS (World)</b>	<b>Rx: 1574–1576</b>						Y							Y

- a. Table entries show which bands are supported by each module. The actual bands used depend on the device location (North America, Europe, etc.). See [Table A-1](#) on page 91 for antenna requirements by region.
- b. G—GSM/GPRS/EDGE; U—UMTS; Y—Yes
- c. UMTS 800 (Band VI) is a subset of UMTS 850 (Band V)—An antenna supporting UMTS 850 therefore also supports UMTS 800.

## Antenna design

Design of main path, diversity path, and GPS antennas is determined by the host device OEM and their designated antenna designer.

---

*Note: Modems that support diversity and GPS can use the same secondary (diversity) antenna for both.*

---



---

*Note: Antennas should be designed **before** the industrial design is finished to make sure that the best antennas can be developed.*

---

## General antenna design requirements

In addition to passing the specific tests described in [Testing](#) on page 95, the main path and diversity/GPS path antennas should satisfy the following requirements:

- Antenna impedance at feeding terminal = 50 Ω (A simple matching circuit with six or fewer components is acceptable at the feeding terminal.)
- Nominally omni-directional radiation pattern in the azimuth plane

## Main antenna design requirements

In addition to passing the specific tests described in [Testing](#) on page 95, the main path antenna should satisfy the following requirement:

- Must handle 2 W RF power on low bands and 1 W on high bands.

Measure the power using the following criteria:

- Measure power endurance over a period of 4 hours (estimated talk time) using a 2 W CW signal—Set the frequency of the CW test signal to the middle of the PCS Tx band (1880 MHz for PCS).
- Visual inspection must prove there is no damage to the antenna structure and matching components.
- VSWR/TIS/TRP measurements taken before and after this test must show similar results.

## Diversity antenna design requirements

Antenna diversity is required for end user performance and enhanced coverage for specific devices listed in [Table A-2](#) on page 92 (CDMA devices) and [Table A-3](#) on page 92 (UMTS devices).

In addition to passing the specific tests described in [Testing](#) on page 95, the diversity path antenna should satisfy the following requirement:

- Receive performance, measured by forward link throughput, must be 0 to 3 dB better than a single antenna

## Performance goals

When designing the antenna system, consider the following performance goals:

- 0 dB gain antenna (or better)
- Diversity antenna receive performance to be similar to primary antenna
- Separation distance or polarity separation to achieve diversity antenna isolation of 10 dB (minimum). Otherwise the receive antenna picks up too much power radiating from the primary antenna

## GPS antenna design requirements

A second antenna is required to access GPS functionality. (Some modems support diversity and GPS using the same antenna.)

In addition to passing the specific tests described in [Testing](#) on page 95, the diversity path antenna should satisfy the following requirements:

- Field of view (FOV): Omni-directional in azimuth,  $-45^{\circ}$  to  $+90^{\circ}$  in elevation
- Polarization (average  $G_v/G_h$ ):  $> 0$  dB. Vertical linear polarization is sufficient (no need to optimize for circular polarization)
- Free space average gain ( $G_v+G_h$ ) over FOV:  $> -6$  dBi (preferably  $> -3$  dBi). Note: Average gain is the sum of average values ( $G_v + G_h$ ) where both  $G_v$  and  $G_h$  are measured (and averaged) over  $-45^{\circ}$  to  $+90^{\circ}$  in elevation and  $\pm 180^{\circ}$  in azimuth.

- 
- Maximum gain and uniform coverage in the high elevation angle and zenith. Gain in the azimuth plane is not desired.
  - Average 3D gain: > -5 dBi
  - Typical VSWR: < 2:1
  - Polarization: Any other than LHCP (left-hand circular polarized) is acceptable.

The same design procedures outlined in [Interference and sensitivity](#) on page 43 apply to the GPS path as well.

## Testing

The performance specifications described in this section are valid while the antenna is mounted in the host device with the antenna feed cable routed in its final application configuration.

The following guidelines apply to the tests in this section:

- Perform electrical measurements at room temperature (+20°C to +26°C) unless otherwise specified
- For main and diversity path antennas, make sure the antennas (including contact device, coaxial cable, connectors, and matching circuit with no more than six components, if required) have nominal impedances of 50  $\Omega$  across the frequency bands in [Table A-3](#) on page 92.
- All tests (except isolation/correlation coefficient)—Test the main or diversity antenna with the other antenna terminated.
- Any metallic part of the antenna system that is exposed to the outside environment needs to meet the electrostatic discharge tests per IEC61000-4-2 (conducted discharge +8kV).
- The functional requirements of the antenna system are tested and verified while the embedded module's antenna is integrated in the host device.

---

*Note: Additional testing, including active performance tests, mechanical, and accelerated life tests can be discussed with Sierra Wireless' engineering services. Contact your Sierra Wireless representative for assistance.*

---

## Voltage Standing Wave Ratio (VSWR)

Measure VSWR for each antenna (main, diversity) using the following criteria:

- Measure VSWR in free space at the antenna's coaxial connector (feeding terminal) when the antenna is installed in the host device with the cable routed to the Mini Card slot.
- Use an HP8753E network analyzer (or equivalent).

Refer to Product Specification documents for device-specific VSWR requirements.

## Radiated efficiency

[Table A-4](#) details the minimum total radiated efficiency for main and, if supported, diversity antennas.

**Table A-4: Minimum total radiated efficiency<sup>a</sup>**

Mode	Main	Diversity
Transmit (Tx)	50%	n/a
Receive (Rx)	30%	25%

a. Total efficiency is measured at the RF connector. It includes mismatch losses, losses in the matching circuit, and antenna losses.

## Antenna-to-antenna isolation

(Use a network analyzer to measure isolation between the main and secondary antenna pairs over the operating Tx/Rx frequency bands described in [Table A-3](#) on page 92.

[Table A-5](#) details the minimum isolation allowed over the various frequency bands for the applicable antenna pairs.

**Table A-5: Minimum Main–Secondary antenna isolation**

Antenna pair	Isolation (dB)		
	850/900 band	GPS band	DCS/PCS/UMTS band
Main/Diversity (Tx and Rx)	8 (cell)		8 (PCS/UMTS)
Main (Tx)/GPS	15	15	15

When you perform these tests:

- If the antennas can be moved, test all positions for both the main and secondary antennas.
- Collect worst-case isolation data.
- Make sure all other wireless devices (Bluetooth or WLAN antennas, etc.) are turned OFF to avoid interference. For details, see [Interference from other wireless devices](#) on page 44.

---

*Note: System performance below the minimum isolation specification could cause damage to the module, resulting in below-average system performance.*

---

---

## Peak gain and radiation patterns

[Table A-6](#) describes the peak and average antenna gain limits for the main path and diversity path antennas.

---

*Note: Sierra Wireless recommends using antenna efficiency as the **primary** parameter for evaluating the antenna system.*

*Peak gain is not a good indication of antenna performance when integrated with a host device; the antenna does **not** provide omni-directional gain patterns. Peak gain performance can be affected by parameters such as antenna size, location, design type, etc. The antenna gain patterns remain fixed unless one or more of these parameters change.*

---

**Table A-6: Peak and average antenna gain**

Antenna	Peak gain <sup>a</sup>	Average gain <sup>b</sup>
Main	> +1 dBi	> -3 dBi
Diversity	> -3 dBi	> -6 dBi

- a. Vertical/horizontal polarizations
- b. Vertical/horizontal polarizations combined, over  $\pm 45^\circ$  in elevation and  $\pm 180^\circ$  in azimuth

## Fading correlation coefficient

Measure the fading (envelope) correlation coefficient between the main and diversity antennas over the operating Rx frequency bands described in [Table A-3](#) on page 92.

The maximum allowed fading correlation coefficient over any of the bands is 0.5.



### Important notice

Because of the nature of wireless communications, transmission and reception of data can never be guaranteed. Data may be delayed, corrupted (i.e., have errors) or be totally lost. Although significant delays or losses of data are rare when wireless devices such as the Sierra Wireless modem are used in a normal manner with a well-constructed network, the Sierra Wireless modem should not be used in situations where failure to transmit or receive data could result in damage of any kind to the user or any other party, including but not limited to personal injury, death, or loss of property. Sierra Wireless and its affiliates accept no responsibility for damages of any kind resulting from delays or errors in data transmitted or received using the Sierra Wireless modem, or for failure of the Sierra Wireless modem to transmit or receive such data.

### Safety and hazards

Do not operate your MC57xx/MC8xxx modem:

- In areas where blasting is in progress
- Where explosive atmospheres may be present including refuelling points, fuel depots, and chemical plants
- Near medical equipment, life support equipment, or any equipment which may be susceptible to any form of radio interference. In such areas, the MC57xx/MC8xxx modem **MUST BE POWERED OFF**. Otherwise, the MC57xx/MC8xxx modem can transmit signals that could interfere with this equipment.

In an aircraft, the MC57xx/MC8xxx modem **MUST BE POWERED OFF**. Otherwise, the MC57xx/MC8xxx modem can transmit signals that could interfere with various onboard systems and may be dangerous to the operation of the aircraft or disrupt the cellular network. Use of a cellular phone in an aircraft is illegal in some jurisdictions. Failure to observe this instruction may lead to suspension or denial of cellular telephone services to the offender, or legal action or both.

Some airlines may permit the use of cellular phones while the aircraft is on the ground and the door is open. The MC57xx/MC8xxx modem may be used normally at this time.

## Important compliance information for North American users

The MC57xx/MC8xxx modem has been granted modular approval for mobile applications. Integrators may use the MC57xx/MC8xxx modem in their final products without additional FCC/IC (Industry Canada) certification if they meet the following conditions. Otherwise, additional FCC/IC approvals must be obtained.

1. At least 20 cm separation distance between the antenna and the user's body must be maintained at all times.
2. To comply with FCC / IC regulations limiting both maximum RF output power and human exposure to RF radiation, the maximum antenna gain including cable loss in a mobile-only exposure condition must not exceed the levels detailed in [Table A-1, Required antennas and maximum antenna gain by module](#), on page 91.
3. The MC57xx/MC8xxx modem and its antenna must not be co-located or operating in conjunction with any other transmitter or antenna within a host device.
4. A label must be affixed to the outside of the end product into which the MC57xx/MC8xxx modem is incorporated, with a statement similar to the following:
  - For MC5727/MC5727V:  
**This device contains FCC ID: N7N-MC5727**  
**This equipment contains equipment certified under IC: 2417C-MC5727**
  - For MC5728V:  
**This device contains FCC ID: N7N-MC5728**  
**This equipment contains equipment certified under IC: 2417C-MC5728**
  - For MC8201:  
**This device contains FCC ID: N7NMC8201**  
**This equipment contains equipment certified under IC: 2417C-MC8201**
  - For MC8355:  
**This device contains FCC ID: N7NMC8355**  
**This equipment contains equipment certified under IC: 2417C-MC8355**
  - For MC8700:  
**This device contains FCC ID: N7NMC8700**  
**This equipment contains equipment certified under IC: 2417C-MC8700**
  - For MC8704:  
**This device contains FCC ID: N7NMC8704**  
**This equipment contains equipment certified under IC: 2417C-MC8704**
  - For MC8705:  
**This device contains FCC ID: N7NMC8705**  
**This equipment contains equipment certified under IC: 2417C-MC8705**
  - For MC8775/MC8775V:  
**This device contains FCC ID: N7NMC8775**  
**This equipment contains equipment certified under IC: 2417C-MC8775**
  - For MC8780:  
**This device contains FCC ID: N7NMC8780**

- 
- For MC8781:  
**This device contains FCC ID: N7NMC8781**  
**This equipment contains equipment certified under IC: 2417C-MC8781**
  - For MC8790/MC8790V:  
**This device contains FCC ID: N7NMC8790**  
**This equipment contains equipment certified under IC: 2417C-MC8790**
  - For MC8792V:  
**This device contains FCC ID: N7NMC8792**  
**This equipment contains equipment certified under IC: 2417C-MC8792**
  - For MC8795V:  
**This device contains FCC ID: N7NMC8795**  
**This equipment contains equipment certified under IC: 2417C-MC8795**
  - For MC8801:  
**This device contains FCC ID: N7NMC8801**  
**This equipment contains equipment certified under IC: 2417C-MC8801**
5. A user manual with the end product must clearly indicate the operating requirements and conditions that must be observed to ensure compliance with current FCC / IC RF exposure guidelines.

The end product with an embedded MC57xx/MC8xxx modem may also need to pass the FCC Part 15 unintentional emission testing requirements and be properly authorized per FCC Part 15.

**Note:** If this module is intended for use in a portable device, you are responsible for separate approval to satisfy the SAR requirements of FCC Part 2.1093 and IC RSS-102.

## EU regulatory conformity

Sierra Wireless hereby declares that the MC8700, MC8775, MC8775V, MC8780, MC8790, MC8790V, MC8791V, MC8792V, MC8795V, and MC8801 modems conform with all essential requirements of Directive 1999/5/EC.

MC8775, MC8775V, MC8780, MC8790, MC8790V, MC8791V, MC8792V:

**CE 0682**

MC8795V:

**CE 0168**

MC8700:

**CE 0678**

The Declaration of Conformity made under Directive 1999/5/EC is available for viewing at the following location in the EU community:

Sierra Wireless (UK), Limited  
Lakeside House  
1 Furzeground Way, Stockley Park East  
Uxbridge, Middlesex  
UB11 1BD  
England

## Brazil ANATEL homologation

(MC8790 somente) Este produto está homologado pela ANATEL, de acordo com os procedimentos regulamentados pela Resolução 242/2000, e atende aos requisitos técnicos aplicados.

Para maiores informações, consulte o site da ANATEL [www.anatel.gov.br](http://www.anatel.gov.br).

Modelo: MC8790



0688-09-1568



(01)07898912207166

## »» C: MC5728V Important Signal Considerations - Application Note

C

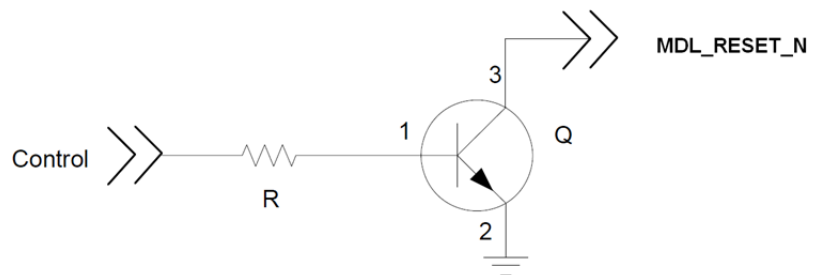
### MDL\_RESET\_N — Module reset input

The MDL\_RESET\_N signal (pin 33) is an input to the MC5728V module from the host device to initiate a reset of the module.

When integrating with your host device, keep the following in mind.

- This signal is an input to the module and should be driven LOW only for its active state (RESET); otherwise it should be floating or (High impedance). It should never be driven to a logic high level. At module power-up, the Baseband processor holds this signal LOW for a pre-determined time; the host must not interfere with this sequence (by attempting to drive the signal HIGH). If the host does not comply with this, unwanted behavior and an unknown state of the module may occur.
- If the host never needs to assert a reset to the MC5728V module, leave this signal unconnected from the host interface. The figure below shows good design practice for connecting the MDL\_RESET\_N signal. This allows for open collector output when not being asserted by the host device.

**Figure C-1: Recommended MDL\_RESET\_N connection**



## W\_Disable# — Wireless disable

The W\_Disable# signal (pin 20) is an input to the module from the host device to control the Power state (power on and shutdown of the MC5728V module, depending on the state of the signal).

When integrating with your host device, keep the following in mind.

- This signal is an input to the module and should be driven LOW only for its active state (controlling the power state); otherwise it should be floating or (High impedance). It should never be driven to a logic high level. The MC5728V module has an internal pull-up resistor to Module Power (3.3V) in place, so if the signal is floating or (high impedance), the module will power on.
- If the host never needs to assert this power state control to the MC5728V module, leave this signal unconnected from the host interface. [Figure 2-1](#) on page 17 shows good design practice for connecting the W\_Disable# signal. This allows for open collector output when not being asserted by the host device.

## »» D: Acronyms and Definitions

D

**Table D-1: Acronyms and definitions**

Acronym or term	Definition
AGC	Automatic Gain Control
BER	Bit Error Rate - a measure of receive sensitivity
BLER	Block Error Rate
Call Box	Base Station Simulator - Agilent E8285A or 8960, Rohde & Schwarz CMU200
CDMA	Code Division Multiple Access
dB	Decibel = $10 \times \log_{10} (P1/P2)$ <i>P1 is calculated power; P2 is reference power</i>  Decibel = $20 \times \log_{10} (V1/V2)$ <i>V1 is calculated voltage, V2 is reference voltage</i>
dBm	Decibels, relative to 1 mW - Decibel(mW) = $10 \times \log_{10} (Pwr (mW)/1mW)$
DUT	Device Under Test
EDGE	Enhanced Data rates for GSM Evolution
EM	Embedded Module
ESD	ElectroStatic Discharge
FER	Frame Error Rate - a measure of receive sensitivity
GPRS	General Packet Radio Services
GPS	Global Positioning System
GSM	Global System for Mobile communications
Hz	Hertz = 1 cycle/second
inrush current	Peak current drawn when a device is connected or powered on
IS-2000	3G radio standards for voice and data (CDMA only)
IS-95	2G radio standards targeted for voice (cdmaONE)
LDO	Low Drop Out - refers to linear regulator
MC5727/MC5727V/ MC5728V	Sierra Wireless AirPrime embedded modules used on CDMA networks
MC57xx	Any of the following CDMA AirPrime embedded modules: MC5727/ MC5727V/MC5728V

**Table D-1: Acronyms and definitions**

Acronym or term	Definition
MC8201/MC8355/ MC8700/MC8704/ MC8705/MC8775/ MC8775V /MC8780/ MC8781/MC8790/ MC8790V/MC8791V/ MC8792V/MC8795V/ MC8801	Sierra Wireless AirPrime embedded modules used on GSM/UMTS networks
MC8xxx	Any of the following GSM/UMTS AirPrime embedded modules: MC8201/ MC8355/MC8700/MC8704/MC8705/MC8775/MC8775V/MC8780/ MC8781/MC8790/MC8790V/MC8791V/MC8792V/MC8795V/MC8801
MHz	MegaHertz = 10E6 Hertz (Hertz = 1 cycle/second)
MIO	Module Input/Output
MPE	Maximum Permissible Exposure—the level of radiation to which a person may be exposed without hazardous effect or adverse biological changes
OTA	Over-The-Air or Radiated through the antenna
PCS	Personal Communication System - PCS spans the 1.9 GHz radio spectrum
RF	Radio Frequency
RMS	Root Mean Square
SA	Selective Availability
Sensitivity (Audio)	Measure of lowest power signal that the receiver can measure
Sensitivity (RF)	Measure of lowest power signal at the receiver input that can provide a prescribed BER/BLER/SNR value at the receiver output.
SIM	Subscriber Identity Module
SNR	Signal to Noise Ratio
SOF	Start of Frame - a USB function
UART	Universal Asynchronous Receiver Transmitter
UDK	Universal Development Kit (PCI Express Mini Card Dev Kit)
UMTS	Universal Mobile Telecommunications System
USB	Universal Serial Bus
USIM	Universal Subscriber Identity Module
VCC	Supply voltage (3.8 V for MC8201, 3.3 V for all others)
WCDMA	Wideband Code Division Multiple Access—In this document, the term “UMTS” is used instead of “WCDMA”.
XIM	In this document, XIM is used as part of the contact identifiers for the USIM interface (XIM_VCC, XIM_CLK, etc.).

# Index

## Numerics

- 1X
  - CDMA Standard, 13

## A

- acceptance tests, 71
- acronyms and definitions, 105–106
- airplane mode, 19
- anechoic chamber, OTA testing, 46
- antenna
  - connection and mounting points, 41
  - connection considerations, 41
  - custom, considerations, 42
  - design requirements, diversity antenna, 94
  - design requirements, general, 93
  - design requirements, GPS, 94
  - design requirements, main antenna, 94
  - diversity, 94
  - diversity antenna, disabling, 43
  - frequency bands, supported, 92
  - GPS, 94
  - limit, matching coaxial connections, 41
  - location, considerations, 43
  - matching, considerations, 42
  - maximum cable loss, 41
  - specification, 91–97
  - testing, 95
- antennas
  - design checklist, 69
  - required, by module type and gain, 91
- AT commands
  - 3GPP specification, details, 13
  - extended, MC57xx, 62
  - extended, MC8xxx, 63
  - extended, overview, 62
  - low power mode, setting, 19
  - standard, MC57xx (reference document), 14
  - standard, MC8xxx (reference document), 15
- AT commands, extended
  - MC57xx, reference, 14
  - MC8xxx, reference, 15
- AT commands, standard
  - MC57xx, reference, 14
  - MC8xxx, reference, 15

- audio
  - features, summary, 49
  - functions, host-controlled, 56
  - functions, module-controlled, 56
  - functions, responsible codecs, 50
  - interface, 49–56
  - path mixing, host-controlled, 56
  - path switching, host-controlled, 56
  - PCM digital, signal interface, 56
  - primary, signal interface, 55
  - signal interface, 55
  - system block diagram, MC5728V, 51
  - system block diagram, MC87xxV, 52
- audio modes, supported, 53
- audio pass band, 49
- audio passband, Rx and Tx, 55
- automatic gain control (AGC)
  - module-controlled, 56

## B

- BER (Bit Error Rate), 47
- bit error rate (BER)
  - measure of sensitivity, MC8xxx, 47

## C

- cable loss
  - antenna, maximum, 41
- capacitance
  - inrush current, effect on, 25
- capacitors
  - with USIM, 62
  - with XIM\_DATA / XIM\_CLK, 61
- car kit audio mode, 49
- car kit mode
  - echo cancellation, 55
- CDMA
  - 1X Standard, 13
- cellular band
  - RF parameters, MC57xx, 39
- certification tests, 72
- checklist, design, 69
- CnS
  - MC57xx reference, 13
  - MC87xx reference, 15
  - notification issued, state change
    - temperature, 23
    - voltage, 21
  - voice reference, 15
- CnS commands
  - low power mode, setting, 19
- codec
  - for audio functions, 50
- comfort noise
  - module-controlled, 56

communications, host to modem  
 design checklist, 70

connection  
 grounding, 42

connectors, required  
 EDGE mating (52-pin), 12  
 host-module, 12  
 RF, Hirose, 12  
 USIM, 12

current  
 consumption, 26–38  
 consumption, usage models, 38  
 peak inrush current, calculation, 25  
 specifications, MC57xx, 27–28  
 specifications, MC8201, 28–29  
 specifications, MC8355, 29  
 specifications, MC8700, 29–30  
 specifications, MC8704, 30–31  
 specifications, MC8705, 30–31  
 specifications, MC8775/75V, 31–32  
 specifications, MC8780/81, 33  
 specifications, MC8790/90V/91V/92V/95V, 34  
 specifications, MC8795V, 35  
 specifications, MC8801, 36

current, consumption, 27

## D

desense. See RF

design checklist  
 antennas, 69  
 component placement, 69  
 EMI/ESD, 70  
 host/modem communications, 70  
 power, 69  
 thermal, 70

device  
 positioning, sensitivity testing, 47

disconnected, module power state, 19

diversity antenna  
 disabling, 43

DTMF  
 codec, 50  
 module-controlled, 56

## E

echo cancellation  
 audio feature, 49  
 codec, 50  
 details, 54  
 module-controlled, 56  
 support, all modes, 54

EDGE connector, manufacturers, 12

efficiency  
 test criteria, 96

electrostatic discharge. See ESD

ESD  
 design checklist, 70  
 protection requirements, 18  
 testing techniques document (IEC-61000-4-2), 14

## F

fading correlation coefficient  
 test criteria, 97

FCC  
 regulations, relevant section, 14

FER (Frame Error Rate), 47

filtering  
 high pass / slope filtering, module-controlled, 56

filtering stages, audio, 49

filtering, RF desense, 45

FIR filtering  
 audio feature, 49  
 codec, 50  
 module-controlled, 56

frame error rate (FER)  
 measure of sensitivity, MC57xx, 47

frequency bands, supported, 92

## G

gain  
 codec, 50  
 distribution, audio, 54  
 limits, adjustable, 49

gain, antenna  
 test criteria, 97

GPS band  
 RF parameters, MC57xx, 39

grounding  
 connection considerations, 42

## H

handset audio mode, 49

handset mode  
 echo cancellation, 54

handshaking  
 USB, 58

headset audio mode, 49

headset mode  
 echo cancellation, 54

Host-Module interface, 57–65

## I

I/O rise time requirements, 61

impedance  
 module-antenna, 43  
 USIM, 61

- inrush currents
  - description, 24
  - host power supply applied, 25
  - model, MC57xx, 24
  - model, MC8xxx, 24
  - W\_Disable# deasserted, 25
- interface
  - audio signal, 55
- interference
  - device generated, 44
  - power supply noise, 43
  - wireless devices, 44
- isolation
  - test criteria, 96
- L**
- LED
  - example, 59
  - states, 59
- low power mode
  - setting, AT commands, 19
  - setting, CnS commands, 19
  - state change from normal, temperature, 23
  - state change from normal, voltage, 21
  - state change to normal, temperature, 23
  - state change to normal, voltage, 21
- low power, module power state, 19
- M**
- MC5727
  - AT commands, extended, 62
  - AT reference (extended), 14
  - AT reference (standard), 14
  - CnS reference, 13
  - networks supported, 11
  - product specification, 14
- MC5727V
  - AT commands, extended, 62
  - AT reference (extended), 14
  - AT reference (standard), 14
  - audio interface, supported, 49
  - CnS reference, 13
  - networks supported, 11
  - product specification, 14
- MC5728V
  - AT commands, extended, 62
  - AT reference (extended), 14
  - AT reference (standard), 14
  - audio interface, supported, 49
  - CnS reference, 13
  - important signal considerations, 103
  - networks supported, 11
  - product specification, 14
- MC57xx
  - current specifications, 27–28
  - sensitivity test results, 48
  - sensitivity, defined, 47
- MC8201
  - current specifications, 28–29
  - networks supported, 11
  - product specification, 14
- MC8355
  - current specifications, 29
  - product specification, 14
- MC8700
  - AT reference (extended), 15
  - AT reference (standard), 15
  - CnS reference, and MC87xx, 15
  - current specifications, 29–30
  - networks supported, 11
  - product specification, 14
- MC8704
  - current specifications, 30–31
  - networks supported, 11
  - product specification, 14
- MC8705
  - current specifications, 30–31
  - networks supported, 11
  - product specification, 14
- MC8775
  - AT reference (extended), 15
  - AT reference (standard), 15
  - CnS reference, and MC87xx, 15
  - current specifications, 31–32
  - networks supported, 11
  - product specification, 14
- MC8775V
  - AT reference (extended), 15
  - AT reference (standard), 15
  - audio interface, supported, 49
  - CnS reference, and MC87xx, 15
  - CnS voice reference, and MC87xxV, 15
  - current specifications, 31–32
  - networks supported, 11
  - product specification, 14
- MC8780
  - AT reference (extended), 15
  - AT reference (standard), 15
  - CnS reference, and MC87xx, 15
  - current specifications, 33
  - networks supported, 11
  - product specification, 14
- MC8781
  - AT reference (extended), 15
  - AT reference (standard), 15
  - CnS reference, and MC87xx, 15
  - current specifications, 33
  - networks supported, 11
  - product specification, 14

- MC8790
    - AT reference (extended), [15](#)
    - AT reference (standard), [15](#)
    - CnS reference, and MC87xx, [15](#)
    - current specifications, [34](#)
    - networks supported, [11](#)
    - product specification, [14](#)
  - MC8790V
    - AT reference (extended), [15](#)
    - AT reference (standard), [15](#)
    - audio interface, supported, [49](#)
    - CnS reference, and MC87xx, [15](#)
    - CnS voice reference, and MC87xxV, [15](#)
    - current specifications, [34](#)
    - networks supported, [11](#)
    - product specification, [14](#)
  - MC8791V
    - AT reference (extended), [15](#)
    - AT reference (standard), [15](#)
    - audio interface, supported, [49](#)
    - CnS reference, and MC87xx, [15](#)
    - CnS voice reference, and MC87xxV, [15](#)
    - current specifications, [34](#)
    - networks supported, [11](#)
    - product specification, [14](#)
  - MC8792V
    - AT reference (extended), [15](#)
    - AT reference (standard), [15](#)
    - audio interface, supported, [49](#)
    - CnS reference, and MC87xx, [15](#)
    - CnS voice reference, and MC87xxV, [15](#)
    - current specifications, [34](#)
    - networks supported, [11](#)
    - product specification, [14](#)
  - MC8795V
    - AT reference (extended), [15](#)
    - AT reference (standard), [15](#)
    - audio interface, supported, [49](#)
    - CnS reference, and MC87xx, [15](#)
    - CnS voice reference, and MC87xxV, [15](#)
    - current specifications, [35](#)
    - networks supported, [11](#)
    - product specification, [15](#)
  - MC8801
    - current specifications, [36](#)
    - product specification, [15](#)
  - MC8xxx
    - AT commands, extended, [63](#)
    - sensitivity, defined, [47](#)
  - MDL\_RESET\_N (MC5728V), [103](#)
  - Mini Card
    - Dev Kit Quick Start Guide, [15](#)
    - PCI Express Specification, [15](#)
    - See also MC5727, MC5727V, MC5728V, MC8201, MC8355, MC8700, MC8704, MC8705, MC8775, MC8775V, MC8780, MC8781, MC8790, MC8790V, MC8791V, MC8792V, MC8795V, MC8801
  - minicom
    - downloading and installing, [78](#)
  - mixing
    - codec, [50](#)
  - modes
    - deep sleep, description, [37](#)
    - operating, [37](#)
    - shutdown, description, [37](#)
    - sleep, description, [37](#)
    - transmit / receive, description, [37](#)
  - module
    - power states, [18–23](#)
- ## N
- noise
    - leakage, minimizing, [42](#)
    - RF interference, power supply, [43](#)
  - noise suppression
    - audio feature, [49](#)
    - module-controlled, [56](#)
  - normal mode
    - state change from low power, temperature, [23](#)
    - state change from low power, voltage, [21](#)
    - state change to low power, temperature, [23](#)
    - state change to low power, voltage, [21](#)
  - normal, module power state, [19](#)
- ## O
- off, module power state, [19](#)
  - output driver stage, audio feature, [49](#)
- ## P
- path loss, OTA testing, [47](#)
  - path switching
    - codec, [50](#)
  - PCB
    - multi-layer, shielding for RF desense, [45](#)
  - PCI Express
    - Mini Card specification, [15](#)
  - PCM digital audio, signal interface, [56](#)
  - PCS band
    - RF parameters, MC57xx, [39](#)
  - polyphonic ringtone
    - host-controlled, [56](#)

## power

- consumption, MC8xxx, 37
  - current consumption, overview, 27
  - default state, 19
  - design checklist, 69
  - disconnected, characteristics, 19
  - normal, characteristics, 19
  - off, characteristics, 19
  - off, state change, temperature, 23
  - off, state change, voltage, 21
  - power-up timing, 25
  - ramp-up timing, 25
  - required supply voltage, 17
  - signals, overview, 17
  - state machine, temperature monitoring, 22–23
  - state machine, voltage monitoring, 20–21
  - state, disconnected, 19
  - state, low power, 19
  - state, normal, 19
  - state, off, 19
  - states, module, 18–23
  - supply, RF interference, 43
  - supply, ripple limit, 43
  - transmit, wave form, 26
- power interface, 17–38
- product specification (PSD), 14
- production tests, 73
- PSD (Product Specification Document), 14

## Q

- quality assurance tests, 88

## R

- regulatory information, 99–102
  - Brazil, 102
  - EU, 101
  - FCC, 100
  - limitation of liability, 99
  - safety and hazards, 99
- reset module, input (MC5728V), 103
- resistors, external pull-up, 61
- resume
  - mode, USB, 58

## RF

- antenna cable loss, maximum, 41
- antenna connection, considerations, 41
- cable type, required, 12
- desense
  - device-generated, 44
  - harmonic energy, filtering, 45
  - mitigation suggestions, 45
  - shielding suggestions, 45
- integration, 39–48
- interference
  - other devices, 44
  - power supply, 43
  - wireless devices, 44
- level lowered automatically, high temperature, 23
- parameters
  - cellular band, MC57xx, 39
  - GPS, MC57xx, 39
  - PCS band, MC57xx, 39
- ringer tone
  - codec, 50
- ringers
  - module-controlled, 56
- ringtone, polyphonic
  - host-controlled, 56
- Rx band
  - RF parameters, MC57xx, 39
- Rx sensitivity
  - RF parameter, MC57xx, 39
  - RF parameter, MC8xxx, 39

## S

- SCI (Slot Cycle Index), 28
- SED
  - see Smart Error Detection
- sensitivity
  - defined, MC57xx and MC87xx, 47
  - MC57xx, defined (frame error rate), 47
  - MC8xxx, defined (bit error rate), 47
  - radiated measurement, overview, 45
  - RF parameter, MC57xx, 39
  - RF parameter, MC8xxx, 39
  - test results
    - MC57xx, 48
  - testing
    - device under test, positioning, 47
    - testing, overview, 45
    - testing, path loss calculation, 47
- sensitivity, OTA test chamber configuration, 46
- shielding
  - module, compliance, 42
  - reducing RF desense, 45
- sidetone
  - responsible codec, 56
  - support, 53
- SIM
  - testing methods, MS conformance specification, 15
  - See also USIM

- Slot Cycle Index, [28](#)
- Smart Error Detection
  - detecting module reset, [37](#)
- speakerphone audio mode, [49](#)
- speakerphone mode
  - echo cancellation, [55](#)
- state machine
  - temperature monitoring, [22–23](#)
  - voltage monitoring, [20–21](#)
- suspend
  - mode, USB, [58](#)
- system block, audio
  - MC5728V, [51](#)
  - MC87xxV, [52](#)

## T

- temperature, module. See thermal
- test
  - efficiency, [96](#)
  - fading correlation coefficient, [97](#)
  - gain, antenna, [97](#)
  - isolation, [96](#)
  - VSWR (Voltage Standing Wave Ratio), [95](#)
- testing
  - overview, [71](#)
  - acceptance tests, [71](#)
  - audio loop-back, MC5727V / MC5728V / MC8775V / MC8790V / MC8791V / MC8792V / MC8795V, [86](#)
  - certification tests, [72](#)
  - equipment, suggested, [88](#)
  - ESD immunity, techniques document (IEC-61000-4-2), [14](#)
  - GPS receiver, MC8775V, [85](#)
  - manual functional test, suggested, [73](#)
  - production tests, [73](#)
  - quality assurance tests, [88](#)
  - RF receive path, MC57xx, [81](#)
  - RF receive path, MC87xx, [83](#)
  - RF transmission path, MC57xx, [78](#)
  - RF transmission path, MC87xx, [79](#)
  - sensitivity, OTA test chamber configuration, [46](#)
  - suggestions, [71–90](#)
- testing, path loss calculation, [47](#)
- thermal
  - considerations, [67–68](#)
  - design checklist, [70](#)
  - dissipation, factors affecting, [67](#)
  - dissipation, suggestions, [67](#)
  - RF shield temperature, maximum, [68](#)
  - testing, module, [67–68](#)
- timing
  - power ramp-up, [25](#)
  - power-up, [25](#)
- transducer interface
  - host-controlled, [56](#)
- transducer interfaces
  - codec, [50](#)
- transmit power wave form, [26](#)

- Tx band
  - RF parameters, MC57xx, [39](#)
- Tx power
  - RF parameters, MC57xx, [39](#)

## U

- UDK (Universal Development Kit)
  - components, included, [12](#)
- Universal Development Kit (UDK)
  - components, included, [12](#)
- Universal Serial Bus. See USB.
- usage models
  - current consumption, [38](#)
- USB
  - enumeration, power-up, [25](#)
  - handshaking, [58](#)
  - host driver requirements, [58](#)
  - interface
    - host-to-module communication, [57–59](#)
    - overview, [57](#)
  - resume mode, [58](#)
  - specification, [15](#)
  - suspend mode, [58](#)

## USIM

- capacitor recommendations, [62](#)
- card contacts, [61](#)
- clock rate, [62](#)
- connector type, required, [12](#)
- electrical specifications, [61](#)
- impedance, connectors, [61](#)
- interface diagram, [60](#)
- interface, overview, [60](#)
- operation, [61–62](#)
- pin assignments, [60](#)
- socket placement, [62](#)

## V

- voice memo
  - host-controlled, [56](#)
- Voltage Standing Wave Ratio (VSWR)
  - test criteria, [95](#)
- volume, setting
  - responsible codec, [56](#)
- VSWR (Voltage Standing Wave Ratio)
  - test criteria, [95](#)

## W

- W\_Disable#
  - deasserted, causes inrush current event, [25](#)
  - de-asserted, peak current, [25](#)
  - inrush currents, [24](#)
  - MC5728V information, [104](#)
  - Normal state, [19](#)
  - off state, [19](#)

**Z**

ZIF (Zero Intermediate Frequency), [43](#)





