



# AirPrime XP2210

## Development Kit User Guide



**SIERRA**  
WIRELESS®

41113736  
Rev 2.0

## Important Notice

Due to the nature of wireless communications, transmission and reception of data can never be guaranteed. Data may be delayed, corrupted (i.e., have errors) or be totally lost. Although significant delays or losses of data are rare when wireless devices such as the Sierra Wireless product are used in a normal manner with a well-constructed network, the Sierra Wireless product should not be used in situations where failure to transmit or receive data could result in damage of any kind to the user or any other party, including but not limited to personal injury, death, or loss of property. Sierra Wireless accepts no responsibility for damages of any kind resulting from delays or errors in data transmitted or received using the Sierra Wireless product, or for failure of the Sierra Wireless product to transmit or receive such data.

## Safety and Hazards

Do not operate the Sierra Wireless product in areas where blasting is in progress, where explosive atmospheres may be present, near medical equipment, near life support equipment, or any equipment which may be susceptible to any form of radio interference. In such areas, the Sierra Wireless product **MUST BE POWERED OFF**. The Sierra Wireless product can transmit signals that could interfere with this equipment.

Do not operate the Sierra Wireless product in any aircraft, whether the aircraft is on the ground or in flight. In aircraft, the Sierra Wireless product **MUST BE POWERED OFF**. When operating, the Sierra Wireless product can transmit signals that could interfere with various onboard systems.

---

*Note: Some airlines may permit the use of cellular phones while the aircraft is on the ground and the door is open. Sierra Wireless products may be used at this time.*

---

The driver or operator of any vehicle should not operate the Sierra Wireless product while in control of a vehicle. Doing so will detract from the driver or operator's control and operation of that vehicle. In some states and provinces, operating such communications devices while in control of a vehicle is an offence.

## Limitation of Liability

The information in this manual is subject to change without notice and does not represent a commitment on the part of Sierra Wireless. SIERRA WIRELESS AND ITS AFFILIATES SPECIFICALLY DISCLAIM LIABILITY FOR ANY AND ALL DIRECT, INDIRECT, SPECIAL, GENERAL, INCIDENTAL, CONSEQUENTIAL, PUNITIVE OR EXEMPLARY DAMAGES INCLUDING, BUT NOT LIMITED TO, LOSS OF PROFITS OR REVENUE OR ANTICIPATED PROFITS OR REVENUE ARISING OUT OF THE USE OR INABILITY TO USE ANY SIERRA WIRELESS PRODUCT, EVEN IF SIERRA WIRELESS AND/OR ITS AFFILIATES HAS BEEN ADVISED OF THE POSSIBILITY OF SUCH DAMAGES OR THEY ARE FORESEEABLE OR FOR CLAIMS BY ANY THIRD PARTY.

Notwithstanding the foregoing, in no event shall Sierra Wireless and/or its affiliates aggregate liability arising under or in connection with the Sierra Wireless product, regardless of the number of events, occurrences, or claims giving rise to liability, be in excess of the price paid by the purchaser for the Sierra Wireless product.

## Patents

This product may contain technology developed by or for Sierra Wireless Inc. This product is manufactured or sold by Sierra Wireless Inc. or its affiliates under one or more patents licensed from MMP Portfolio Licensing.

## Copyright

© 2020 Sierra Wireless. All rights reserved.

## Trademarks

Sierra Wireless<sup>®</sup>, AirPrime<sup>®</sup>, AirLink<sup>®</sup>, AirVantage<sup>®</sup> and the Sierra Wireless logo are registered trademarks of Sierra Wireless.

Windows<sup>®</sup> and Windows Vista<sup>®</sup> are registered trademarks of Microsoft Corporation.

Other trademarks are the property of their respective owners.

## Contact Information

Sales information and technical support, including warranty and returns	Web: <a href="http://sierrawireless.com/company/contact-us/">sierrawireless.com/company/contact-us/</a> Global toll-free number: 1-877-687-7795 6:00 am to 5:00 pm PST
Corporate and product information	Web: <a href="http://sierrawireless.com">sierrawireless.com</a>

## Revision History

Revision number	Release date	Changes
1.0	March 05, 2020	Creation
1.1	March 10, 2020	page 7 - Change "Active" to "Passive" page 8 - Remove Update images
2.0	April 14, 2020	Minor text edits Updated <a href="#">Figure 4-5</a> Updated Map description on <a href="#">page 17</a>

# Contents

<b>Introduction</b> .....	<b>5</b>
<b>Hardware Overview</b> .....	<b>6</b>
<b>Interfaces</b> .....	<b>7</b>
Module .....	7
Antenna Connection .....	8
SYSTEM0 .....	8
I2C .....	9
BOOT Mode .....	10
1PPS / INT .....	11
WAKE UP .....	12
NRESET .....	12
Micro-B USB .....	13
<b>Software Usage</b> .....	<b>14</b>
System Requirements .....	14
USB Driver and GNSS Tool .....	14
Installing the USB Driver .....	15
Using GNSS Tool .....	17
<b>Troubleshooting</b> .....	<b>19</b>
Setup Troubleshooting .....	19
Causes of Poor GNSS Signals .....	20
<b>References</b> .....	<b>22</b>

# 1: Introduction

The main purpose of the Development Kit is to simplify the evaluation process for GNSS modules and to help testers operate our products with convenience and ease.

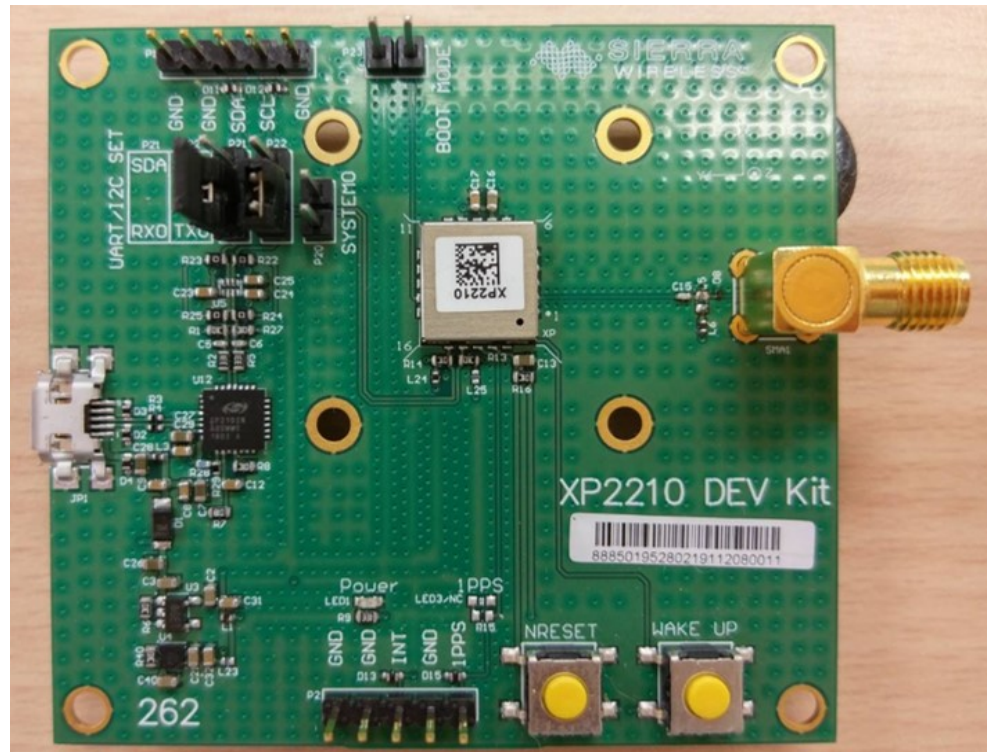


Figure 1-1: Development Kit

This device can communicate with computer devices via USB cable, and it must be used in conjunction with the software, **GNSS Tool**, for users to record all module data such as satellites' status, time-to-first-fix (TTFF), date and time.

---

**Note:**

- *The GNSS signal may be cut off or become seriously weakened if you operate the Development Kit inside any infrastructure such as buildings, tunnels, or near any huge objects and/or obstruction. Signal being cut off does not mean the Development Kit has malfunctioned; it will operate properly again once it receives clear GNSS signals (works normally under the open sky).*
  - *Select a suitable external passive antenna based on the satellite system that you use.*
-

## 2: Hardware Overview

The following figure identifies the location of the Development Kit's connectors and other components.

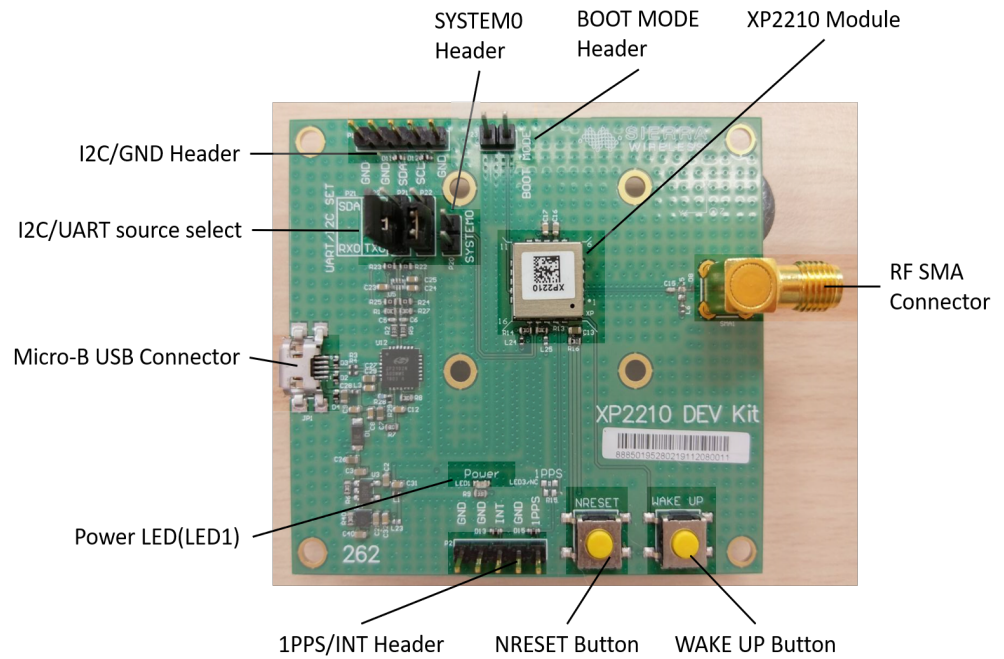


Figure 2-1: Development Kit Connectors and Components

Refer to the subsequent chapter, [Interfaces](#) on page 7, for detailed description.

### Passive Antenna: Do not install L5.

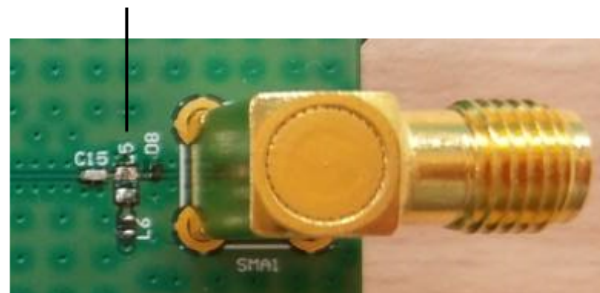


Figure 2-2: RF SMA Connector

## 3: Interfaces

This section describes the physical interfaces available on the Development Kit.

### Module

The Development Kit includes an XP2210 module.



Figure 3-1: XP2210 on the Development Kit

**Table 3-1: Module Details**

Component	PCB Label	Description
Module	XP	XP2210 module

---

**Important:** *The XP2210 requires an external RF antenna to be connected to the RF SMA connector of the Development Kit.*

---

## Antenna Connection

The RF SMA connector is used to connect an external antenna for the XP2210 module.



Figure 3-2: RF SMA Connector

**Table 3-2: Antenna Connector Details**

Component	PCB Label	Description
RF SMA Connector	SMA1	External antenna connector for the XP2210 module

## SYSTEM0

The SYSTEM0 header is used to set whether transmissions are done via UART or I2C.

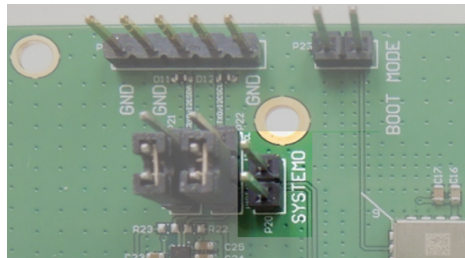


Figure 3-3: SYSTEM0 Header

**Table 3-3: SYSTEM0 Details**

Component	PCB Label	Description
2-pin header	P20	<ul style="list-style-type: none"> <li>Transmission selection (UART or I2C)</li> <li>SYSTEM0: 0=I2C; 1=UART</li> </ul>

To set transmission selection to UART, disconnect jumper on SYSTEM0 for SYSTEM0 pins to pull high (default).

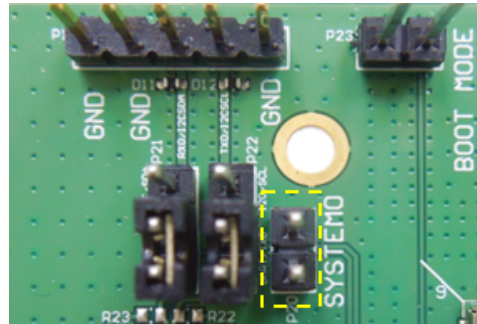


Figure 3-4: No Jumper on SYSTEM0 for UART Transmission

To set transmission selection to I2C, short SYSTEM0 with a jumper. SYSTEM0 pins will then enter pull low status. The Development Kit must then be re-powered (by unplugging then replugging the power supply), after which the NRESET button must be pressed to reboot the module to change transmission selection from UART to I2C.

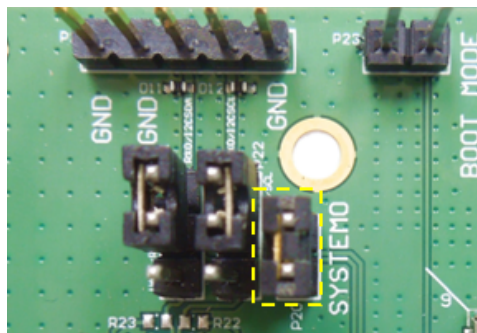


Figure 3-5: Jumper Across SYSTEM0 for I2C Transmission

## I2C

Connectivity to peripheral devices are available through the I2C interface.

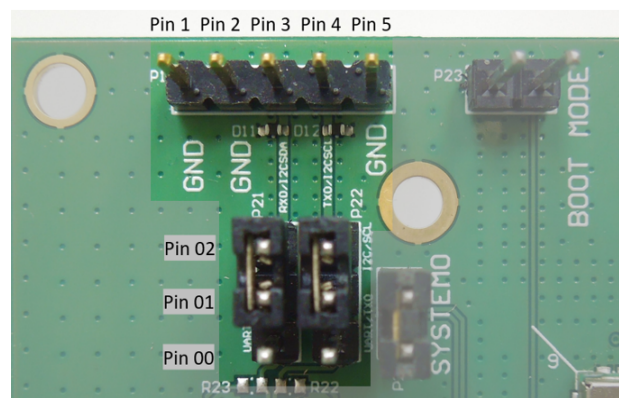


Figure 3-6: I2C Header

**Table 3-4: I2C Header Details**

Component	PCB Label	Description
5-pin header	P1	I2C signals; refer to <a href="#">Table 3-5</a> for details

**Table 3-5: I2C Header Pins**

Pin Number	Pin Name	Description
1	GND	Ground
2	GND	Ground
3	RX0 / I2CSDA	I2C serial data (in slave mode)
4	TX0 / I2CSCL	I2C serial clock (in slave mode)
5	GND	Ground

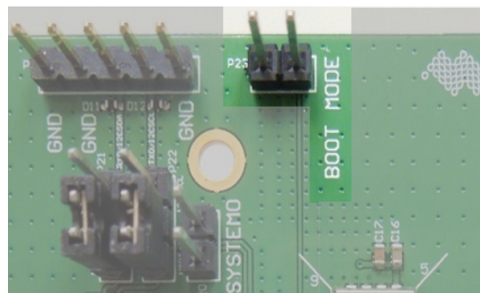
Pins 01 to 02 have to be configured by connecting them with jumpers.

See [Figure 3-4](#) and [Figure 3-5](#) on page 9 for jumper configuration consistent with SYSTEM0 settings.

Mismatching jumper connections will result in pin error after reboot; in this case, I2C features will not be enabled.

## BOOT Mode

The BOOT Mode header is used to place the module in Flash download mode to perform firmware updates.



*Figure 3-7: BOOT Mode Header*

**Table 3-6: BOOT Mode Details**

Component	PCB Label	Description
2-pin header	P23	Add a jumper to make the module ready for firmware upgrade

## 1PPS / INT

Connectivity to peripheral devices is supported via the 1PPS and INT (for I2C) header.

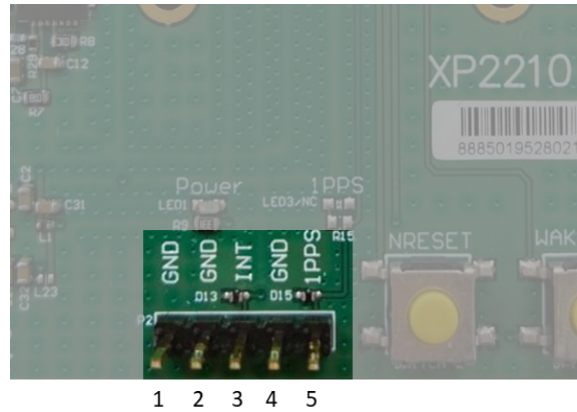


Figure 3-8: 1PPS / INT Header

Table 3-7: 1PPS / INT Details

Component	PCB Label	Description
5-pin header	P2	1PPS / INT header

Table 3-8: 1PPS / INT Header Pins

Pin Number	Pin Name	Description
1	GND	Ground
2	GND	Ground
3	INT	Interrupt pin for I2C application
4	GND	Ground
5	1PPS	1PPS time mark output

## WAKE UP

The WAKE UP pushbutton wakes the module up.



Figure 3-9: WAKE UP Button

**Table 3-9: WAKE UP Button Details**

Component	PCB Label	Description
Button	SWITCH 3	Pushing the WAKE UP button wakes the module up from sleep mode.

## NRESET

The NRESET pushbutton reboots the module.



Figure 3-10: NRESET Button

**Table 3-10: NRESET Button Details**

Component	PCB Label	Description
Button	SWITCH 2	Pushing the NRESET button reboots the module.

## Micro-B USB

The Micro-B USB connector provides for power and serial access from a host device, and interfaces to an on-board CP2102N IC which provides access to the module's UART interface.

When the Development Kit is powered ON:

- LED1 (Power) is lit,
- the host device can connect to the XP2210's console, and
- the module's UART access becomes accessible (default setting of 115200 Kbps baud rate and update rate of 1Hz).

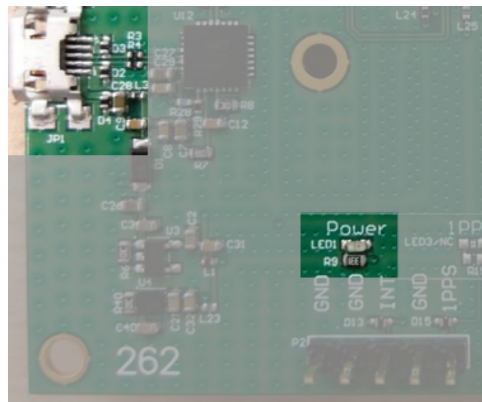


Figure 3-11: Micro-B USB Connector and Power LED

**Table 3-11: Micro-B USB Connector Details**

Component	PCB Label	Description
Micro-B USB connector	JP1	Connects the Development Kit to a host device and provides access to the module's UART interface

## >> 4: Software Usage

### System Requirements

- Operating System: Microsoft Windows 7, 8, and 10
- USB Driver: CP210x VCPInstaller.zip
  - For Windows 7, Windows 8 or Windows 8.1, use CP210xVCP driver v6.7 or the latest version (v6.7.5).
  - For Windows 10, use CP210xVCP driver v6.7.5; v10.1.1
- GUI Tool: GNSS Tool
- Microsoft .NET Framework 4.5
- Microsoft Visual C++ 2015 Redistributable Package (x86)

### USB Driver and GNSS Tool

Before setting up the connection between the module's UART port and the PC, you will need the Development Kit USB Driver (CP210x VCP) and GNSS Tool.exe to operate the Development Kit.

Please download and install the USB Driver (CP210x VCP) from <https://source.sierrawireless.com/resources/airprime/software/cp210x-windows-drivers>.

Please download the GNSS tool from [https://source.sierrawireless.com/resources/airprime/software/gnss\\_tool/](https://source.sierrawireless.com/resources/airprime/software/gnss_tool/).

---

**Important:** *Please check whether you have the correct USB driver before you proceed to the next step. The Development Kit will not function without the correct driver.*

---

## Installing the USB Driver

1. Double click **CP210x\_VCP\_Win.exe** to begin driver installation:

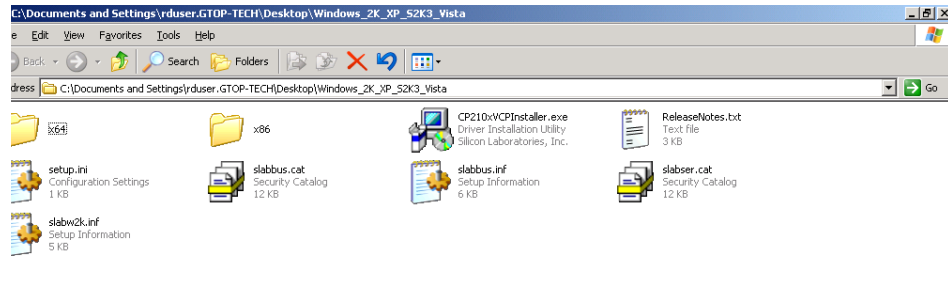


Figure 4-1: Driver Installation Folder

2. Click **Install**:

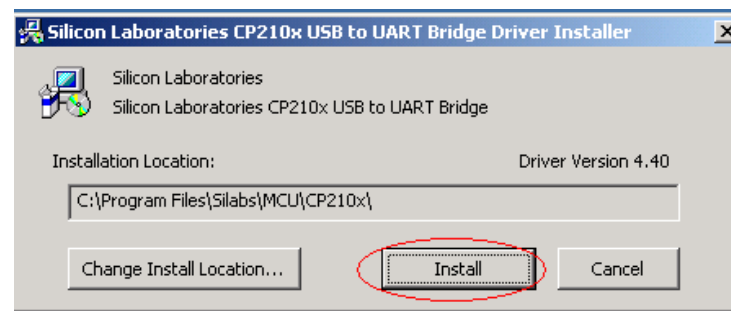


Figure 4-2: Starting the Installation Process

3. After the installation is complete, you may need to restart your computer. Please follow the instructions on screen to restart your computer.
4. After the computer has restarted, right click on **My Computer** and select **Manage**:

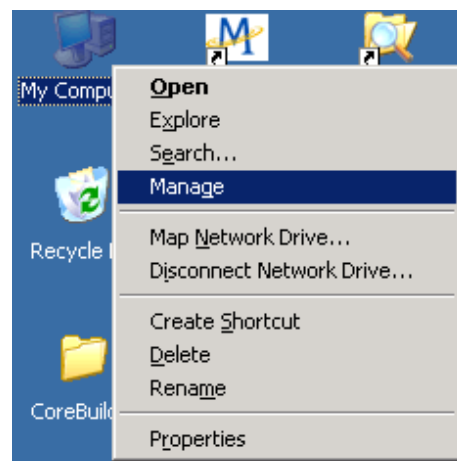


Figure 4-3: Selecting Manage

5. Left click **Device Manager** and select **Ports (COM & LPT)**. Check to see if a device named **Silicon Labs CP210x USB to UART Bridge (COM#)** is present. If so, the Development Kit is set up and ready for use.

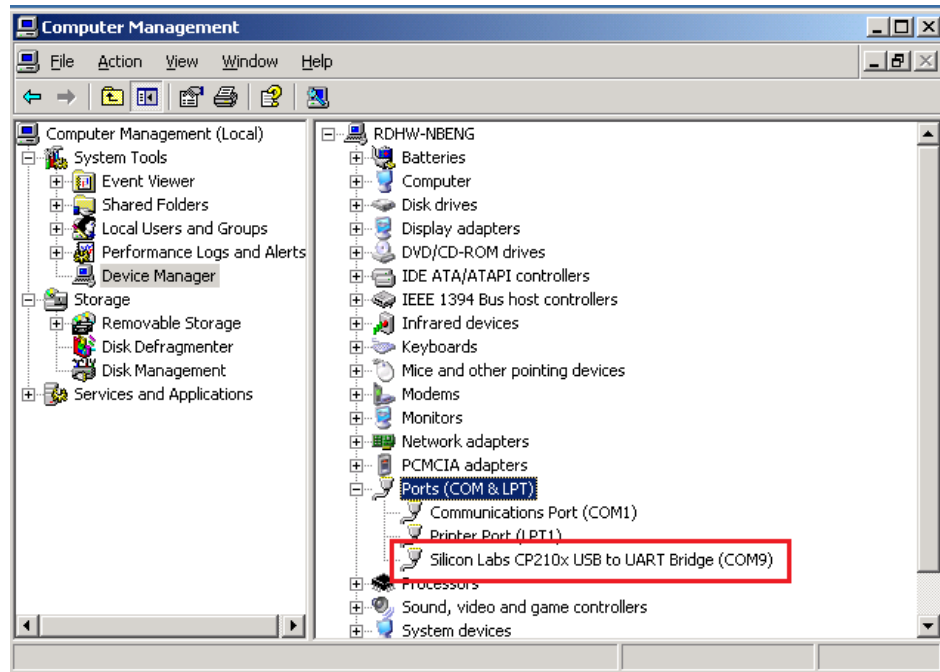


Figure 4-4: Accessing the Port Properties

“COM9” represents the virtual COM port number generated for the USB connection to the Development Kit. This generated COM port value must match the COM port value in the program setting for the application to establish proper communication with the Development Kit.

## Using GNSS Tool

Microsoft Framework 4.5 or higher is required before you launch the GNSS Tool software on your PC.

Double click **GNSSTool.exe** to start the application, the main screen of the program is shown below:

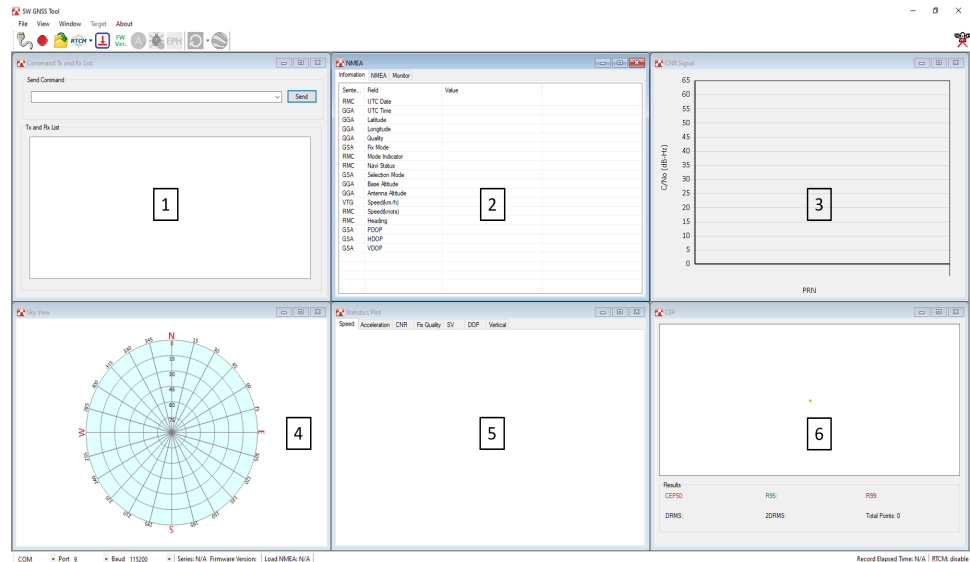


Figure 4-5: Main Program Screen

1. **Command Tx and Rx List:** clicking on this menu item will display the Command window.
2. **NMEA List:** clicking on this menu item will display a window with NMEA information.
3. **CNR Signal:** clicking on this menu item will display the CNR signal window.
4. **Sky View:** clicking on this menu item will display a window with a sky view of satellites.
5. **Statistics Plot:** clicking on this menu item will display the statistics plot window.
6. **CEP:** clicking on this menu item will display the CEP (Circular Error Probable) window, which can calculate the CEP in real-time or from a historical position.

After the Development Kit is connected with the PC, please choose the correct **<COM Port>** and **<Baud Rate>**.



*Figure 4-6: COM Port Dialog*

If you want more information about the GNSS Tool software, refer to the AirPrime GNSS Tool User Guide.

## 5: Troubleshooting

### Setup Troubleshooting

**Table 5-1: Troubleshooting Causes and Solutions**

Problem	Possible Cause	Solution
<b>Cannot find GNSS device</b>	USB was not set up properly	Check to see if the Development Kit was set up properly, and make sure that the device is receiving enough power through the USB cable (red LED should light up continuously).
<b>No NMEA data or GNSS signals</b>	<ol style="list-style-type: none"> <li>1. USB was not set up properly.</li> <li>2. COM port or baud rate value is incorrect.</li> </ol>	<ol style="list-style-type: none"> <li>1. Check to see if the USB connector to the PC or Development Kit is connected properly.</li> <li>2. Double check to see if the proper COM port and baud rate value are selected.</li> </ol>
<b>Poor GNSS Signal Reception</b>	<ol style="list-style-type: none"> <li>1. If it is used inside a vehicle, the anti-sunscreen film on the windshield may interfere and weaken the GNSS signal.</li> <li>2. The vehicle might be under some area with a dense overhead canopy such as a forest, buildings, tunnels, etc.</li> </ol>	For both problems, the user may connect an external active antenna to the Development Kit, and then place the antenna on top of the car's roof to improve signal reception.

---

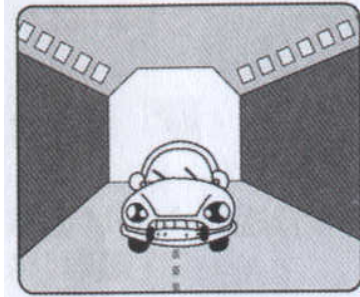
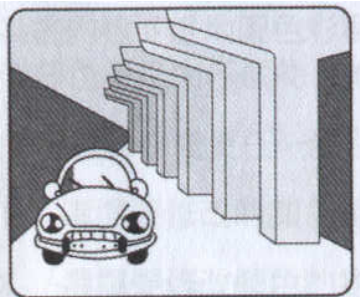
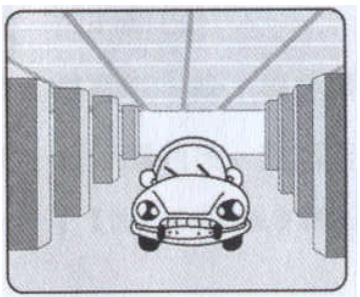
*Note: If these troubleshooting steps do not solve the problem, please contact us or send the module back to us for inspection.*

---

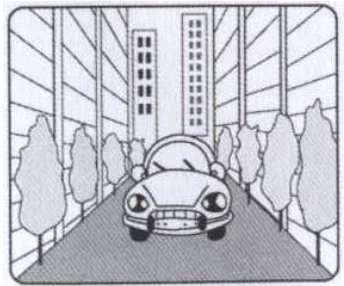
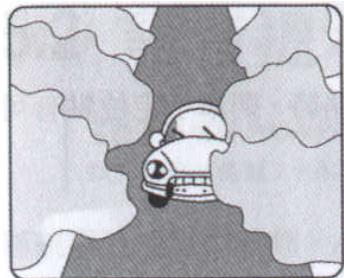
## Causes of Poor GNSS Signals

It is possible to have weak GNSS signal in the following situations:

**Table 5-2: Examples Where Poor GNSS Signals May Occur**

	Inside a tunnel, where the GNSS signal is blocked.
	Underneath infrastructure (e.g. a bridge), where the GNSS signal is blocked.
	Inside a building, where the GNSS signal is blocked.

**Table 5-2: Examples Where Poor GNSS Signals May Occur (Continued)**

	<p>Next to tall buildings, where the GNSS signal is weakened.</p>
	<p>Underneath forests or any other kinds of canopy where the GNSS signal is weakened.</p>

- If the Development Kit is used inside a car which has anti-sunlight films on the windshield and windows, the GNSS signal will be weakened severely, and may result in no GNSS reception.
- GPS satellites are the property of the United States Army. Sometimes they will tune-down accuracy for unknown reasons. In such cases, the GPS position may not be accurate.

## >> 6: References

Refer to the following documents for more information. Visit <http://source.sierrawireless.com> for the complete range of available documentation.

- AirPrime XP2210 Product Technical Specification  
Reference number: 41113676
- AirPrime GNSS Tool User Guide  
Reference number: 41111068