



Customer Release Note

Open AT[®] Firmware v7.2a

Reference: **WM_PGM_OASIS_CRN_005**

Revision: **001**

Date: **October 24, 2008**

Cellular Modem (AT) Firmware

Embedded Applications (C/Lua)

Integrated Development Environment

Real Time Multitasking OS

Embedded Plug-Ins



wavecom[®]

Smart wireless. Smart business.

Open AT[®] Firmware v7.2a Customer Release Note




Reference : **WM_PGM_OASIS_CRN_005**
Version **001**
Date : **October 24, 2008**

Preliminary

Document Information

Level	Date	History of the evolution	Writer
001	October 16, 2008	Creation	PCH

Trademarks

  , inSIM[®], "YOU MAKE IT, WE MAKE IT WIRELESS"[®], WAVECOM[®], Wireless Microprocessor[®], Wireless CPU[®], Open AT[®] and certain other trademarks and logos appearing on this document, are filed or registered trademarks of Wavecom S.A. in France and/or in other countries. All other company and/or product names mentioned may be filed or registered trademarks of their respective owners.

Copyright

This manual is copyrighted by WAVECOM with all rights reserved. No part of this manual may be reproduced, modified or disclosed to third parties in any form without the prior written permission of WAVECOM.

No Warranty/No Liability

This document is provided "as is". Wavecom makes no warranties of any kind, either expressed or implied, including any implied warranties of merchantability, fitness for a particular purpose, or noninfringement. The recipient of the documentation shall endorse all risks arising from its use. In no event shall Wavecom be liable for any incidental, direct, indirect, consequential, or punitive damages arising from the use or inadequacy of the documentation, even if Wavecom has been advised of the possibility of such damages and to the extent permitted by law.

Table of Contents

1	INTRODUCTION	5
1.1	Scope of this Document	5
1.2	Audience for this Document	5
1.3	Release Feature List	5
1.3.1	New Features List	5
1.4	Dedicated Wireless CPU® Versions for Specific Markets	5
1.4.1	New Product Introduction	5
1.4.2	Dedicated Version	5
1.4.3	Storage & Marking	6
1.4.4	Availability	6
1.4.5	Warning	6
1.4.6	Software Behavior	6
2	RELATED DOCUMENTS	7
3	ABBREVIATIONS AND DEFINITIONS.....	8
4	HARDWARE COMPATIBILITY	9
4.1	Wireless CPU® Compatibility	9
5	SOFTWARE RELEASE DESCRIPTION	10
5.1	Release Identification	10
5.2	Released Files & Download Processes	10
5.2.1	Download processes	10
5.2.2	Downgrade processes	15
5.3	Software Tools Version	16
6	SOFTWARE DESCRIPTION.....	17
6.1	Corrections Impacting Firmware Interface or Behavior	17
6.2	Other Interface Changes	21
6.2.1	New AT Commands	21
6.2.2	Updated AT Commands	22
6.2.3	Deprecated AT Commands	22
7	FEATURE DESCRIPTION	23
8	CERTIFICATION COMPLIANCE	24
8.1	GCF-CC & PTCRB	24
9	ADDITIONAL INFORMATION / RESTRICTIONS	25

Preliminary

1 Introduction

1.1 Scope of this Document

The scope of this document is the Open AT[®] Firmware v7.2a release description for Wireless CPU[®] series **Q2686, Q2687, Q2687 Classic, WMP50, WMP100, WMP120, WMP150, FSU & variants.**

Open AT[®] Firmware v7.2a is a new Firmware, originally based on the **7.2** version.

1.2 Audience for this Document

This Release note may be distributed to all direct and indirect customers and will be posted on the corporate web site under the Support\Private area.

1.3 Release Feature List

1.3.1 New Features List

Features list	Applicable for AT commands users through serial port	Applicable for Open AT [®] OS users	Alpha stage (unitary tested only)
None			

For more details on these features please refer to Chapter 7.

1.4 Dedicated Wireless CPU[®] Versions for Specific Markets

1.4.1 New Product Introduction

As per specific market requirements, additional "countries dedicated" version of Wireless CPU[®] has been launched

1.4.2 Dedicated Version

As these products are tailored for dedicated countries, they are locked not to work on any other network other than the selected country's available carriers. Obviously Wavecom will perform maintenance on these products in the same way as it is done on other products.

1.4.3 Storage & Marking

For countries-dedicated versions, in the Product Code file, the SW Configuration of this version includes the mention "CCx", with x depending on the dedicated country. This software configuration only appears on its pizza box. Special attention is required to manage the storage, as this software configuration is the only way to distinguish the product.

1.4.4 Availability

Software versions available on the Wavecom web site are only for not dedicated products.

In order to obtain a Software version for updating the products dedicated to specific countries, contact your Wavecom technical support.

1.4.5 Warning

Standard **v7.2a** software not tuned for dedicated countries must not be used on Wireless CPU[®]s that are dedicated to a specific country, as it is not compatible. In this case, the message **BAD SOFTWARE** is displayed (refer to document [1], the AT Command Interface Guide, for more information on this message).

This software conflict can be undone by re-downloading a compatible version.

1.4.6 Software Behavior

The use of Wireless CPU[®] for disallowed countries is forbidden. In this case, the message **"SIM NOT ALLOWED FOR THIS MODULE"** is sent, the Wireless CPU[®] resets, and AT SIM commands are then no longer possible.

The Wireless CPU[®] upgrade by using a specific country lock version is not reversible. Therefore, all Wireless CPU[®]s upgrade performed by using such a version will not be able to use previous software version. In this case, a message **"BAD SOFTWARE"** will be displayed.

2 Related Documents

[1]	Open AT[®] Firmware v7.2a AT Commands Manual	WM_DEV_OAT_UGD_079-005
[2]	Product Technical Specification Light for WMP150/WMP100	WM_DEV_WMP150_PTS_001-002
[3]	Product Technical Specification/Customer Design Guidelines for WMP150/WMP100	WM_DEV_WMP150_PTS_002-005
[4]	Product Technical Specification for Q2687	WA_ENG_Q2687_PTS_001-005
[5]	Customer Design Guidelines for Q2687	WA_DEV_Q2687_PTS_007-002
[6]	Product Technical Specification for Q2686	WM_PRJ_Q2686_PTS_001-008
[7]	Customer Design Guidelines for Q2686	WM_PRJ_Q2686_PTS_003-005
[8]	Open AT[®] OS v6.11 ADL User Guide	WM_DEV_OAT_UGD_080-004
[9]	Tutorial for Open AT[®] IDE v1.08	WM_DEV_OAT_UGD_044-006
[10]	Tools Manual for Open AT[®] IDE v1.08	WM_DEV_OAT_UGD_045-009
[11]	Plug and Play Wireless CPU[®] -- FASTRACK Supreme User Guide	WA_DEV_Fastrk_UGD_001-004

3 Abbreviations and Definitions

Abbreviation/Acronym	Description
FSU	Fastrack Supreme
SDK	Software Development Kit
UGD	User Guide
WM	Wavecom
WMP	Wireless Microprocessor
WPK	Wavecom Package

Preliminary

4 Hardware Compatibility

4.1 Wireless CPU[®] Compatibility

Firmware Version	Wireless CPU [®] compatibility list
7.2a/R72a	WMP100/WMP50/WMP150/WMP120
7.2a/R72a	Q2687 / Q2687 Classic
7.2a/R72a	Q2686
7.2a/R72a	FSU
7.2a/R72a	Variants (Q64/Q39/Q55)

Preliminary

5 Software Release Description

5.1 Release Identification

Wireless CPU [®] – WMP100/Q268x/FSU - Series	
Date of generation	21/10/2008 11:31
Software identification	R72a00gg.WMP100 32/8 Mbits
	R72a00gg.WMP100 32/16 Mbits
	R72a00gg.WMP100 64/16 Mbits
	R72a00gg.Q2686 32/8 Mbits
	R72a00gg.Q2687 32/8 Mbits
	R72a00gg.Q2686 64/16 Mbits
	R72a00gg.Q2687 64/16 Mbits
	R72a00gg.FSU001 32/8 Mbits
	R72a00gg.FSU002 32/8 Mbits
	R72a00gg.FSU003 32/8 Mbits
R72a00gg.FSU004 64/16 Mbits	
R72a00gg.FSU005 64/16 Mbits	
IMEISV	WMP100 0x14
	Q2686 0x25
	Q2687 0x25
	FSU 0x25
Checksum	0x85 09 85 84
Binary Size	2054540
Flash type	32/8 Mbits / 32/16 Mbits / 64/16 Mbits
Open AT [®] version	Open AT [®] Software Suite v2.12 / OS v6.11
Xmodem downloader	V08b0a
New Firmware based on release	V7.2

5.2 Released Files & Download Processes

This section describes the process to upgrade your current Wireless CPU[®] with Open AT[®] Firmware v7.2a.

NOTE: It is assumed that the former Open AT[®] Firmware v7.2 has been already installed on your Wireless CPU[®].

5.2.1 Download processes

Download processes are possible through DWLwin tool, 1K-Xmodem and DOTA2. But, download process through DWLwin is recommended to upgrade Wireless CPU[®] with Open AT[®] Firmware v7.2a because it is easier.

5.2.1.1 Download procedure with DWLwin

The Wireless CPU[®] can be upgraded thanks to the DWLWin tool according to the following procedure. The dongle usage is not required to execute this procedure if a software is already loaded into the flash, but the dongle usage is mandatory for a blank flash driven by Wireless Microprocessor[®].

- 1) Set DWLwin parameters:
 - a. Select the right WPK package to download:
 - i. R72a00-cus-wmp-01.wpk for WMP family
 - ii. R72a00-cus-q26-01.wpk for Q26/Fastrack family
 - b. Select erase "Objects"
 - c. Select erase "Open application"
 - d. For "Customization files":
 - i. Do NOT select "Erase Customization files" if you use a Wireless Microprocessor[®] with a blank flash (dongle required)
 - ii. Otherwise, select "Erase Customization files" (dongle not required)
- 2) Start the download
- 3) To the question : "Please select the Wireless CPU[®] type ?", select the right Wireless CPU[®] (if necessary, use ATi3 command to determine the accurate response)
- 4) In case of Wireless Microprocessor[®] with dongle usage, you will receive the following question : "Do you want to activate security features ?"
 - a. Answer "Yes" if your want to activate the security features or change their parameters. Refer to "Activation of security features" chapter
 - b. Answer "No" otherwise
- 5) To the question : "Do you want to resize A&D DOTA volume ?"
 - a. Answer "Yes" if you expect to use A&D zone. Refer to "A&D zone initialization" chapter
 - b. Answer "No" otherwise
- 6) To the question : "Do you want to customize the flash object area (ADL flash API) ?", answer "No"
- 7) To the question : "Do you want to download the firmware ?", answer "Yes"
- 8) In case of Wireless Microprocessor[®] without IMEI and with dongle usage, you will receive the following question: "Do you want to program the IMEI ?"
 - a. Answer "Yes" if you want to program a new IMEI. Refer to "IMEI programming" chapter
 - b. Answer "No" otherwise
- 9) In case of Wireless Microprocessor[®] with dongle usage, you will receive the following question: "Do you want to program the firmware's feature ?", answer "No"
- 10) The download is processed

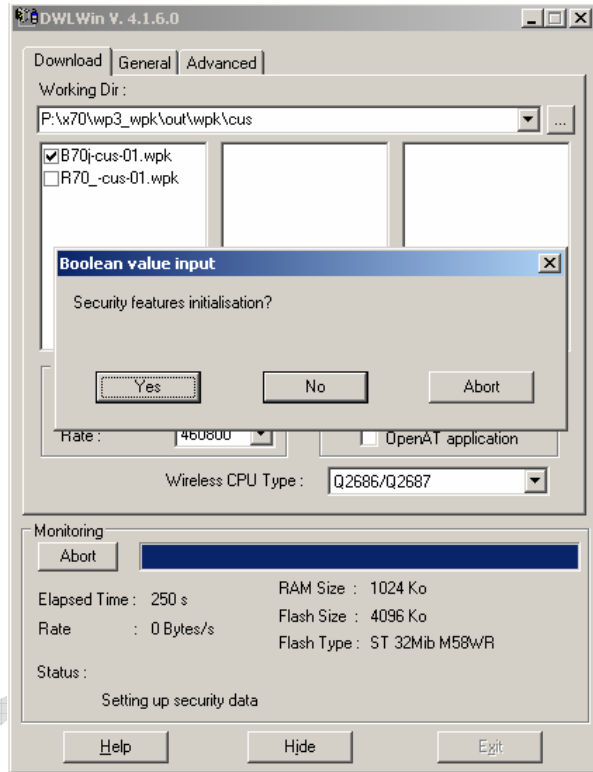
This procedure resets some configuration parameters (like GSM bands for example) which shall be manually reset thanks to classical AT or Open AT[®] APIs.
The package won't download the firmware if it's already in flash.

Reminder: Open AT[®] Application built with a version before Open AT[®] Software Suite v2.10 has to be rebuilt with Open AT[®] Software Suite v2.1x.

Activation of security features

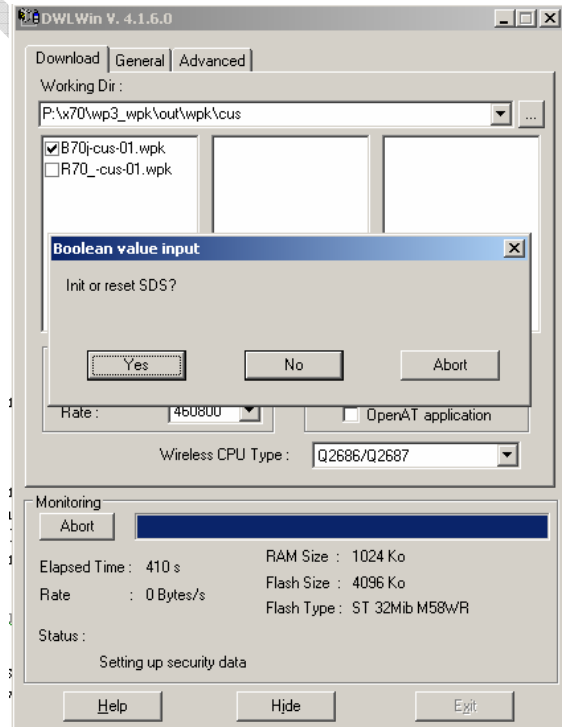
The package will ask for the Security feature initialization.

If you do not want to initialize this feature, clicking "No" allows you to bypass all actions related to Security Features

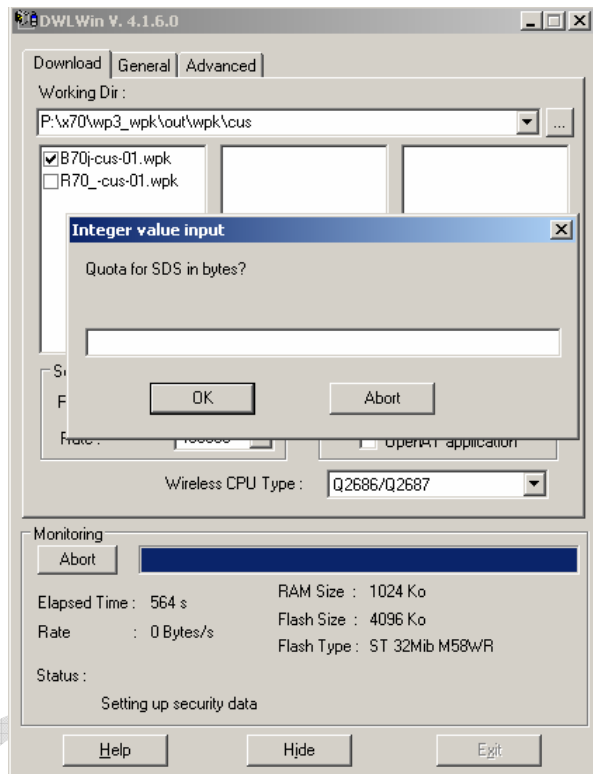


If you select "Yes" for Security features initialization, the package asks for Init / reset SDS.

If you do not want to initialize or reset the SDS (Security Data Storage), choose "No", otherwise click on "Yes" and SDS will be reset.

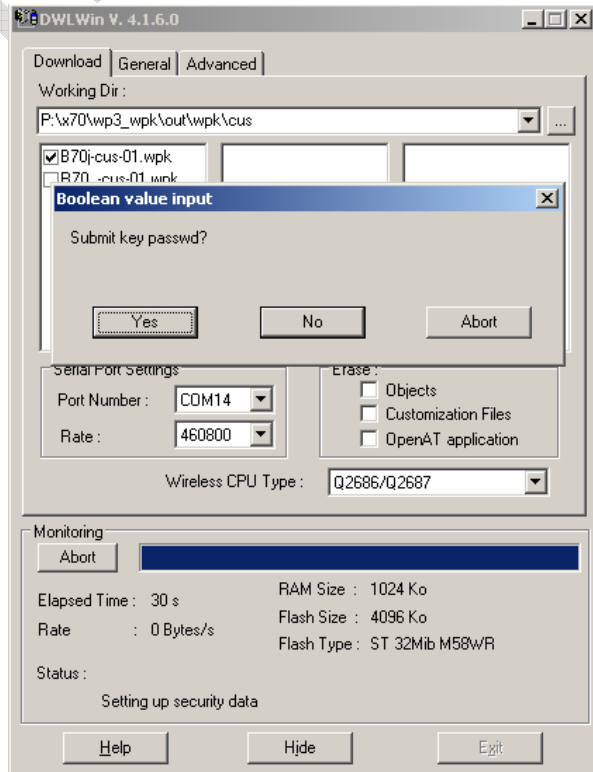


If you have chosen to reset SDS, then the package asks for "Quota for SDS in bytes" you want reserved.



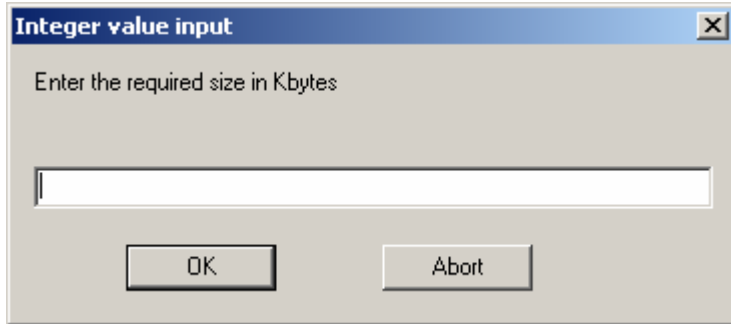
Then the package asks you to submit a key password (a password mechanism set up to prevent illegal modification of the public key).

If you select "Yes", the package asks for you to change the password or enter a new one.



A&D zone initialization

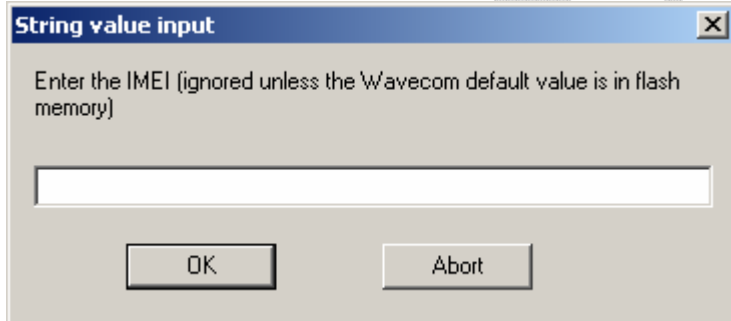
Then the package asks for the required size with the same format as the <A&Dsize> parameter in AT+WOPEN=6 command. See document [1] for more information.



Note that modifying the memory configuration using the AT+WOPEN=6 command can be a significantly long operation. This step can be performed faster through the automation interface (OLE/COM interface): set an integer extra option named "DOTA_VOLUME_SIZE" whose value should be the requested size in Kbytes. See document [2] for more information.

IMEI programming

The package asks you to enter the IMEI (15 digits).



CAUTION: The package can only overwrite the default IMEI value once. Another attempt for an overwrite will not generate an error message, but will not work.

5.2.1.2 Download procedure through X-modem

This procedure is not applicable for Wireless Microprocessor[®] with blank flash. The objects and DOTA data are not erased AND the size of the DOTA area and the size of the object areas remain the same.

1. Upgrade the bootloader:
 - a. Type "AT+WDWL", wait for the NACK characters
 - b. Send the porting downloader named dwl.dwl via the X-modem protocol.

2. Type "AT+CFUN=1" in order to take into account the new downloader.
3. Upgrade the Open AT[®] Firmware:
 - a. Type "AT+WDWL"
 - b. Wait for the NACK characters
 - c. Send the specific dwl upgrade file named R72a00_full_xxx.dwl (choose the right file according to the Wireless CPU[®]) via the 1K-Xmodem protocol.
 - d. Send the new application if needed.
4. Type "AT+CFUN=1".
5. The customer application has to be restarted (using AT+WOPEN=1) if necessary.

Reminder: Open AT[®] application built with a previous version before Open AT[®] Software Suite v2.10 has to be rebuilt with Open AT[®] Software Suite v2.1x.

Configuration Required for Download

In order to download the FW using the 1K-Xmodem protocol, the following configurations and conditions have to be set:

- Create an Hyper Terminal connection on COM port with following parameters:
 - *Bit/Second* **115200**
 - *Data Bit* **8**
 - *Parity* **None**
 - *Bit Stop* **1**
 - *Flow Control* **Hardware**
- A version of AT software must be already downloaded on the Wireless CPU[®].

5.2.1.3 Download procedure through DOTA2

Special care is required for DOTA2. The customer must ensure that there is enough space left. **DOTA2 can't be used with 32 Mbits flash.**

Warning: The "AT+WOPEN=6,<x>" command must be explicitly used to set DOTA area size for Q268x series, FSU series & Wireless Microprocessors[®] variants before proceeding with the upgrade.

It is recommended to first download the latest downloader (dwl.dwl) in the DOTA area and to install it.

Then download in DOTA area the Open AT[®] Firmware package and install it. The Open AT[®] Application can then be updated in the same way (or concatenated directly to the Open AT[®] Firmware).

5.2.2 Downgrade processes

Downgrade procedures are not available.

5.3 Software Tools Version

This section gives the last Wavecom tools versions.

S/W Tools Name	Version
Target Monitoring Tool (TMT)	2.9.2.0
TMT Workspace	B72r00gg.p521x_64k.wks
Dwlwin downloader	Dwlwin 4.1.6.9

Preliminary

6 Software Description

6.1 Corrections Impacting Firmware Interface or Behavior

This section lists all corrections or improvements integrated in Open AT[®] Firmware v7.2a as related to Firmware v7.2.

All these modifications can impact the interface or introduce behavior modifications comparing to the v7.2 and by extension, all versions with similar behavior (compared to the Release Note and the AT Commands User Interface Guide of your current version for more information about what has changed from your version).

Caution: In this case, items hereafter might not list exhaustively the possible interface breaks between your current version (if not v7.2) and this v7.2a. For more information, refer to release notes of the versions between your current version and version v7.2.

Items are sorted by Impacted Domain (alphabetical order), Impacted Sub Domain (alphabetical order), and then Severity (increasing).

Id	Description (What / When)	Impacted Domain	Impacted Sub Domain
ANO49389	Reset can occur when a call disconnection is performed while a handover procedure is on progress.	GSM	RR
CUS49525	When an Open AT [®] Application tries to write in FLASH, if an other task is scheduled which modifies the FLASH space memory, then <code>adl_flhWrite()</code> function may return <code>ADL_FLH_RET_ERR_MEM_FULL</code> or <code>ADL_FLH_RET_ERR_NO_ENOUGH_IDS</code> error	OTHER	OTHER
CUS49667	Packet PDCH Release not correctly managed during two phases access. This case leads in a GPRS blocking state.	GPRS	OTHER
ANO49979	DTMF detection is not available when the Wireless CPU [®] is not synchronized to the network (used in Audio Diagnosis mode)	(None)	(None)

Id	Description (What / When)	Impacted Domain	Impacted Sub Domain
CUS50008	Response of ATA command is not received when the ATA and call disconnection(ATH) command at the peer end are issued simultaneously after a successful call is made and hooked. The issue is reproducible when before receiving a call confirmation message from the network at the called end the call is disconnected from the calling end. Also the response to the next AT command includes the buffered response for ATA command which was not received.	AT	OTHER
ANO49255	Wireless CPU® registers to a wrong PLMN after recovering from No Service state (In case of manual registration)	AT	OTHER
ANO49789	When an Open AT® Application subscribes to a provisioned parameter using IDS services, when the server gets the provisioned value, callbacks for getting length and getting data are called twice. It should be better to call 2 times the callback for data length (in order to well allocate memory) and call only one time the callback to get data.	Embedded RDMS	RDMS
ANO50011	The Location Area Code (LAC) of the cell on which the Wireless CPU is camped on, is wrongly displayed when using the Radio Spectrum Monitoring channel interface for Open AT® Applications.	OTHER	OTHER
ANO50052	Using IDS services, if the IDS server tries to get the preferred operators list stored in the SIM using the provisioning mechanism, the WCPU can return a truncated list if at least one unknown operator code exists in this list. An unknown operator is an operator code which is not associated to a long and a short name in all memories storage for operator names (see +WOPN command for more details). The WCPU should return the whole list even if the operator name is unknown.	Embedded RDMS	RDMS
ANO49916	Activating +ILRR notifications (AT+ILRR=1), being in Autobaud mode (AT+IPR=0) and having a CSD call established (ATD... or ATA => CONNECT), then the +ILRR intermediate response does not notify upon the current UART speed : it reports Autobaud mode (+ILRR:0) whereas it should report the current speed (e.g. at 115200 Bauds/s +ILRR: 115200).	AT	OTHER

Id	Description (What / When)	Impacted Domain	Impacted Sub Domain
CUS49937	When an Open AT® Application closes all the physical ports, the WCPU doesn't restart at the next reboot.	AT	OTHER
ANO49965/ ANO49966	After a DOTA2 update, the customer application is not activated. The migration packages are not affected.	OTHER	OTHER
ANO48794	AT+CPIN command gives +CME ERROR : 3 instead of OK in case a Valid SIM is inserted again once the Network Lock is activated for a valid SIM (containing MCC-MNC in the ME list) using AT+WLCK command and the SIM is removed to replace it with invalid/incorrect/bad SIM.	SIM	OTHER
ANO48947 ANO50323	AT+COPS command returns 'ERROR' after AT+CPOL command is used to write to Preferred Operator list with the PLMNsel file being Read Only. Also, the PLMN list shows the list to be updated even if the PLMNsel file is not updated.	AT	OTHER
CUS50362	DOTA and IDS updates fail if a special volume configuration is set in the production bench (typically for Q268x with integrated flash). Downloader update can not be performed by 1K-XModem. A workaround consists in configuring again A&D volume from Open AT® Application	DWL	Other
ANO50118	If an unauthorized SIM has been inserted once, the WCPU is blocked in +CME ERROR: 515 error state after pin code is entered but network lock is activated for a network lock SIM. If an unauthorized SIM and then a valid SIM 1 have been inserted, the SIM status does not update after inserted a valid SIM 2. The SIM status kept in valid SIM 1 and can make a call.	AT	Other
DEV50051	When a RDMS context activation is asked during a RDMS context deactivation, it is not possible to activate this context anymore	Embedded RDMS	RDMS

Id	Description (What / When)	Impacted Domain	Impacted Sub Domain
CUS50298 CUS50482 CUS50505	When starting the WMP/WUP with low voltage (around 1.6V--1.8V), some behaviors can be seen : - BAD SOFTWARE messages. A simple reset is usually enough to revive the module - Open AT® Application that are not started, even if AT+WOPEN? response is +WOPEN: 1. AT+WOPEN=7 response is +WOPEN: 7,15	SYS	OTHER
CUS49803	When a GPRS session is opened using windows dialup, the server IP address is 0.0.0.0 if it wasn't received during the connection establishment. It was 192.168.111.111 in older version.	AT	OTHER
DEV49760	RTE stability enhancement	OTHER	OTHER
ANO44449	Remote SIM is not accessible after OSA subscription is done.	SIM	OTHER
CUS50421	With OSA application the WMP100 resets if the SIM is absent from the rack.	SIM	OTHER
NEW50210	RIL LTK testing is not getting passed.	AT	OTHER
CUS50359	The Wireless CPU will be able to register to the network when using SIM cards with missing EFad file. The Wireless CPU will use a default value for MS Operation Mode parameter indicating it is configured for nominal mode.	GSM	PLMN_SEL
ANO50250 ANO50251	IDS Server interface display of monitored value is incorrect	Embedded RDMS	RDMS
ANO50342	On WMP50, when the IDS server gets the embedded Firmware version, a useless space is returned at the data end. This space should not be returned by the WCPU.	Embedded RDMS	RDMS
ANO49504	When trying to connect to the server with a specific SIM card (Smartone-Vodafone), the network seems to send some cookies, the connection to the IDS server failed. In this case, we should try to connect again.	Embedded RDMS	RDMS
ANO50537	When a generic alert is done and an update job is present at this moment on the IDS server, the job will be executed. After the download and before the call of the update agent, a reset occurs, the patch is not installed. The job should be well executed.	Embedded RDMS	RDMS

Id	Description (What / When)	Impacted Domain	Impacted Sub Domain
ANO50422	When the data sending into a generic alert are too long, the wbxml string is badly formatted	Embedded RDMS	RDMS
ANO50714	If the socket is closed during a session, the session is failed, but the device is supposed to re-opened the socket and finished the session	Embedded RDMS	RDMS
ANO50793	A valid signature can be used to execute any signed command, but it shouldn't: each signed command has its own signature.	Embedded RDMS	RDMS
ANO50857	Using IDS services, if the package install is automatic (default behavior and see +WDSC command) and if the battery is removed between the package download end and before the install, the install won't be launch at the next start up. Because the install is in automatic mode, the install should be launched at the next start up.	Embedded RDMS	RDMS
ANO47737	Does not receive +CMT unsolicited response when Open AT® Application is activated and <MT> parameter of CNMI command is configured to value 2.	AT	SMS
CUS49914	TMT always displays incorrect backtraces when a fatal error or an exception occurs or replayed from flash memory.	OTHER	OTHER

6.2 Other Interface Changes

Changes have been performed on the following commands. Please refer to document [1] *AT Commands Interface Guide* for more information.

6.2.1 New AT Commands

This section lists the commands that have been added in the Open AT® Firmware v7.2. For more information, refer to the command description in document [1].

Command	Comment
None	

6.2.2 Updated AT Commands

This section lists the commands that have been modified in the Open AT[®] Firmware v7.2a. For more information, refer to the command description in document [1].

Command	Comment
AT+WIOM, AT+WIOR, AT+WIOW	GPIO44 does not exist any longer on Q268x (till FW7.2). It has been renamed as GPIO0.

6.2.3 Deprecated AT Commands

This section lists the commands that are no more available in the Open AT[®] Firmware v7.2a.

Command	Comment
None.	

Preliminary

7 Feature Description

This section normally lists the features added to Open AT[®] Software Suite v2.12 Open AT[®] Firmware v7.2a.

No new features have been added to this particular release.

Preliminary

8 Certification Compliance

8.1 GCF-CC & PTCRB

The following table summarizes the certifications passed for this software version.

	GCF-CC	NAPRD.03
WMP100	v3.30.1	v4.1
WMP150	v3.30.1	v4.1
WMP120	v3.30.1	v4.1
WMP50	v3.30.1	v4.1
Q2687	v3.30.1	v4.1
Q2687 Classic	v3.30.1	v4.1
Q2686	v3.30.1	N/A

9 Additional Information / Restrictions

This section lists additional information or restrictions that must be taken into account regarding the Open AT® Firmware v7.2a.

Id	Description (What / When)	Impacted Domain	Impacted Sub Domain
ANO49559	Using AT+W32K=1,0 and AT+CMUX AT commands to authorize Slow idle mode on enabled CMUX com port and ignoring DSR state, the WCPU does not enter low power mode.	DEVICE	MUX
ANO49316	When the A&D DOTA volume is resized through the WPK package download options, too large volume sizes incorrectly raise no download error if there's no application installed in flash memory.	(None)	(None)
ANO49857	Wireless CPU sends a NO CARRIER indication instead of OK response in case GPRS session is terminated by DTR drop.	GPRS	OTHER
ANO49719	Even if the Device Services are in prohibited state (see +WDSG command), if the R72a firmware was downloaded in the WCPU using the customer or production WPK, the Device Services flash volume is allocated (one 64kB sector for a 32Mb flash and four 64kB sectors for a greater capacity flash). Then, AT+WOPEN=6 command sets and returns the size of DOTA+DS volume and not only DOTA one. This restriction does not happen if the Wireless Module has been upgraded by 1K-XModem procedure (by migration downloader).	(None)	(None)
ANO48617	If a user send or write the SMS with DCS as default GSM and store it in ME memory, then the SMS data when read is not displayed correctly. The bytes in the user data field got changed. This problem is not reproducible when SM memory is used.	AT	SMS
CUS49537	ADL software watchdog timer is inaccurate	SYS	OTHER
CUS47098	After subscribing and unsubscribing FCM on GSM data flow, it is impossible to subscribe to GSM data flow again. Hence, it is not possible to do 2 CSD calls with Open AT® Application.	DATA	OTHER

Id	Description (What / When)	Impacted Domain	Impacted Sub Domain
ANO49711	AT+CFUN=1 may not return OK.	DEVICE	V24
CUS50339	When PDA suspend, the MUX driver asks module to enter slow idle mode but module does not response (or delayed) to that command (the module should already in slow idle mode).	DEVICE	CMUX
ANO41927	When PDA wake up MUX cannot wake the module. A command is sent and an unsolicited AT response (+CREG: 2) is returned before the OK response. Normally the unsolicited response have to be returned after.	AT	OTHER
CUS49475	When using the command +CPBW, the value of TON/NPI only allows 145 and 129. We need to support range from 128 to 255. 129 is used for "unknown" but not "national number". The actual value of "national number" is 161.	AT	PHONEBOOK
DEV49774	Attempting to open the USB serial port (UART3) in direct mode systematically generates a target reset	DEVICE	V24
CUS50830	When an error occurs during an I2C transfer many times the Wireless CPU® can reset	DEVICE	IOB
DEV50730	DTMF TX decoding and GSM communication can not be used simultaneously	HWL	AUDIO
DEV50720	Depending on memory alignment some devices can fail to open	DEVICE	OTHER
ANO49559	Using AT+W32K=1,0 and AT+CMUX commands to authorize Slow idle mode on enabled CMUX com port and ignoring DSR state, the WCPU does not enter low power mode.	AT DEVICE	MUX

Id	Description (What / When)	Impacted Domain	Impacted Sub Domain
ANO41928	When ME phonebook is full and SIM phonebook has 127 entries, module resets immediately after entering the PIN code.	AT	PHONEBOOK
CUS41086	When AT commands sequence (combination of multiple and single commands) is sent quickly from external application, the response is not received in proper order.	AT	OTHER
CUS41816	When an application uses the call service, it has no way to filter any ATH or ATA commands coming from the external application.	OTHER	OTHER
CUS47648	An unexpected warning occurs (cannot find entry symbol) when linking a GCC application based on OS V6 or higher.	OTHER	OTHER
CUS50958	The behavior of COPS command and the responses sent by the command AT+CCED does not match each other in case the SIM is removed (emergency mode).	GSM	PLMN_SEL
CUS41833	Unexpected unsolicited +CREG & +CGREG events are sent by the Wireless Microprocessor ® when an embedded application is running and the AT&W command is used.	AT	OTHER
ANO49273 ANO48769	Incomplete resilience of the AD volume recompaction process to unattended resets or power losses.	FLASH	DOTA
CUS41843	Service SIM of ADL is not in a good state when the AT+CPIN=XXXX commands is sent by the external application too quickly. A workaround is to check the PIN status like ADL (AT+CPIN?), when +SIM PIN is received wait for 10 second in order to let ADL subscribe to SIM event and then verify the PIN code.	OTHER	OTHER
CUS47870	When attempting to use simultaneously CS2 & ADD25 signals (which are multiplexed on the same pin) no error is given to the ADL application	OTHER	OTHER
CUS50000	When some ADL functions are called in Open Uart callback functions, then a WCPU reset occurs. ADL_RET_ERR_SERVICE_LOCKED error code should be returned	OTHER	OTHER

Id	Description (What / When)	Impacted Domain	Impacted Sub Domain
ANO51160	If ./Wavecom/Monitoring/Config/Intervaltime is set to 0, the Wireless CPU® resets in loop at startup	Embedded RDMS	RDMS

Preliminary

WAVECOM S.A. : 3 esplanade du Foncet - 92442 Issy-les-Moulineaux - France - Tel: +33 1 46 29 08 00 - Fax: +33 1 46 29 08 08
Wavecom, Inc: 430 Davis Drive, Suite 300 Research Triangle Park, North Carolina, USA - Tel: +1 919 237 4000 - Fax: +1 919 237 4140
WAVECOM Asia-Pacific: Unit 201-207, 2nd Floor, Bio-Informatics Centre No. 2 Science Park West Avenue, Hong Kong Science Park,
Shatin, New Territories, Hong Kong (PRC) - Tel: +852-2824 0254 - Fax: +852-2824 0255

[\[Online contact details, GPS and maps\]](#)

wavecom 
Smart wireless. Smart business.