



AceManager Template

Application Note

2170045
Rev 1.0

»» Templates: How to Create and Apply a AceManager Template

If you have a modem configuration that works well for your needs, using AceManager, you can save that modem's configuration as a template and then apply it to other Sierra Wireless AirLink modems (generally of the same type).

- A fleet of PinPoint line modems installed in vehicles
- Several Raven line modems installed in RTUs in various locations
- Several Raven Xs installed with surveillance cameras

ALEOS

The Sierra Wireless AirLink PinPoint and Raven modem lines are powered by ALEOS technology of Sierra Wireless AirLink Solutions – the long standing industry benchmark for reliable and feature-rich embedded intelligence. With extensive capabilities like remote monitoring and configuration, packet-level diagnostics and over-the-air firmware updates, ALEOS simplifies installation, operation, and maintenance of any solution. ALEOS provides the “always-on” and “always-aware” connection management required for today's mission-critical applications.



AirLink Embedded Operating System

Caution: *Because the AirLink Redwing modem does not have ALEOS, AceNet and AceManager cannot be used with a Redwing modem.*

Before You Start

Note: These directions assume you already have an account with a cellular provider and have activated your AirLink modem(s) with that provider.

Note: If you still need to activate your modem(s), you can use the Setup Wizard for your cellular provider which you can obtain from the Sierra Wireless website: <http://www.sierrawireless.com/support/>.

Software Required

- **AceManager** - Graphical interface for configuring your AirLink modems. You can download the latest version of AceManager from the Sierra Wireless AirLink Solutions website: <http://www.sierrawireless.com>. A default installation of this utility is assumed later in these directions.

Software Recommended

- **AceNet** - Multiple modem configuration and monitoring utility for AirLink modems. With AceNet, you can save a working configuration in AceManager and then load it into several modems concurrently saving time and ensuring all the modems are configured the same. AceNet is available for separate purchase from your Sierra Wireless AirLink Solutions representative. A default installation of this utility is assumed later in these directions.
- **AceView** - Status and connection monitor for your AirLink modems. You can download the latest version of AceView from the Sierra Wireless AirLink Solutions website: <http://www.sierrawireless.com>.

Creating the Template with AceManager

1. Configure the “master” modem
 - a. Start AceManager: *Start > All Programs > AirLink Communications > AceManager*. Connect to the modem

using a direct connection (PPP or Ethernet) or remotely (TCP, UDP, or SMS), as applicable.

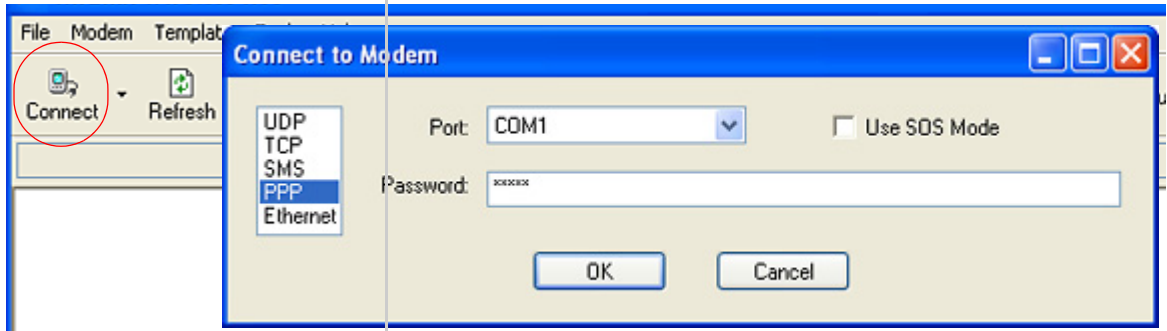


Figure 1: AceManager: Connect

Go through the AceManager Groups and configure the modem according to your requirements unless it is already configured and operational.

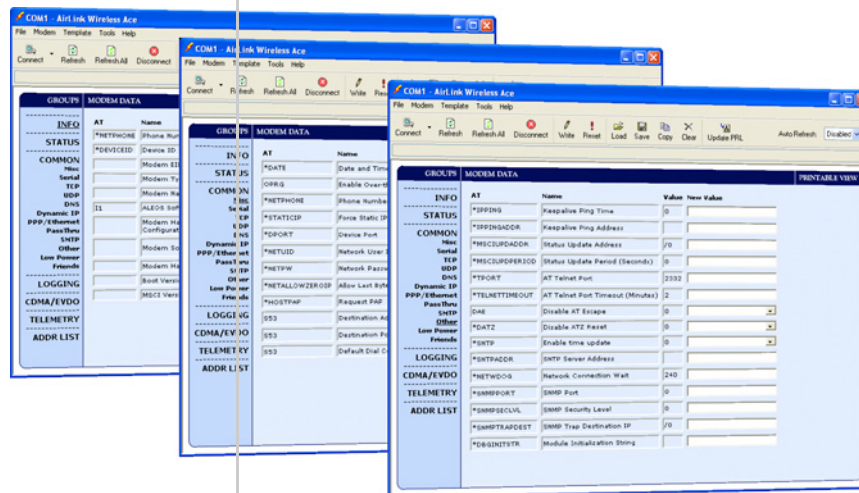


Figure 2: AceManager Groups

Tip: The AceManager user guide and the Modem user guide has information on all the parameters and how they affect the modem.

Caution: The commands in the **Logging** group are intended for diagnostic purposes only. Extensive use of the modem logging features can cause degraded modem performance.

2. Copy the settings to the New Value column

When you have the configuration for the modem that you require, you can begin preparing the template. Click the **Copy** button on the tool bar to transfer all the configured settings to the **New Value** column.

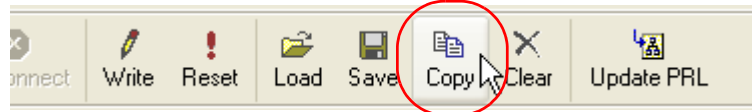


Figure 3: AceManager: Copy button

GROUPS	MODEM DATA			PRINTABLE VIEW
INFO	AT	Name	Value	New Value
STATUS	*IPPING	Keepalive Ping Time	15	15
COMMON	*IPPINGADDR	Keepalive Ping Address	216.228.27.29	216.228.27.29
	*MSCIUPDADDR	Status Update Address	/0	/0
	*MSCIUPDPERIOD	Status Update Period (Seconds)	0	0
	*TPORT	AT Telnet Port	2332	2332
	*TELNETTIMEOUT	AT Telnet Port Timeout (Minutes)	2	2
Dynamic IP	DAE	Disable AT Escape	0	0-OFF
PPP/Ethernet	*DATZ	Disable ATZ Reset	0	0-OFF
PassThru	*SNTP	Enable time update	0	0-OFF
SMTP	*SNTPADDR	SNTP Server Address		
Other	*NETWDOG	Network Connection Wait	240	240
Low Power	*SNMPPORT	SNMP Port	0	0
Friends				
LOGGING				
PINPOINT				
CDMA/EVDO				

3. AceManager: Copied to New Remove modem specific values

Some of the configuration settings are specific to individual modems. You do not want to have those settings in your saved template otherwise the modems you configure with the template could cease to work with the cellular or local network.

Delete these New Values

- Cellular Technology specific settings

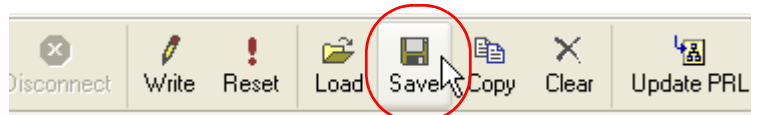
Verify these New Values are applicable to a general modem:

- *HOSTPRIVIP

- *HOSTPEERIP
 - *HOSTUID
 - *HOSTPW
4. Save the template

a. Click the **Save** button on the toolbar.

AceManager: Save button



b. Type in a file name that is descriptive of the template (so you can find it easily later) and save it to a location on your computer.

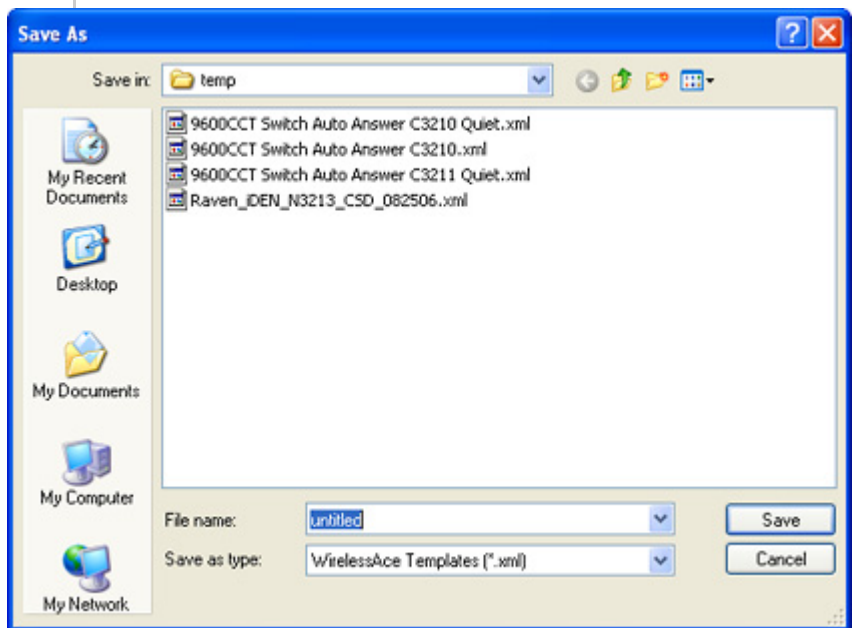


Figure 4: AceManager : Save the template

Applying a Template to one modem with AceManager

You can use a template you created yourself, using the steps above, or a template provided by your SierraWireless representative or someone in your company who has set up a modem template. The template you wish to apply must be saved to your hard drive.

1. Connect to the modem
 - a. Unless you still have AceManager open from the previous section, open AceManager: *Start > All Programs > AirLink Communications > AceManager*.
 - b. Connect to the modem using a direct connection (PPP, Ethernet, TCP, or UDP) or remotely (TCP, UDP, or SMS), as applicable.

Note: If you are connecting to the modem remotely, transferring the configuration to the modem could incur data transfer or connection charges.

2. Load the template
 - a. Click on the Load button on the toolbar.

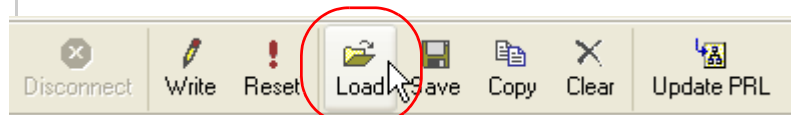


Figure 5: AceManager: Load button

- b. Select the template you have saved (you may need to change folders if you saved it to a different location).

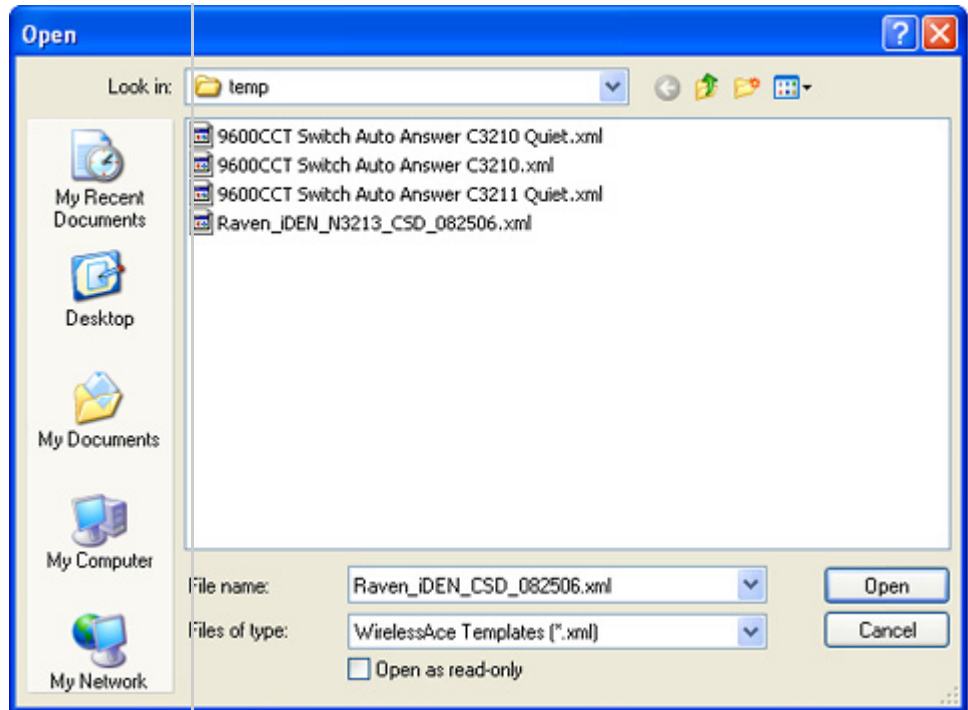


Figure 6: AceManager : Select a saved template

3. Verify the configuration settings

After you load the template, it's best to go back over the AceManager groups to make sure all the settings are what you require.

4. Write the new configuration to the modem

- a. Click the Write button on the toolbar to write the configuration to the modem.
- b. Wait for the "Write Successful" message.



Figure 7: AceManager : Bouton Write button

5. Reset the modem

Many of the configuration settings will not take effect until the modem has been reset.

- If you are connected to the modem locally, you can use the reset button on the front of the modem to reset.

Press the modem Reset button on the front of the modem. Wait until the modem **REG** indicator is lit and wait approximately 2 minutes to make sure all parameters are written and the modem has once again registered on the network.



Figure 8: Reset Button

- If you are connected remotely, use the Reset button on the AceManager toolbar.

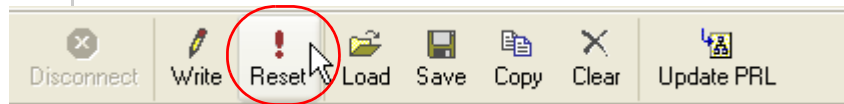


Figure 9: AceManager : Reset button

Applying a Template to several modems at the same time with AceNet

Open AceNet: *Start > All Programs > AirLink Communications > AceNet > AceNet.*

1. Select modems to configure with the template
 - a. Connect to the modem(s) you wish to configure with the template using a direct connection or remotely with TCP, UDP, or SMS (as applicable). If you already have an ACN file for your modems, you should be able to open that file with AceNet, but you will still need to make sure you are connected to the applicable modem(s).

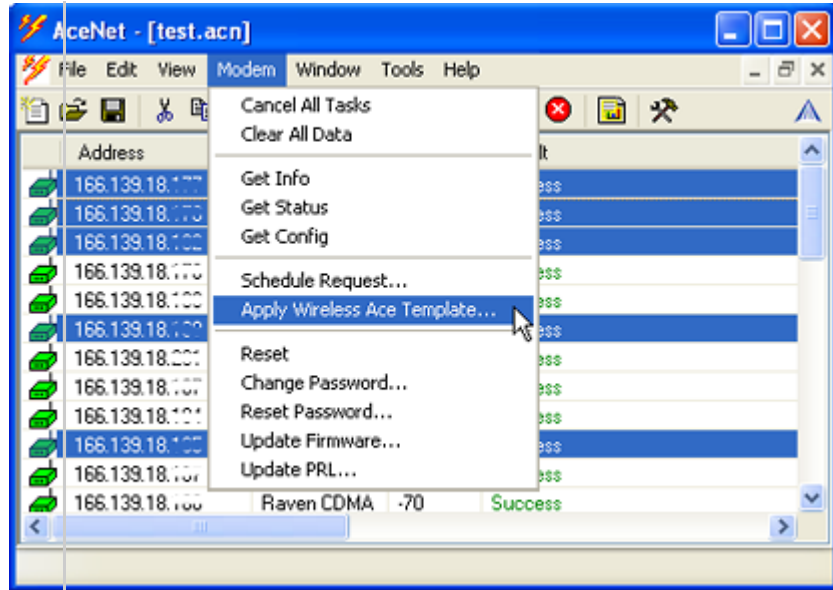


Figure 11: AceNet : Apply Template

- b. Set the **Retry Interval** and check if you want to have the modems **Reset** when the template has been applied.

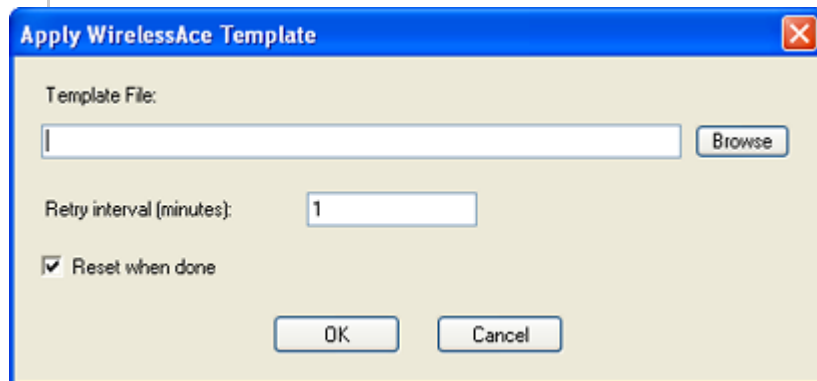


Figure 12: AceNet : Apply Template - options

- c. Either type in the Template file name, or click browse and select the template file you want to apply (you may need to change folders).

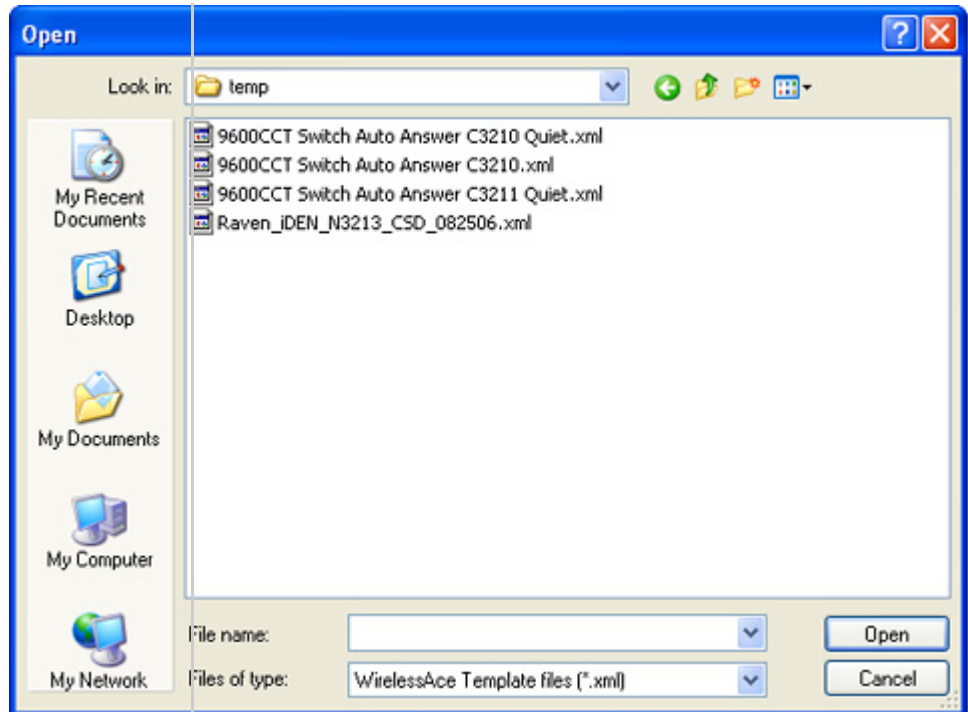


Figure 13: AceNet: Select Template

- d. When you have the appropriate file selected, click OK.

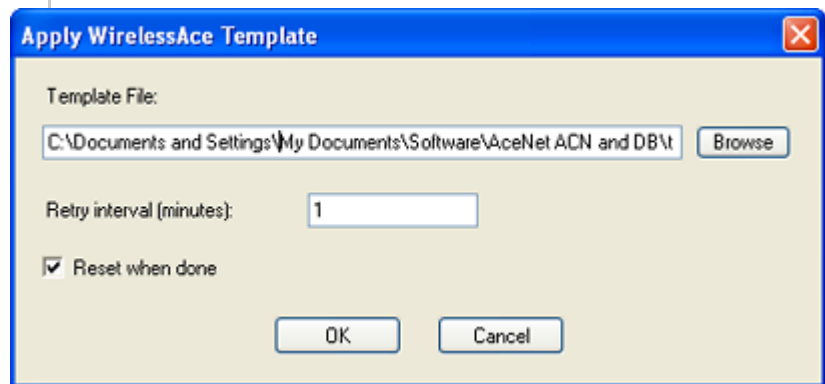
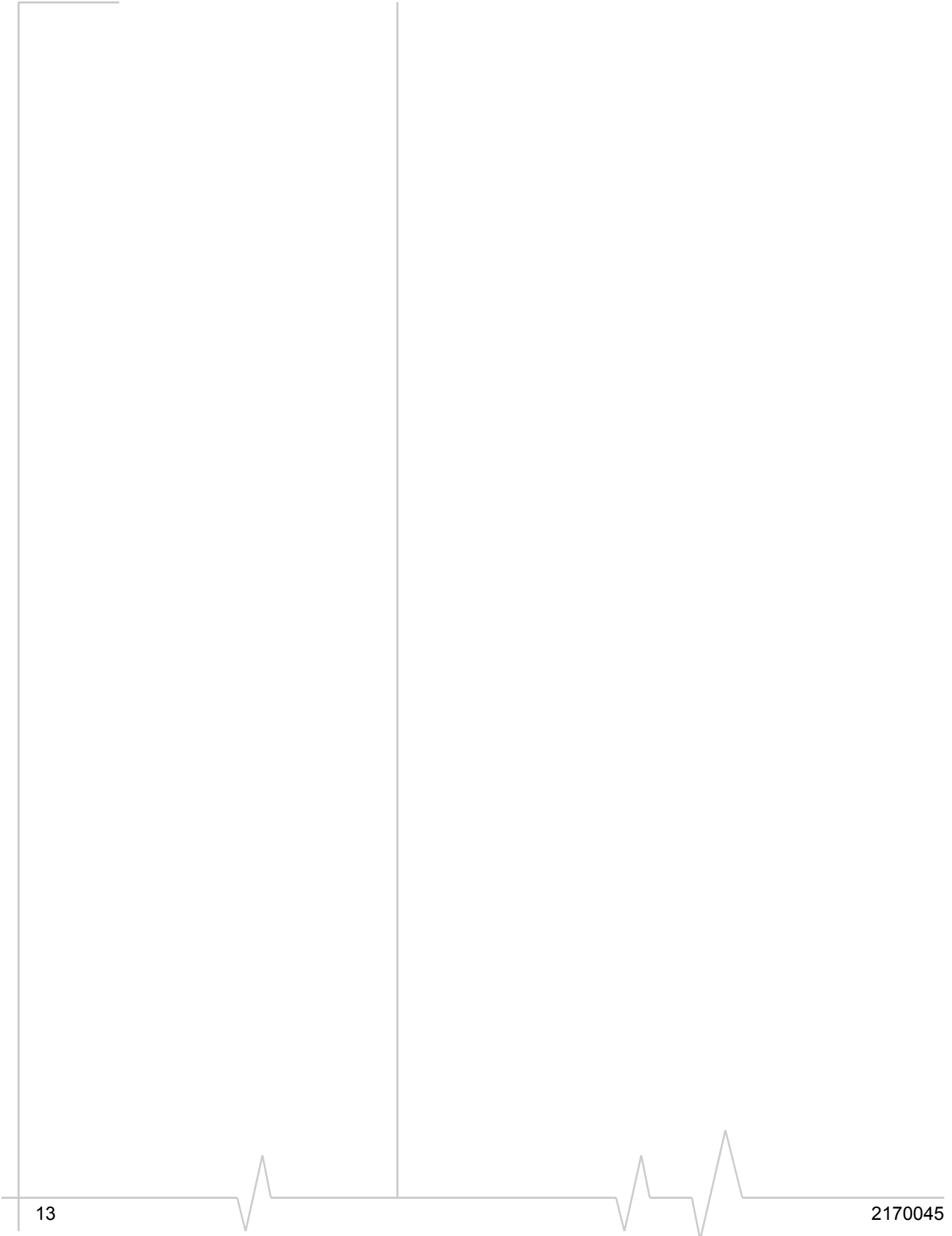


Figure 14: AceNet : Template Selected

AceNet will send the template to the modem(s) and apply the changes.



Important Notice

Due to the nature of wireless communications, transmission and reception of data can never be guaranteed. Data may be delayed, corrupted (i.e., have errors) or be totally lost. Although significant delays or losses of data are rare when wireless devices such as the Sierra Wireless modem are used in a normal manner with a well-constructed network, the Sierra Wireless modem should not be used in situations where failure to transmit or receive data could result in damage of any kind to the user or any other party, including but not limited to personal injury, death, or loss of property. Sierra Wireless accepts no responsibility for damages of any kind resulting from delays or errors in data transmitted or received using the Sierra Wireless modem, or for failure of the Sierra Wireless modem to transmit or receive such data.

Safety and Hazards

Do not operate the Sierra Wireless modem in areas where blasting is in progress, where explosive atmospheres may be present, near medical equipment, near life support equipment, or any equipment which may be susceptible to any form of radio interference. In such areas, the Sierra Wireless modem **MUST BE POWERED OFF**. The Sierra Wireless modem can transmit signals that could interfere with this equipment.

Do not operate the Sierra Wireless modem in any aircraft, whether the aircraft is on the ground or in flight. In aircraft, the Sierra Wireless modem **MUST BE POWERED OFF**. When operating, the Sierra Wireless modem can transmit signals that could interfere with various onboard systems.

Note: Some airlines may permit the use of cellular phones while the aircraft is on the ground and the door is open. Sierra Wireless modems may be used at this time.

The driver or operator of any vehicle should not operate the Sierra Wireless modem while in control of a vehicle. Doing so will detract from the driver or operator's control and operation of that vehicle. In some states and provinces, operating such communications devices while in control of a vehicle is an offense.

Limitation of Liability

The information in this manual is subject to change without notice and does not represent a commitment on the part of Sierra Wireless. SIERRA WIRELESS AND ITS AFFILIATES SPECIFICALLY DISCLAIM LIABILITY FOR ANY AND ALL DIRECT, INDIRECT, SPECIAL, GENERAL, INCIDENTAL, CONSEQUENTIAL, PUNITIVE OR EXEMPLARY DAMAGES INCLUDING, BUT NOT LIMITED TO, LOSS OF PROFITS OR REVENUE OR ANTICIPATED PROFITS OR REVENUE ARISING OUT OF THE USE OR INABILITY TO USE ANY SIERRA WIRELESS PRODUCT, EVEN IF SIERRA WIRELESS AND/OR ITS AFFILIATES HAS BEEN ADVISED OF THE POSSIBILITY OF SUCH DAMAGES OR THEY ARE FORESEEABLE OR FOR CLAIMS BY ANY THIRD PARTY.

Notwithstanding the foregoing, in no event shall Sierra Wireless and/or its affiliates aggregate liability arising under or in connection with the Sierra Wireless product, regardless of the number of events, occurrences, or claims giving rise to liability, be in excess of the price paid by the purchaser for the Sierra Wireless product.

Patents

This product may contain technology developed by or for Sierra Wireless Inc. This product includes technology licensed from QUALCOMM® 3G. This product is manufactured or sold by Sierra Wireless Inc. or its affiliates under one or more patents licensed from InterDigital Group.

Copyright

© 2011 Sierra Wireless. All rights reserved.

Trademarks

AirCard® and “Heart of the Wireless Machine®” are registered trademarks of Sierra Wireless. Watcher® is a trademark of Sierra Wireless, registered in the European Community.

Sierra Wireless, the Sierra Wireless logo, the red wave design, and the red-tipped antenna are trademarks of Sierra Wireless.

“AirLink,” “ALEOS,” and “AceWare” are trademarks of Sierra Wireless.

Windows® is a registered trademark of Microsoft Corporation.

QUALCOMM® is a registered trademark of QUALCOMM Incorporated. Used under license.

Other trademarks are the property of the respective owners.

Contact Information

Support Desk:	Phone:	1-877-231-1144
	Hours:	5:00 AM to 5:00 PM Pacific Time, Monday to Friday, except US Holidays
	E-mail:	support@sierrawireless.com
Sales Desk:	Phone:	1-510-624-4200 1-604-232-1488
	Hours:	8:00 AM to 5:00 PM Pacific Time
	E-mail:	MobileandM2Msales@sierrawireless.com
Post:	Sierra Wireless America 39677 Eureka Drive Newark, CA USA 94560 Sierra Wireless 13811 Wireless Way Richmond, BC Canada V6V 3A4	
Fax:	1-510-624-4299 1-604-231-1109	
Web:	www.sierrawireless.com	

Consult our website for up-to-date product descriptions, documentation, application notes, firmware upgrades, troubleshooting tips, and press releases:

www.sierrawireless.com

