



Adwl-Light Downloader User Guide

WISMO Wireless Standard MOdem

WA_DEV_WISMO_UGD_005
002
September 4, 2009

Important Notice

Due to the nature of wireless communications, transmission and reception of data can never be guaranteed. Data may be delayed, corrupted (i.e., have errors) or be totally lost. Although significant delays or losses of data are rare when wireless devices such as the Sierra Wireless modem are used in a normal manner with a well-constructed network, the Sierra Wireless modem should not be used in situations where failure to transmit or receive data could result in damage of any kind to the user or any other party, including but not limited to personal injury, death, or loss of property. Sierra Wireless accepts no responsibility for damages of any kind resulting from delays or errors in data transmitted or received using the Sierra Wireless modem, or for failure of the Sierra Wireless modem to transmit or receive such data.

Safety and Hazards

Do not operate the Sierra Wireless modem in areas where blasting is in progress, where explosive atmospheres may be present, near medical equipment, near life support equipment, or any equipment which may be susceptible to any form of radio interference. In such areas, the Sierra Wireless modem **MUST BE POWERED OFF**. The Sierra Wireless modem can transmit signals that could interfere with this equipment. Do not operate the Sierra Wireless modem in any aircraft, whether the aircraft is on the ground or in flight. In aircraft, the Sierra Wireless modem **MUST BE POWERED OFF**. When operating, the Sierra Wireless modem can transmit signals that could interfere with various onboard systems.

Note: Some airlines may permit the use of cellular phones while the aircraft is on the ground and the door is open. Sierra Wireless modems may be used at this time.

The driver or operator of any vehicle should not operate the Sierra Wireless modem while in control of a vehicle. Doing so will detract from the driver or operator's control and operation of that vehicle. In some states and provinces, operating such communications devices while in control of a vehicle is an offence.

Limitations of Liability

This manual is provided “as is”. Sierra Wireless makes no warranties of any kind, either expressed or implied, including any implied warranties of merchantability, fitness for a particular purpose, or noninfringement. The recipient of the manual shall endorse all risks arising from its use.

The information in this manual is subject to change without notice and does not represent a commitment on the part of Sierra Wireless. SIERRA WIRELESS AND ITS AFFILIATES SPECIFICALLY DISCLAIM LIABILITY FOR ANY AND ALL DIRECT, INDIRECT, SPECIAL, GENERAL, INCIDENTAL, CONSEQUENTIAL, PUNITIVE OR EXEMPLARY DAMAGES INCLUDING, BUT NOT LIMITED TO, LOSS OF PROFITS OR REVENUE OR ANTICIPATED PROFITS OR REVENUE ARISING OUT OF THE USE OR INABILITY TO USE ANY SIERRA WIRELESS PRODUCT, EVEN IF SIERRA WIRELESS AND/OR ITS AFFILIATES HAS BEEN ADVISED OF THE POSSIBILITY OF SUCH DAMAGES OR THEY ARE FORESEEABLE OR FOR CLAIMS BY ANY THIRD PARTY.





Notwithstanding the foregoing, in no event shall Sierra Wireless and/or its affiliates aggregate liability arising under or in connection with the Sierra Wireless product, regardless of the number of events, occurrences, or claims giving rise to liability, be in excess of the price paid by the purchaser for the Sierra Wireless product.

Copyright

© 2009 Sierra Wireless. All rights reserved.

Trademarks

AirCard® and “Heart of the Wireless Machine®” are filed or registered trademarks of Sierra Wireless. Watcher® is a trademark of Sierra Wireless, registered in the European Community. Sierra Wireless, the Sierra Wireless logo, the red wave design, and the red-tipped antenna are trademarks of Sierra Wireless.

   , WAVECOM®, WISMO®, Wireless Microprocessor®, Wireless CPU®, Open AT® are filed or registered trademarks of Sierra Wireless S.A. in France and/or in other countries.

Windows® is a registered trademark of Microsoft Corporation.

QUALCOMM® is a registered trademark of QUALCOMM Incorporated. Used under license.

Other trademarks are the property of the respective owners.

Contact Information

Sales Desk:	Phone:	1-604-232-1488
	Hours:	8:00 AM to 5:00 PM Pacific Time
	E-mail:	sales@sierrawireless.com
Post:	Sierra Wireless 13811 Wireless Way Richmond, BC Canada V6V 3A4	
Fax:	1-604-231-1109	
Web:	www.sierrawireless.com	

Consult our website for up-to-date product descriptions, documentation, application notes, firmware upgrades, troubleshooting tips, and press releases:

www.sierrawireless.com

Document History

Version	Date	Updates
001	April 28, 2009	Rename for WISMO Family
002	September 4, 2009	Removed details for hardware description

>> Contents

1. INTRODUCTION	6
2. EQUIPMENT PREPARATION.....	7
Hardware.....	7
Software.....	7
3. LAUNCH APPLICATION	8
4. ADWL-LIGHT DOWNLOADER SETTING	9
5. DOWNLOAD PROCEDURES.....	12

>> | 1. Introduction

The aim of this document is to provide guidance on using the “Adwl-Light” Downloader tools for firmware download of the WISMO Family product.

>> 2. Equipment Preparation

Hardware

- 1 x Power Supply
- 1 x WISMO Development Kit
- 1 x WISMO Family Module
- 1 x WISMO Socket Up Board
- 1 x Power cable for Development Kit
- 1 x PC RS232 COM cable
- 1 x PC computer

Software

- Adwl-Light Downloader 5.3.3.3a
- Loader file - Numonyx_32_Binary.hex
- Application file **provided by Sierra Wireless**

3. Launch Application

- Prepare a folder with the Adwl-Light Downloader files provided by Sierra Wireless
- Launch the application by double-clicking “bfloader.exe”

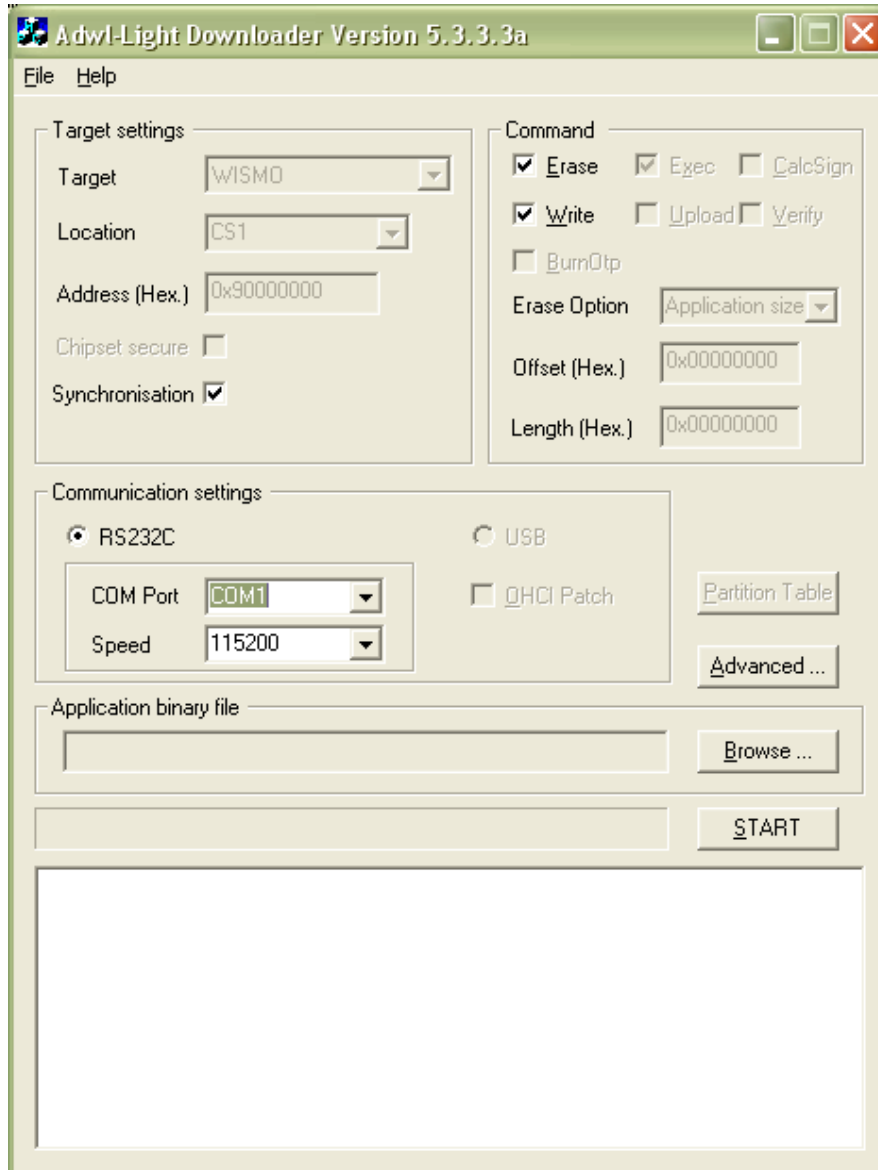
>> 4. Adwl-Light Downloader Setting

Start the Adwl-Light Downloader 5.3.3.3a; the default settings are as follows:

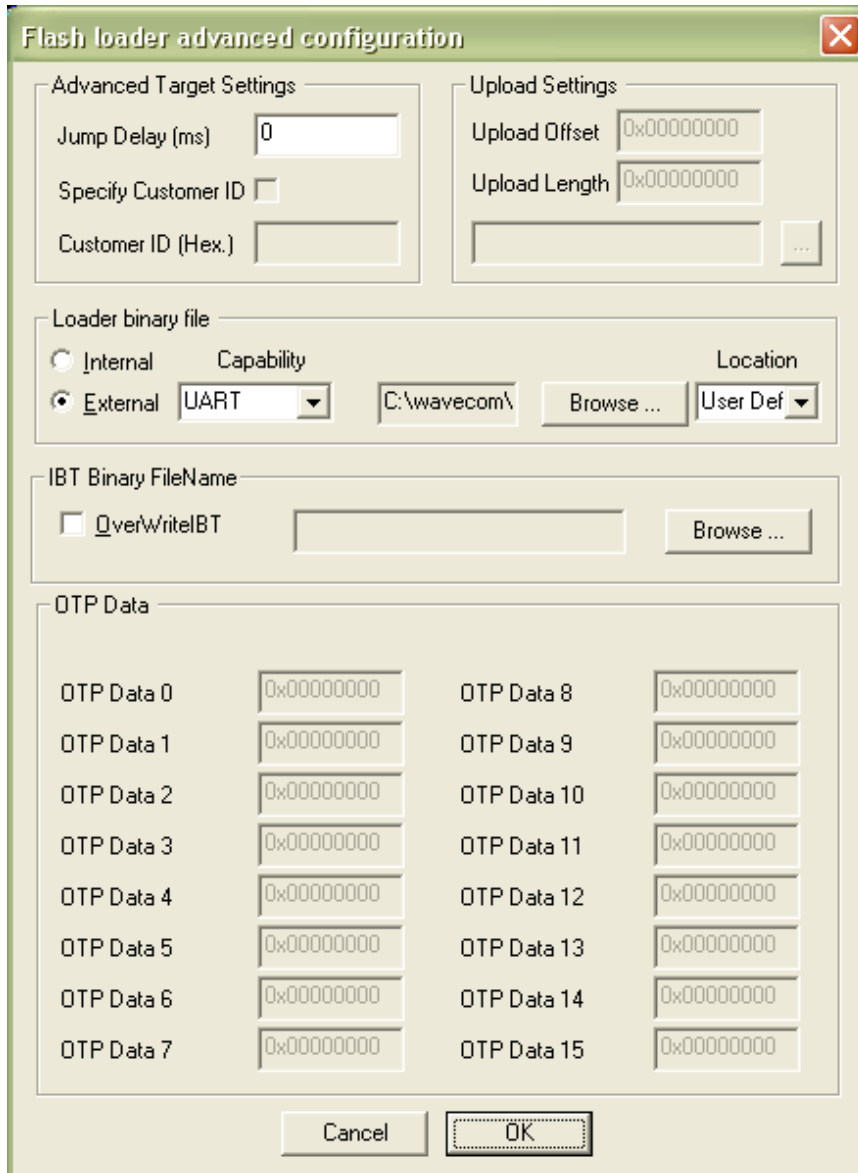
- Target: WISMO
- Location: CS1
- Synchronisation: ✓
- Erase: ✓
- Exec: ✓
- Write: ✓
- Erase Option: Application size
- Jump Delay (ms): 0

User is only allowed to set the hardware configuration and application file location as shown below.

- COM port: depends on computer setting
- Speed: depends on RS232 (recommended to use 115200)
- Click browse and select the application binary file (*.cla)



- Click “Advanced” and make the changes as follows:
 - External: **UART**
 - Click browse and select the loader file: **Numonyx_32_Binary.hex**
 - Location: **User Defined**



The image shows a dialog box titled "Flash loader advanced configuration" with a close button (X) in the top right corner. The dialog is divided into several sections:

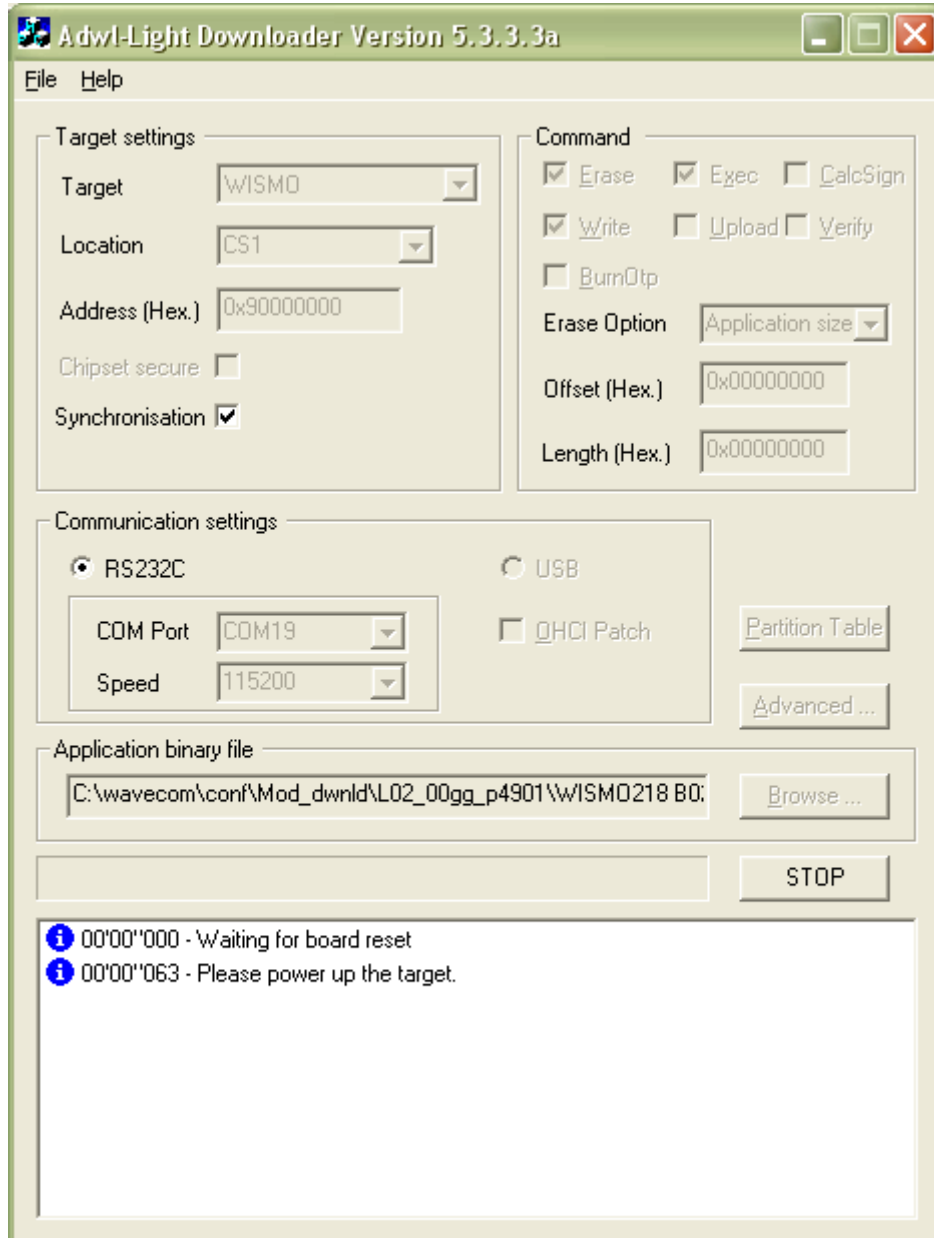
- Advanced Target Settings:**
 - Jump Delay (ms): 0
 - Specify Customer ID:
 - Customer ID (Hex.):
- Upload Settings:**
 - Upload Offset: 0x00000000
 - Upload Length: 0x00000000
 - ...
- Loader binary file:**
 - Internal Capability
 - External UART
 - Location: C:\wavecom\
 - Browse ...
 - User Def
- IBT Binary FileName:**
 - OverWriteIBT
 - Browse ...
- OTP Data:**

OTP Data 0	0x00000000	OTP Data 8	0x00000000
OTP Data 1	0x00000000	OTP Data 9	0x00000000
OTP Data 2	0x00000000	OTP Data 10	0x00000000
OTP Data 3	0x00000000	OTP Data 11	0x00000000
OTP Data 4	0x00000000	OTP Data 12	0x00000000
OTP Data 5	0x00000000	OTP Data 13	0x00000000
OTP Data 6	0x00000000	OTP Data 14	0x00000000
OTP Data 7	0x00000000	OTP Data 15	0x00000000

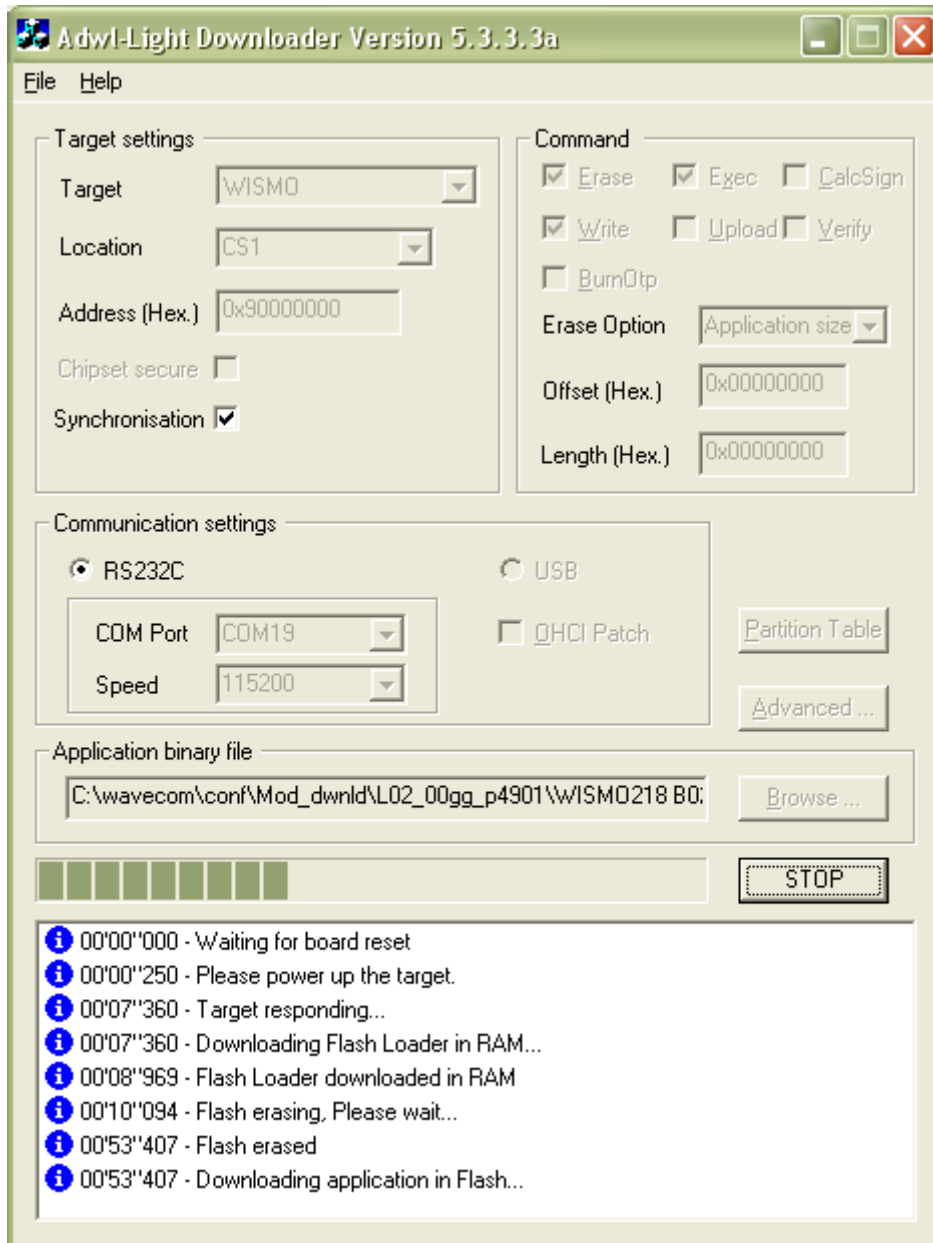
At the bottom of the dialog are "Cancel" and "OK" buttons.

5. Download Procedures

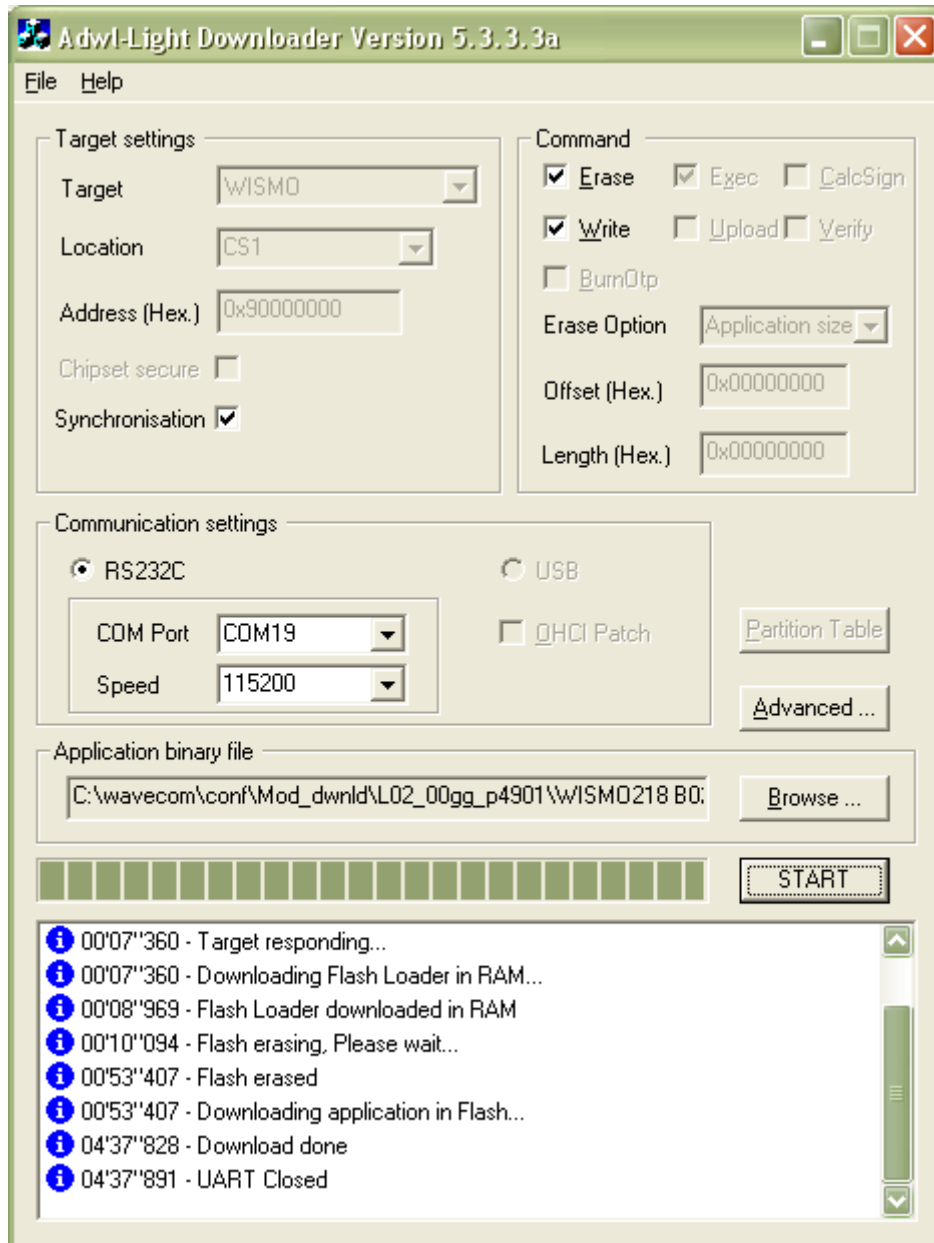
1. Prepare the installation and software setup as described in the previous hardware and software sections.
2. Switch on the power supply with 3.8V applied to the WMP100 development board.
3. Click START in the Adwl-Light downloader; the indication message is shown as follows:



4. Press BP101 on socket-up for around 4 seconds. The firmware download will then start.



5. Wait until the download is done.



6. Power off the power supply and remove the module from the socket-up board.
7. Application file download completed.



SIERRA WIRELESS
HEART OF THE WIRELESS MACHINE®

