



BC118 Discovery Board Manual Rev B

Application Note



SIERRA
WIRELESS®

41110822
Rev 1

Important Notice

Due to the nature of wireless communications, transmission and reception of data can never be guaranteed. Data may be delayed, corrupted (i.e., have errors) or be totally lost. Although significant delays or losses of data are rare when wireless devices such as the Sierra Wireless modem are used in a normal manner with a well-constructed network, the Sierra Wireless modem should not be used in situations where failure to transmit or receive data could result in damage of any kind to the user or any other party, including but not limited to personal injury, death, or loss of property. Sierra Wireless accepts no responsibility for damages of any kind resulting from delays or errors in data transmitted or received using the Sierra Wireless modem, or for failure of the Sierra Wireless modem to transmit or receive such data.

Safety and Hazards

Do not operate the Sierra Wireless modem in areas where blasting is in progress, where explosive atmospheres may be present, near medical equipment, near life support equipment, or any equipment which may be susceptible to any form of radio interference. In such areas, the Sierra Wireless modem **MUST BE POWERED OFF**. The Sierra Wireless modem can transmit signals that could interfere with this equipment.

Do not operate the Sierra Wireless modem in any aircraft, whether the aircraft is on the ground or in flight. In aircraft, the Sierra Wireless modem **MUST BE POWERED OFF**. When operating, the Sierra Wireless modem can transmit signals that could interfere with various onboard systems.

Note: Some airlines may permit the use of cellular phones while the aircraft is on the ground and the door is open. Sierra Wireless modems may be used at this time.

The driver or operator of any vehicle should not operate the Sierra Wireless modem while in control of a vehicle. Doing so will detract from the driver or operator's control and operation of that vehicle. In some states and provinces, operating such communications devices while in control of a vehicle is an offence.

Limitation of Liability

The information in this manual is subject to change without notice and does not represent a commitment on the part of Sierra Wireless. SIERRA WIRELESS AND ITS AFFILIATES SPECIFICALLY DISCLAIM LIABILITY FOR ANY AND ALL DIRECT, INDIRECT, SPECIAL, GENERAL, INCIDENTAL, CONSEQUENTIAL, PUNITIVE OR EXEMPLARY DAMAGES INCLUDING, BUT NOT LIMITED TO, LOSS OF PROFITS OR REVENUE OR ANTICIPATED PROFITS OR REVENUE ARISING OUT OF THE USE OR INABILITY TO USE ANY SIERRA WIRELESS PRODUCT, EVEN IF SIERRA WIRELESS AND/OR ITS AFFILIATES HAS BEEN ADVISED OF THE POSSIBILITY OF SUCH DAMAGES OR THEY ARE FORESEEABLE OR FOR CLAIMS BY ANY THIRD PARTY.

Notwithstanding the foregoing, in no event shall Sierra Wireless and/or its affiliates aggregate liability arising under or in connection with the Sierra Wireless product, regardless of the number of events, occurrences, or claims giving rise to liability, be in excess of the price paid by the purchaser for the Sierra Wireless product.

Patents

This product may contain technology developed by or for Sierra Wireless Inc. This product includes technology licensed from QUALCOMM®. This product is manufactured or sold by Sierra Wireless Inc. or its affiliates under one or more patents licensed from InterDigital Group and MMP Portfolio Licensing.

Copyright

© 2017 Sierra Wireless. All rights reserved.

Trademarks

Sierra Wireless®, AirPrime®, AirLink®, AirVantage® and the Sierra Wireless logo are registered trademarks of Sierra Wireless.

Windows® and Windows Vista® are registered trademarks of Microsoft Corporation.

Macintosh® and Mac OS X® are registered trademarks of Apple Inc., registered in the U.S. and other countries.

QUALCOMM® is a registered trademark of QUALCOMM Incorporated. Used under license.

Other trademarks are the property of their respective owners.

Contact Information

Sales information and technical support, including warranty and returns	Web: sierrawireless.com/company/contact-us/ Global toll-free number: 1-877-687-7795 6:00 am to 6:00 pm PST
Corporate and product information	Web: sierrawireless.com

Revision History

Revision number	Release date	Changes
1	March 23, 2017	Initial revision in SWI template.

>> Contents

Introduction	5
Applications	6
Key Specifications	6
Set Up	7
Setting Up the Board - Equipment	7
Setting up the Board – Steps	7
Configuring the BC118 Discovery Board v1	8
Header Schematics	11
Microphone 2 Input (J20)	12
Speaker Out Left Header (J16)	12
Troubleshooting	13

>> 1: Introduction

The BC118 Discovery Board is a highly flexible, easy-to-use development board for the BC118 ultra low power, small form factor Bluetooth Version 4.1 Certified module.

It comes preloaded with BlueCreation Melody Smart software, and is ideal for developers who want to quickly and cost effectively integrate Bluetooth Low Energy functionality into their products or develop standalone sensors or accessories.

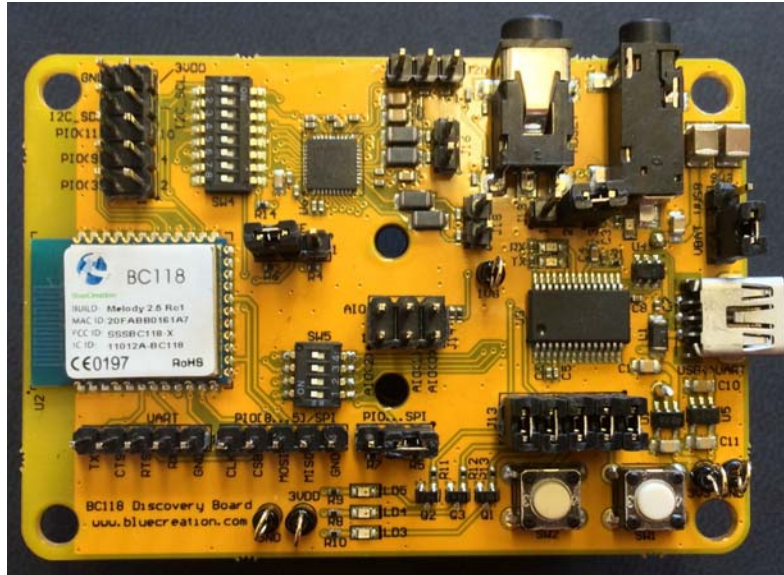


Figure 1-1: BC118 Discovery Board

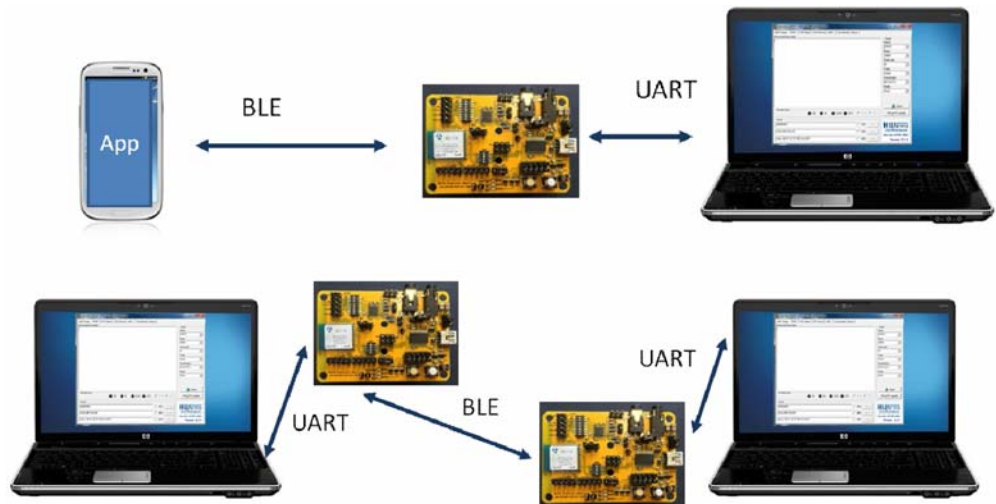


Figure 1-2: Connectivity Overview

Applications

- Industrial Automation
- Lighting
- Automotive
- Medical Devices
- Wearable Devices
- Sensors, Actuators

Key Specifications

- Bluetooth Certified 4.1 Audio module
- Single Mode: Bluetooth Low Energy (BLE)
- Embedded Bluetooth Protocol Stack
- Supports GATT Profile, Audio, Proximity, and iBeacon
- Supports I2C and UART transparent Data Modes
- Supports audio over BLE with built in CODEC
- Simple UART and GPIO interface for command and control
- Built in USB<>UART converter
- Built in battery holder
- Small form factor (70mm x 50mm x 25mm)
- Bluetooth, FCC and CE certified

>> 2: Set Up

Setting Up the Board - Equipment

To start you need to have:

1. The BC118 Discovery Board and a USB cable. Please contact see <http://source.sierrawireless.com/> for more information.
2. A computer with and USB port and serial terminal software. On Windows you can use Hercules HyperTerminal utility (http://www.hw-group.com/products/hercules/index_en.html).

Setting up the Board – Steps

1. Ensure that all jumper and switch positions on the board are as indicated in [Figure 4-1](#).
2. Connect the board to your PC using the USB cable. The board will enumerate as a COM port. Your PC will automatically find and install the required FTDI drivers.
3. Go to *Star Menu/Devices and Printers*. You will see your board will be under FT232R USB UART. When you look at *Properties* you will see under which COM port it has enumerated
4. Launch your chosen serial terminal utility. Please use the following parameters for the UART setting (these are the default Melody Smart UART parameters). Line endings for your serial terminal should be set to '\r' (carriage return) only.
 - Baud rate: 9600bps
 - Data bits: 8
 - Stop bits: 1
 - Parity bit: No parity
 - HW Flow Control: Disabled

In your serial terminal window, type *RST* and then press carriage return/Enter. If you receive an *ERR* response, make sure your serial terminal is sending only \r as line endings. You should then see the BlueCreation Prompt. You are now ready to use the board. Please refer to the Melody Smart Manual for more information on the different commands you can use to control the board.

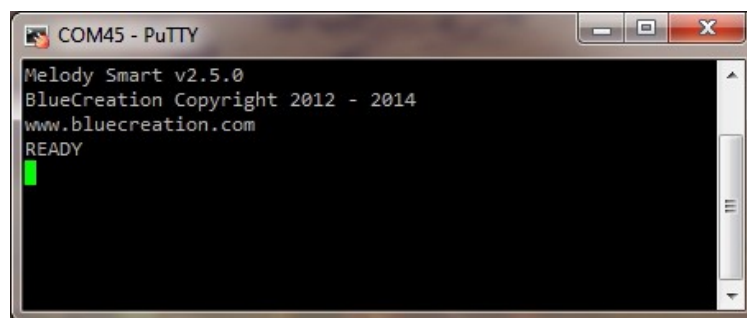


Figure 2-1: Melody Welcome Prompt

3: Configuring the BC118 Discovery Board v1

The BlueCreation BC118 Discovery Board offers easy hardware configuration via switches and jumpers and access via headers. The Discovery Board also comes with two general purpose push-buttons and three LEDs and an audio CODEC, microphone in, headphones out, line out and header access to balanced speaker out and balanced/dual microphone in.

Please refer to the figure below as to the positions and names of the different switches, push-buttons, jumpers and headers. Switches and jumpers are annotated in green boxes, push-buttons and LEDs are in yellow boxes, headers are in red, the AIO config/header block in blue.

Switch position meanings, and header pin 1 and pin signals are also printed on the Discovery Kit., whenever space allows. Please ensure that before plugging in the kit, the jumpers and switches are in the positions indicated in the picture below. The following tables explain the functionality of every header, jumper and switch on the board and list the default settings (for switches and jumpers) and functionality (for headers).

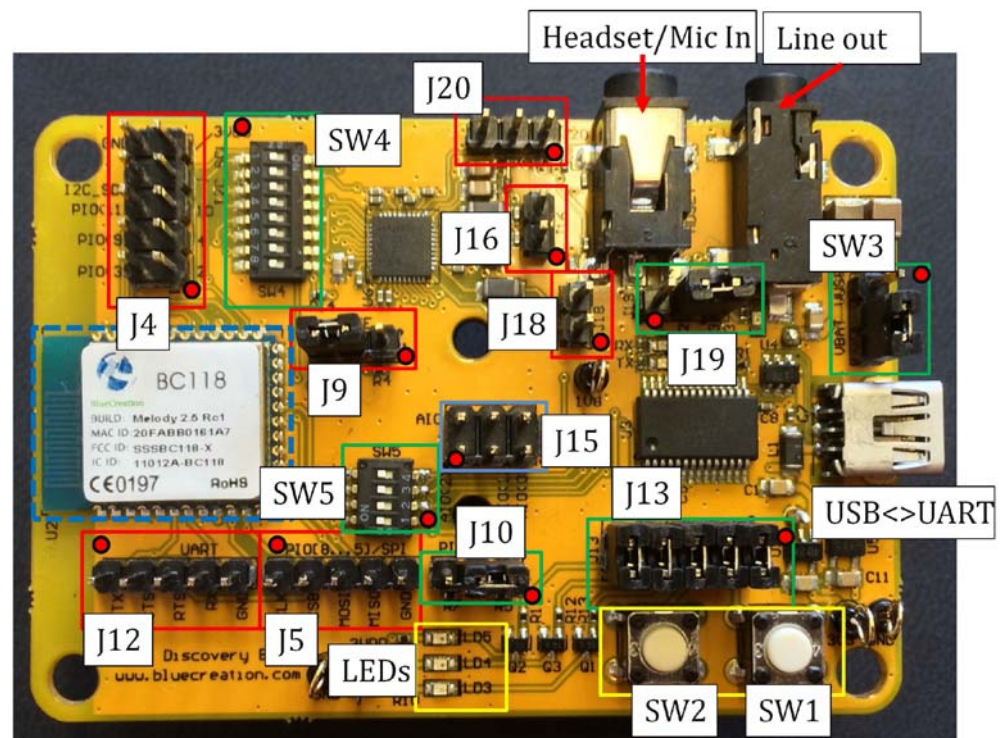


Figure 3-1: BC118 Discovery Board v1 switches, jumpers, connectors, and push button location

Table 3-1: Switch Functionality an Configuration

Switch	Function	Default
SW3	Select the voltage source for 1V8 generation V_{USB} or V_{BAT}	V_{USB}
SW4.1	When in ON position, connects I2S_SCL line to CODEC	OFF
SW4.2	When in ON position, connects I2S_SDA line to CODEC	OFF
SW4.3	When in ON position, connects PIO7/SPI_MOSI line to CODEC	OFF
SW4.4	When in ON position, connects PIO3 line to CODEC	OFF
SW4.5	When in ON position, connects PIO4 line to CODEC	OFF
SW4.6	When in ON position, connects PIO10 line to CODEC	OFF
SW4.7	When in ON position, connects PIO9 line to CODEC	OFF
SW4.8	When in ON position, connects PIO11 line to CODEC	OFF
SW5.1	When in ON position, connects PIO5/UART_CTS line to UASB<>UART	ON
SW5.2	When in ON position, connects PIO5/UART_RTS line to UASB<>UART	ON
SW5.3	When in ON position, connects UART_RX line to UASB<>UART	ON
SW5.4	When in ON position, connects UART_TX line to UASB<>UART	ON

Table 3-2: Jumper Functionality and Configuration

Jumper	Function	Default
J10	Select functionality for PIO[5 - 8] - SPI or PIOs. Selecting [1 2] sets functionality to SPI. Selecting [2 3] to PIO	[2 3]
J12	Wake Select. Pin 2 is the module Wake Pin. Selecting [1 2] pulls it high, selecting [2 3] pulls it low.	[2 3]
J13[1 2]	Connect PIO8/SPI_MISO to SW1	Closed
J13[3 4]	Connect PIO7/SPI_MISO to SW2	Closed
J13[5 6]	Connect PIO4 to LD3	Closed
J13[7 8]	Connect PIO9 to LD4	Closed
J13[9 10]	Connect PIO10 to LD5	Closed
J14[1 2]	If AIO configurations enabled, Pin 1 is used to output status. Logical high indicates connected state.	Open

Table 3-2: Jumper Functionality and Configuration

Jumper	Function	Default
J14[3 4]	Can be used to configure module at boot time if AIO configurations are enabled. Open selects: Closed selects: TRS=ON, goes into transparent mode, as set in TRSM	Open
J14[5 6]	Can be used to configure module at boot time if AIO configurations are enabled. Open selects: Closed selects: CENT=ON at boot time, overriding mode config.	Open
J19	Select 3VDD from USB or Battery. Selecting [1 2] chooses battery, [2 3] chooses USB.	[2 3]

Table 3-3: Push-button Functionality

Push Button	Functionality	Alternative Function
SW1	Exit transparent mode	NA
SW2	None	NA

4: Header Schematics

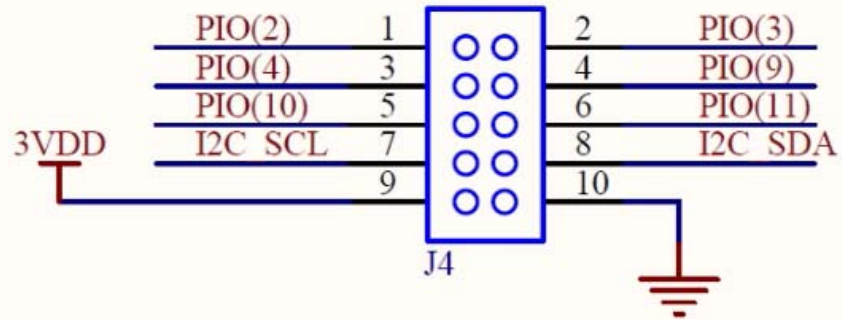


Figure 4-1: PIO Header (J4)

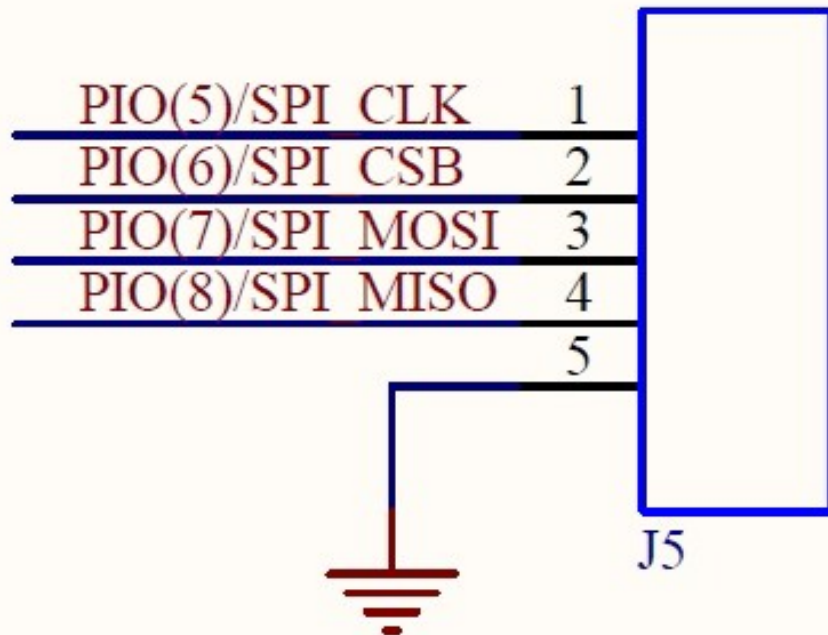


Figure 4-2: SPI/PIO Header (J5)

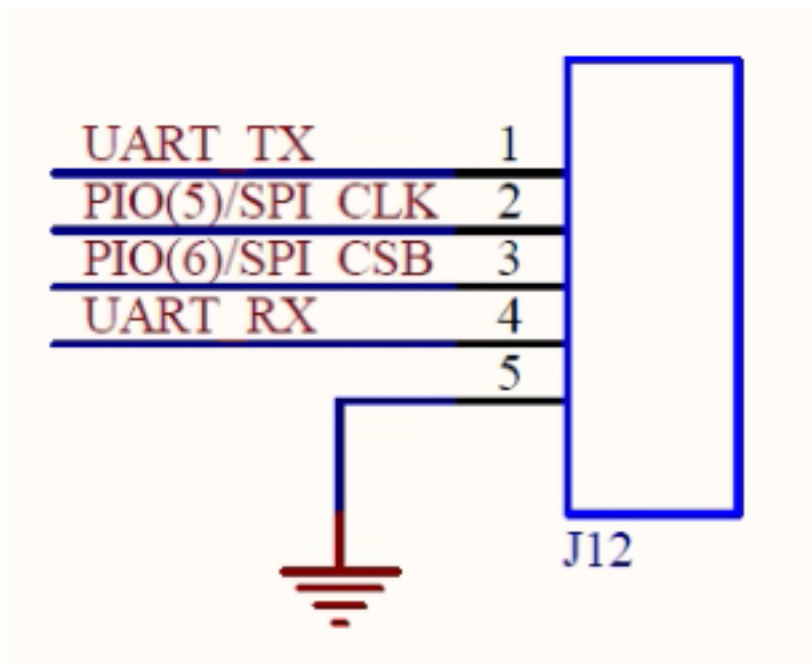


Figure 4-3: UART Header (J12)

Microphone 2 Input (J20)

Pin 1 is VDD, Pin 2 is IN2/DMC, Pin 3 is IN1/DMD.

Speaker Out Left Header (J16)

Balanced speaker output; Pin 1 is Negative, Pin 2 is positive.

Speaker Out Right Header (J18)

Balanced speaker output; Pin 1 is Negative, Pin 2 is positive.

>> 5: Troubleshooting

If your board does not seem to work, please check the points below which are the most common problems encountered. If you are still having issues, please contact Support.

1. **POWER PROBLEMS:** Check that the board is Turned ON. When you plug in the USB, the LEDs should start flashing indicating that the board is Turned ON. On some of the older boards, only the USB to Module powers the Board so you would need to attach the USB to that port.
2. **SWITCH/JUMPER SETTING PROBLEMS:** Check that the board has all the switches in the default positions indicated in [Table 3-1](#) and [Table 3-2](#).
3. **FTDI DRIVERS:** The PC usually automatically installs the USB FTDI Drivers when you first plug in the board. If the Drivers are not successfully installed, unplug the board; delete any drivers that you have previously installed. Then make sure you have an internet connection and re-plug the board. If this still does not work, try and plug the board on a different USB port. If this still does not work, you can bypass by using a USB/UART Cable and connecting directly to the RS232 port.

FTDI driver download: <http://www.ftdichip.com/Drivers/VCP.htm>.

FTDI driver delete utility: http://www.ftdichip.com/Support/Utilities/CDMUninstaller_v1.4.zip.

4. **UART SETTINGS:** The UART communication will happen with the parameters described at the beginning of this manual. Please check that you have the right UART settings.
5. **BLUETOOTH COMMUNICATION:** If you want to connect to your board, make sure that the module is in discoverable state. When you type STS in the command line the module should return 'STS P ADV. If this is not the case, please type in 'ADV ON'. Refer to the Melody manual for more options.