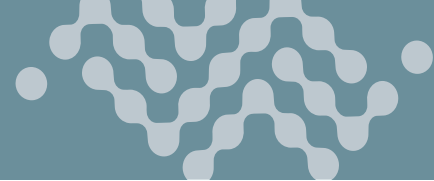


Sierra Wireless® RV55 Quick Start Guide



This guide provides instructions for quickly getting your Sierra Wireless® AirLink® RV55 router configured and connected. For more detailed information, refer to the following:

- AirLink RV55 Hardware User Guide
- AirLink RV55 Software Configuration User Guide

Both are available for download from the Sierra Wireless web site source.sierrawireless.com. Click **sign up** to register for free.

NOTE: Remote ACEmanager™ access is disabled by default for security. If required, enable it remotely using ALMS or locally using ACEmanager (Services > ACEmanager) and change the default password (Admin > Change Password).

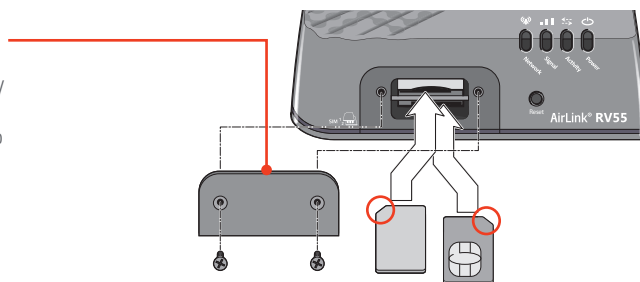
STEP 1 – Register your device in ALMS

Every new AirLink router includes one year of AirLink Complete. AirLink Complete provides access to AirLink Management Service (ALMS), 24x7 Technical Support and hardware warranty. For more information on AirLink Complete, please visit <https://www.sierrawireless.com/products-and-solutions/routers-gateways/airlink-complete/>

1. Go to <https://sierrawireless.com/complete/register> and log in or sign up for an ALMS account.
2. Register your device following the instructions on the screen. For more information, visit <https://source.sierrawireless.com/airvantage/alms/howto/gettingstarted/>
3. The device will automatically appear in ALMS in a “Pending” state and activate on power-up (see STEP 3 - Connect and Turn On the Router).

STEP 2 – Install the SIM Cards

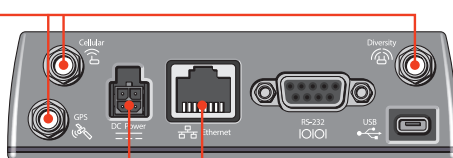
1. Using a #1 Phillips screwdriver, remove the SIM card cover.
2. Slide the SIM cards into the SIM card slots until they click into place. By default, the SIM card in slot 1 (the upper slot) is the Primary SIM card. When the RV55 is powered on or reboots, it automatically connects to the network associated with the Primary SIM card.
3. Re-attach the cover.



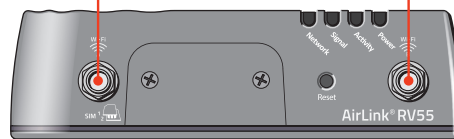
STEP 3 – Connect and Turn On the Router

Sierra Wireless strongly recommends that you always ground the chassis using the unpainted mounting hole. For more information, refer to the RV55 Hardware User Guide. A green LED chase may occur when the router is powered on, indicating that the radio module is being configured for your SIM card. The process can take 6–7 minutes. Once the router's radio module is configured for the SIM card, it automatically begins the activation/provisioning process and attempts to connect to the mobile network. This process takes a few minutes. A successful connection is indicated by a solid green Network LED. If the router does not automatically connect to the network, refer to the ALEOS Software Configuration User Guide (WAN/Cellular chapter).

1. Connect Cellular, Diversity and GNSS antennas (if applicable).



2. Connect the Dual Wi-Fi antennas (if applicable).

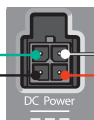


3. Connect 9 – 36 VDC.

To operate the router between 7 – 36 V, after startup, launch ACEmanager, go to Services > Power Management, and adjust the low voltage standby settings.

4. Connect a Windows® computer to the router with an Ethernet cable. If required by your application, connect the RS-232 port and/or the USB port.

Green (GPIO) Optional
Black (GND)



White (Ignition Sense)¹
Red (Power)

¹ If not using an AC adapter, Ignition Sense must be connected to vehicle ignition or the positive terminal of your power supply.

STEP 4 – Configure your AirLink Router

AirLink routers can be configured through the following two options:

OPTION A – CONNECTING REMOTELY THROUGH ALMS

This option is recommended when you want to apply a pre-defined template or to make minor adjustments to the default router configuration.

Using a web browser, log into your ALMS account or visit <https://sierrawireless.com/complete/register>

This option requires the device to be registered, (see STEP 1 - Register your device in ALMS).

NOTE: Changes made through ALMS can take up to 1 day to take effect (timing of refresh configurable – consult the Software configuration guide for more details).

OPTION B – CONNECTING LOCALLY THROUGH ACEMANAGER

This option is recommended when you need to set up a complex configuration/template that requires multiple instances of trial and error and/or instant feedback.

1. On a computer connected to the RV55, enter <https://192.168.13.31:9443> in the web browser. The ACEmanager login screen appears.
2. The administrator user name is entered by default. Enter the default password (printed on the label on the unit's base) and click Login. The Status > Home screen appears.
NOTE: For system security, please change the default password as soon as possible.
3. Check the Network State field. It should read Network Ready, which indicates the router is connected to the network. If not, see STEP 3 - Connect and Turn On the Router. For more information on configuring your router for power saving, refer to the ALEOS Software Configuration User Guide.

SIERRA WIRELESS CONTACT INFORMATION

Sales information and technical support:

Web: sierrawireless.com/company/contact-us
(including warranty and returns)

Global toll-free number: 1-877-687-7795

Corporate and product information:

Web: www.sierrawireless.com

International Quick Start Guides available here: https://source.sierrawireless.com/resources/airlink/hardware_reference_docs/airlink-international-user-guides/