



P1.0.0.18A

Customer Release Note

Document number	4134091
Rev	R01.00
Date	2013/10/24

Document History

Rev XX.YY	Date YYYY/MM/DD	Updates	Author
01.00	2013/10/24	Creation	Xin

Table of Contents

<u>1</u>	<u>INTRODUCTION</u>	<u>4</u>
1.1	SCOPE OF THIS DOCUMENT	4
1.2	AUDIENCE OF THIS DOCUMENT	4
1.3	NEW FEATURES / ENHANCEMENTS	4
<u>2</u>	<u>ABBREVIATIONS AND DEFINITIONS</u>	<u>4</u>
<u>3</u>	<u>RELATED DOCUMENTATION</u>	<u>4</u>
<u>4</u>	<u>COMPATIBILITY</u>	<u>5</u>
<u>5</u>	<u>SOFTWARE RELEASE DESCRIPTION</u>	<u>5</u>
5.1	RELEASE IDENTIFICATION	5
5.2	RELEASED FILES AND DOWNLOAD PROCESSES	6
5.3	SOFTWARE TOOLS VERSIONS	6
<u>6</u>	<u>SOFTWARE CHANGES DESCRIPTION</u>	<u>7</u>
6.1	VALIDATED CORRECTIONS / IMPROVEMENTS	7
6.2	INTERFACE CHANGES	8
<u>7</u>	<u>INSTALLING AND UPGRADING THE RELEASE</u>	<u>8</u>
7.1	DOWNLOAD THE ENTIRE NECESSARY UPGRADE FILES	8
7.2	UPGRADE INSTRUCTIONS	9
7.3	WINDOWS ONE-CLICK TOOLS	9
7.4	BINARY FILES	10
<u>8</u>	<u>TROUBLESHOOTING</u>	<u>10</u>
<u>9</u>	<u>CERTIFICATION DESCRIPTION</u>	<u>10</u>
<u>10</u>	<u>RESTRICTIONS AND ADDITIONAL INFORMATION</u>	<u>11</u>

1 Introduction

1.1 Scope of this document

This document is for announcing that the external formal build has been released for MDM6200 platform and elaborate what issues have been fixed and the enhancement/new feature in this formal release.

1.2 Audience of this document

Customer can get related information from this external formal release note to decide if need apply this build to integrate into their products.

1.3 New Features / Enhancements

Feature	Description
NA	NA

2 Abbreviations and definitions

Abbreviation/Acronym	Definitions
NA	NA

3 Related documentation

Ref. #	Doc. #	Document title
NA	NA	NA



4 Compatibility

Hardware compatibility

Airprime compatibility list
SL8090, SL8092, MC8090, MC8092

Software compatibility

Component	Version
Firmware	P1_0_0_18A
Open AT OS	Not support
Location Library	NA
eCall inbandModem Library	NA
Security Library	NA
Internet Library	NA
Extended AT Application	NA

5 Software Release Description

5.1 Release identification

Component	Revision
Boot loader	SIERRA_BOOT_P1.0.0.18A.cwe
Application	SIERRA_P1.0.0.18A.cwe
Date of generation	10/24/2013
Binary Size	SIERRA_BOOT_P1.0.0.18A.cwe (534124bytes) SIERRA_P1.0.0.18A.cwe (19976592bytes)
Checksum	SIERRA_BOOT_P1.0.0.18A.cwe (CD65DC17) SIERRA_P1.0.0.18A.cwe (BE940C25)
IMEI SV	9
Qualcomm Stack Version	AMSS 6600 1.5.77 (M6600ASCAUTSZ1577 – Thin UI) SBA_ M6600ASCAUTSZ157705 SBA_ M6600ASCAUTSZ157710 SBA_ M6600ASCAUTSZ157731 SBA_ M6600ASCAUTSZ157738 SBA_ M6600ASCAUTSZ157751 SBA_ M6600ASCAUTSZ157756
USB Host Version	Support USB1.1 and USB2.0

5.2 Released Files and Download Processes

Download Option	Files
None	None

5.3 Software Tools Versions

S/W Tools Name	Version	Resource file
BinUpdater	R11.2.1105.0	\\cnszx-fl01\Groups\Engineering\Firmware\PCtools\HostSoftware\BinUpdater\BinUpdater-R11.2.1105.0

6 Software Changes Description

6.1 Validated Corrections / Improvements

Description	Impacted Domain	Impacted Sub-Domain	Fixed in
Update SE13	SE13	SE13	P1_0_0_18A
Change call state for !SWICALLPROG from incoming to waiting when there are held calls but no active calls on receiving a new call	AT	Call	P1_0_0_18
Fix the issue that non-voice calls are counted into call sequence number.	AT	Call	P1_0_0_18
Fix the issue that +CIEV can't be triggered when +CMER is set to 1,0,0,1,0	AT	AT	P1_0_0_18
Change AT^HVER implementation to make it same as SL909x	AT	AT	P1_0_0_18
Add voice mail notification feature	AT	Voice mail	P1_0_0_18
Ignore ADF DF2 DF3 polling error	SIM	SIM	P1_0_0_18
Support AT+CPIN2	AT	SIM	P1_0_0_18
Removing +CMTI for VMI and allow +WVMI to wake up USB BUS	AT	Voice mail	P1_0_0_18
Update SE13 list	SE13	SE13	P1_0_0_18
Add audio profiles for I2S interface	I2S	I2S	P1_0_0_15
Added NMEA port auto tracking	GPS	NMEA	P1_0_0_14
Added initial value for Dual-mic	Voice	Voice	P1_0_0_14
Corrected The DTMF tone does not stop playing after the call is terminated	Voice	DTMF	P1_0_0_14
Corrected Modem crash after AT command at!mapuart=1	AT	UART	P1_0_0_14
Corrected Busy tone always can be heard after hang up from MT device	Call	Call	P1_0_0_14
Added IPv6 on PAD	PAD	PAD	P1_0_0_12
Added setting host post state is implemented	USB	USB	P1_0_0_12
Added NMEA data come from physical UART port	GPS	NMEA	P1_0_0_12
Added NMEA get mode cmd is not handled	GPS	NMEA	P1_0_0_12
Added IPv6 feature from MDM8200	Data	Data	P1_0_0_12
Added I2S support on SL8092	I2C	I2C	P1_0_0_12
Added Tx burst on indication configurable	UMTS	L1	P1_0_0_12
Enhanced stability when starting IPv4 and IPv6 data call together	Data	Data	P1_0_0_12



Description	Impacted Domain	Impacted Sub-Domain	Fixed in
Enhanced Tx burst stability	UMTS	L1	P1_0_0_12
Enhanced factory image generation stability	Image	Image	P1_0_0_12
Enhanced stability when laptop resumed from standby	Sleep	Sleep	P1_0_0_12
Corrected Inner loop control stability in test bench for SL8092/93	Test	Tese	P1_0_0_12
Corrected IPR value cannot be saved after reset	AT	UART	P1_0_0_12
Corrected GSM Tx power lower than expected after calibration	GSM	L1	P1_0_0_12
Corrected The HSDPA category is wrong	UMTS	HSDPA	P1_0_0_12
Corrected AT port will not work after starting GPS for a few seconds	AT	GPS	P1_0_0_12
Changed IMEISVN to 9	AT	AT	P1_0_0_12
Added support for WCDMA band VI (SL8090/SL8091)	UMTS	WCDMA	P1_0_0_8
Extended SAR back-off offset range	UMTS	L1	P1_0_0_8
Corrected AT&T certification test case failures	ATT	ATT	P1_0_0_8
Corrected AT!WPOWER and AT!GSTATUS bug	AT	AT	P1_0_0_8
Changed IMEISVN to 8	AT	AT	P1_0_0_8

6.2 Interface Changes

Command	Comment
None	None

7 Installing and Upgrading the Release

7.1 Download the entire necessary upgrade files

Download the files and follow any additional instructions from the restricted access MiniCard SharePoint website:

From: www.sierrawireless.com/minicard

Please contact your Sierra Wireless representative for access information.

Template #:	4134091	Revision:	R01.00
-------------	---------	-----------	--------

7.2 Upgrade Instructions

There are two methods of upgrading a module, One-Click Tools and binary files. One-Click Tools are supplied in EXE format and are meant to run on Windows platforms such as on a PC which is connected to a MiniCard dev kit. Binary files are supplied in CWE format and may be used when the module is in the target platform. The following table summarizes the file types to use for each method.

7.3 Windows One-Click Tools

This software tool supports the Sierra Wireless MC8790 series on the following Microsoft Operating Systems:

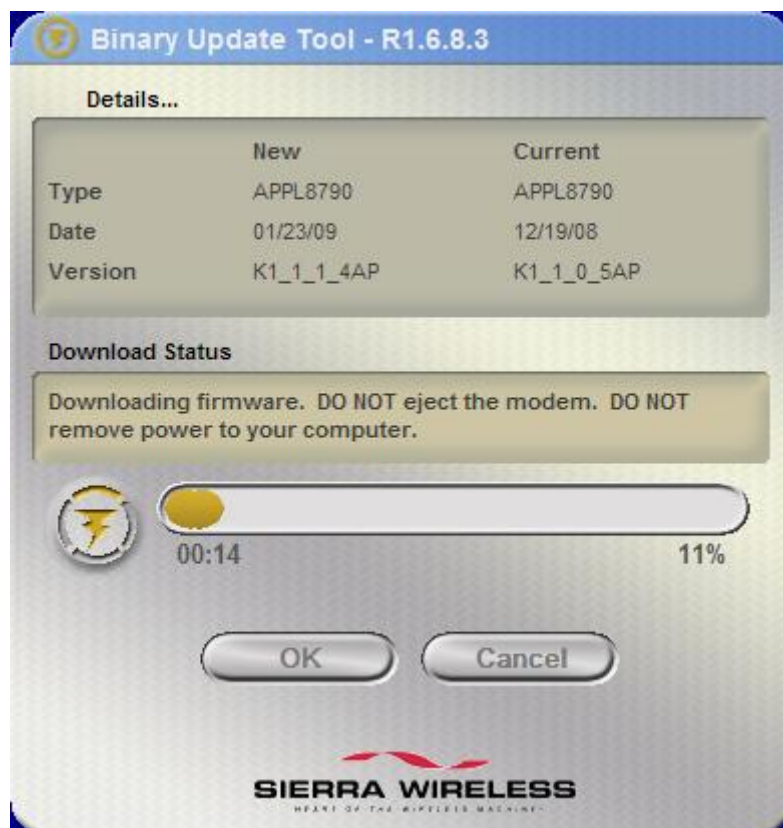
1. Windows XP SP2 (Service Pack 2) or higher
2. Windows 2000 SP4 (Service Pack 4)
3. Windows Vista SP1 (Service Pack 1) or higher

Sierra Wireless MC8790 firmware upgrades are provided in a One-Click Tool that contains the binary firmware files within it. Before you start your upgrade, please ensure the following:

- Your computer is connected to an AC power supply, or that it has at least ½ hour of battery life remaining
- Please close all active sessions such as Hyperterminal, etc. that you may have open, debug logging sessions, etc.
- Please ensure that your card is powered and operating normally

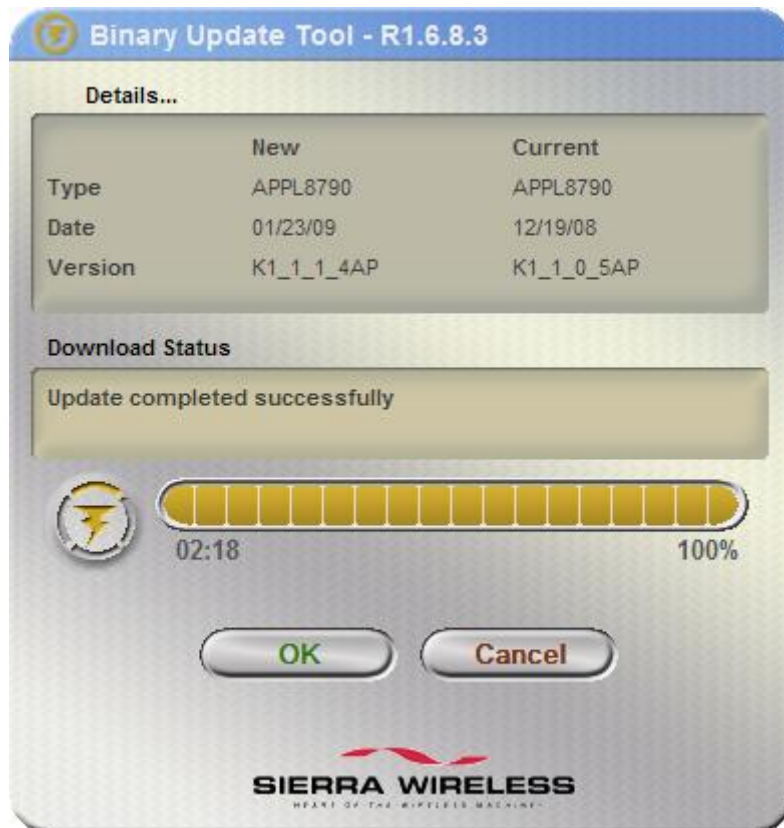
To proceed with the firmware upgrade, please follow the next steps:

1. Click on the One-Click Tool executable to start the upgrade process
2. When the One-Click Tool runs, starts you will see an image similar to the following:



- The firmware upgrade should run automatically. If not, then click OK to begin the upgrade process.

NOTE: The upgrade can take up to 10 minutes to complete. Do not remove the power to either the laptop or the card until the One-Click Tool announces that the upgrade has been successful, as shown below.



NOTE 1: When a boot image is released it is usually bundled with the application firmware within the same One-Click Tool executable. That One-Click Tool will automatically install both the boot and application images for you.

7.4 Binary Files

If you are using binary CWE files to update your module, your platform must be setup to handle these files. Use the method that you have setup for your platform in order to update the module.

8 Troubleshooting

None

9 Certification Description

This version has passed the PTCRB certification



10 Restrictions and Additional Information

Issue ID	Description (What/When)	Impacted Domain	Impacted Sub-Domain
None	None	None	None