

Optimizing AirLink RV Series Performance on a Windows PC

APPLICATION NOTE

This application note, intended for AirLink RV50/RV50X/RV55 customers, provides procedures for optimizing RV50/RV50X/RV55 throughput when connected via Ethernet to a Windows PC.

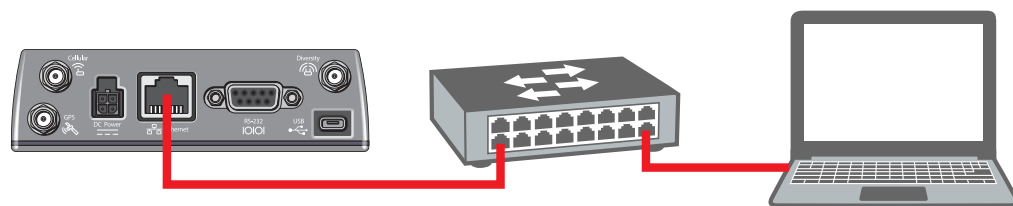
The AirLink RV50, RV50X and RV55 are referred to as the “AirLink router” throughout the rest of this document.

Background

When directly connecting a Windows PC to the AirLink router’s Ethernet port, the throughput may be affected by a known Windows PC Ethernet driver issue. Specifically, the uplink throughput (either Ethernet-to-cellular or Ethernet-to-Wi-Fi) may be significantly less than expected. This application note outlines workarounds should this issue affect your AirLink router deployment.

Solution

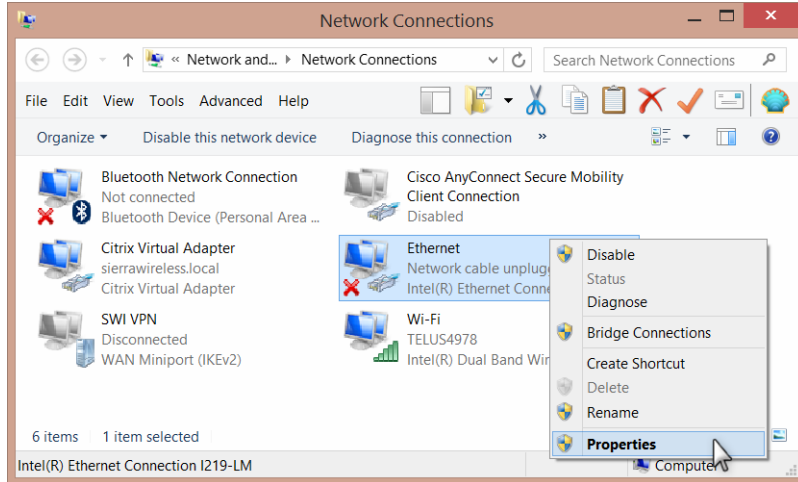
To achieve maximum throughput when connecting the AirLink router to a Windows PC, Sierra Wireless recommends connecting your Windows PC to the AirLink router Ethernet port via an Ethernet switch, as shown below.



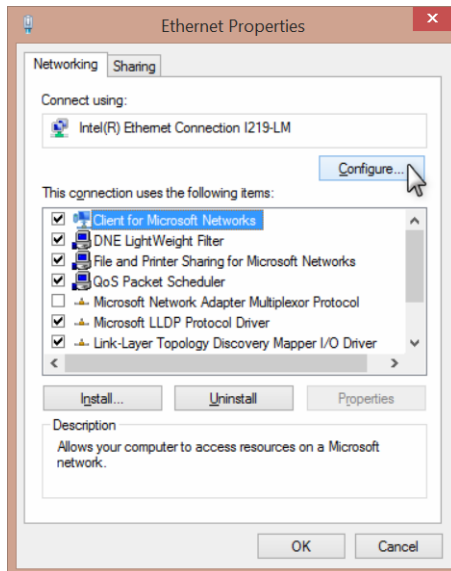
If connecting your Windows PC using an Ethernet switch is not possible, then you can adjust the Windows PC Ethernet driver parameters as described in [Enabling Flow Control on the PC](#).

Enabling Flow Control on the PC

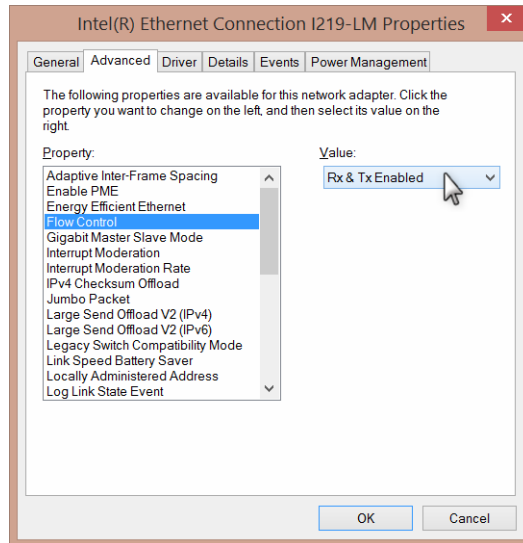
1. Navigate to Network Connections.
2. Right click the Ethernet adapter and select **Properties**.



3. Under **Ethernet Properties**, select **Client for Microsoft Networks** and then click **Configure**.

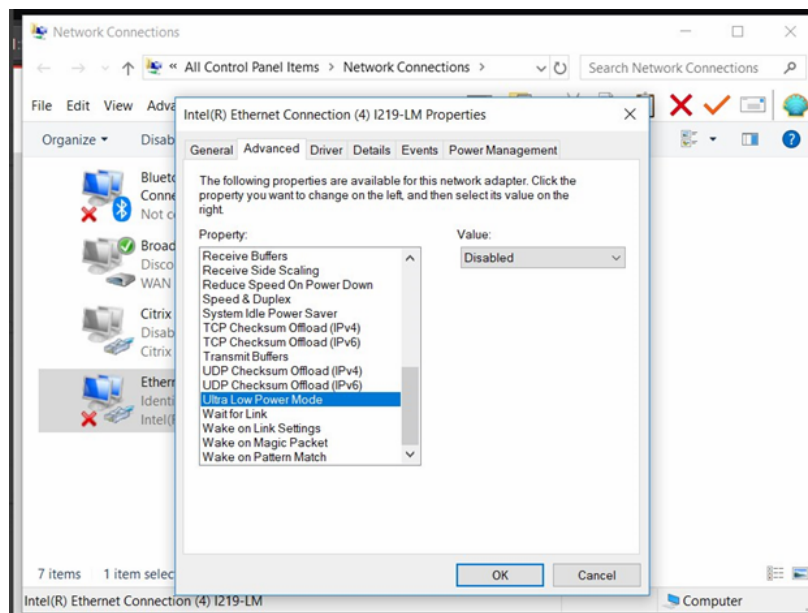


4. On the **Advanced** tab, select **Flow Control** and ensure it is set to **Rx and Tx Enabled**.



5. Select **Ultra Low Power Mode** and set to **Disabled**.

Note: An example from Windows 10 is shown below. Prior to Windows 10, the Ultra Low Power Mode is called Energy Efficient Ethernet and should be set to Off.



6. Click **OK**.

Document History

Revision number	Release date	Changes
1	July 2021	First release

Legal Notice

Limitation of Liability

The information in this document is subject to change without notice and does not represent a commitment on the part of Sierra Wireless. SIERRA WIRELESS AND ITS AFFILIATES SPECIFICALLY DISCLAIM LIABILITY FOR ANY AND ALL DIRECT, INDIRECT, SPECIAL, GENERAL, INCIDENTAL, CONSEQUENTIAL, PUNITIVE OR EXEMPLARY DAMAGES INCLUDING, BUT NOT LIMITED TO, LOSS OF PROFITS OR REVENUE OR ANTICIPATED PROFITS OR REVENUE ARISING OUT OF THE USE OR INABILITY TO USE ANY SIERRA WIRELESS PRODUCT, EVEN IF SIERRA WIRELESS AND/OR ITS AFFILIATES HAS BEEN ADVISED OF THE POSSIBILITY OF SUCH DAMAGES OR THEY ARE FORESEEABLE OR FOR CLAIMS BY ANY THIRD PARTY.

Notwithstanding the foregoing, in no event shall Sierra Wireless and/or its affiliates aggregate liability arising under or in connection with the Sierra Wireless product, regardless of the number of events, occurrences, or claims giving rise to liability, be in excess of the price paid by the purchaser for the Sierra Wireless product.

Patents

This product may contain technology developed by or for Sierra Wireless Inc. This product is manufactured or sold by Sierra Wireless Inc. or its affiliates under one or more patents licensed from MMP Portfolio Licensing.

Copyright

© 2021 Sierra Wireless. All rights reserved.

Trademarks

Sierra Wireless[®], AirLink[®], AirVantage[®] and the Sierra Wireless logo are registered trademarks of Sierra Wireless.

Windows[®] and Windows Vista[®] are registered trademarks of Microsoft Corporation.

Macintosh[®] and Mac OS X[®] are registered trademarks of Apple Inc., registered in the U.S. and other countries.

Other trademarks are the property of their respective owners.

**Contact
Information**

Sales information and technical support, including warranty and returns	Web: sierrawireless.com/company/contact-us/ Global toll-free number: 1-877-687-7795 6:00 am to 5:00 pm PST
Corporate and product information	Web: sierrawireless.com