

# Sierra Wireless® RV50X Quick Start Guide

This guide provides instructions for quickly getting your Sierra Wireless® AirLink® RV50X gateway configured and connected. For more detailed information, refer to the following:

- AirLink RV50 Series Hardware User Guide
- ALEOS Software Configuration User Guide for AirLink RV50 Series

Both are available for download from the Sierra Wireless web site [source.sierrawireless.com](http://source.sierrawireless.com). Click [sign up](#) to register for free..

**NOTE:** Remote ACEmanager™ access is disabled by default for security reasons. If required, enable it remotely using AirLink Management Service or locally using ACEmanager (Services > ACEmanager) and change the default password (Admin > Change Password).

## STEP 1 – Register Your Gateway in ALMS

Every new AirLink gateway includes one year of AirLink Complete. AirLink Complete provides access to ALMS (AirLink Management Service), 24x7 Technical Support and hardware warranty. For more information on AirLink Complete, please visit

<https://www.sierrawireless.com/products-and-solutions/routers-gateways/airlink-complete/>

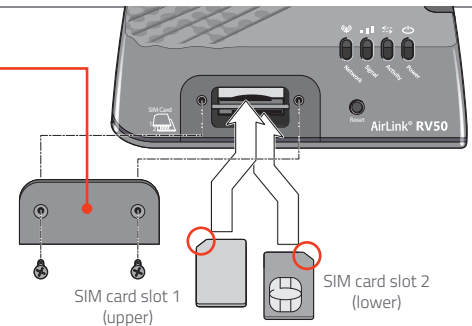
1. Go to <https://sierrawireless.com/complete/register> and log in or sign up for an ALMS account.
2. Register your gateway following the instructions on the screen. For more information, visit <https://source.sierrawireless.com/airvantage/alms/howto/gettingstarted/>
3. Your gateway will automatically appear in ALMS in a “Pending” state and activate on power-up (see *STEP 3 - Connect and Turn On the Gateway*).

## STEP 2 – Install the SIM Card

1. Use a #1 Phillips screwdriver to remove the SIM card cover.
2. Slide the SIM cards into the SIM card slots until they click into place.

By default, the SIM card in slot 1 (the upper slot) is the Primary SIM card. When the RV50X is powered on or reboots, it automatically connects to the network associated with the Primary SIM card. Later, if you want to switch the device to another network operator, you can use ACEmanager to configure slot 2 to be the Primary SIM card slot. For more information, refer to the ALEOS Software Configuration User Guide for AirLink RV50 Series.

3. Re-attach the cover.

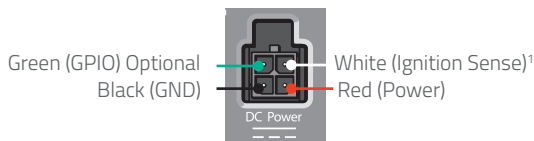
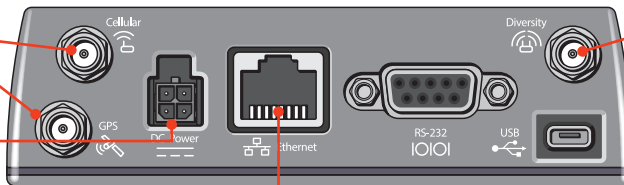


## STEP 3 – Connect and Turn On the Gateway

Sierra Wireless strongly recommends that you always ground the chassis using the unpainted mounting hole. For more information, refer to the RV50 Series Hardware User Guide. A green LED chase may occur when the gateway is powered on, indicating that the radio module is being configured for your SIM card. The process may take 6–7 minutes. Once the gateway’s radio module is configured for the SIM card, it automatically begins the activation/provisioning process and attempts to connect to the mobile network. This process takes a few minutes. A successful connection is indicated by a solid green Network LED. If the gateway does not automatically connect to the network, refer to the ALEOS Software Configuration User Guide for AirLink RV50 Series (WAN/Cellular chapter).

## STEP 3 – Connect and Turn On the Gateway (continued)

1. Connect the Cellular and GPS antennas.
2. Recommended: Connect the Diversity antenna.
3. Connect 9–36 VDC. To operate the gateway between 7 – 36 V, after startup, launch ACEmanager, go to Services > Power Management, and adjust the low voltage standby settings.
4. Connect a Windows® computer to the gateway with an Ethernet cable. If required by your application, connect the RS-232 port and/or the USB port.



1. To operate the gateway, the Ignition Sense must be connected to 7 – 36 VDC.

## STEP 4 – Configure Your AirLink Gateway

AirLink gateways can be configured through the following two options:

### OPTION A – CONNECT REMOTELY THROUGH ALMS

This option is recommended when you want to apply a pre-defined template or to make minor adjustments to the default gateway configuration.

Using a web browser, log into your ALMS account or visit <https://sierrawireless.com/complete/register>

This option requires the gateway to be registered, (see *STEP 1 - Register Your Gateway in ALMS*).

**NOTE:** Changes made through ALMS can take up to 1 day to take effect (timing of refresh configurable – consult the Software configuration guide for more details).

### OPTION B – CONNECT LOCALLY THROUGH ACEMANAGER

This option is recommended when you need to set up a complex configuration/template that requires multiple instances of trial and error and/or instant feedback.

1. On a computer connected to the gateway, enter <https://192.168.13.31:9443> in the web browser. The ACEmanager login screen appears.
2. The administrator user name is entered by default. Enter the default password (printed on the label on the unit's base) and click Login. The Status > Home screen appears.  
**NOTE:** For system security reasons, please change the default password as soon as possible.
3. Check the Network State field. It should read Network Ready, which indicates the gateway is connected to the network. If not, see *STEP 3 - Connect and Turn On the Gateway*. For more information on configuring your gateway for power saving, refer to the ALEOS Software Configuration User Guide.

## SIERRA WIRELESS CONTACT INFORMATION

### Sales information and technical support:

Web: [sierrawireless.com/company/contact-us](http://sierrawireless.com/company/contact-us)  
(including warranty and returns)

Global toll-free number: 1-877-687-7795

### Corporate and product information:

Web: [www.sierrawireless.com](http://www.sierrawireless.com)

International Quick Start Guides available here:

[source.sierrawireless.com/resources/airlink/hardware\\_reference\\_docs/airlink-international-user-guides/](https://source.sierrawireless.com/resources/airlink/hardware_reference_docs/airlink-international-user-guides/)