



# We can help take your home's resilience to the next level.

Hurricanes. Flooding. Hailstorms. There's no shortage of threats waiting to happen. Thanks to state-of-the-art resilient design solutions that feature Hardie® products, multi-story wood framed homes have what it takes to stand up to Florida weather. And Florida homeowners have some much-appreciated peace of mind.

## Look for resilient design features in your next home.

Not all construction methods give you the protection you deserve. Resiliently designed homes can better withstand natural disasters and deliver proven performance in Florida's climate. Plus, repairs to homes with these key features are often simpler and less costly.

### All-Wood Frame Construction

All-wood framing provides a wider range of design options, more efficient construction and better insulation performance.

### Continuous Load Path Reinforcement

Using an integrated system of fasteners and connectors creates a solution engineered to meet or exceed Florida wind codes.

### Ultra-Durable Siding

Low-maintenance Hardie® fiber cement siding manages moisture, does not attract pests and resists cracking better than stucco.

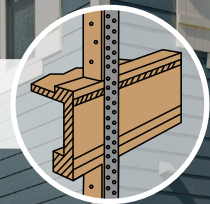
### What is a continuous load path?

Trusted builders throughout Florida use metal connectors to tie homes together from the roof to the foundation.

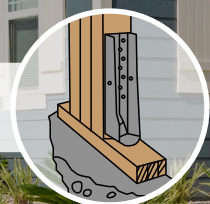
Roof strongly secured to upper story.



Upper story connected to main floor.



Entire home anchored to foundation.





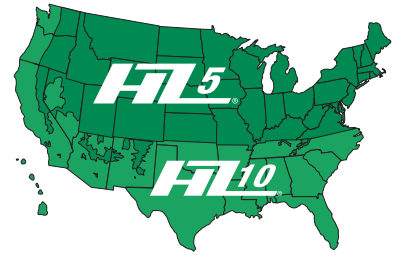
See how Hardie® siding helped Florida homeowners escape the wrath of Hurricane Irma.

Watch Now

## Made in Florida. Made for Florida.

Hardie® products are produced right here in the state at our Plant City manufacturing facility and Hardie® siding is the only brand of siding Engineered for Climate®.

- Approved designs meet Miami-Dade County High Velocity Hurricane Zone (HVHZ) requirements
- Offers FEMA Class 5 flood damage resistance
- **HZ10®** products are engineered to resist damage from heat, humidity and blistering sun

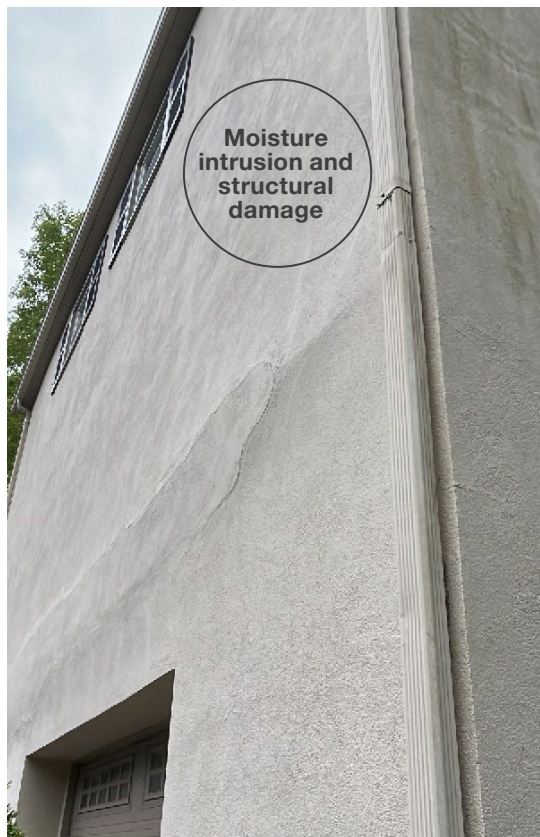


## Risks with stucco.

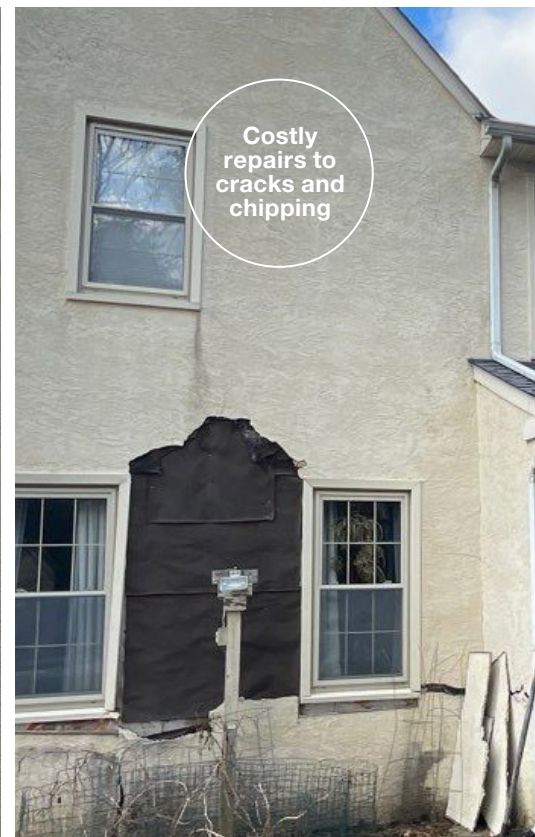
Water intrusion through poorly installed or cracked stucco can lead to mold, rot and structural damage. Even if industry best practices are followed, the stucco's potential to crack cannot be eliminated<sup>1</sup>. Hardie® siding, on the other hand, is a durable option that's more resistant to cracking. This can help reduce maintenance costs over the life of your home.



Mold growth, staining and discoloration



Moisture intrusion and structural damage



Costly repairs to cracks and chipping

# A reputation built on trust.

James Hardie is the company that invented modern fiber cement siding. When it comes to innovation and performance, our products are five generations ahead of other fiber cement siding brands. More importantly, pros know they can trust their reputation with us, and that's why Hardie® products are installed on over 10 million homes across North America.\*

\*Estimate based on total Hardie® siding sales through 2022 and average housing unit size.



## Myths about wood framed construction.

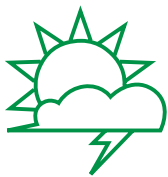
### Myth: Wood can't withstand hurricane winds

**Fact:** "Well designed and well built wood frame homes, built to the latest building code provisions performed very well structurally in the highest hurricane winds to strike the US since hurricane Andrew."<sup>2</sup> - *Florida Division of Emergency Management, Bureau of Mitigation*

### Myth: Wood is at a greater risk to termite and rot damage.

**Fact:** To protect against termite and rot damage, Florida Building Code requires wood framing and structural members to be treated with preservatives or termite protection methods in key locations such as ground or foundation areas, flooring and exposed decks.<sup>3</sup>

## At its best even during Florida's worst.



### Storms

Hardie® siding resists the impact of hail and windblown debris and may be used for approved HVHZ wall designs.



### Termites

Hardie® fiber cement siding is made from a substrate that does not attract termites, woodpeckers and other pests.



### Moisture

Hardie® siding is uniquely formulated to resist the effects of humidity and moisture.

<sup>1</sup> See Plaster Council Stucco Manufacturers Association Crack Policy at [https://www.stuccomfgassoc.com/industry/papers/PlasterCouncil\\_tech4\\_crack.pdf](https://www.stuccomfgassoc.com/industry/papers/PlasterCouncil_tech4_crack.pdf)

<sup>2</sup> See [https://apps.floridadisaster.org/hrg/content/walls/wood\\_frame\\_walls.asp](https://apps.floridadisaster.org/hrg/content/walls/wood_frame_walls.asp)

<sup>3</sup> See 2020 Florida Building Code, 7th Edition Section 2304.12, <https://up.codes/viewer/florida/fl-building-code-2020/chapter/23/wood#23>

# Engineered to protect. Designed to endure.

From the timeless look of Hardie® Plank and Hardie® Shingle to the contemporary designs of Hardie® Panel, you will find a wide range of styles and textures to create a durable, resilient exterior.



## Limited Warranty

Hardie® siding warranties are non-prorated. We stand behind our Hardie® substrate siding 100% for 30 years.



## Want To Learn More?

To explore our uniquely durable products and home design solutions, visit [jameshardie.com](https://www.jameshardie.com)