

Cut Station Setup Guide

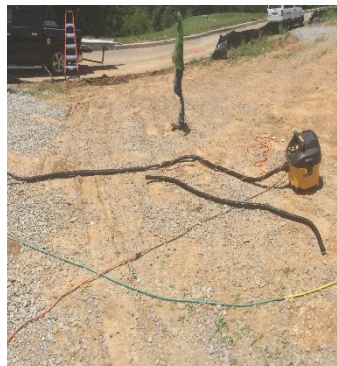
What comes in the box?

BRAND	TOOL	MODEL/ITEM #
Sidewinder	Skilsaw	SPT67FMD-01
Dewalt	Dust Extractor	DWV010
Dewalt	Taper Adapter	DWV9130
Dewalt	Hepa Vacuum Bags	DWV9402 (5 Pack)
Generic	BackPack Swivel Elbow Cuff (101928)	45872
Generic	2 in. Metal Screw Tight	10 Pack
Generic	15 ft. 12 Gauge Extension Cord	N/A
Generic	8 in. Heavy Duty Zip Ties	100 Pack

Step 1: Install Hepa bag into vacuum.



Step 2: Cut 16 ft. hose on Dewalt vacuum in half and reinstall connections (connections are reverse threaded).



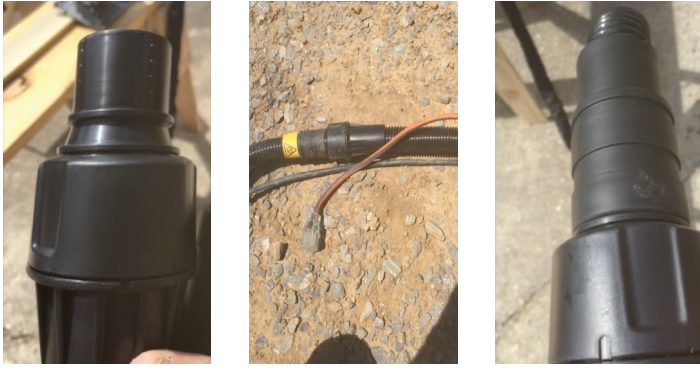
Step 3: Wrap 10 ft. extension cord around Dewalt hose and zip tie using 8 in. zip ties.



Step 4: Connect extension cord to vacuum.



Step 5: Attach Dewalt vacuum hose to saw hose using Dewalt taper adapter.



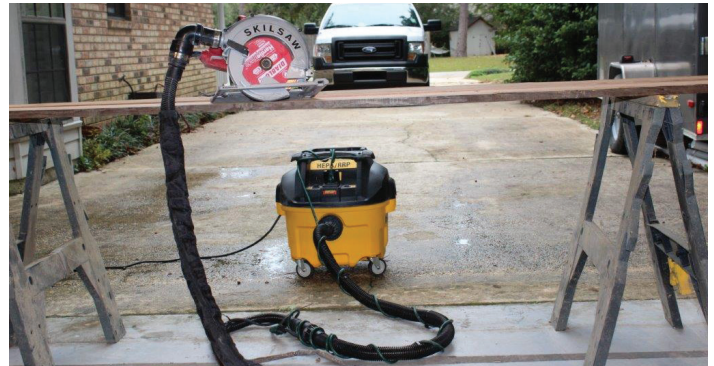
Step 6: Connect power cord from Skilsaw to extension cord and secure by tying two cords together



Step 7: Connect 90 degree swivel elbow to saw and vacuum hose using 2 in. screw down clamps.



Step 8: Place vacuum under the cut table to the back and in the center and run hose out front.



You are all set. Begin cutting safely.